



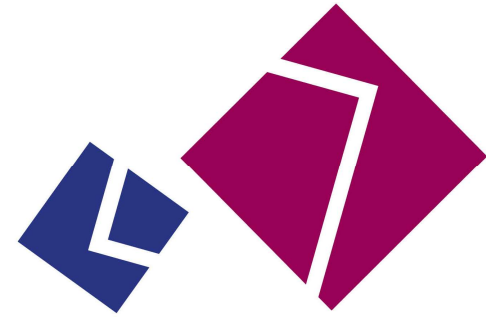
THE LONDON SCHOOL
OF ECONOMICS AND
POLITICAL SCIENCE

Top Tips for New Students





THE LONDON SCHOOL
OF ECONOMICS AND
POLITICAL SCIENCE ■



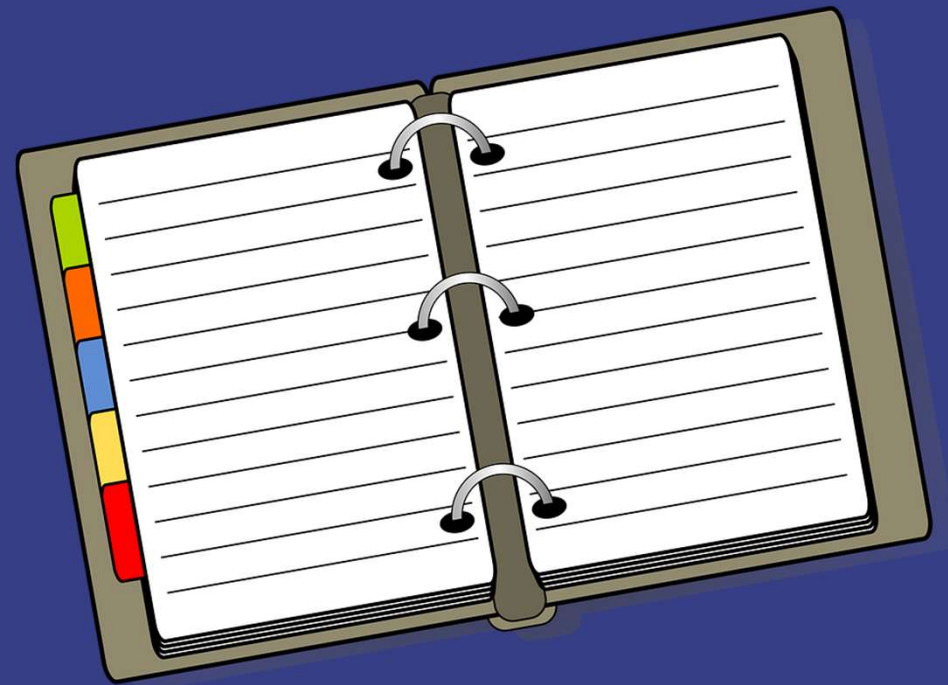
Sue Ryan

Welcome Manager/Senior Administrator
Student Services Events Team



THE LONDON SCHOOL
OF ECONOMICS AND
POLITICAL SCIENCE ■

It's YOUR programme
OWN IT!



LSE

THE LONDON SCHOOL
OF ECONOMICS AND
POLITICAL SCIENCE ■

**Remember
you're part of
the debate**





THE LONDON SCHOOL
OF ECONOMICS AND
POLITICAL SCIENCE ■

Talk to people





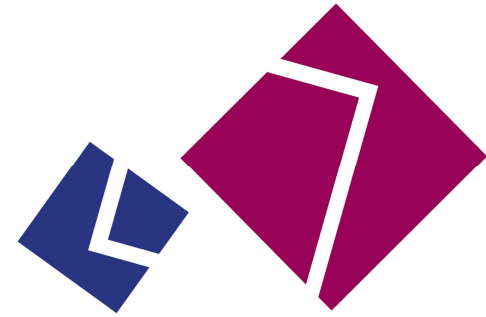
THE LONDON SCHOOL
OF ECONOMICS AND
POLITICAL SCIENCE ■

**Make good notes,
in a way that
works for you**





THE LONDON SCHOOL
OF ECONOMICS AND
POLITICAL SCIENCE ■



Be prepared for new terminology





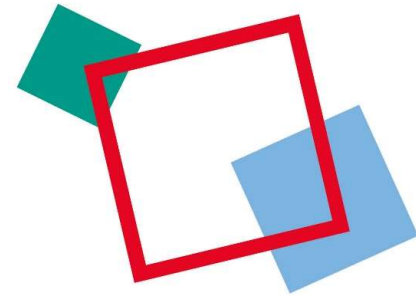
THE LONDON SCHOOL
OF ECONOMICS AND
POLITICAL SCIENCE

LSE loves
acronyms!



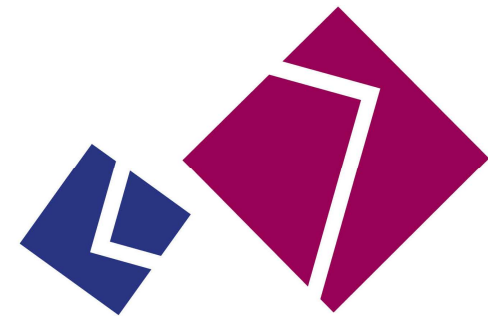
Some examples:

- **UG/PGT/PGR - Undergraduate/Postgraduate/Postgraduate**
- **RUG/PGT/PGR - Undergraduate/Postgraduate Taught/Postgraduate Research**
- **AM – Academic Mentor**
- **SSC – Student Services Centre**
- **SWS – Student Wellbeing Service**
- **FSO – Financial Support Office**
- **DM – Department Manager**
- **HoD – Head of Department**
- **AT/WT/SP - Autumn Term/Winter Term/Spring Term**



Plan your year

- **Autumn**
- **Winter**
- **Spring**





THE LONDON SCHOOL
OF ECONOMICS AND
POLITICAL SCIENCE ■

Make the most of London

[LIFE in London \(lse.ac.uk\)](https://www.lse.ac.uk)





THE LONDON SCHOOL
OF ECONOMICS AND
POLITICAL SCIENCE ■

Top Tips for Students living off campus

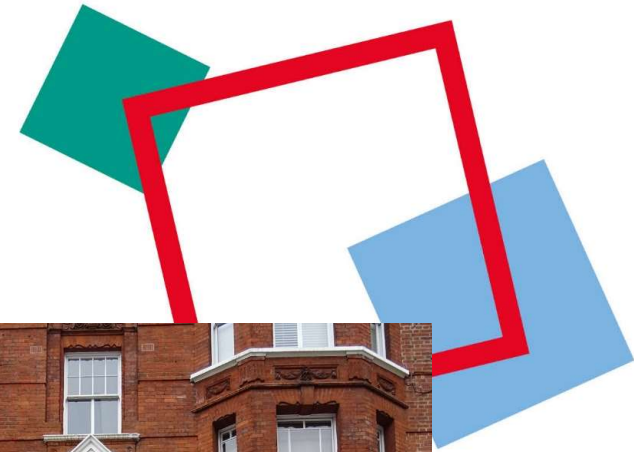




THE LONDON SCHOOL
OF ECONOMICS AND
POLITICAL SCIENCE ■

Finding Accommodation

- **LSE Private Housing Service**
- **LSESU Advice Service**
- **University of London Housing Service**
- **Mayor of London's official website**





THE LONDON SCHOOL
OF ECONOMICS AND
POLITICAL SCIENCE ■

Travelling to/from LSE

- **Planning your journey in advance**
- **Discounted travel cards**
- **Cycling**



THE LONDON SCHOOL
OF ECONOMICS AND
POLITICAL SCIENCE ■

Safety First!



Open a UK student bank account

lse.ac.uk/bankaccounts



Get used to using LSE IT systems and online resources



Slide 17

R0

Insert LSE4Y new info

Ryan,SL, 2024-09-04T09:49:08.626

Read the Guides



Register with a doctor

You have various choices about how to access medical care while at university. If you are an EU resident, please check the healthcare section on lse.ac.uk/ISVA for the most up to date information.

If you are a full-time international student enrolled on a programme lasting six months or more, you may be eligible for NHS treatment once you have paid the immigration health surcharge. Visit www.gov.uk/healthcare-immigration-application for more information.

What medical care is available?

If you are unfamiliar with the NHS, you can do an online search for 'NHS services explained'. This will provide you with an overview of common services (e.g. pharmacies, hospitals, eye care and dental surgeries) and how to access them.

You are usually required to register with a local General Practitioner's (GP) surgery before you can book an appointment. You should register as soon as possible and not wait until you're unwell!

Visit lse.ac.uk/studentHealth for more details.

How do I register with a GP?

- 1. Find your local surgery**
The NHS typically requires you to select a local GP within your postcode catchment area. Some GP practices will register patients who live outside of their traditional catchment areas for greater convenience. To choose a GP and find their contact details, visit www.nhs.uk
- 2. Ask if your preferred GP is accepting new patients**
You can find out the procedure for registering at the surgery.
- 3. Prepare any required documentation**
You may need:
 - Proof of your identity (e.g. your passport or driving licence)
 - Your visa, if applicable
 - Evidence that you are a student (see 'Required student status documentation')
 - Proof of your UK address.

Top Tip!
GPs can charge different fees for additional services like writing medical letters, which you might need later. Ask them about their prices before you register!

Nearest GP to campus
St Philips Medical Centre, Second Floor, Pathick Lawrence House
www.stphilipsmedicalcentre.co.uk

53

Shape the world with LSE's Public Events

Shaping the world through global debate

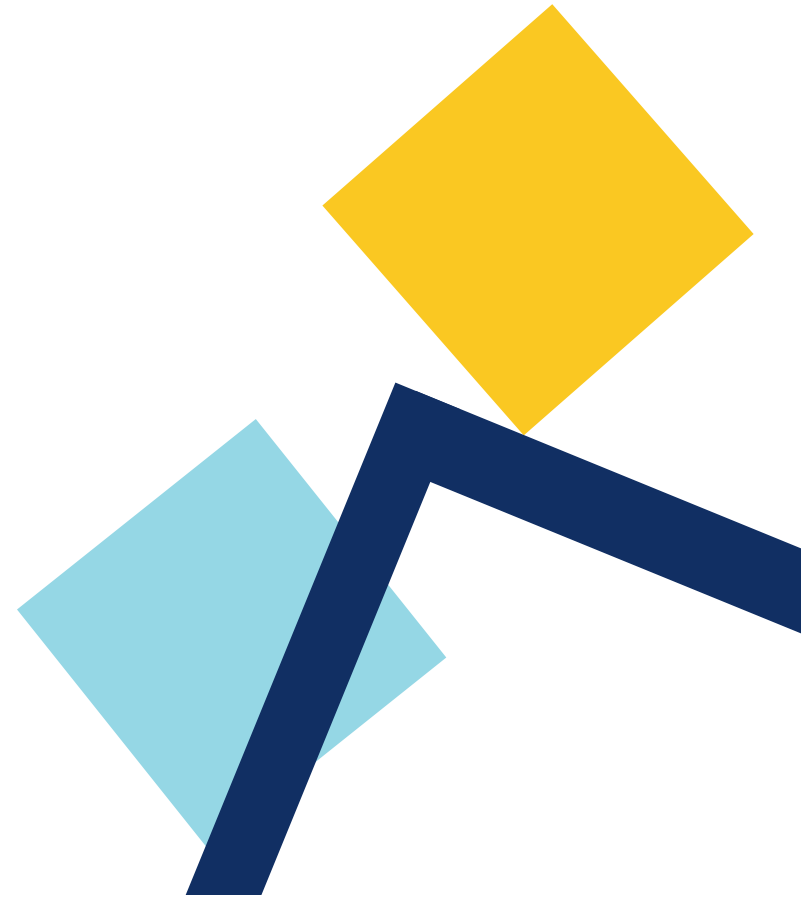
LSE's renowned public lecture programme features over 700 events each year, where some of the most influential figures in the social sciences can be heard. Upcoming events are all featured on the LSE events website. These events are a fantastic opportunity for you to engage with academics, political leaders, authors, leading figures from business and commerce, journalists, and civil society activists. Do check out our schedule of events and join the debate!

To receive updates about events you can sign up to the newsletter or follow us on Twitter and Facebook. You can also catch up on any missed events by listening to the podcasts.



THE LONDON SCHOOL
OF ECONOMICS AND
POLITICAL SCIENCE ■

Learn to navigate campus





THE LONDON SCHOOL
OF ECONOMICS AND
POLITICAL SCIENCE ■

Look after your LSE Card

lse.ac.uk/lsecard



LSE

THE LONDON SCHOOL
OF ECONOMICS AND
POLITICAL SCIENCE ■

Plan your time during Welcome

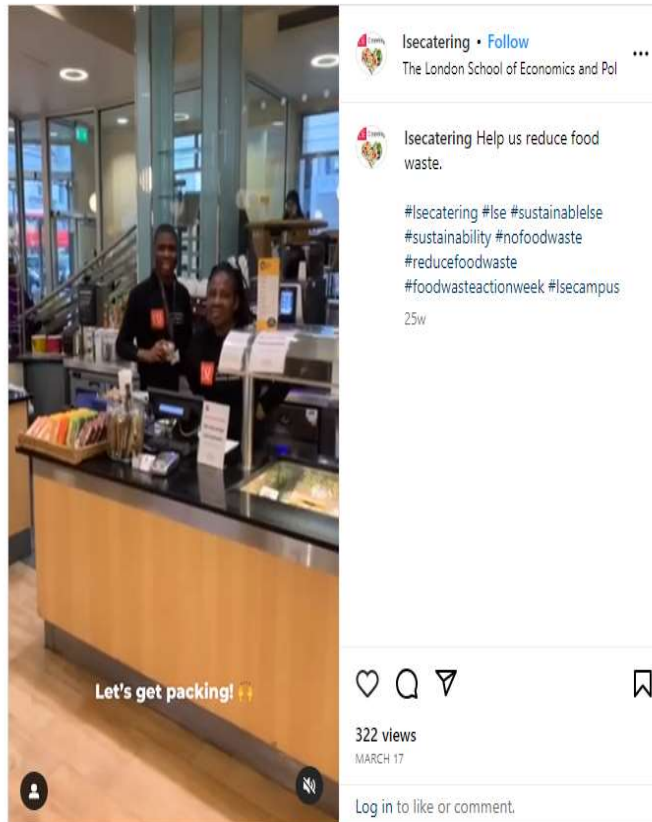
welcome.lse.ac.uk
#LSEWelcome





Instagram

Log In Sign Up



• Too Good To Go

• Participating LSE outlets:

1. Café 54 (CKK)
2. Plaza Café (outside Library)
3. Beveridge Café (inside CBG)
4. Shaw Café (CKK)
5. The Garrick

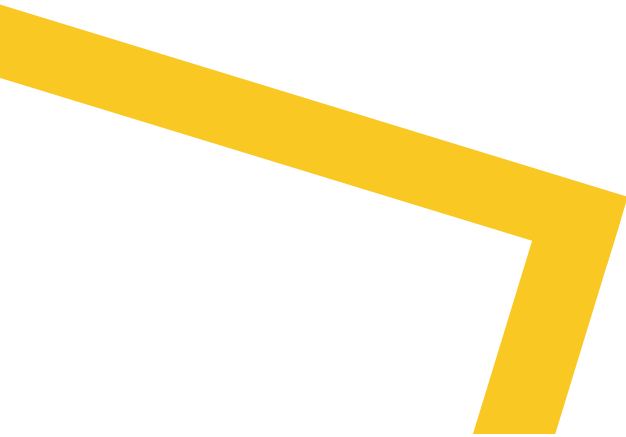
• #toogoodtogo



THE LONDON SCHOOL
OF ECONOMICS AND
POLITICAL SCIENCE ■

Ask a current student ...

Madison Bryan
BSc Politics and Economics





THE LONDON SCHOOL
OF ECONOMICS AND
POLITICAL SCIENCE

Thank you for
attending this
Top Tips Talk.

We hope you
found it useful

