



GLOBAL CHALLENGE PROGRESS REPORT

London School of Economics

London School of Economics
(includes steps entered up to 31 July)

OVERALL PERFORMANCE

| | |
|----------------------|-------------|
| Total Employees | 343 |
| Walk Steps | 304,768,685 |
| Bike Steps | 18,282,669 |
| Swim Steps | 5,025,737 |
| Total Combined Steps | 335,960,690 |
| Total Distance | 215,015 km |
| Total Points | 690,542 |

This equates to walking around the world 5.37 times.

DAILY STEP AVERAGES

| | |
|------------------------------|---------------------|
| Daily Step Average | 15,786 |
| Average Distance Per Day | 10.10 km |
| Average Energy Burnt Per Day | 633 calories |
| Total Energy Burnt | 13,480,796 calories |

In total, your employees have burnt off the following:



28,221
Large burgers



83,493
Glasses of red wine



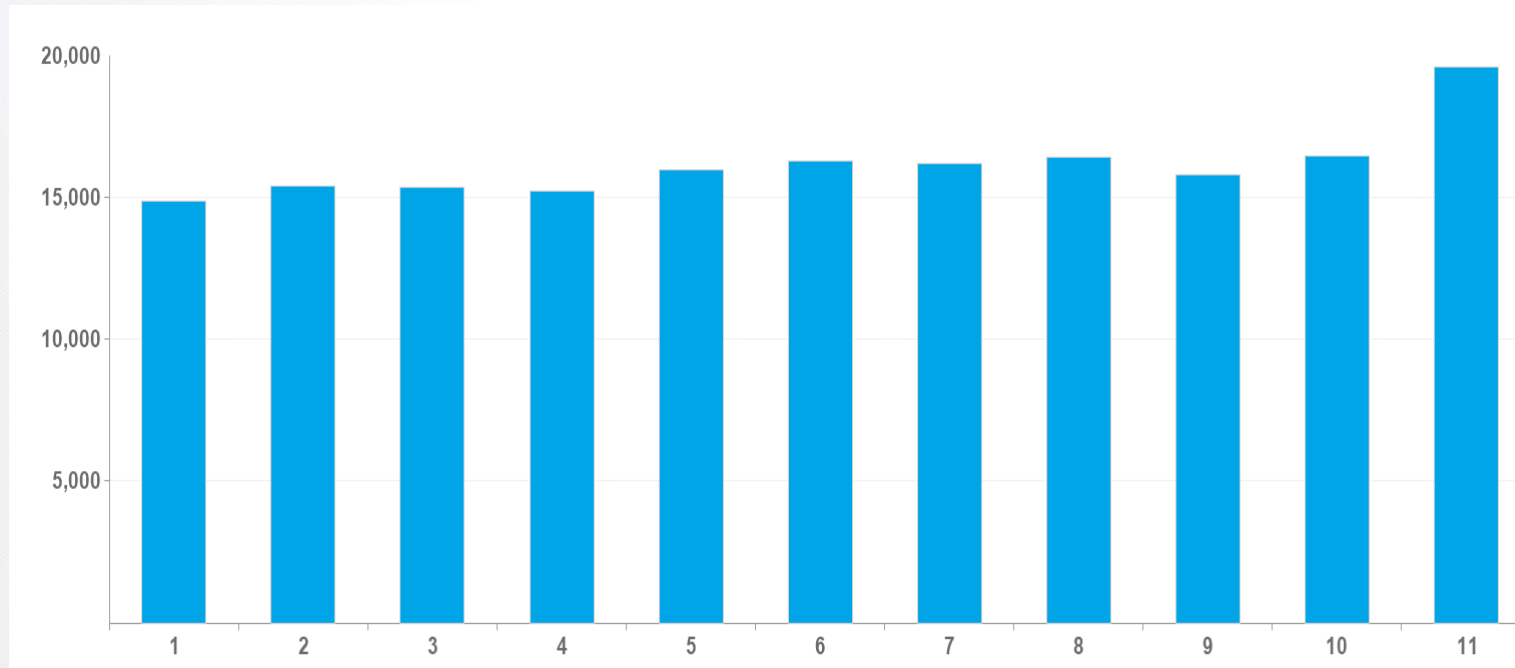
54,011
Slices of cake

CURRENT ACTIVITY LEVELS

| Step Range | Activity Level | % of Participants |
|-----------------|-------------------|-------------------|
| Under 5,000 | Inactive | 2.3% |
| 5,000 - 7,499 | Somewhat Active | 0.6% |
| 7,500 - 9,999 | Moderately Active | 10.2% |
| 10,000 - 12,499 | Active | 20.4% |
| 12,500+ | Highly Active | 66.5% |

STEP AVERAGES BY WEEK

Overall Daily Step Average: 15,786 steps per person per day



The chart shows how your average step count has changed over the course of the event.

MOST ACTIVE AREAS

| Rank | Top Areas | Step Average |
|------|-------------------------|--------------|
| 1 | HELLENIC OBSERVATORY | 25,903 |
| 2 | LIBRARY SERVICES | 21,512 |
| 3 | GOVERNMENT | 20,618 |
| 4 | LSE 100 | 20,508 |
| 5 | INTERNATIONAL GROWTH | 18,378 |
| 6 | DIRECTORATE AND SUPPORT | 18,101 |
| 7 | LSE CITIES | 17,764 |
| 8 | METHODOLOGY | 17,339 |
| 9 | RESEARCH AND INNOVATION | 17,189 |
| 10 | LSE COMMUNICATIONS | 17,115 |

MOST ACTIVE TEAMS

| Rank | Top Teams | Area Name | Distance Travelled (km) |
|------|-------------------------------|-------------------------|-------------------------|
| 1 | Olympians of LSE | HELLENIC OBSERVATORY | 8,123 |
| 2 | The Dream Crushers | LIBRARY SERVICES | 7,954 |
| 3 | LSE Library LIFERs | LIBRARY SERVICES | 6,661 |
| 4 | The Gov'ners | GOVERNMENT | 6,466 |
| 5 | N-Squared and the Jay-Walkers | LSE 100 | 6,405 |
| 6 | Comms And Have a Go... | LSE COMMUNICATIONS | 5,629 |
| 7 | Catch us if you can | Human Resources | 5,625 |
| 8 | Babycham Wanderers | LIBRARY SERVICES | 5,542 |
| 9 | Neither Fast Nor Furious | INTERNATIONAL GROWTH | 5,540 |
| 10 | A Running Joke | RESEARCH AND INNOVATION | 5,395 |

Distance travelled is cumulative since the beginning of the event.

MOST IMPROVED TEAMS

| Rank | Most Improved Teams | Area Name | % Improved |
|------|-------------------------------|-----------------------------|------------|
| 1 | The Gov'ners | GOVERNMENT | 7.71 % |
| 2 | Olympians of LSE | HELLENIC OBSERVATORY | 0.70 % |
| 3 | A Running Joke | RESEARCH AND INNOVATION | -3.65 % |
| 4 | The Dream Crushers | LIBRARY SERVICES | -4.06 % |
| 5 | Nerds of a Feather | DATA TECHNOLOGY SERVICES | -6.23 % |
| 6 | Babycham Wanderers | LIBRARY SERVICES | -6.86 % |
| 7 | Team Walkies | ESTATES DIVISION | -7.10 % |
| 8 | N-Squared and the Jay-Walkers | LSE 100 | -9.18 % |
| 9 | Hot on the Hills | RESEARCH AND INNOVATION | -9.52 % |
| 10 | Sustainable Steppers! | GRANTHAM RESEARCH INSTITUTE | -14.24 % |

The most improved is based on week 10 performance versus a team's average performance for the event to date

BEST PERFORMING TEAMS

| Rank | Best Performing Teams | Area Name | Points |
|------|-------------------------------|-------------------------|--------|
| 1 | LSE Library LIFERs | LIBRARY SERVICES | 27,950 |
| 2 | Catch us if you can | Human Resources | 22,942 |
| 3 | The Dream Crushers | LIBRARY SERVICES | 22,769 |
| 4 | Olympians of LSE | HELLENIC OBSERVATORY | 21,393 |
| 5 | Babycham Wanderers | LIBRARY SERVICES | 21,043 |
| 6 | The Gov'ners | GOVERNMENT | 20,719 |
| 7 | N-Squared and the Jay-Walkers | LSE 100 | 19,497 |
| 8 | Sole Striders | Human Resources | 18,536 |
| 9 | Hot on the Hills | RESEARCH AND INNOVATION | 18,214 |
| 10 | The Unwanted | FINANCE DIVISION | 17,892 |