

SITS: Quick Analysis Tool

Contents

The Quick Analysis tool allows for a quick breakdown of numbers (and percentages) of a particular field following the retrieval of students on SITS. This can then be exported to a CSV file or as HTML as required.

It can also be used as a cross-reference tool to allow for comparison between 2 fields if required.

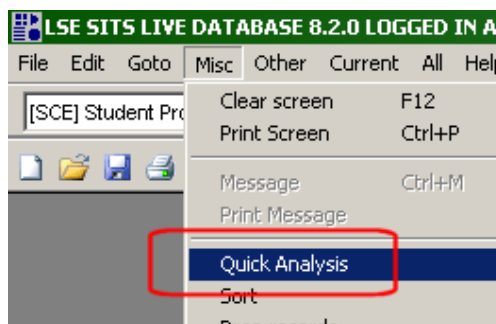
1. Simple Mathematical Analysis

Quick Analysis can be run from most screens following the retrieval of students. For this example we are using the SCE screen.

- 1.1. Following retrieving a number of students in **SCE**, to get a breakdown of the number of students which each Fee Status, highlight the **Fee Status** field and go to:

Misc > Quick Analysis

Fee level	<input type="text"/>
HESA fee band	<input type="text"/>
SSF code	<input type="text"/>
Funding level	<input type="text"/>
Special Fee Ind.	<input type="text"/>
Student fund cat.	<input type="text"/>
Fee status	HUK
Fee profile	<input type="text"/>
RFT code	TM
Fundability	<input type="checkbox"/>
Year type	<input type="text"/>



1.2. Make sure the **Mathematical Analysis** radio button is selected and click **Ok**.

Advanced Quick Analysis - Selection screen

Analysis of field FST_CODE.FST - Fee Status (FST) code.

Mathematical analysis (Min,Max,Average)

Cross reference analysis

Field: Fee Status (FST) code

Discard retrieved records after processing

Group values case sensitively

Maximum processing time in minutes:

1.3. This will generate a simple breakdown of the numbers along with their percentages. Further information is available down the left hand side (additionally if you are looking at a field with a numerical value this will also populate the fields such as Median, Average etc).

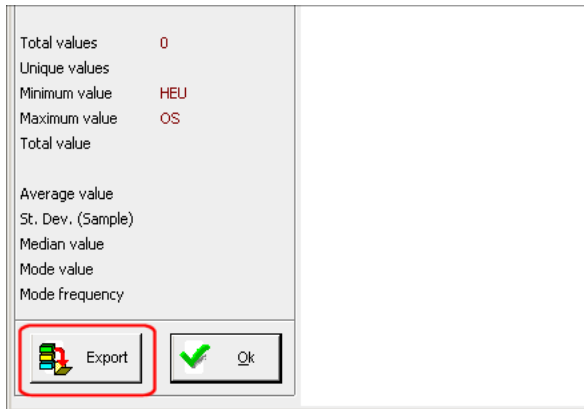
Quick Analysis Results (MEN_YQA2A)

Results for field: FST_CODE.FST
Fee Status (FST) code

Value	Count	Perc
HEU	59	8.10%
HUK	281	38.60%
OS	388	53.30%

Total records: 728
Unique records: 3
Total values: 0
Unique values:
Minimum value: HEU
Maximum value: OS
Total value:
Average value:
St. Dev. (Sample):
Median value:
Mode value:
Mode frequency:

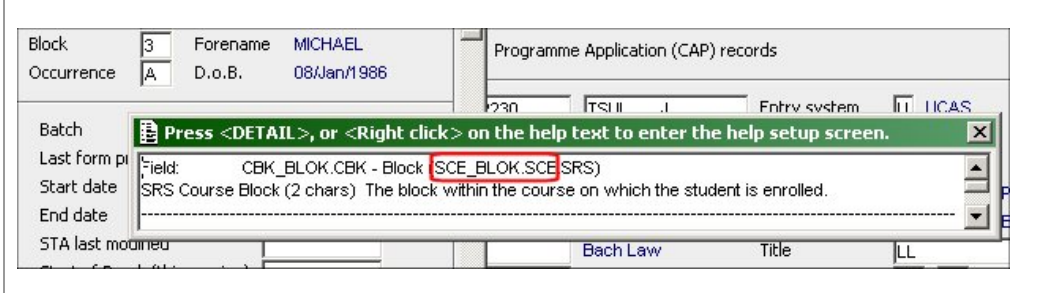
1.4. To view this in a spreadsheet click on the **Export** button



2. Cross Reference Analysis

This allows a comparison between two different fields. In this case between the Fee Status and the Block.

2.1. Highlight the **Block** field and click **F1**. This will bring up a help window which contains the field name within the database. Highlight and copy the text in brackets indicated below with the red ring around it - this selects the field name "SCE_BLOK" and the entity "SCE". If there is no field name in brackets select the field name to the left instead.



2.2. Select the **Fee status** field and go to:

Misc > Quick Analysis

Click on the **Cross reference analysis** radio button.

Advanced Quick Analysis - Selection screen
Analysis of field FST_CODE.FST - Fee Status (FST) code.

Mathematical analysis (Min,Max,Average)
 Cross reference analysis

Field 1: FST_CODE.FST Fee Status (FST) code
Field 2: [Empty]

Discard retrieved records after processing
 Group values case sensitively

Maximum processing time in minutes: 2

Cancel Ok

2.3. Paste the field name for the **Block** field into **Field 2** and click **Ok**.

Advanced Quick Analysis - Selection screen
Analysis of field FST_CODE.FST - Fee Status (FST) code.

Mathematical analysis (Min,Max,Average)
 Cross reference analysis

Field 1: FST_CODE.FST Fee Status (FST) code
Field 2: SCE_BLOK.SCE

Discard retrieved records after processing
 Group values case sensitively

Maximum processing time in minutes: 2

Cancel Ok

2.4. This will generate a simple table comparing the two elements, to view this data in Excel click on the **Export** button in the top right hand corner.

Quick Analysis - Results
Analysis of field FST_CODE.FST (Fee Status (FST) code) vs. SCE_BLOK.SCE ()

Presentation
Row = FST_CODE.FST - Fee Status (FST) code
 SCE_BLOK.SCE
Font: Courier,8
Format: Text Show Zero values? Show Percentage?
 Html
 Chart

Display Mode
 Number of records
 Percentage of Row total
 Percentage of Column total
 Percentage of Grand total

Row sort ...
 Code Ascending
 Total Descending

Column sort ...
 Code Ascending
 Total Descending

Column Width: 6

FST_CODE.FST	1	2	3	TOTAL	%AGE
HEU	10	22	27	59	8.1%
HUK	111	94	76	281	38.4%
IOS	132	122	137	391	53.5%
TOTAL	253	238	240	731	
PERCENTAGE	34.6%	32.6%	32.8%		

2.5. Select the folder you want to save the file to and click **Ok**.

Export Quick Analysis (MEN_YQA3)

Export Quick Analysis

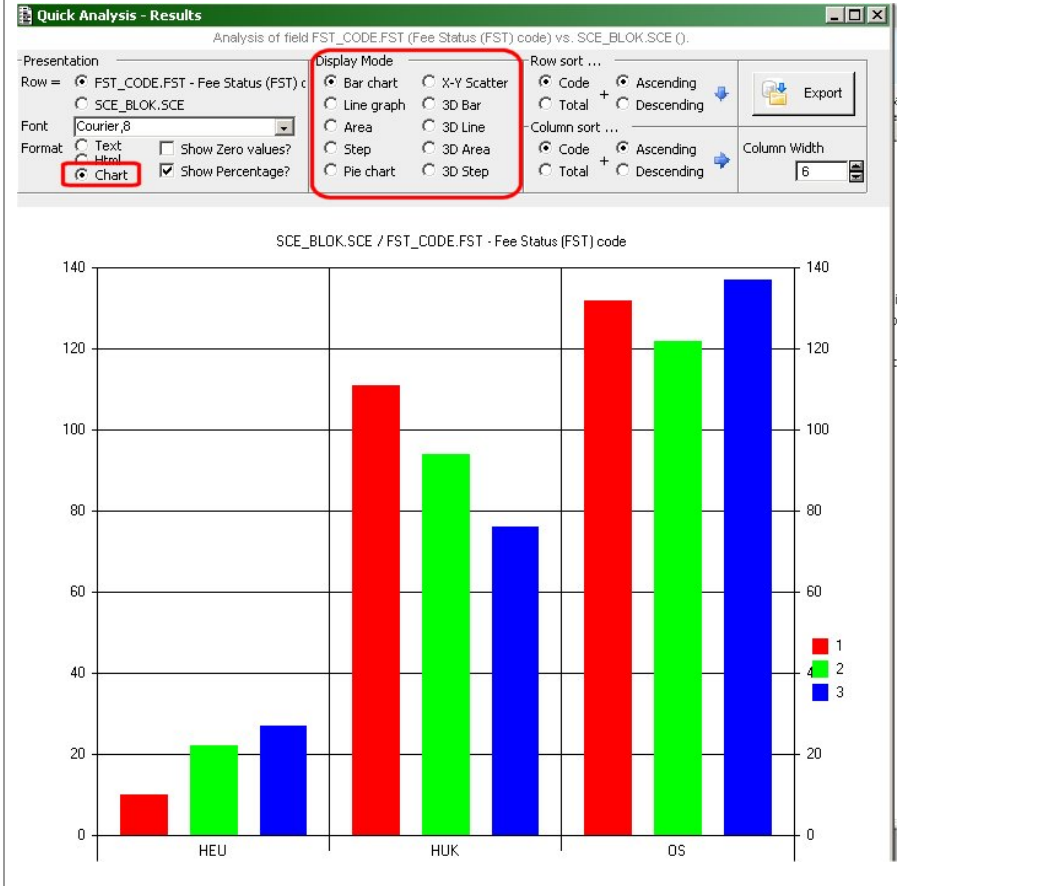
Exchange Format: CSV2 Comma & Quote separated

Filename: c:\siapp\qa_fst_code.fst_vs_sce_blok.sce.csv Clipboard

Unicode Format: Default

Buttons: Cancel, Ok

2.6. Alternatively select the **Chart** radio button to display the comparison in a graphical way. By using the **Display Mode** options you can view the graph in various different formats. However these cannot be exported in any way, other than by taking a screenshot.



Revision History – this document was amended on:

Revised by	Summary of Changes	Revision Date	New Version
Tom Richey	Created document	01/10/10	1.0