

Master's Course Results: 2014-15 to 2016-17

Mark Devlin, Academic Registrar's Division

30 November, 2017

Media & Communications (MC) Courses

Taught Master's marks and grades

This is a summary of mark and grade outcomes for taught postgraduate Master's level Media & Communications (MC) courses taken by Master's students over the last 3 years, 2014-15 to 2016-17.

Results on courses for students on Diploma programmes or taking taught postgraduate level courses, and Intercollegiate and Exchange students are *not* included.

Absence and Incomplete grades, along with the zero marks, *are* included among the results. Grades are based on the Taught Master's schemes.

Plots and Tables

Histograms summarise the Agreed marks from the *most recent* year for which results exist, illustrating the distribution, with a bin-width of 3.33 marks to indicating marks in the upper, mid and lower range. They are coloured by grade;

Barcharts present the outcomes in grades. One filled to show the proportion of results in each grade, the other of counts in each grade.

Box-plots simplify the distribution into quartiles, boxes mark the inter-quartile range, divided by the median. Notches around the median indicate the margin of error around the measure, increasing as the number of results fall. Outer quartiles are covered by lines up to 1.5 times the inter-quartile range, beyond which individual marks are plotted as outliers.

ecdf (empirical cumulative distribution function) plots indicate the proportion of results up to a given mark, or mark for a given percentile for 3 years;

The two tables that follow set out summaries of the marks and grades for all results on taught postgraduate level courses in each year.

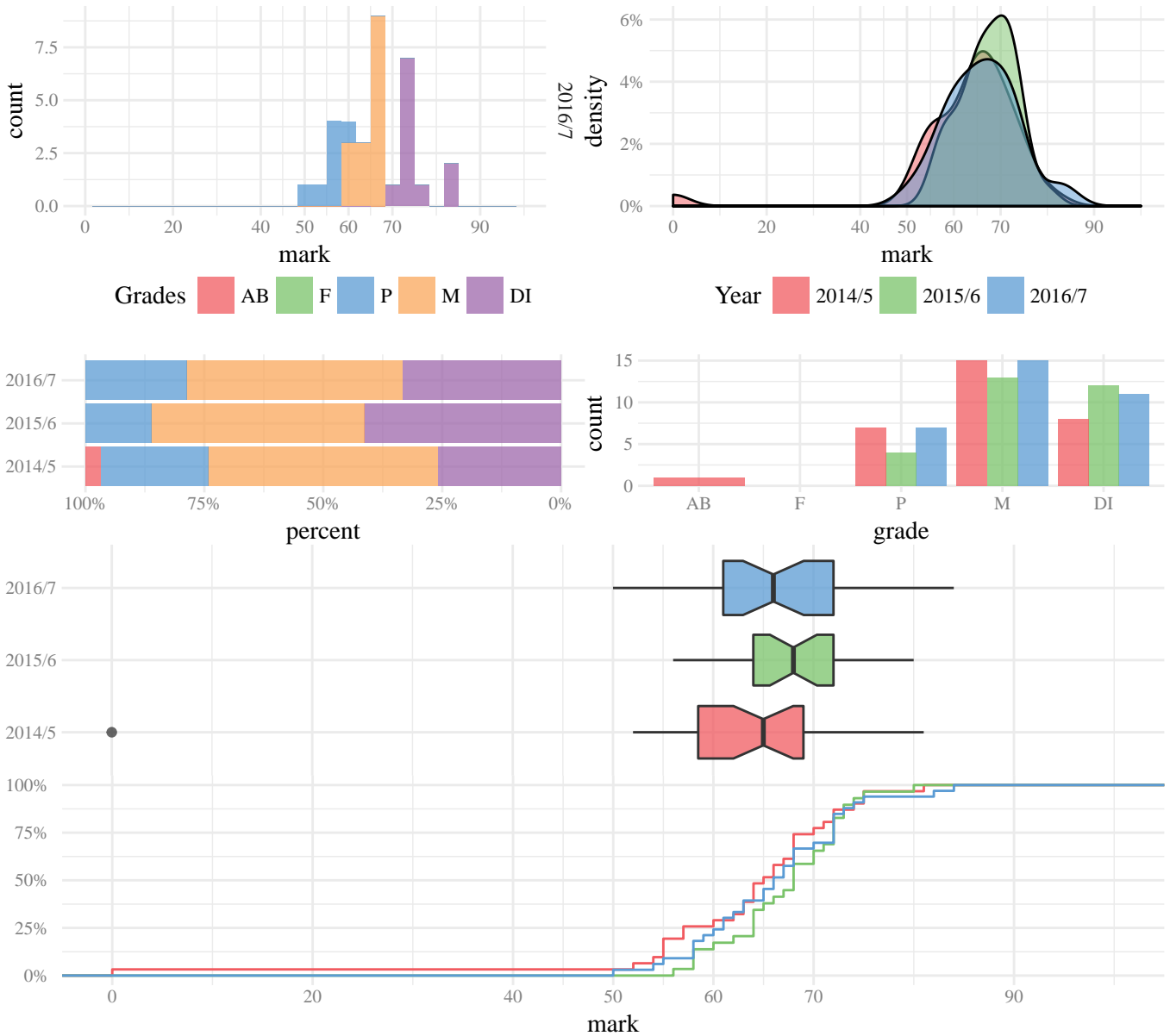
Comments

Any comments or questions are welcome.

Mark Devlin
ARD Systems,
Academic Registrar's Division.

m.p.devlin@lse.ac.uk

MC401: Mediated Resistance and Citizens



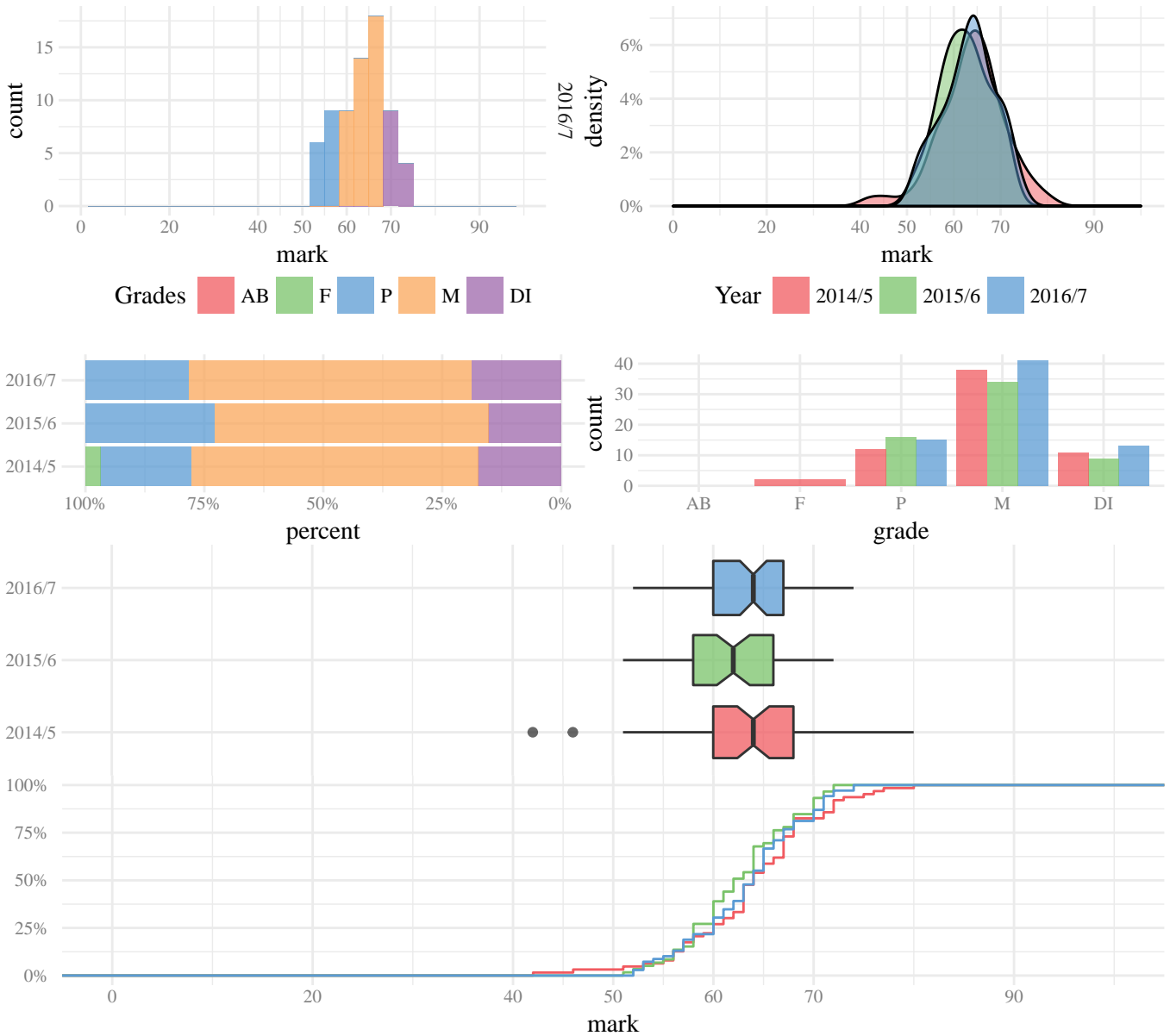
Year	n	mean	sd	min	q10	q25	median	q75	q90	q95	max
2014/5	31	62.90	13.66	0.00	55	58	65	69	74	75	81.00
2015/6	29	67.30	5.88	56.00	58	64	68	72	73	74	80.00
2016/7	33	66.10	7.64	50.00	58	61	66	72	73	77	84.00

Table 1: Mark summary

Year	n	AB	F	P	M	DI	%:	AB	F	P	M	DI
2014/5	31	1	0	7	15	8		3.2	0.0	22.6	48.4	25.8
2015/6	29	0	0	4	13	12		0.0	0.0	13.8	44.8	41.4
2016/7	33	0	0	7	15	11		0.0	0.0	21.2	45.5	33.3

Table 2: Grade summary (count and percentage)

MC402: The Audience in Media and Communications



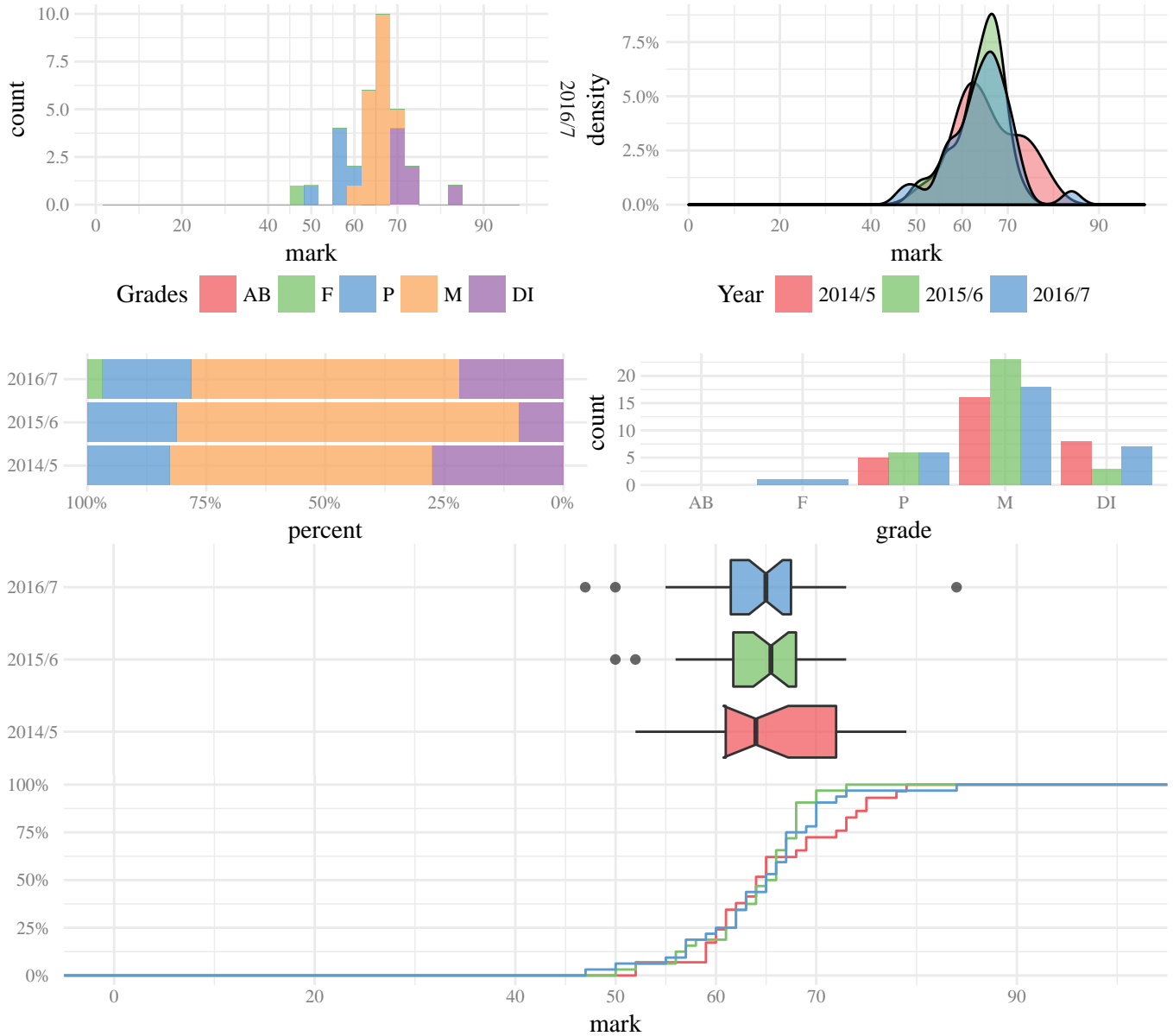
Year	n	mean	sd	min	q10	q25	median	q75	q90	q95	max
2014/5	63	63.90	6.95	42.00	56	60	64	68	72	74	80.00
2015/6	59	62.50	5.31	51.00	56	58	62	66	70	71	72.00
2016/7	69	63.40	5.64	52.00	55	60	64	67	71	71	74.00

Table 3: Mark summary

Year	n	AB	F	P	M	DI	%:	AB	F	P	M	DI
2014/5	63	0	2	12	38	11		0.0	3.2	19.0	60.3	17.5
2015/6	59	0	0	16	34	9		0.0	0.0	27.1	57.6	15.3
2016/7	69	0	0	15	41	13		0.0	0.0	21.7	59.4	18.8

Table 4: Grade summary (count and percentage)

MC403: Contemporary Issues in Media and Communications Policy



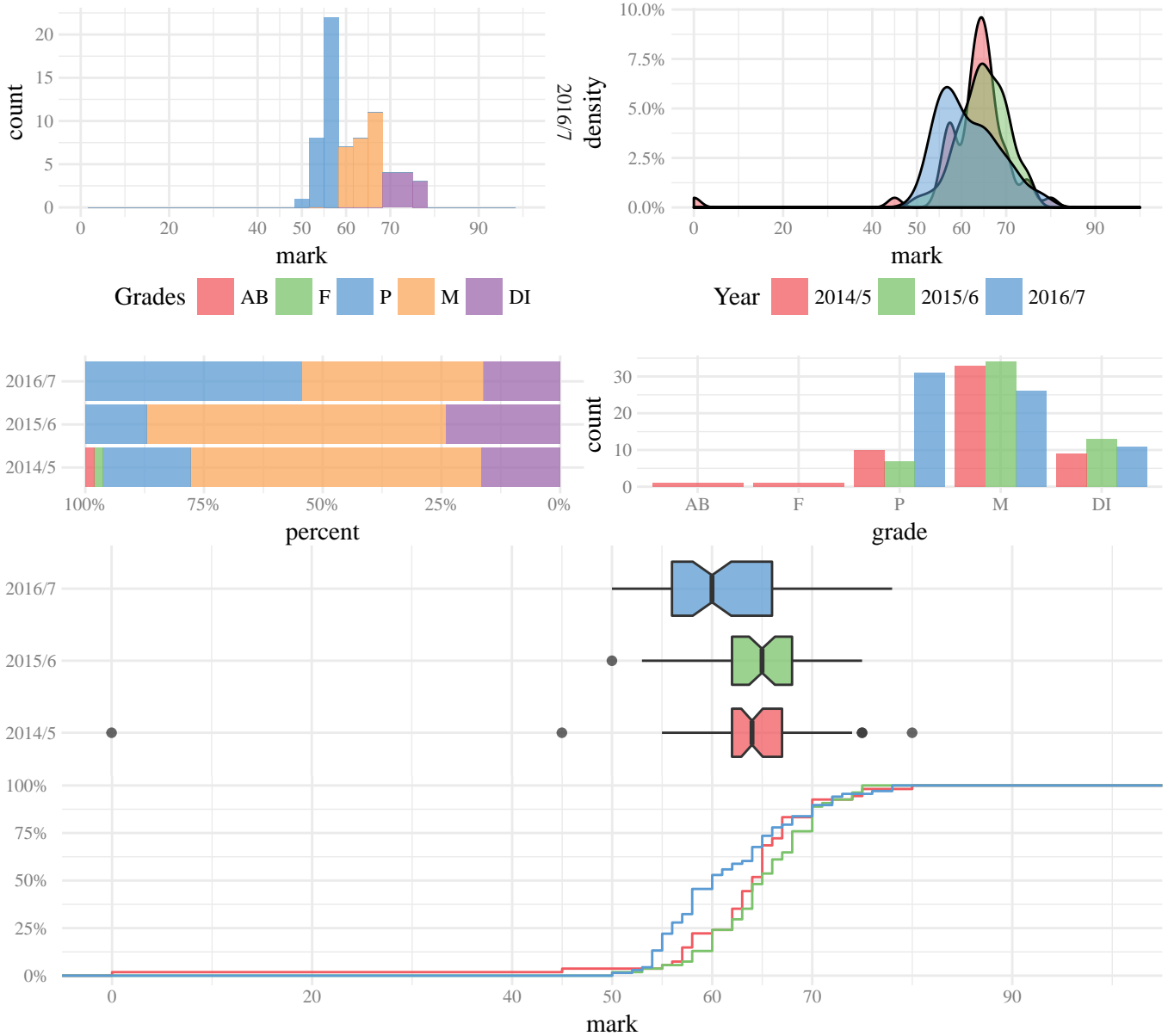
Year	n	mean	sd	min	q10	q25	median	q75	q90	q95	max
2014/5	29	65.60	7.11	52.00	59	61	64	72	75	76	79.00
2015/6	32	63.80	5.30	50.00	56	61	65	68	68	70	73.00
2016/7	32	64.30	7.04	47.00	57	61	65	67	70	72	84.00

Table 5: Mark summary

Year	n	AB	F	P	M	DI	%:	AB	F	P	M	DI
2014/5	29	0	0	5	16	8		0.0	0.0	17.2	55.2	27.6
2015/6	32	0	0	6	23	3		0.0	0.0	18.8	71.9	9.4
2016/7	32	0	1	6	18	7		0.0	3.1	18.8	56.2	21.9

Table 6: Grade summary (count and percentage)

MC404: Political Communication



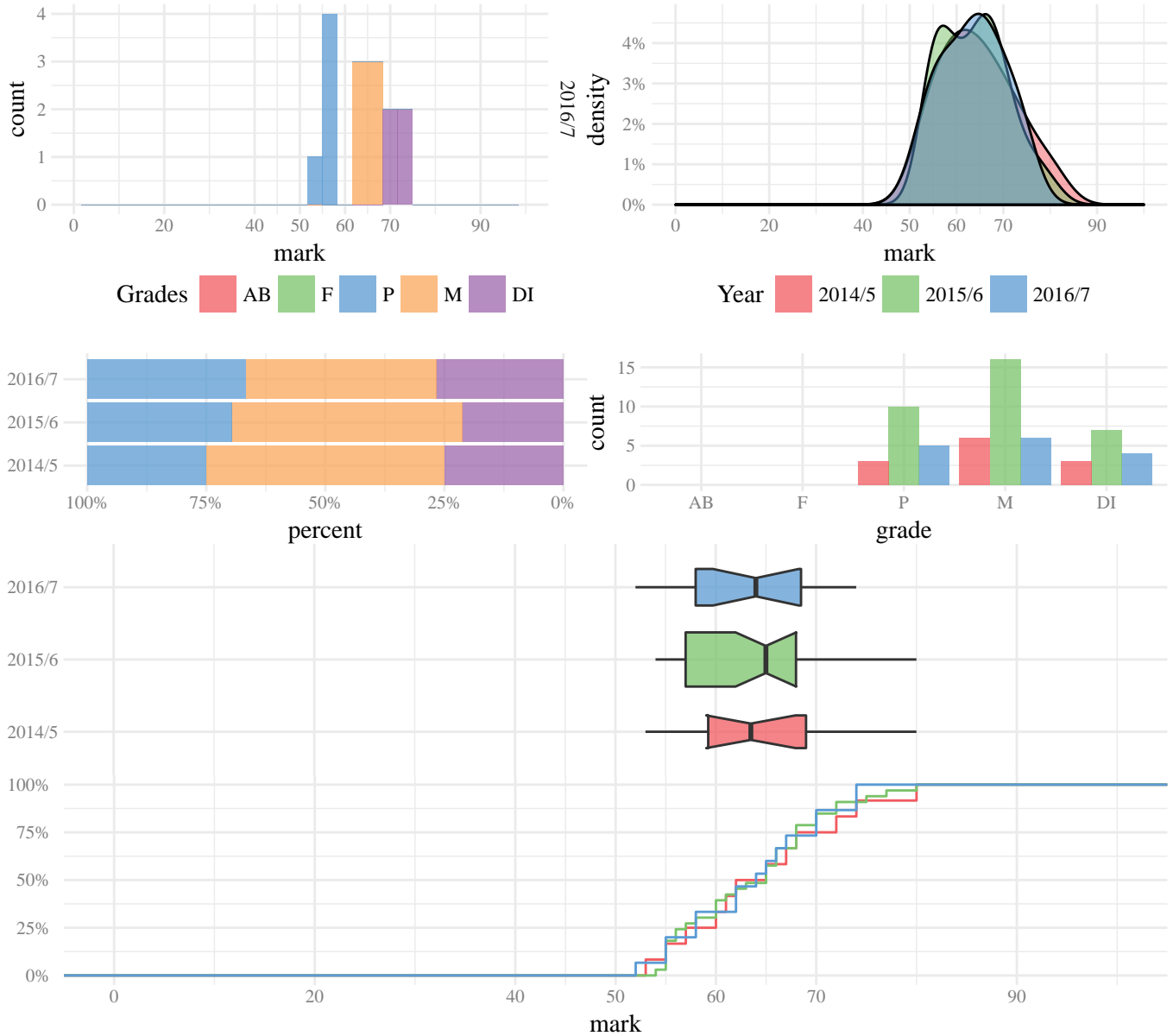
Year	n	mean	sd	min	q10	q25	median	q75	q90	q95	max
2014/5	54	62.80	10.43	0.00	57	62	64	67	70	74	80.00
2015/6	54	64.90	5.43	50.00	58	62	65	68	70	74	75.00
2016/7	68	61.50	6.69	50.00	54	56	60	66	70	72	78.00

Table 7: Mark summary

Year	n	AB	F	P	M	DI	%:	AB	F	P	M	DI
2014/5	54	1	1	10	33	9		1.9	1.9	18.5	61.1	16.7
2015/6	54	0	0	7	34	13		0.0	0.0	13.0	63.0	24.1
2016/7	68	0	0	31	26	11		0.0	0.0	45.6	38.2	16.2

Table 8: Grade summary (count and percentage)

MC405: Policy and Practice in ICTs and Development



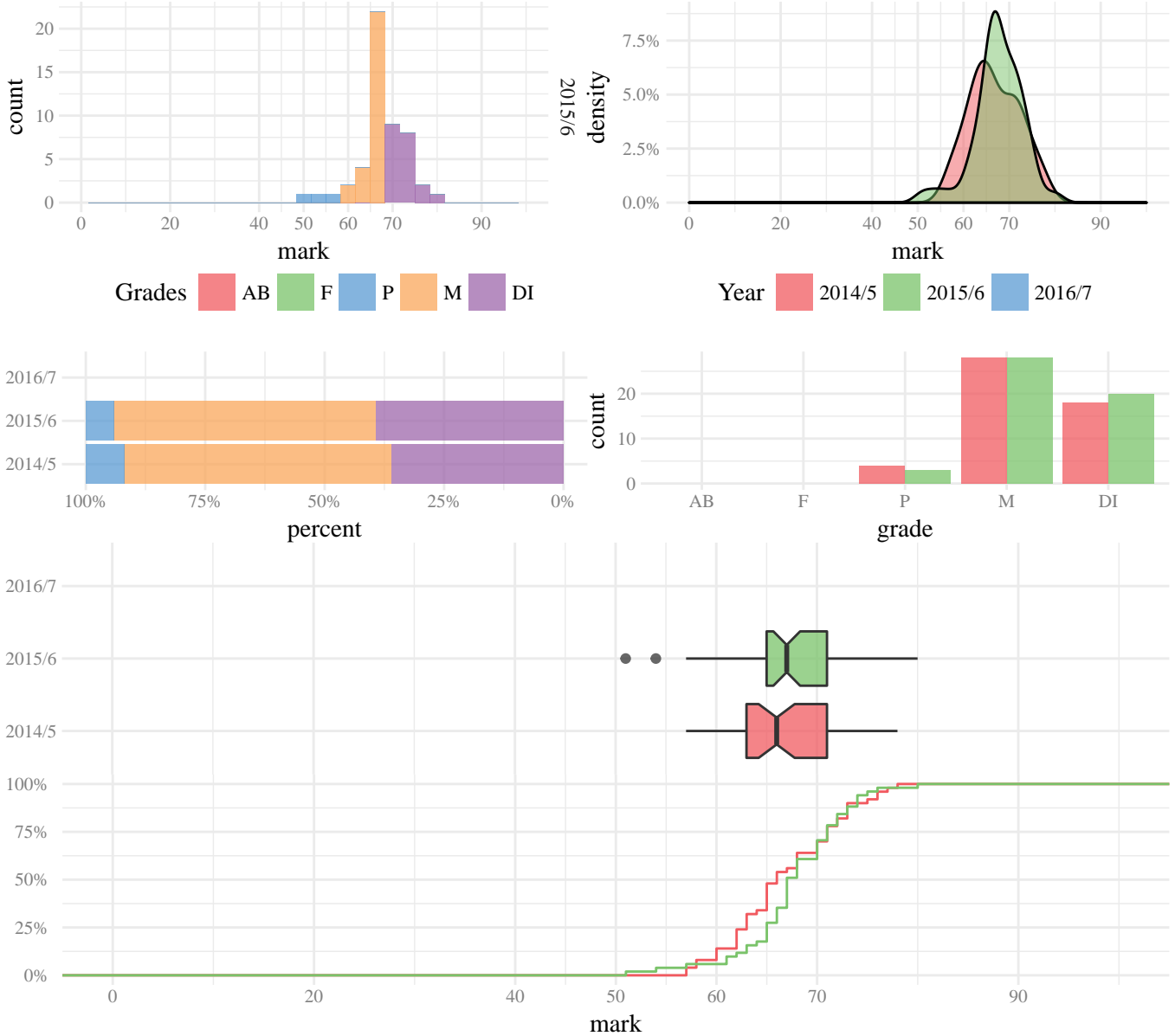
Year	n	mean	sd	min	q10	q25	median	q75	q90	q95	max
2014/5	12	64.50	8.11	53.00	55	59	63	69	73	76	80.00
2015/6	33	63.70	7.08	54.00	55	57	65	68	72	75	80.00
2016/7	15	63.50	6.91	52.00	55	58	64	68	72	74	74.00

Table 9: Mark summary

Year	n	AB	F	P	M	DI	%:	AB	F	P	M	DI
2014/5	12	0	0	3	6	3		0.0	0.0	25.0	50.0	25.0
2015/6	33	0	0	10	16	7		0.0	0.0	30.3	48.5	21.2
2016/7	15	0	0	5	6	4		0.0	0.0	33.3	40.0	26.7

Table 10: Grade summary (count and percentage)

MC407: International Media and The Global South



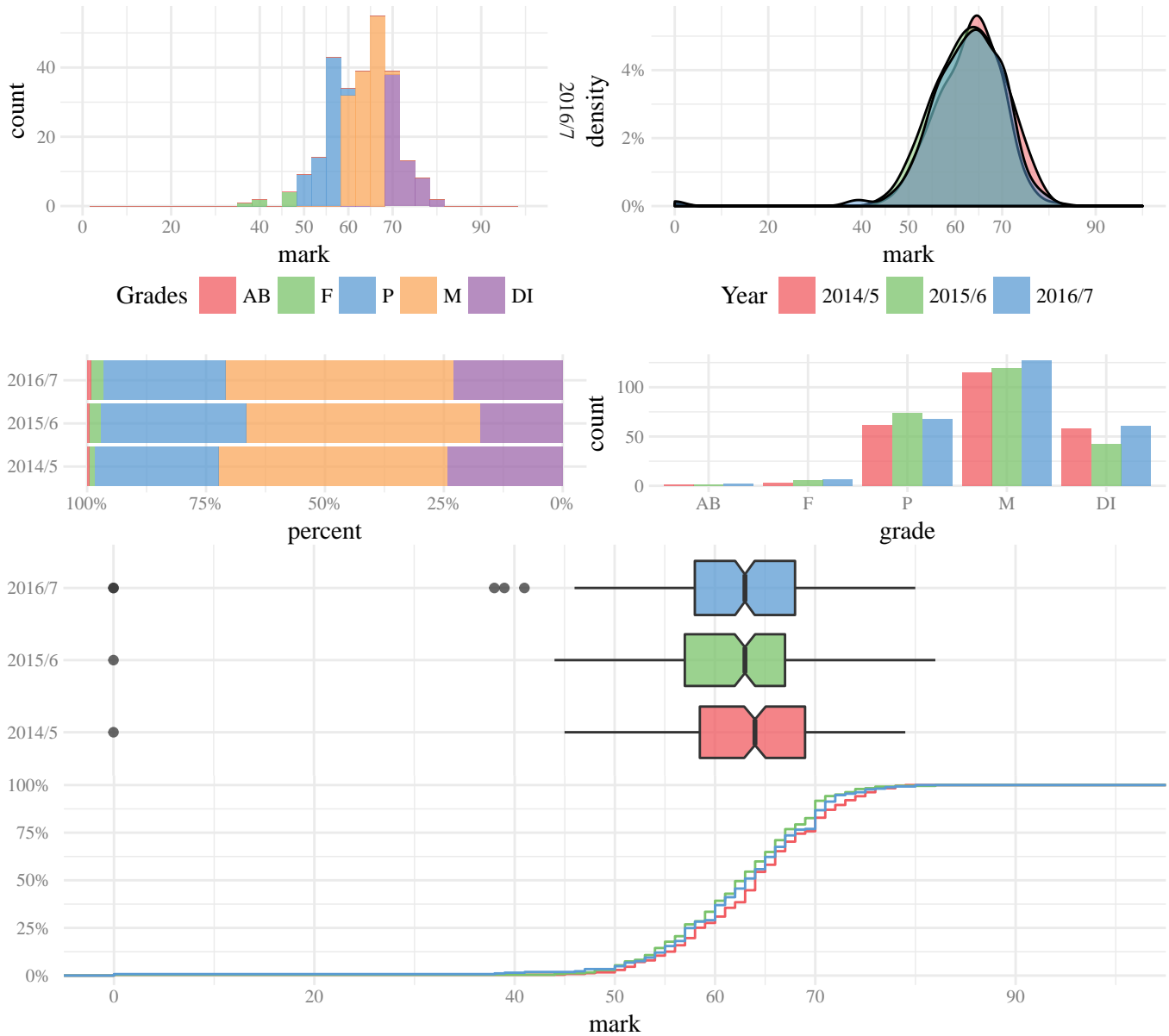
Year	n	mean	sd	min	q10	q25	median	q75	q90	q95	max
2014/5	50	66.80	5.48	57.00	60	63	66	71	73	76	78.00
2015/6	51	67.60	5.27	51.00	62	65	67	71	74	74	80.00

Table 11: Mark summary

Year	n	AB	F	P	M	DI	%:	AB	F	P	M	DI
2014/5	50	0	0	4	28	18		0.0	0.0	8.0	56.0	36.0
2015/6	51	0	0	3	28	20		0.0	0.0	5.9	54.9	39.2

Table 12: Grade summary (count and percentage)

MC408: Theories and Concepts in Media and Communications I (Key concepts and i...



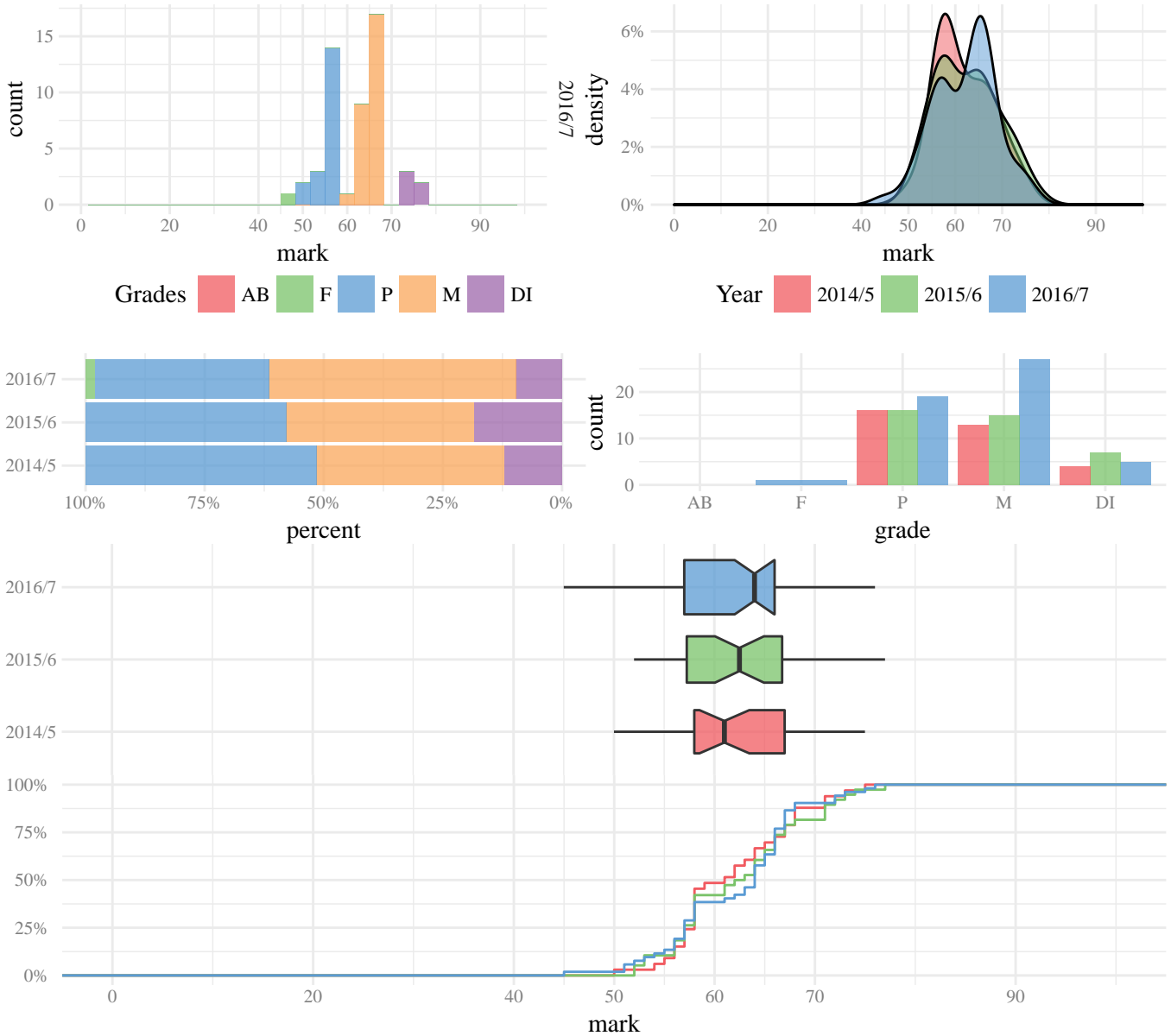
Year	n	mean	sd	min	q10	q25	median	q75	q90	q95	max
2014/5	239	63.50	7.99	0.00	54	58	64	69	73	75	79.00
2015/6	242	62.10	7.86	0.00	53	57	63	67	70	72	82.00
2016/7	265	62.40	8.97	0.00	54	58	63	68	71	72	80.00

Table 13: Mark summary

Year	n	AB	F	P	M	DI	%:	AB	F	P	M	DI
2014/5	239	1	3	62	115	58		0.4	1.3	25.9	48.1	24.3
2015/6	242	1	6	74	119	42		0.4	2.5	30.6	49.2	17.4
2016/7	265	2	7	68	127	61		0.8	2.6	25.7	47.9	23.0

Table 14: Grade summary (count and percentage)

MC409: Media, Technology and Everyday Life



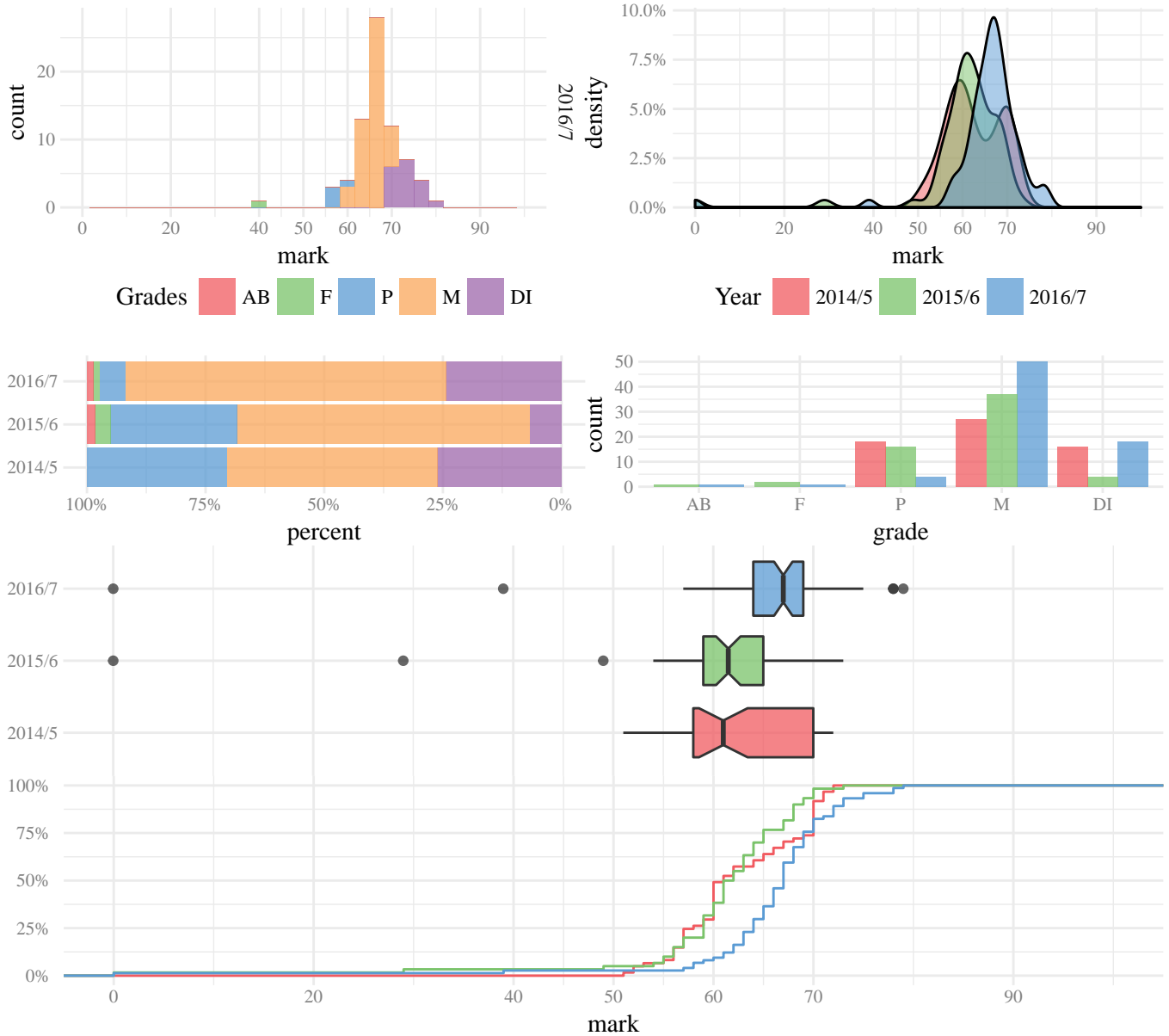
Year	n	mean	sd	min	q10	q25	median	q75	q90	q95	max
2014/5	33	61.90	6.05	50.00	56	58	61	67	70	71	75.00
2015/6	38	62.50	6.64	52.00	55	57	62	66	71	73	77.00
2016/7	52	62.20	6.55	45.00	54	57	64	66	68	72	76.00

Table 15: Mark summary

Year	n	AB	F	P	M	DI	%:	AB	F	P	M	DI
2014/5	33	0	0	16	13	4		0.0	0.0	48.5	39.4	12.1
2015/6	38	0	0	16	15	7		0.0	0.0	42.1	39.5	18.4
2016/7	52	0	1	19	27	5		0.0	1.9	36.5	51.9	9.6

Table 16: Grade summary (count and percentage)

MC411: Media and Globalization



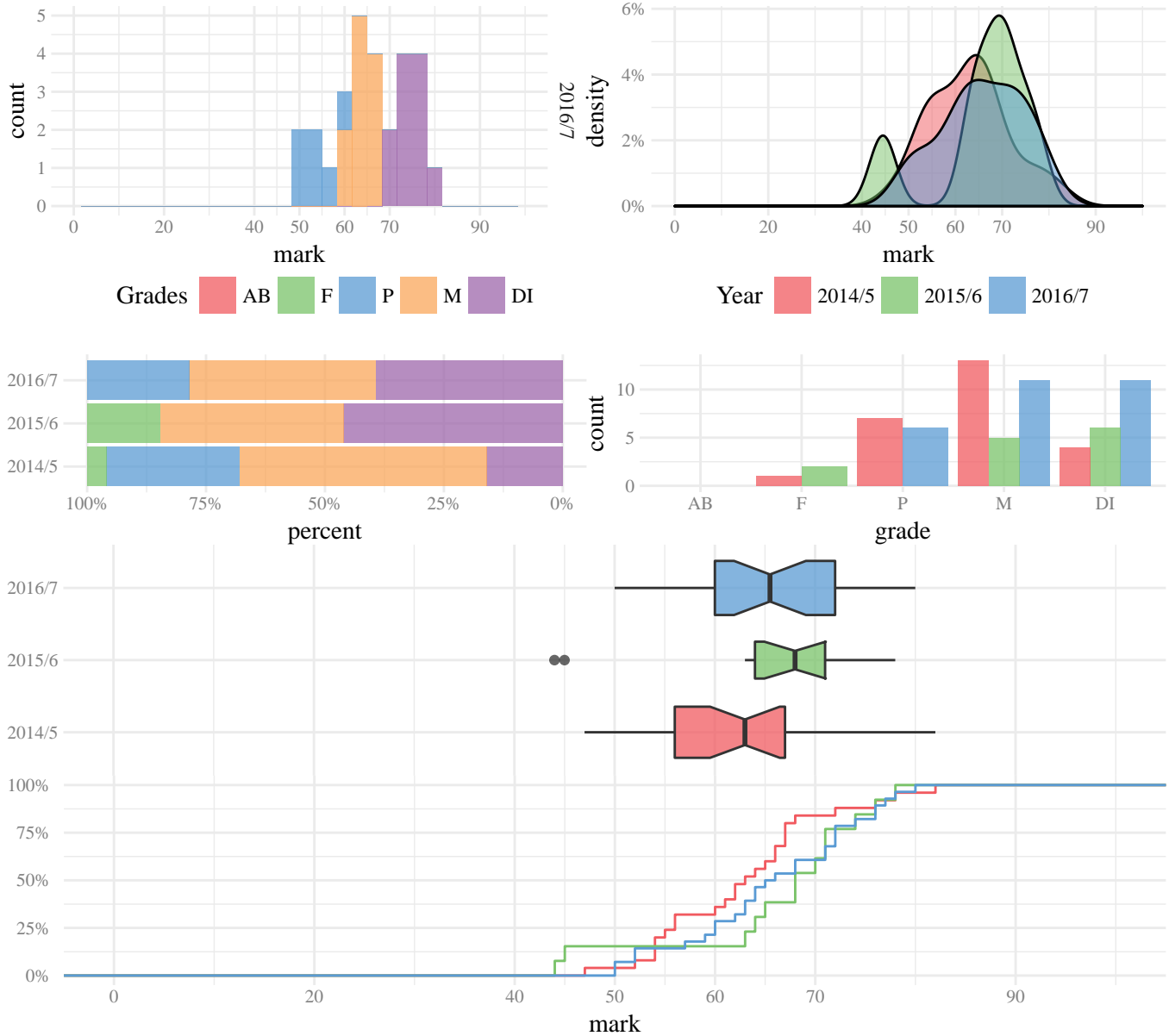
Year	n	mean	sd	min	q10	q25	median	q75	q90	q95	max
2014/5	61	62.60	5.98	51.00	56	58	61	70	70	71	72.00
2015/6	60	60.70	10.21	0.00	55	59	61	65	68	70	73.00
2016/7	74	65.80	9.54	0.00	61	64	67	69	72	75	79.00

Table 17: Mark summary

Year	n	AB	F	P	M	DI	%:	AB	F	P	M	DI
2014/5	61	0	0	18	27	16		0.0	0.0	29.5	44.3	26.2
2015/6	60	1	2	16	37	4		1.7	3.3	26.7	61.7	6.7
2016/7	74	1	1	4	50	18		1.4	1.4	5.4	67.6	24.3

Table 18: Grade summary (count and percentage)

MC413: Information, Communication and Knowledge Systems



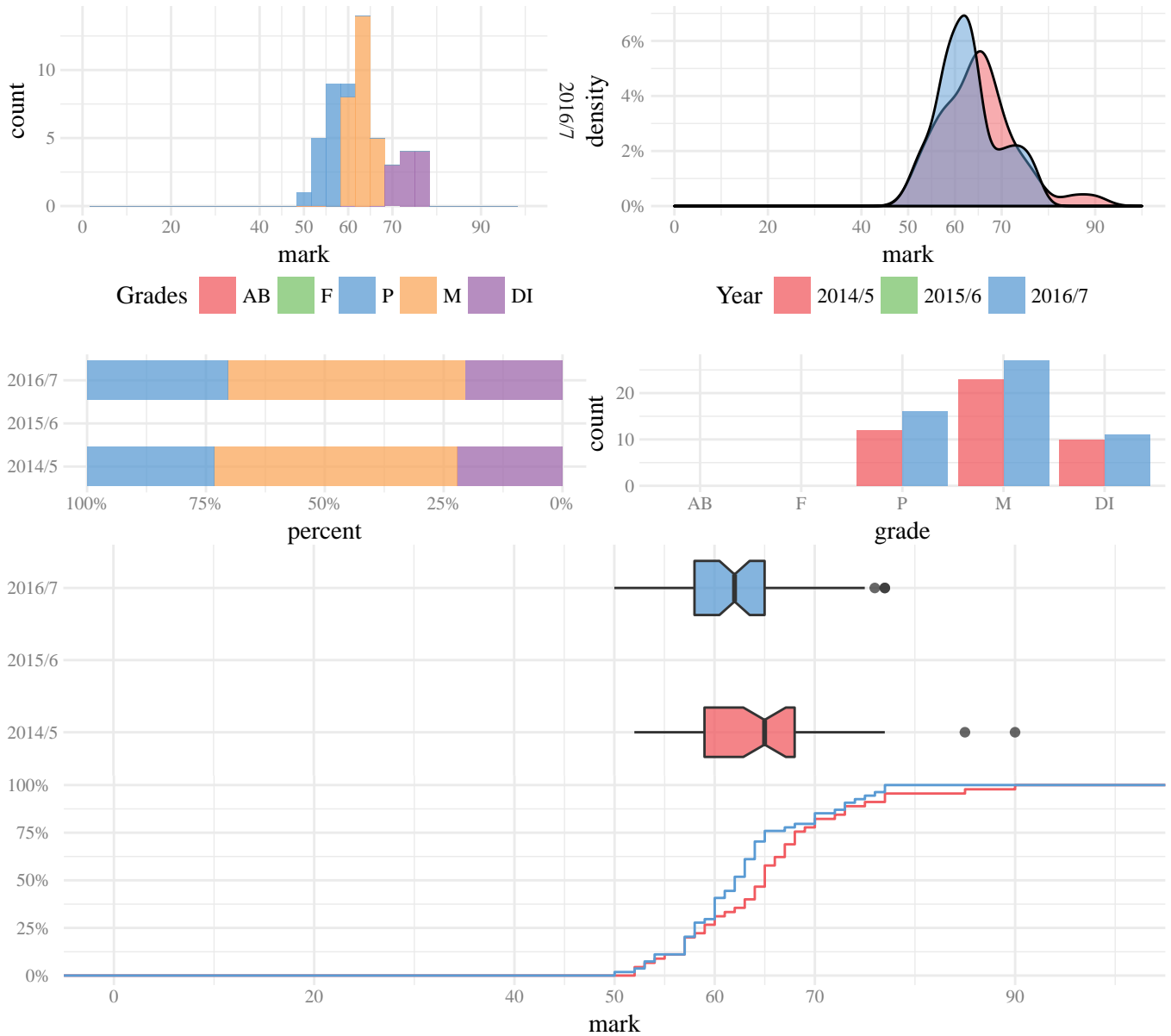
Year	n	mean	sd	min	q10	q25	median	q75	q90	q95	max
2014/5	25	63.00	8.49	47.00	54	56	63	67	74	77	82.00
2015/6	13	65.90	10.49	44.00	48	64	68	71	75	76	78.00
2016/7	28	65.80	8.69	50.00	52	60	65	72	76	77	80.00

Table 19: Mark summary

Year	n	AB	F	P	M	DI	%:	AB	F	P	M	DI
2014/5	25	0	1	7	13	4		0.0	4.0	28.0	52.0	16.0
2015/6	13	0	2	0	5	6		0.0	15.4	0.0	38.5	46.2
2016/7	28	0	0	6	11	11		0.0	0.0	21.4	39.3	39.3

Table 20: Grade summary (count and percentage)

MC416: Representation in the Age of Globalisation



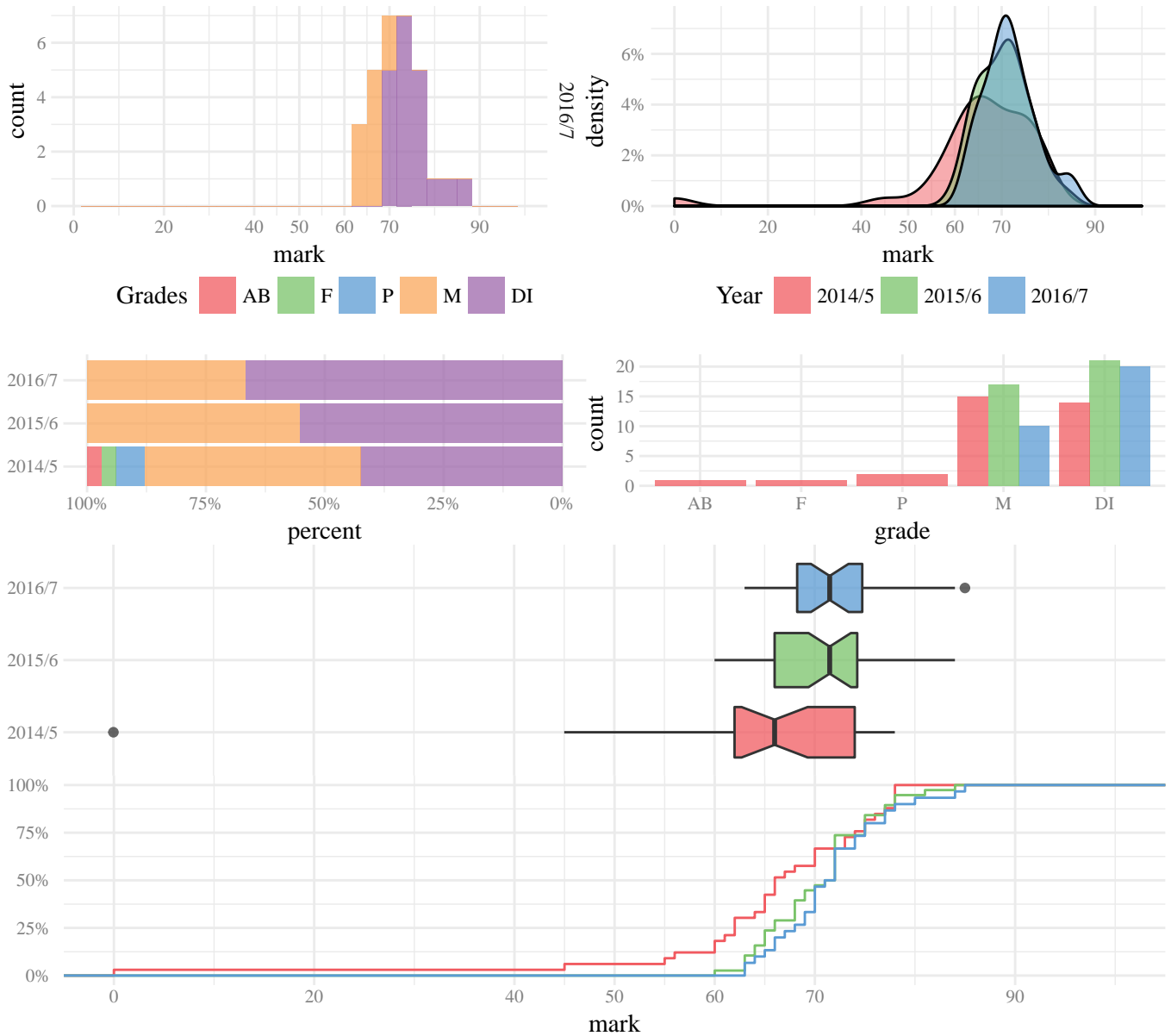
Year	n	mean	sd	min	q10	q25	median	q75	q90	q95	max
2014/5	45	65.00	8.07	52.00	55	59	65	68	74	77	90.00
2016/7	54	62.90	6.62	50.00	54	58	62	65	73	75	77.00

Table 21: Mark summary

Year	n	AB	F	P	M	DI	%:	AB	F	P	M	DI
2014/5	45	0	0	12	23	10		0.0	0.0	26.7	51.1	22.2
2016/7	54	0	0	16	27	11		0.0	0.0	29.6	50.0	20.4

Table 22: Grade summary (count and percentage)

MC417: Democracy and the Media



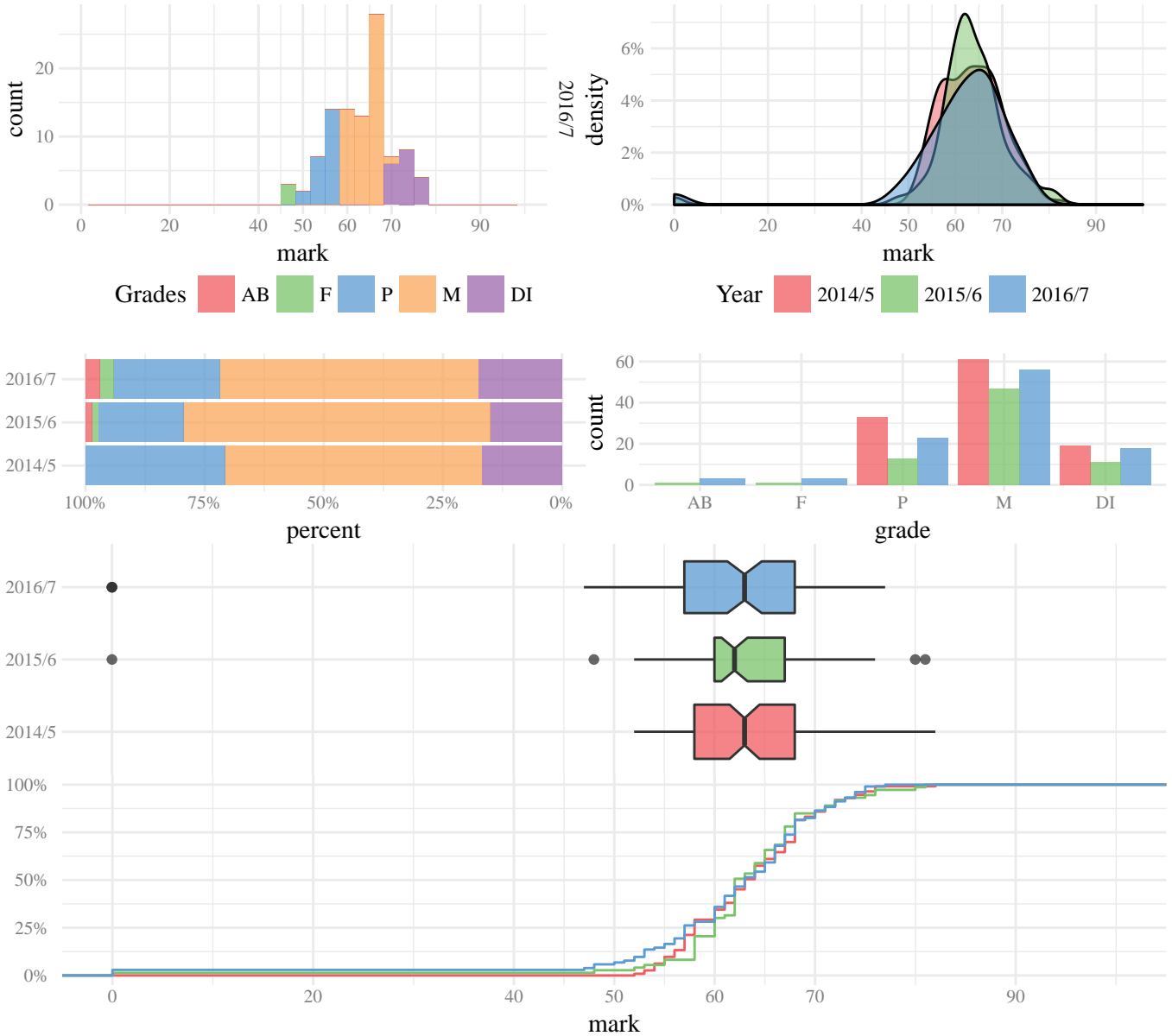
Year	n	mean	sd	min	q10	q25	median	q75	q90	q95	max
2014/5	33	65.50	14.07	0.00	56	62	66	74	77	78	78.00
2015/6	38	70.50	5.49	60.00	63	66	71	74	77	78	84.00
2016/7	30	71.70	5.60	63.00	64	68	71	74	78	82	85.00

Table 23: Mark summary

Year	n	AB	F	P	M	DI	%:	AB	F	P	M	DI
2014/5	33	1	1	2	15	14		3.0	3.0	6.1	45.5	42.4
2015/6	38	0	0	0	17	21		0.0	0.0	0.0	44.7	55.3
2016/7	30	0	0	0	10	20		0.0	0.0	0.0	33.3	66.7

Table 24: Grade summary (count and percentage)

MC418: Theories and Concepts in Media and Communications II (Processes of comm...



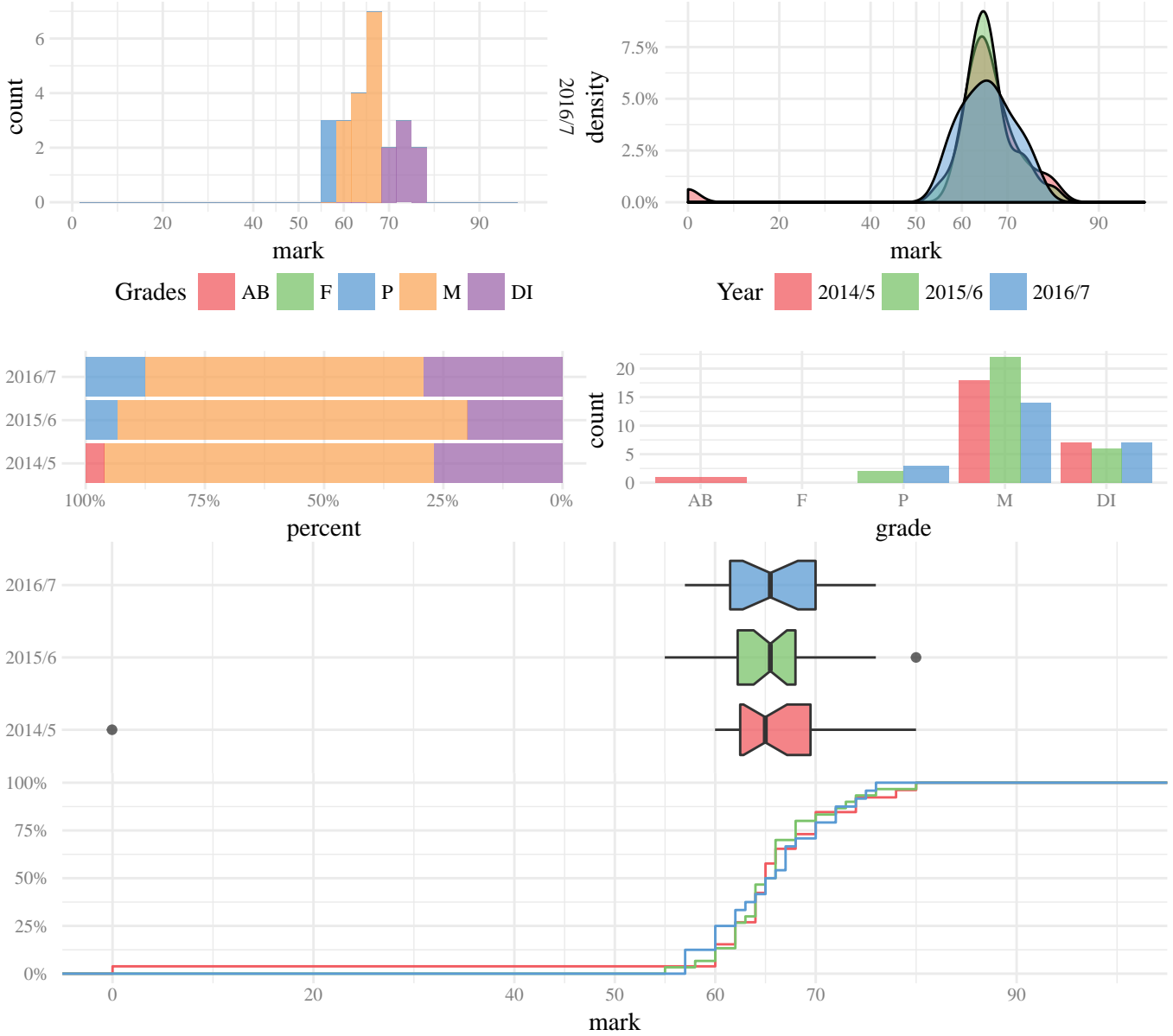
Year	n	mean	sd	min	q10	q25	median	q75	q90	q95	max
2014/5	113	63.60	6.27	52.00	56	58	63	68	72	74	82.00
2015/6	73	63.00	9.62	0.00	58	60	62	67	71	75	81.00
2016/7	103	61.30	12.61	0.00	53	57	63	68	72	74	77.00

Table 25: Mark summary

Year	n	AB	F	P	M	DI	%:	AB	F	P	M	DI
2014/5	113	0	0	33	61	19		0.0	0.0	29.2	54.0	16.8
2015/6	73	1	1	13	47	11		1.4	1.4	17.8	64.4	15.1
2016/7	103	3	3	23	56	18		2.9	2.9	22.3	54.4	17.5

Table 26: Grade summary (count and percentage)

MC419: Modern Campaigning Politics



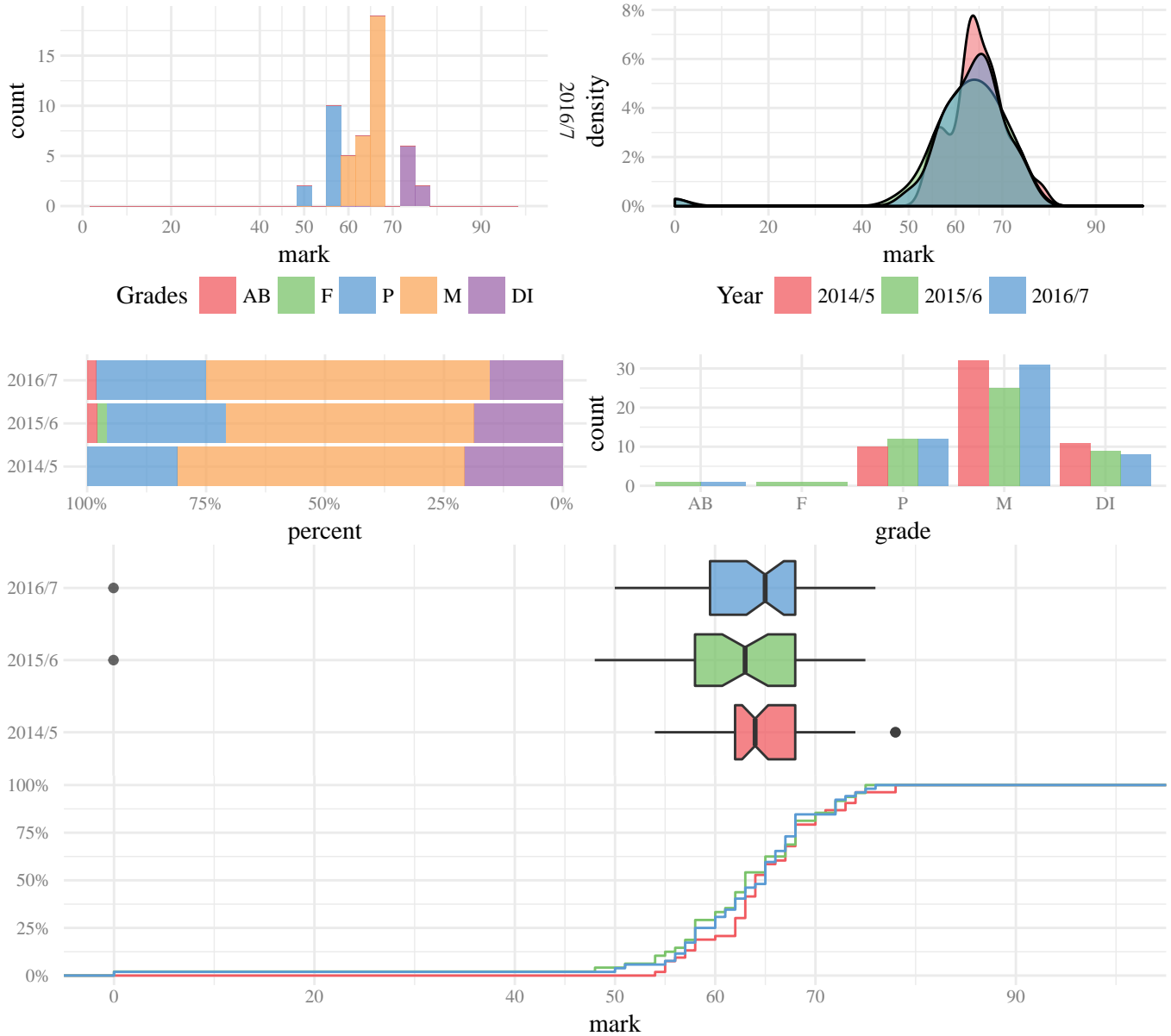
Year	n	mean	sd	min	q10	q25	median	q75	q90	q95	max
2014/5	26	64.10	14.09	0.00	60	62	65	69	74	77	80.00
2015/6	30	65.80	5.33	55.00	60	62	65	68	73	75	80.00
2016/7	24	65.70	5.72	57.00	57	61	65	70	73	74	76.00

Table 27: Mark summary

Year	n	AB	F	P	M	DI	%:	AB	F	P	M	DI
2014/5	26	1	0	0	18	7		3.8	0.0	0.0	69.2	26.9
2015/6	30	0	0	2	22	6		0.0	0.0	6.7	73.3	20.0
2016/7	24	0	0	3	14	7		0.0	0.0	12.5	58.3	29.2

Table 28: Grade summary (count and percentage)

MC420: Identity, Transnationalism and the Media



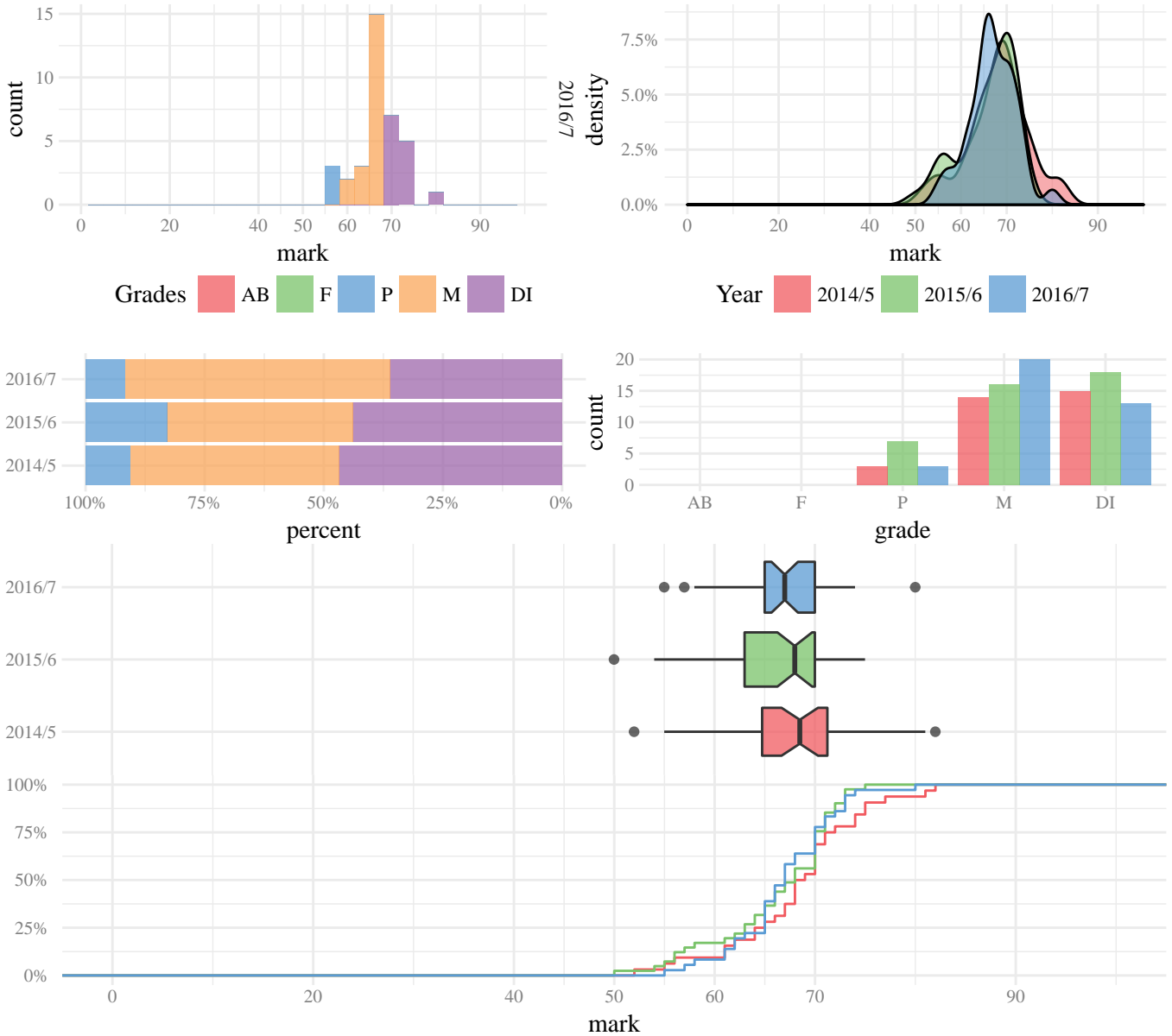
Year	n	mean	sd	min	q10	q25	median	q75	q90	q95	max
2014/5	53	64.80	5.83	54.00	57	62	64	68	73	74	78.00
2015/6	48	62.20	11.18	0.00	54	58	63	68	72	73	75.00
2016/7	52	62.70	10.67	0.00	56	59	65	68	72	73	76.00

Table 29: Mark summary

Year	n	AB	F	P	M	DI	%:	AB	F	P	M	DI
2014/5	53	0	0	10	32	11		0.0	0.0	18.9	60.4	20.8
2015/6	48	1	1	12	25	9		2.1	2.1	25.0	52.1	18.8
2016/7	52	1	0	12	31	8		1.9	0.0	23.1	59.6	15.4

Table 30: Grade summary (count and percentage)

MC421: Critical Approaches to Media, Communication and Development



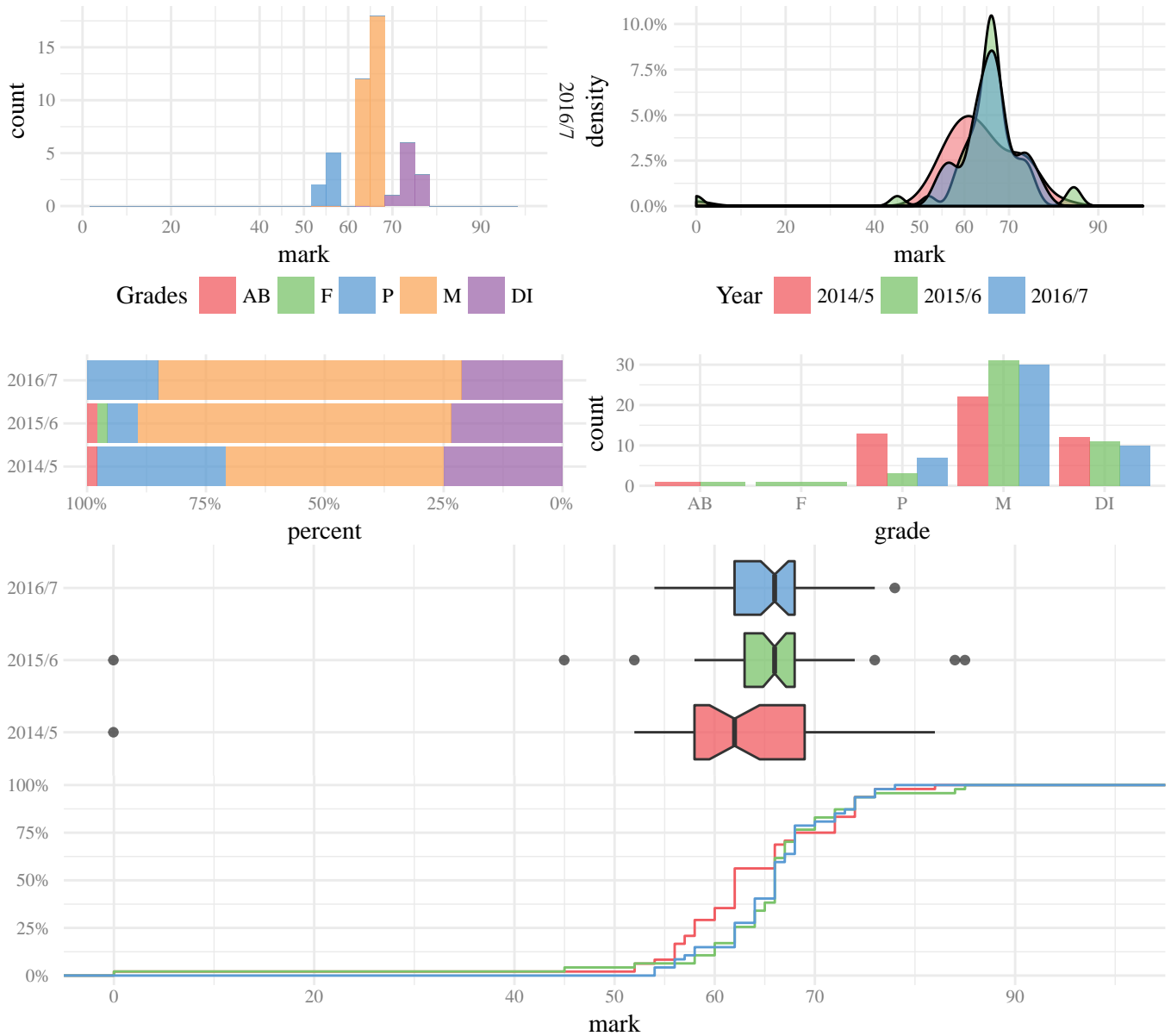
Year	n	mean	sd	min	q10	q25	median	q75	q90	q95	max
2014/5	32	68.20	6.77	52.00	61	64	68	71	75	78	82.00
2015/6	41	66.10	6.08	50.00	56	63	68	70	72	73	75.00
2016/7	36	66.90	5.13	55.00	61	65	67	70	73	73	80.00

Table 31: Mark summary

Year	n	AB	F	P	M	DI	%:	AB	F	P	M	DI
2014/5	32	0	0	3	14	15		0.0	0.0	9.4	43.8	46.9
2015/6	41	0	0	7	16	18		0.0	0.0	17.1	39.0	43.9
2016/7	36	0	0	3	20	13		0.0	0.0	8.3	55.6	36.1

Table 32: Grade summary (count and percentage)

MC422: Critical Studies in Media and Journalism



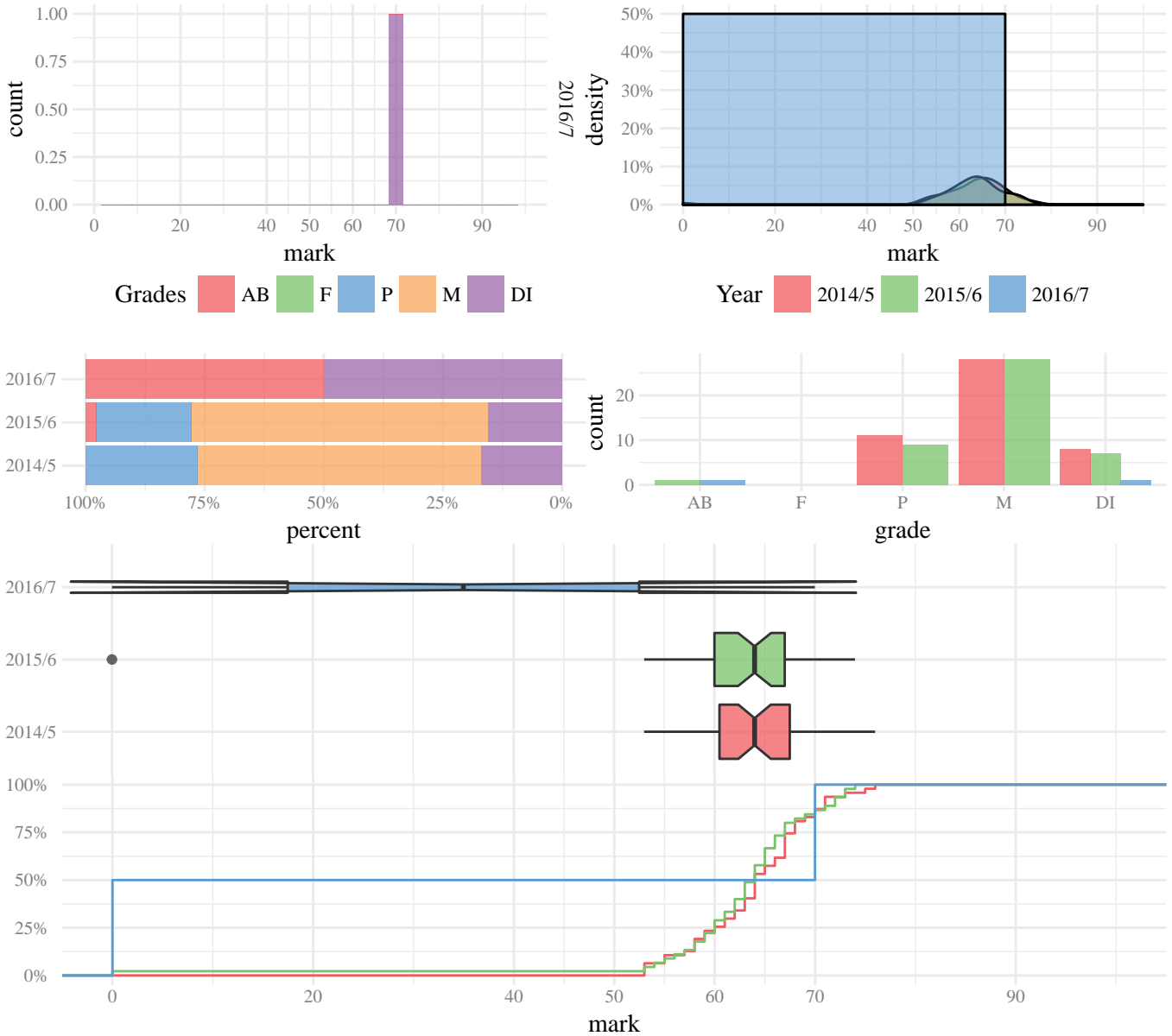
Year	n	mean	sd	min	q10	q25	median	q75	q90	q95	max
2014/5	48	62.90	11.71	0.00	56	58	62	69	74	75	82.00
2015/6	47	64.80	11.76	0.00	59	63	66	68	74	75	85.00
2016/7	47	65.80	5.74	54.00	57	62	66	68	74	75	78.00

Table 33: Mark summary

Year	n	AB	F	P	M	DI	%:	AB	F	P	M	DI
2014/5	48	1	0	13	22	12		2.1	0.0	27.1	45.8	25.0
2015/6	47	1	1	3	31	11		2.1	2.1	6.4	66.0	23.4
2016/7	47	0	0	7	30	10		0.0	0.0	14.9	63.8	21.3

Table 34: Grade summary (count and percentage)

MC423: Global Media Industries



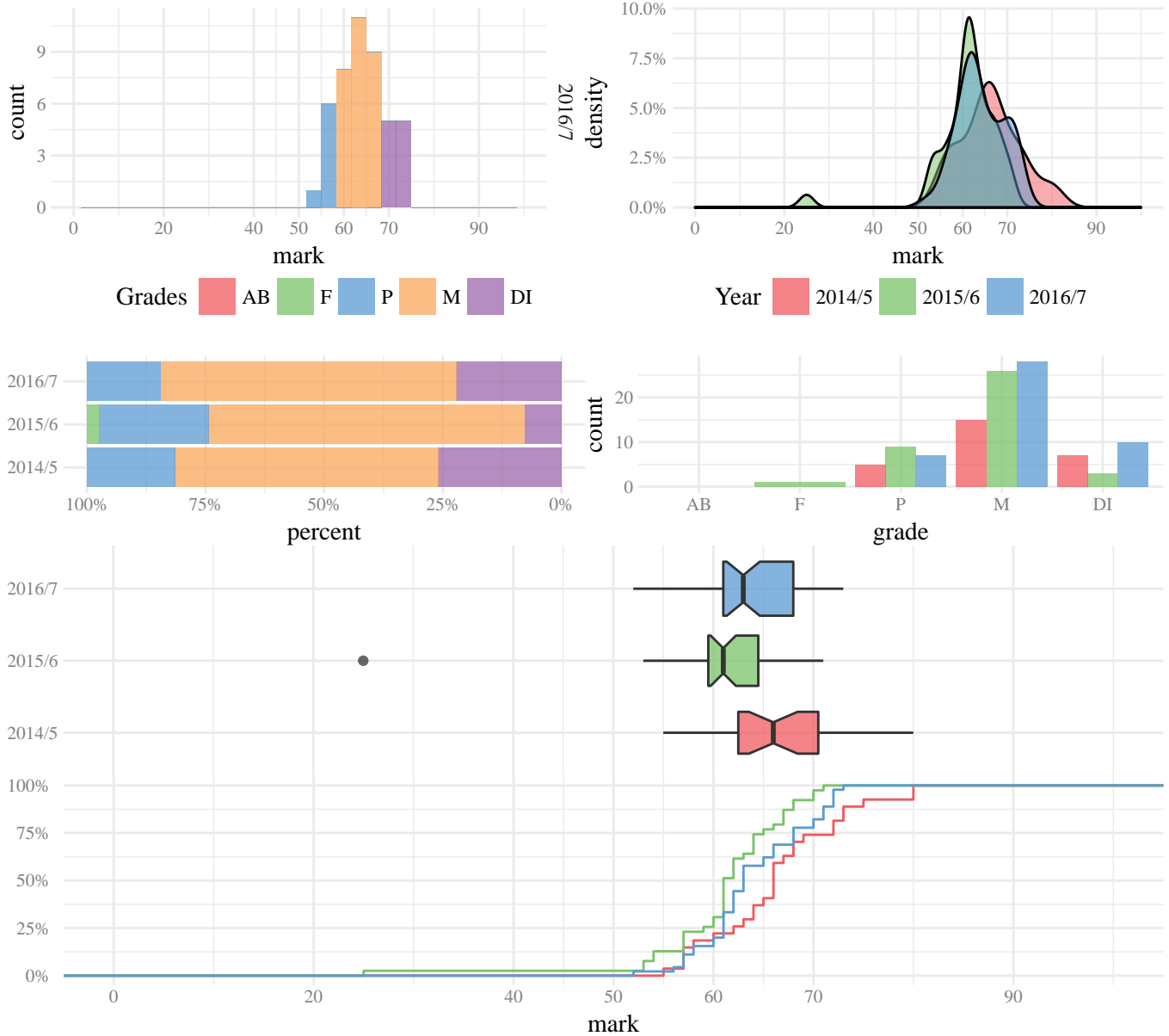
Year	n	mean	sd	min	q10	q25	median	q75	q90	q95	max
2014/5	47	64.10	5.67	53.00	56	60	64	67	71	72	76.00
2015/6	45	62.40	10.82	0.00	56	60	64	67	71	72	74.00
2016/7	2	35.00	49.50	0.00	7	17	35	52	62	66	70.00

Table 35: Mark summary

Year	n	AB	F	P	M	DI	%:	AB	F	P	M	DI
2014/5	47	0	0	11	28	8		0.0	0.0	23.4	59.6	17.0
2015/6	45	1	0	9	28	7		2.2	0.0	20.0	62.2	15.6
2016/7	2	1	0	0	0	1		50.0	0.0	0.0	0.0	50.0

Table 36: Grade summary (count and percentage)

MC424: Media and Communication Governance



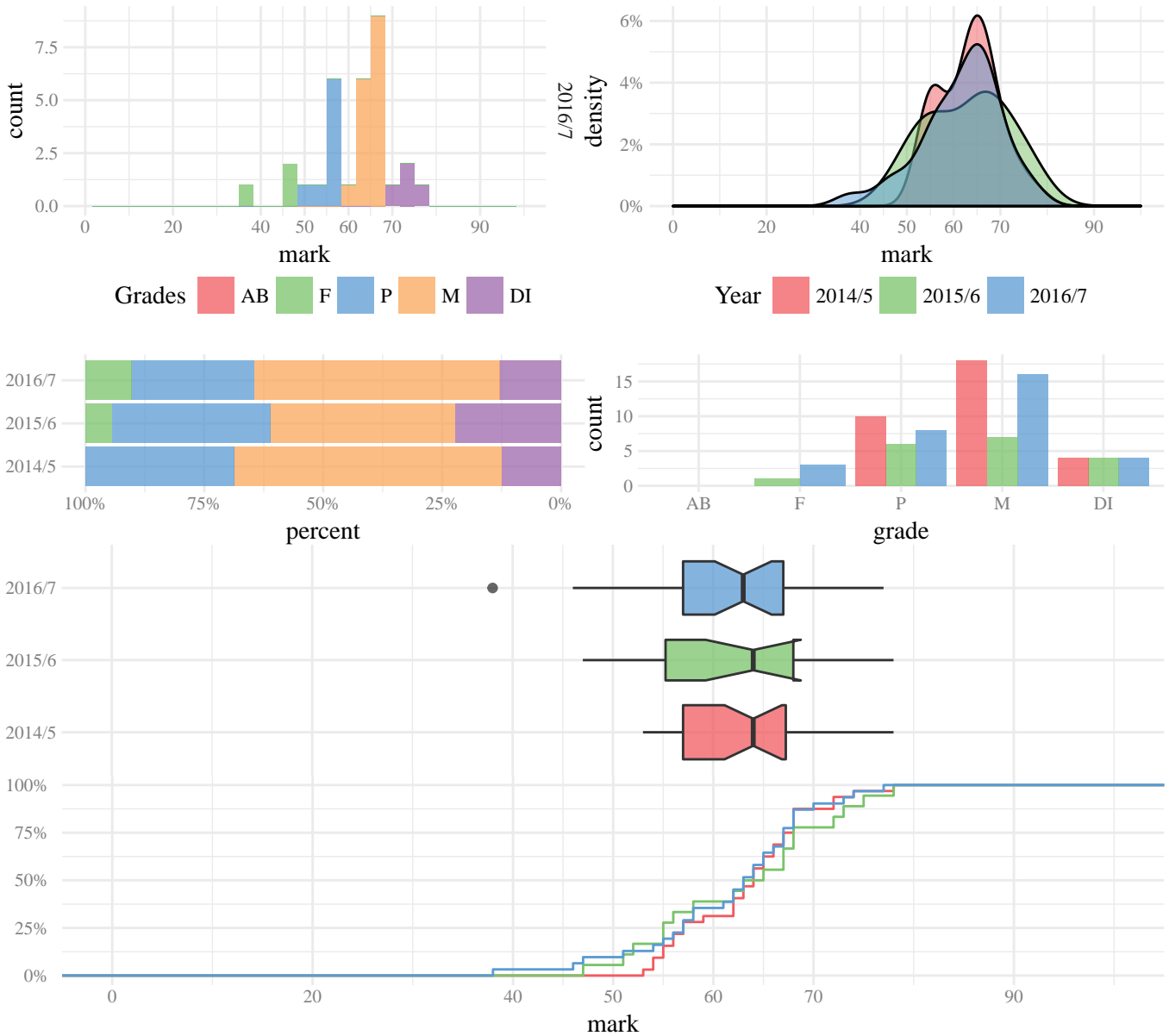
Year	n	mean	sd	min	q10	q25	median	q75	q90	q95	max
2014/5	27	66.30	6.67	55.00	57	62	66	70	73	78	80.00
2015/6	39	61.00	7.51	25.00	54	59	61	64	68	70	71.00
2016/7	45	64.10	5.16	52.00	57	61	63	68	71	72	73.00

Table 37: Mark summary

Year	n	AB	F	P	M	DI	%:	AB	F	P	M	DI
2014/5	27	0	0	5	15	7		0.0	0.0	18.5	55.6	25.9
2015/6	39	0	1	9	26	3		0.0	2.6	23.1	66.7	7.7
2016/7	45	0	0	7	28	10		0.0	0.0	15.6	62.2	22.2

Table 38: Grade summary (count and percentage)

MC425: Interpersonal Mediated Communication



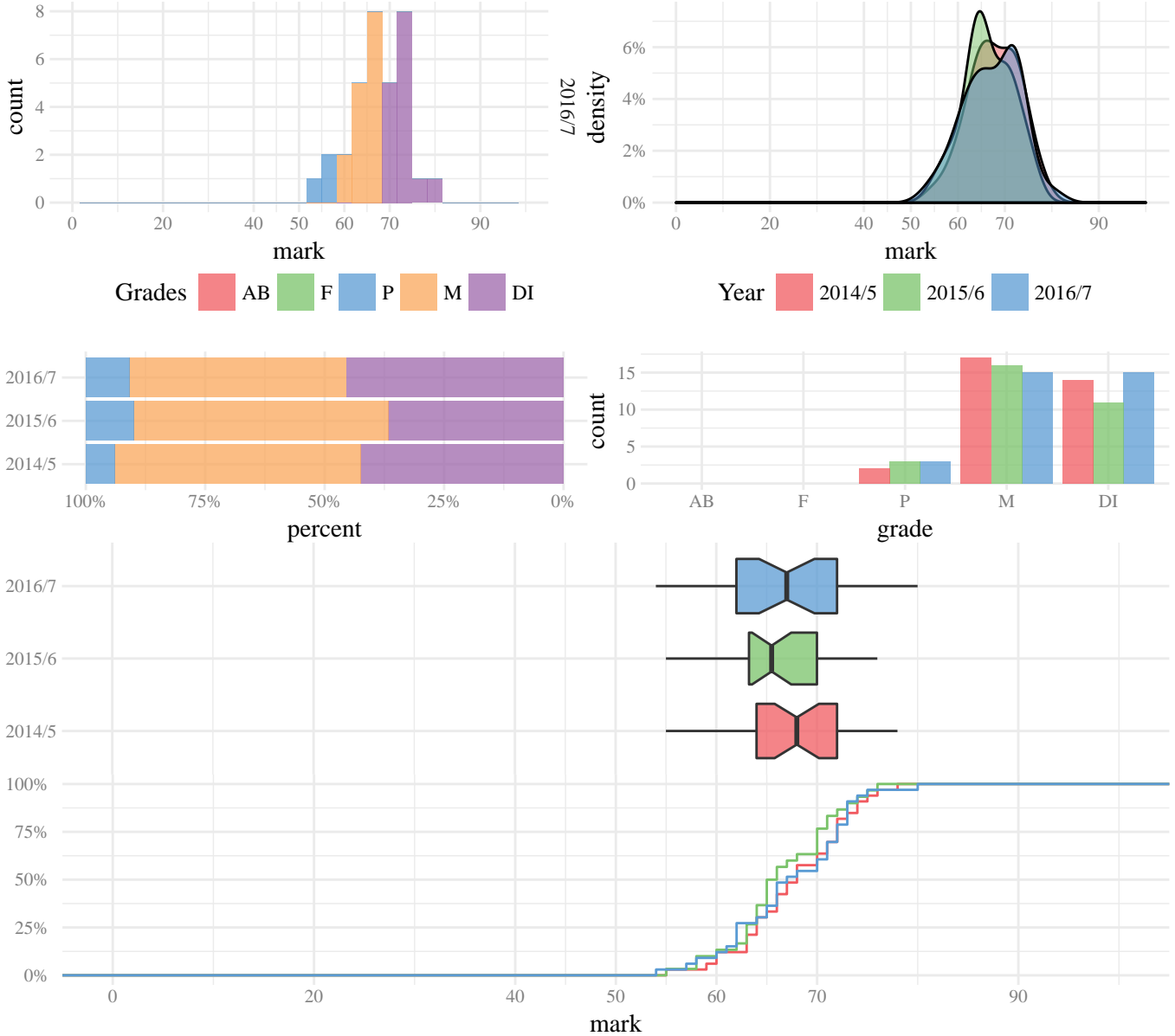
Year	n	mean	sd	min	q10	q25	median	q75	q90	q95	max
2014/5	32	63.20	6.34	53.00	55	57	64	67	71	72	78.00
2015/6	18	62.90	8.94	47.00	51	55	64	68	73	75	78.00
2016/7	31	61.60	8.54	38.00	51	57	63	67	70	73	77.00

Table 39: Mark summary

Year	n	AB	F	P	M	DI	%:	AB	F	P	M	DI
2014/5	32	0	0	10	18	4		0.0	0.0	31.2	56.2	12.5
2015/6	18	0	1	6	7	4		0.0	5.6	33.3	38.9	22.2
2016/7	31	0	3	8	16	4		0.0	9.7	25.8	51.6	12.9

Table 40: Grade summary (count and percentage)

MC426: Film Theory and World Cinema



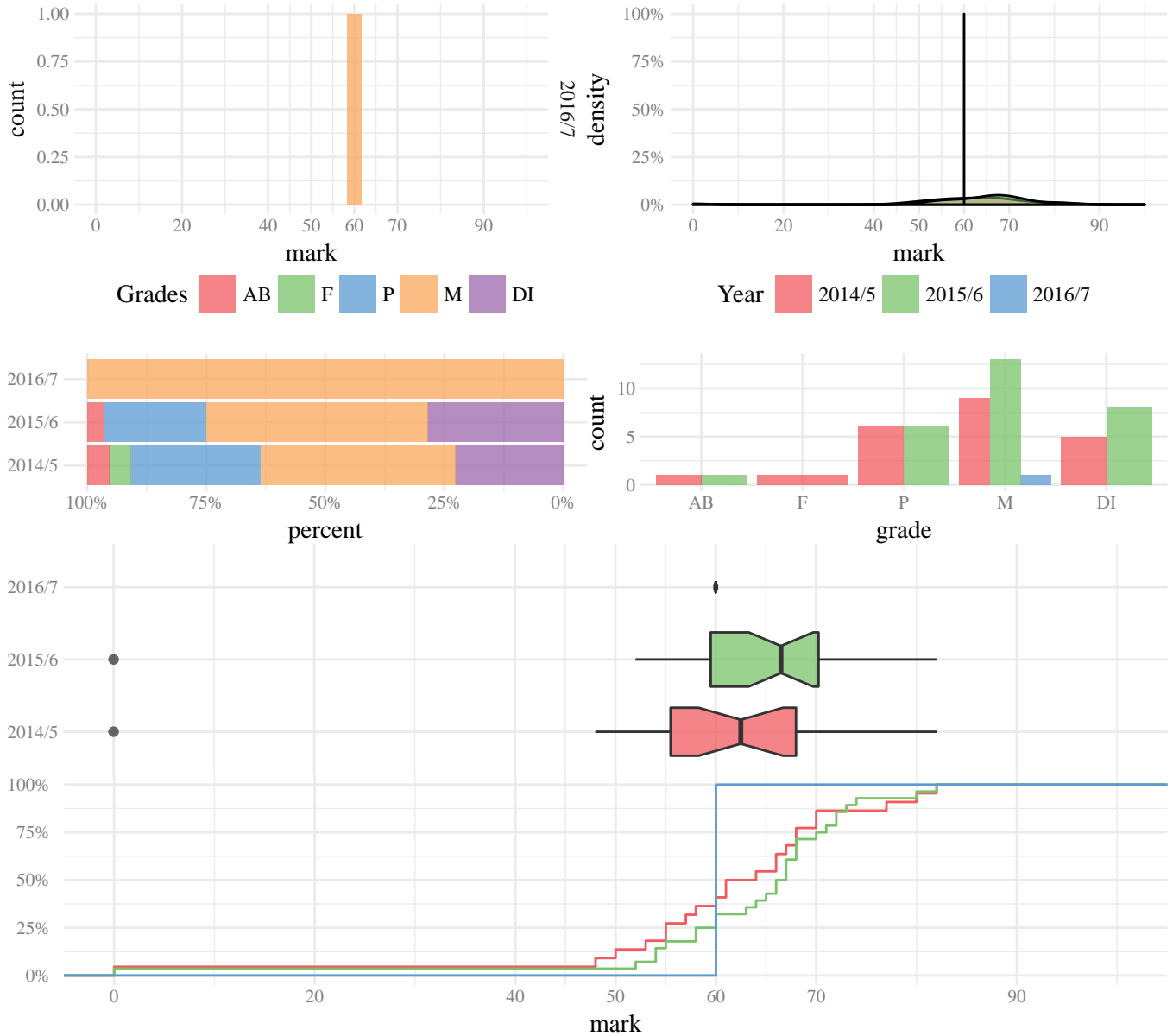
Year	n	mean	sd	min	q10	q25	median	q75	q90	q95	max
2014/5	33	67.80	5.37	55.00	60	64	68	72	74	75	78.00
2015/6	30	66.40	5.21	55.00	59	63	65	70	73	74	76.00
2016/7	33	67.30	5.92	54.00	60	62	67	72	73	74	80.00

Table 41: Mark summary

Year	n	AB	F	P	M	DI	%:	AB	F	P	M	DI
2014/5	33	0	0	2	17	14		0.0	0.0	6.1	51.5	42.4
2015/6	30	0	0	3	16	11		0.0	0.0	10.0	53.3	36.7
2016/7	33	0	0	3	15	15		0.0	0.0	9.1	45.5	45.5

Table 42: Grade summary (count and percentage)

MC427: Digital Media Futures



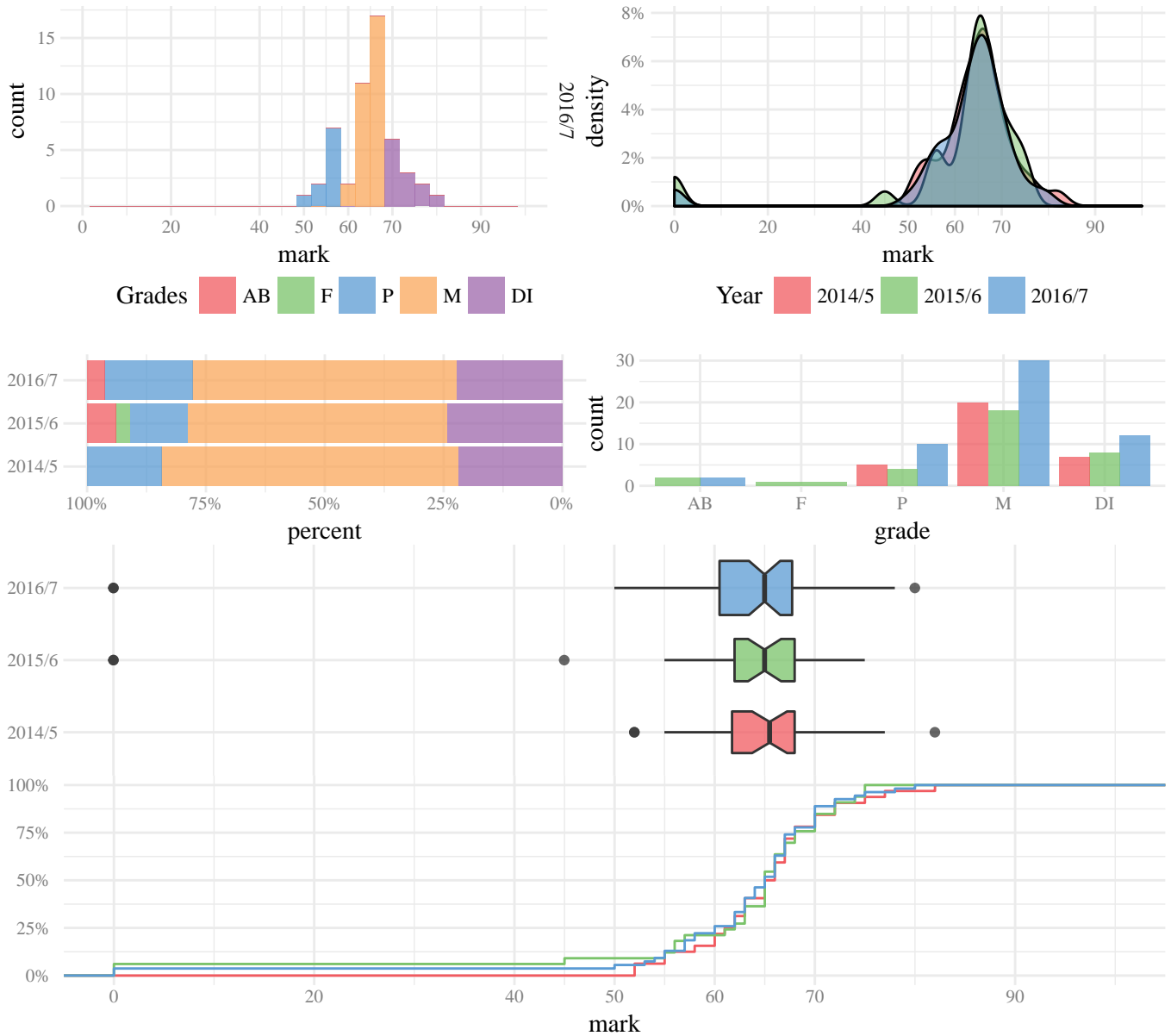
Year	n	mean	sd	min	q10	q25	median	q75	q90	q95	max
2014/5	22	60.70	16.31	0.00	50	55	62	68	76	79	82.00
2015/6	28	63.40	14.49	0.00	54	59	66	70	73	77	82.00
2016/7	1	60.00		60.00	60	60	60	60	60	60	60.00

Table 43: Mark summary

Year	n	AB	F	P	M	DI	%:	AB	F	P	M	DI
2014/5	22	1	1	6	9	5		4.5	4.5	27.3	40.9	22.7
2015/6	28	1	0	6	13	8		3.6	0.0	21.4	46.4	28.6
2016/7	1	0	0	0	1	0		0.0	0.0	0.0	100.0	0.0

Table 44: Grade summary (count and percentage)

MC428: Media Culture and Neoliberalism in the Global South



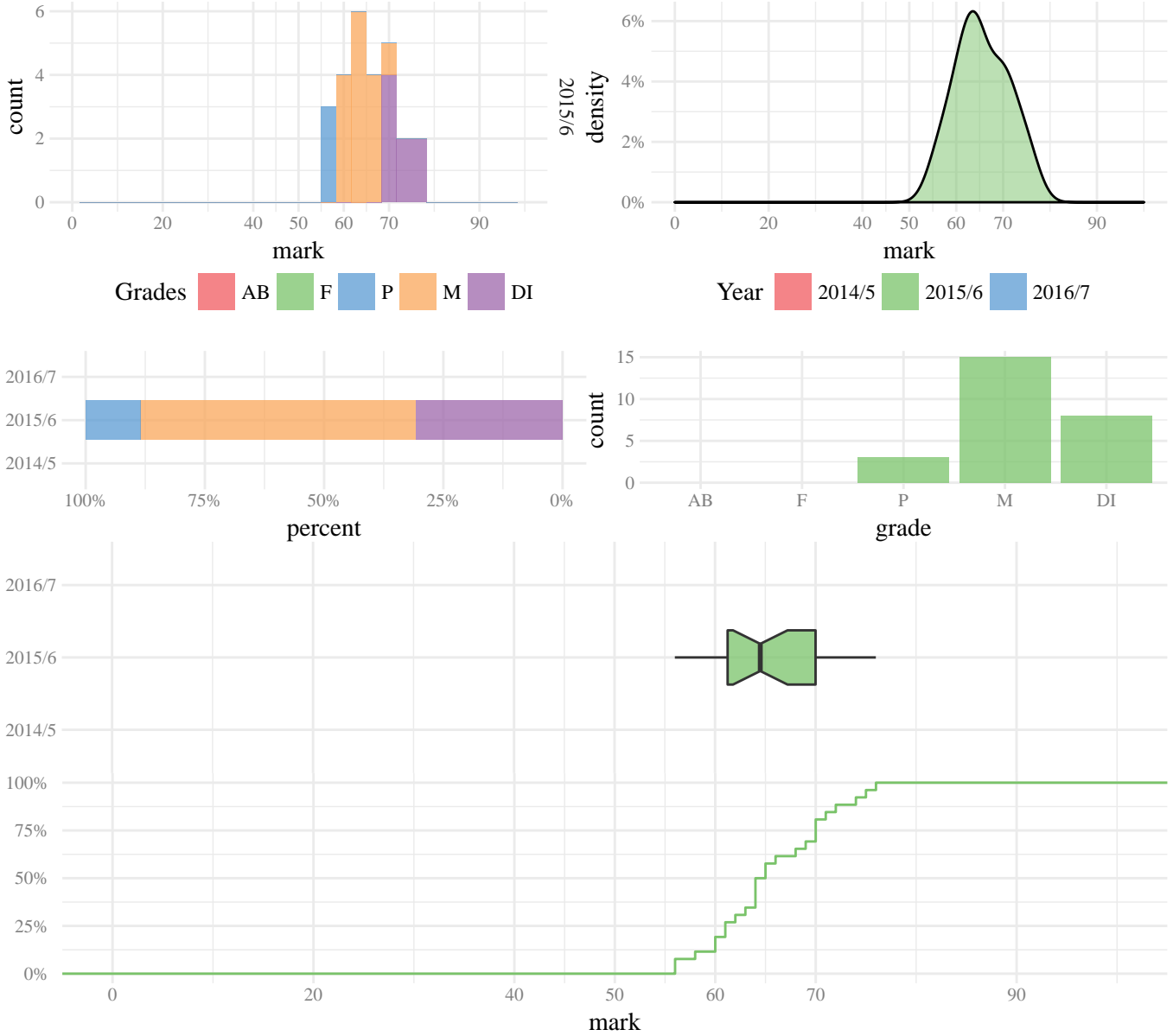
Year	n	mean	sd	min	q10	q25	median	q75	q90	q95	max
2014/5	32	65.00	6.72	52.00	55	61	65	68	72	75	82.00
2015/6	33	61.10	16.96	0.00	55	62	65	68	72	74	75.00
2016/7	54	62.30	13.75	0.00	55	60	65	67	71	74	80.00

Table 45: Mark summary

Year	n	AB	F	P	M	DI	%:	AB	F	P	M	DI
2014/5	32	0	0	5	20	7		0.0	0.0	15.6	62.5	21.9
2015/6	33	2	1	4	18	8		6.1	3.0	12.1	54.5	24.2
2016/7	54	2	0	10	30	12		3.7	0.0	18.5	55.6	22.2

Table 46: Grade summary (count and percentage)

MC429: Humanitarian Communication: vulnerability, discourse and power



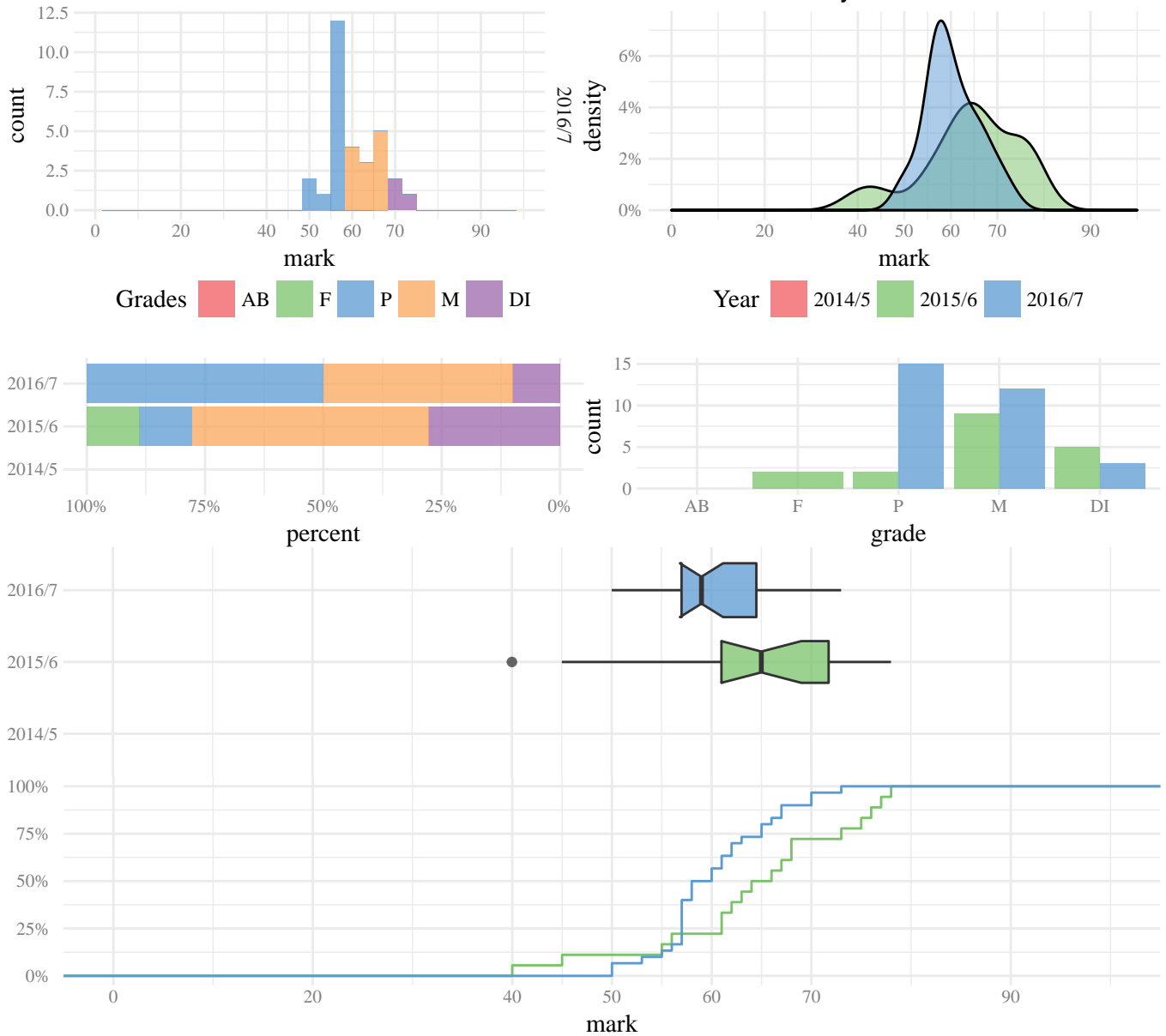
Year	n	mean	sd	min	q10	q25	median	q75	q90	q95	max
2015/6	26	65.50	5.62	56.00	59	61	64	70	73	74	76.00

Table 47: Mark summary

Year	n	AB	F	P	M	DI	?:	AB	F	P	M	DI
2015/6	26	0	0	3	15	8		0.0	0.0	11.5	57.7	30.8

Table 48: Grade summary (count and percentage)

MC430: Data in Communication and Society



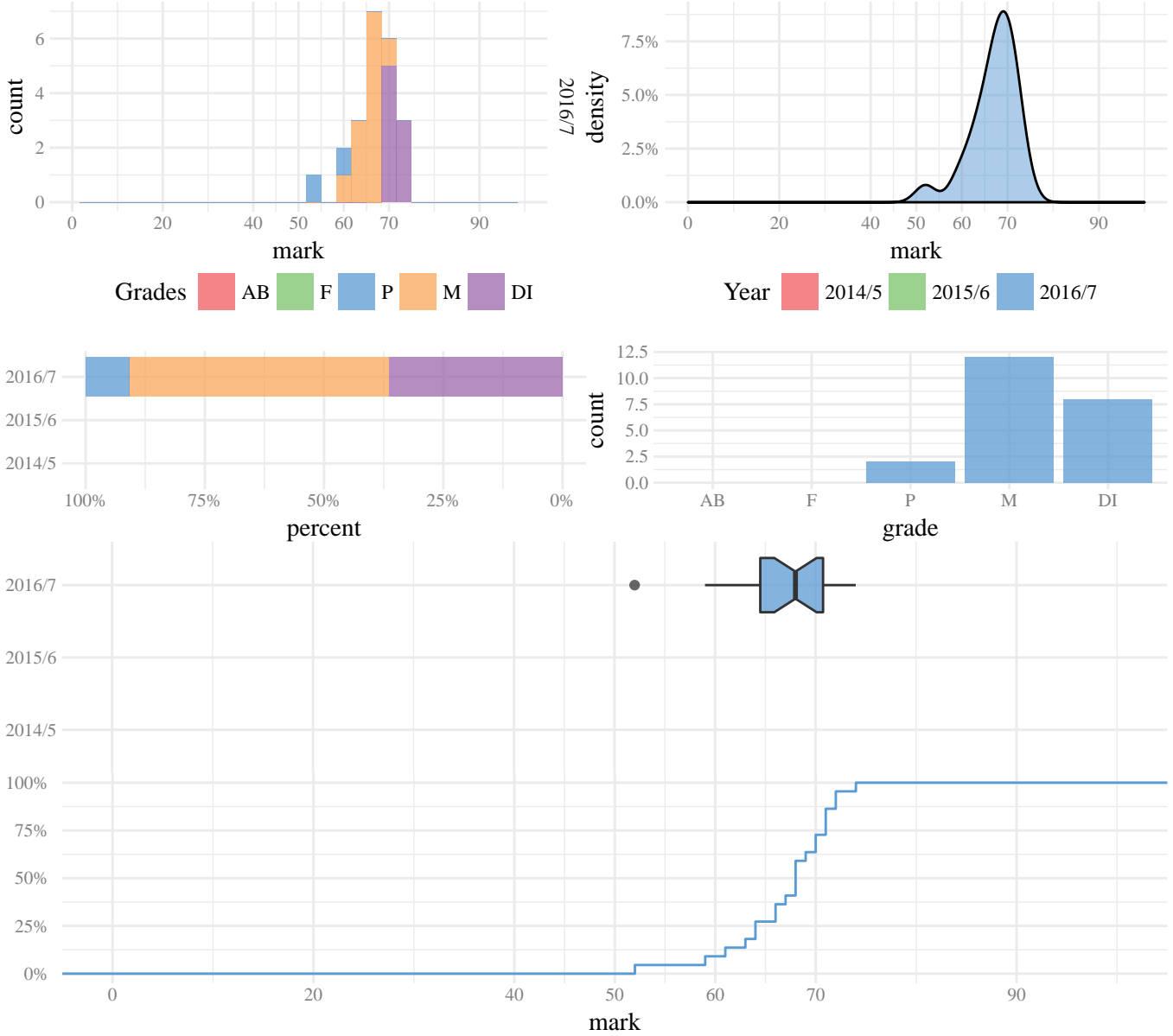
Year	n	mean	sd	min	q10	q25	median	q75	q90	q95	max
2015/6	18	64.20	10.46	40.00	52	61	65	71	76	77	78.00
2016/7	30	60.30	5.68	50.00	54	57	59	64	67	70	73.00

Table 49: Mark summary

Year	n	AB	F	P	M	DI	%:	AB	F	P	M	DI
2015/6	18	0	2	2	9	5		0.0	11.1	11.1	50.0	27.8
2016/7	30	0	0	15	12	3		0.0	0.0	50.0	40.0	10.0

Table 50: Grade summary (count and percentage)

MC433: Technology and Justice



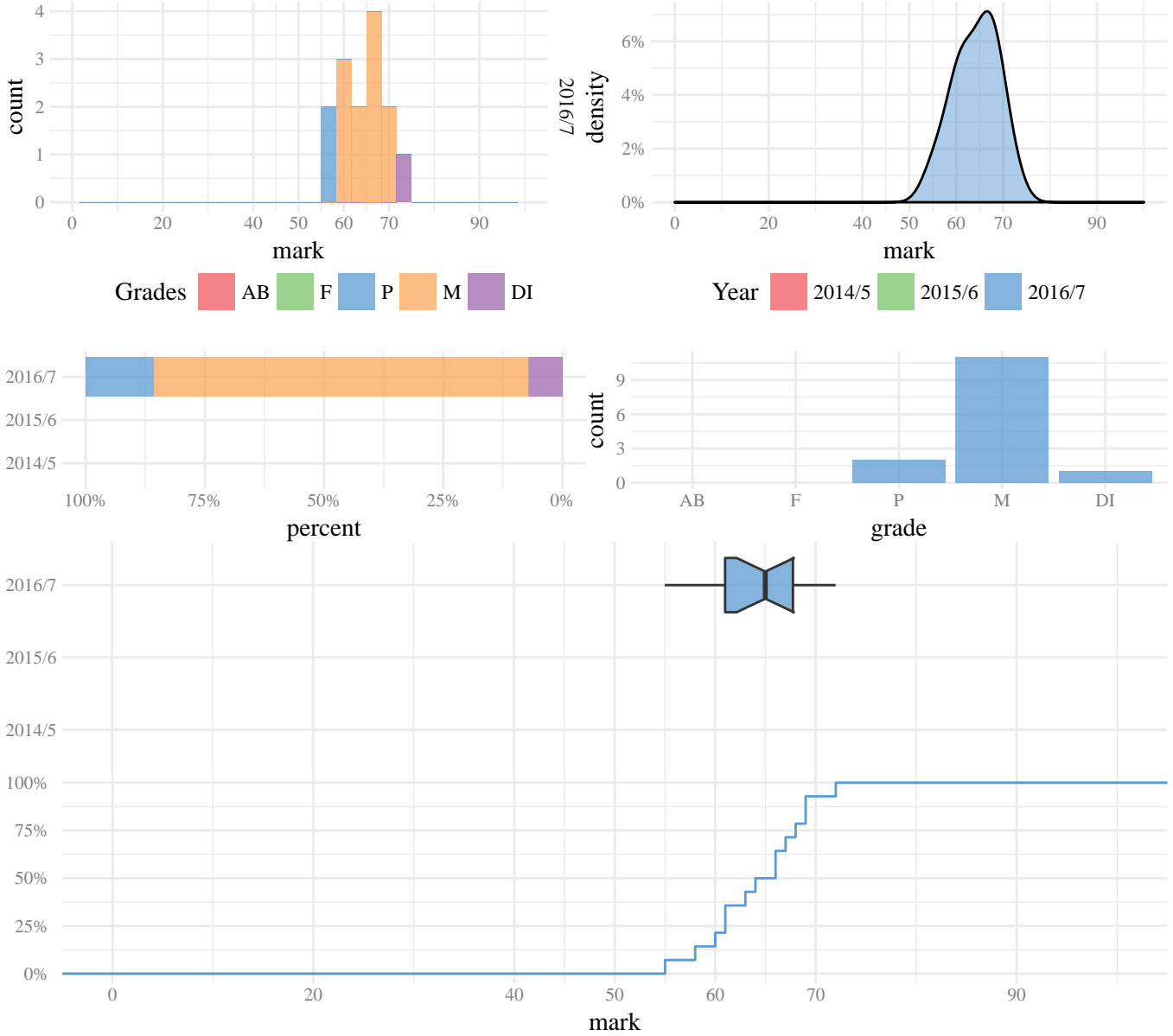
Year	n	mean	sd	min	q10	q25	median	q75	q90	q95	max
2016/7	22	67.00	5.04	52.00	61	64	68	70	71	72	74.00

Table 51: Mark summary

Year	n	AB	F	P	M	DI	%:	AB	F	P	M	DI
2016/7	22	0	0	2	12	8		0.0	0.0	9.1	54.5	36.4

Table 52: Grade summary (count and percentage)

MC434: Digital Platforms and Media Infrastructures: Societal Issues



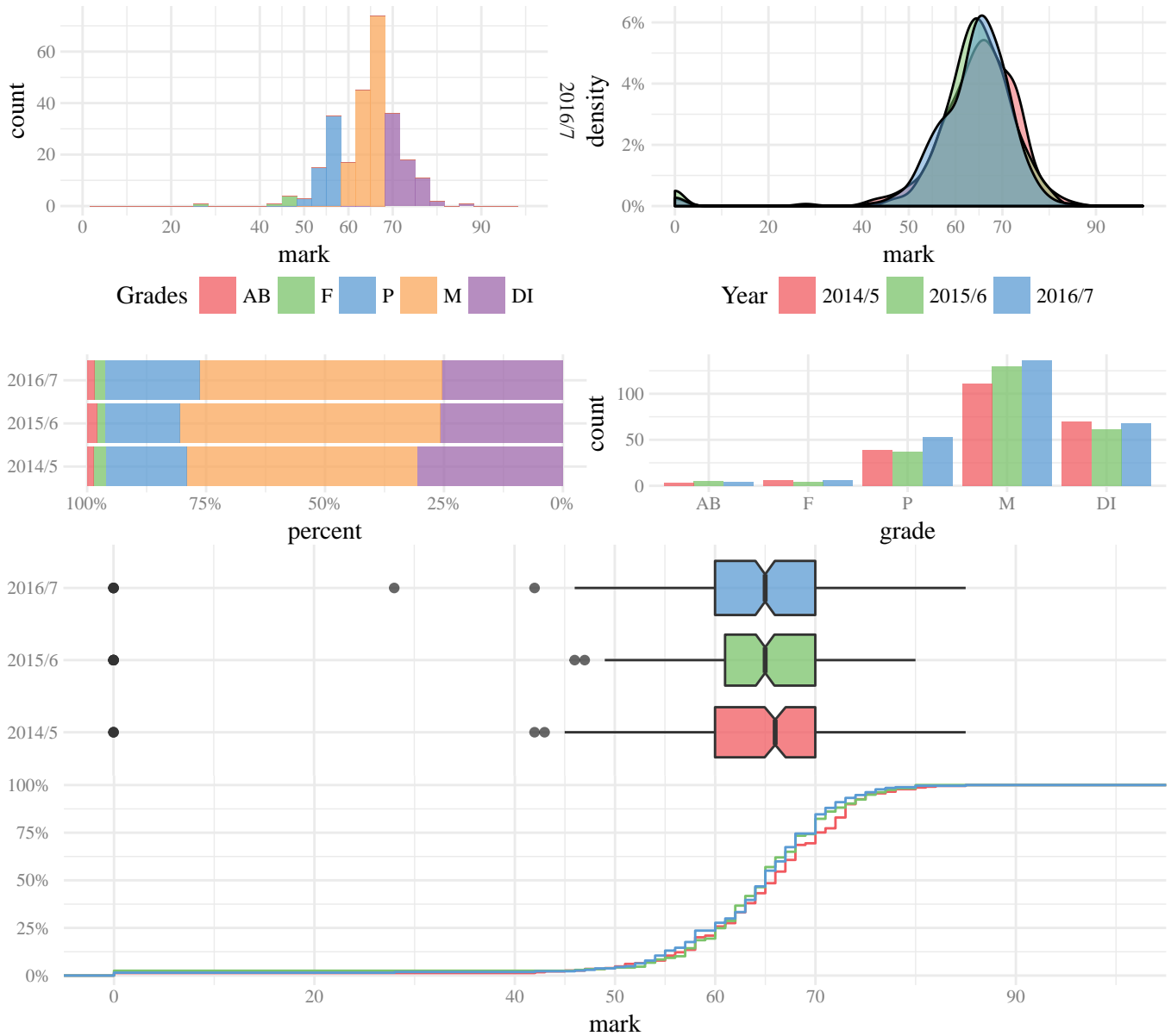
Year	n	mean	sd	min	q10	q25	median	q75	q90	q95	max
2016/7	14	64.20	4.79	55.00	58	61	65	67	69	70	72.00

Table 53: Mark summary

Year	n	AB	F	P	M	DI	%:	AB	F	P	M	DI
2016/7	14	0	0	2	11	1		0.0	0.0	14.3	78.6	7.1

Table 54: Grade summary (count and percentage)

MC499: Dissertation: Media and Communications



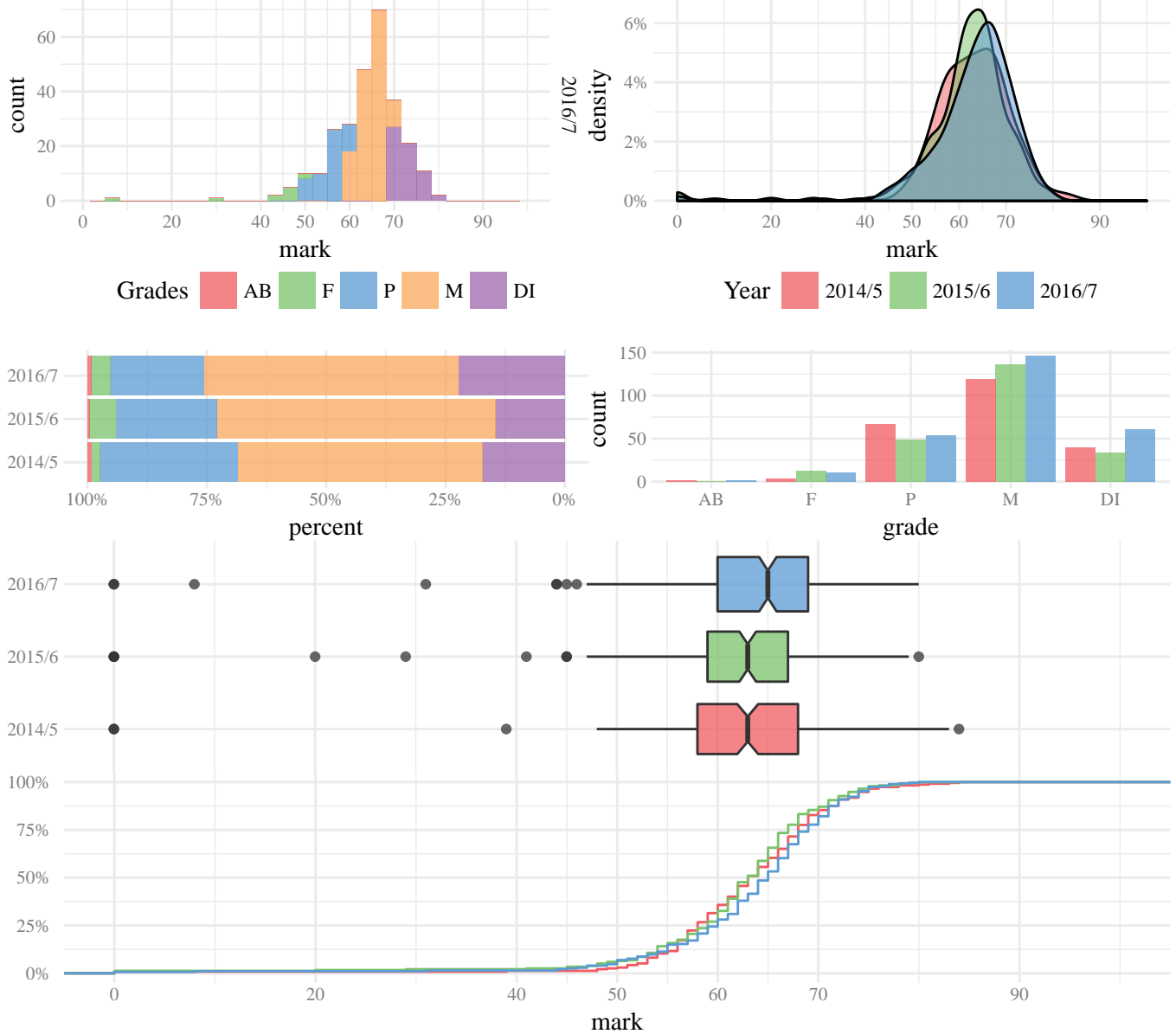
Year	n	mean	sd	min	q10	q25	median	q75	q90	q95	max
2014/5	229	64.50	10.43	0.00	55	60	66	70	73	75	85.00
2015/6	237	63.40	12.03	0.00	56	61	65	70	73	75	80.00
2016/7	267	63.30	10.53	0.00	54	60	65	70	72	74	85.00

Table 55: Mark summary

Year	n	AB	F	P	M	DI	%:	AB	F	P	M	DI
2014/5	229	3	6	39	111	70		1.3	2.6	17.0	48.5	30.6
2015/6	237	5	4	37	130	61		2.1	1.7	15.6	54.9	25.7
2016/7	267	4	6	53	136	68		1.5	2.2	19.9	50.9	25.5

Table 56: Grade summary (count and percentage)

MC4M1: Methods of Research in Media & Communications (including Qualitative & ...



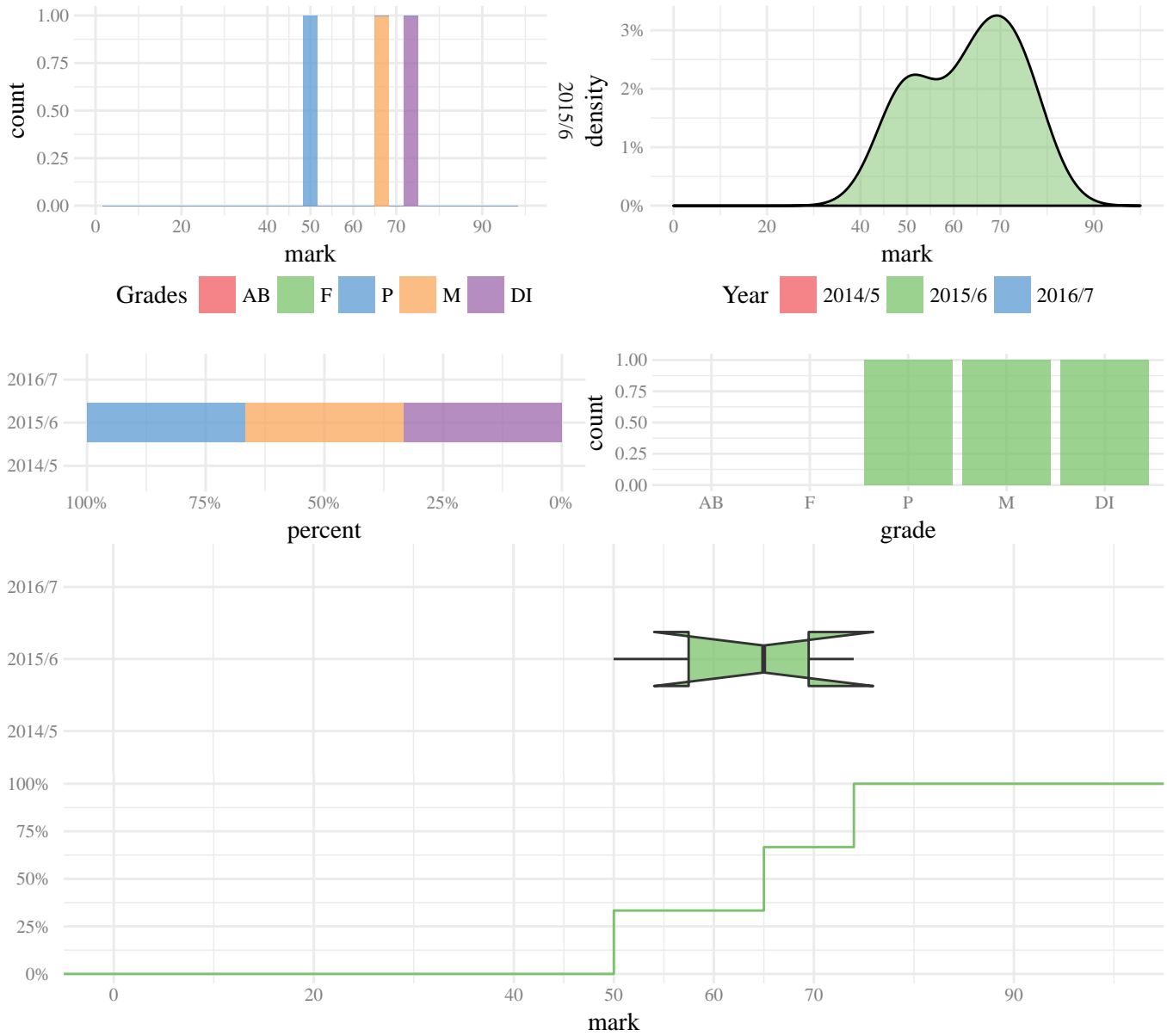
Year	n	mean	sd	min	q10	q25	median	q75	q90	q95	max
2014/5	232	62.90	9.13	0.00	54	58	63	68	72	74	84.00
2015/6	233	61.80	10.34	0.00	53	59	63	67	71	73	80.00
2016/7	274	63.30	9.68	0.00	54	60	65	69	72	74	80.00

Table 57: Mark summary

Year	n	AB	F	P	M	DI	%:	AB	F	P	M	DI
2014/5	232	2	4	67	119	40		0.9	1.7	28.9	51.3	17.2
2015/6	233	1	13	49	136	34		0.4	5.6	21.0	58.4	14.6
2016/7	274	2	11	54	146	61		0.7	4.0	19.7	53.3	22.3

Table 58: Grade summary (count and percentage)

MC4M1A: Methods of Research in Media & Communications (including Qualitative & ...



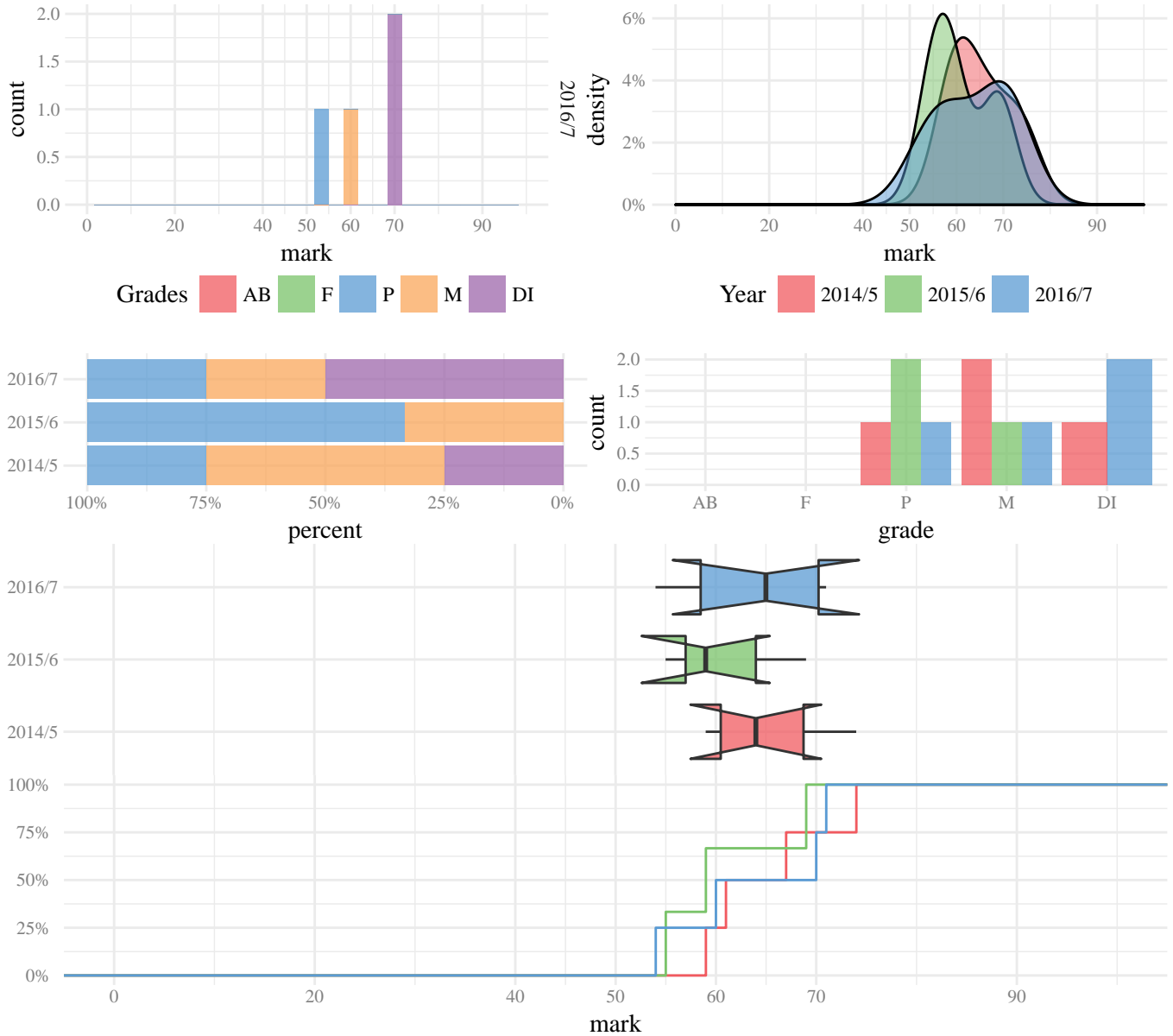
Year	n	mean	sd	min	q10	q25	median	q75	q90	q95	max
2015/6	3	63.00	12.12	50.00	53	57	65	69	72	73	74.00

Table 59: Mark summary

Year	n	AB	F	P	M	DI	%:	AB	F	P	M	DI
2015/6	3	0	0	1	1	1		0.0	0.0	33.3	33.3	33.3

Table 60: Grade summary (count and percentage)

MC4M2: Advanced Methods of Research in Media & Communications (including Quali...



Year	n	mean	sd	min	q10	q25	median	q75	q90	q95	max
2014/5	4	65.20	6.75	59.00	59	60	64	68	71	72	74.00
2015/6	3	61.00	7.21	55.00	55	57	59	64	67	68	69.00
2016/7	4	63.80	8.18	54.00	55	58	65	70	70	70	71.00

Table 61: Mark summary

Year	n	AB	F	P	M	DI	%:	AB	F	P	M	DI
2014/5	4	0	0	1	2	1		0.0	0.0	25.0	50.0	25.0
2015/6	3	0	0	2	1	0		0.0	0.0	66.7	33.3	0.0
2016/7	4	0	0	1	1	2		0.0	0.0	25.0	25.0	50.0

Table 62: Grade summary (count and percentage)