

# Printing on Mac OS

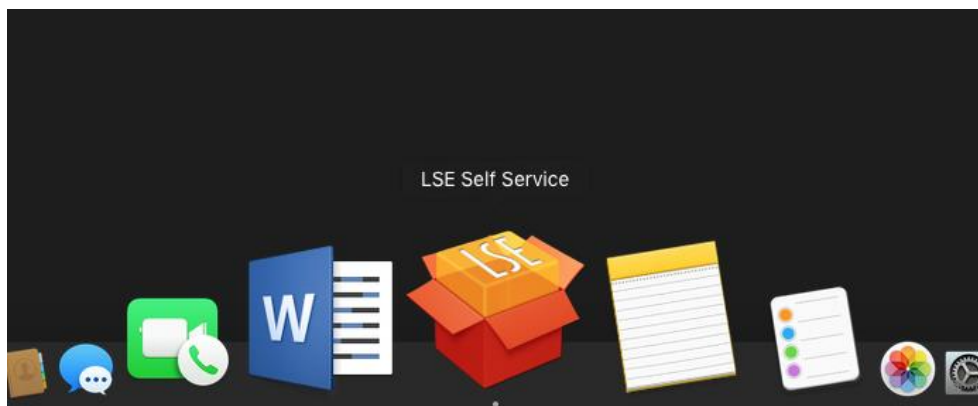
<http://www.lse.ac.uk/IMT>

**For LSE-owned Macs:** LSE Self Service should be installed in all LSE staff Macs (the default location is Macintosh HD/Applications/LSE Self Service.app). If the app is not there, staff should contact the IT Service Desk, who will provide a download link to Self Service.

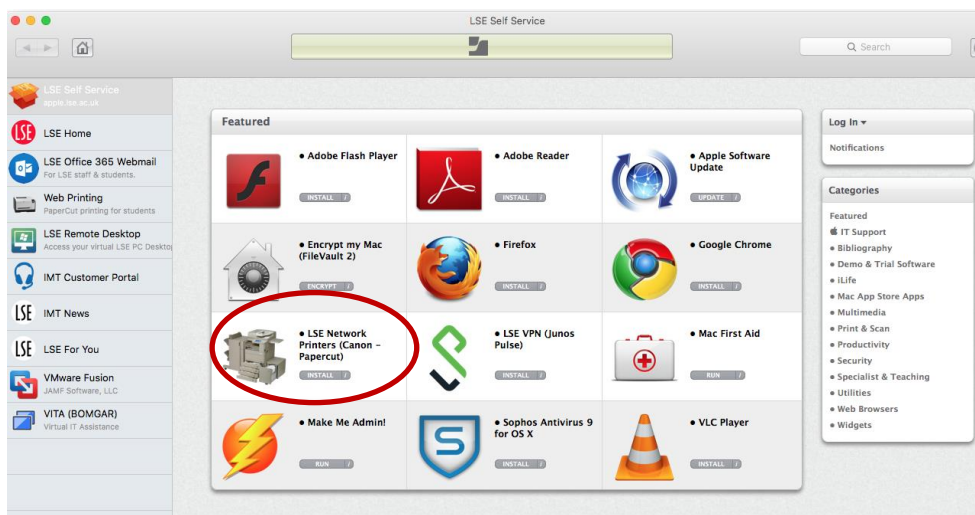
**For personally owned Macs:** Staff and students can use [Mobile Print](#) from their personal Mac or iOS devices.

The following guide provides instructions for setting up printing from a LSE-owned Mac device:

1. On the Dock, select **LSE Self Service**.



2. In the window that opens, select **LSE Network Printers (Canon – Papercut)**.



3. Select **Install**. The print drivers will be installed onto your device and allow you to print to the Canon MFDs.

