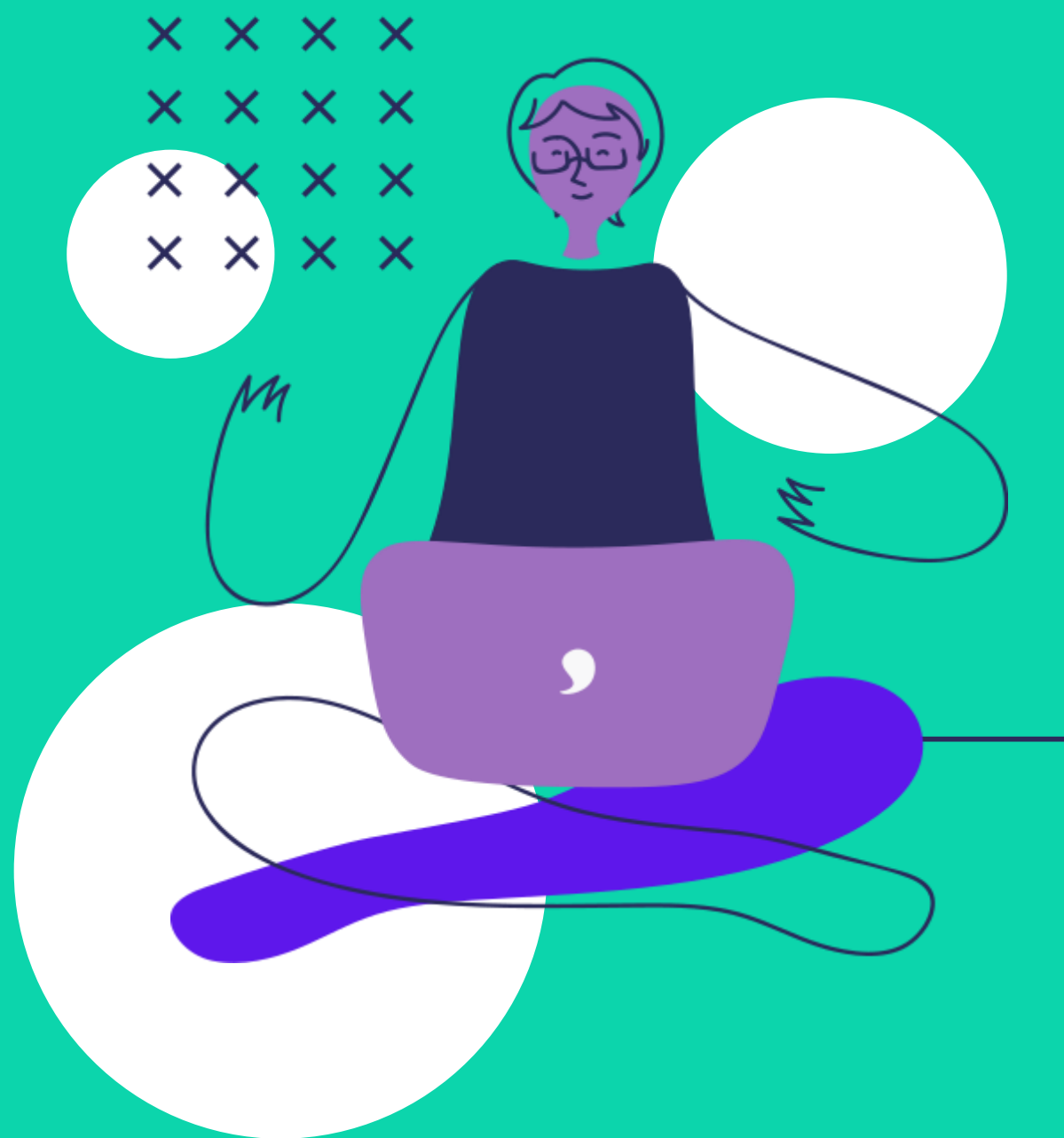


# The Future of Flexible & Agile Working

In conversation with Andrew Young  
24 August at 10:00 AM



Power

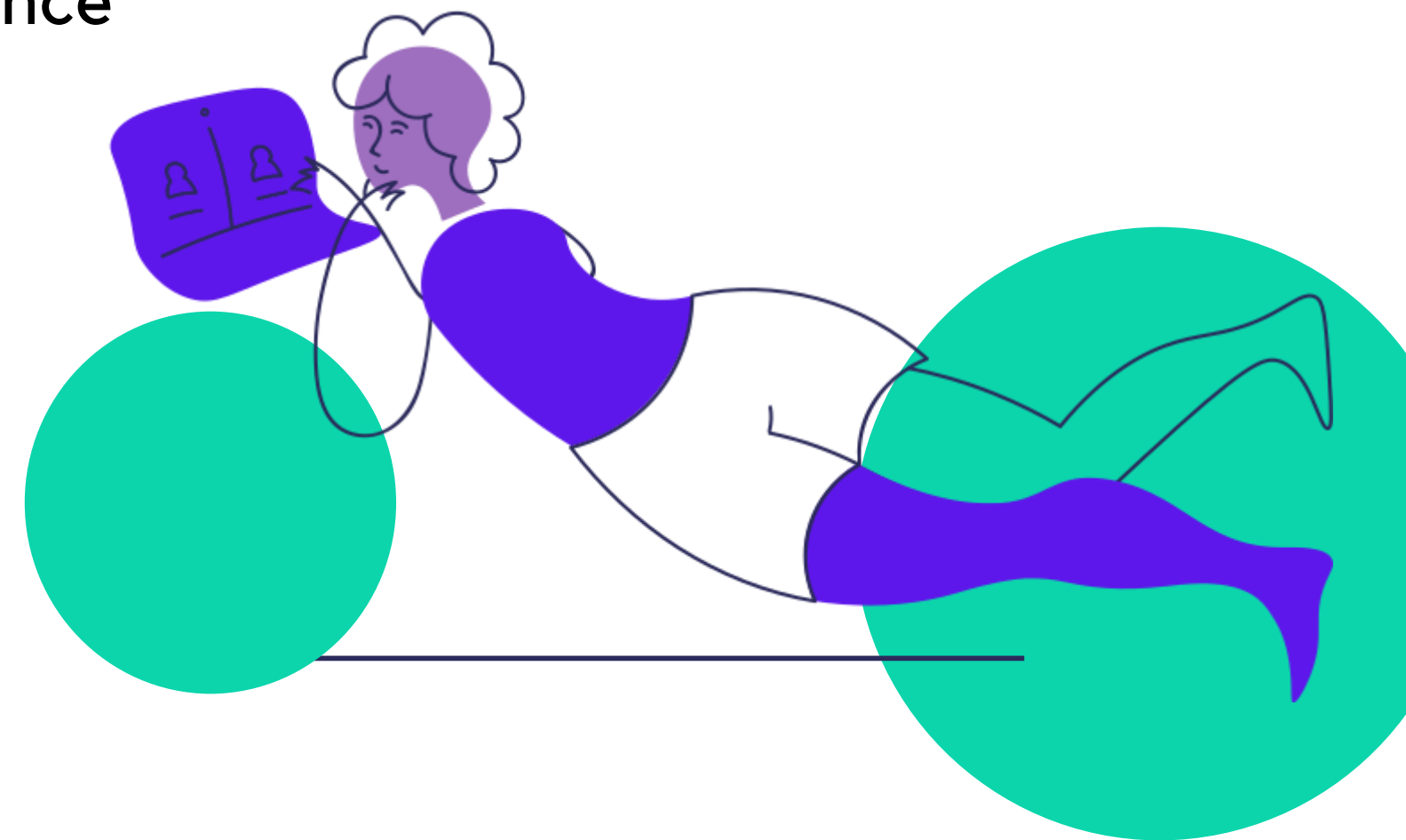


# Purpose of today's session

Gathering perspectives from Power members and staff from across the School on flexible and agile working arrangements they had before COVID and since lockdown to better inform future development of policies.

# Agenda

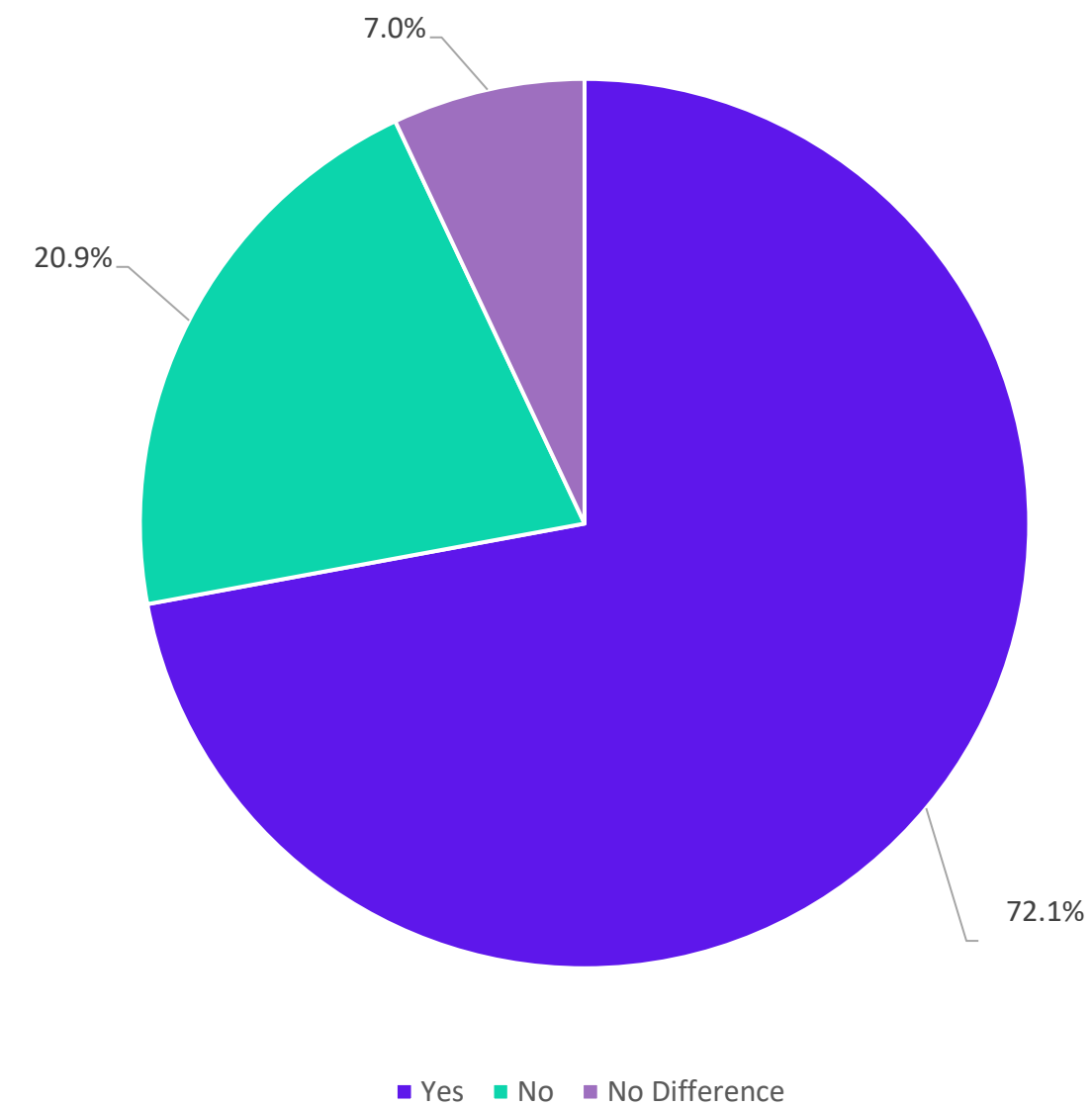
10:05-10:10	Welcome & intro from Power
10:10-10:15	Overview from Andrew Young
10:15-10:18	Factors to consider
10:18-10:30	Breakout rooms for discussion (randomly assigned)
10:30-10:50	Q&A – From breakout rooms and general audience
10:50-10:55	Closing Remarks from Andrew Young
10:55-11:00	Thank you and Next Steps



# Questionnaire Results



Has your overall work-life balance improved since you have been working from home?



# Flexible vs Agile

**Flexible working** — contractual change to the working hours or patterns. Examples include: annualised hours, compressed hours, home-working, job share, part-time working, staggered hours, term-time working, transition to retirement

[More info from HR](#)

**Agile working** — working standard contracted hours from a different location (can be home or a café or library, etc...)



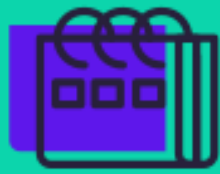


**Andrew Young**



# Factors to consider

## Wellbeing



Work-life balance  
Mental health  
Physical health  
Stress

## Financial



Travel costs  
Office space  
Equipment  
Salary

## Environmental



Printing  
Commute  
Office building

## Diversity



Parents & Carer's  
Disabilities  
Fairness  
Equity

## Productivity

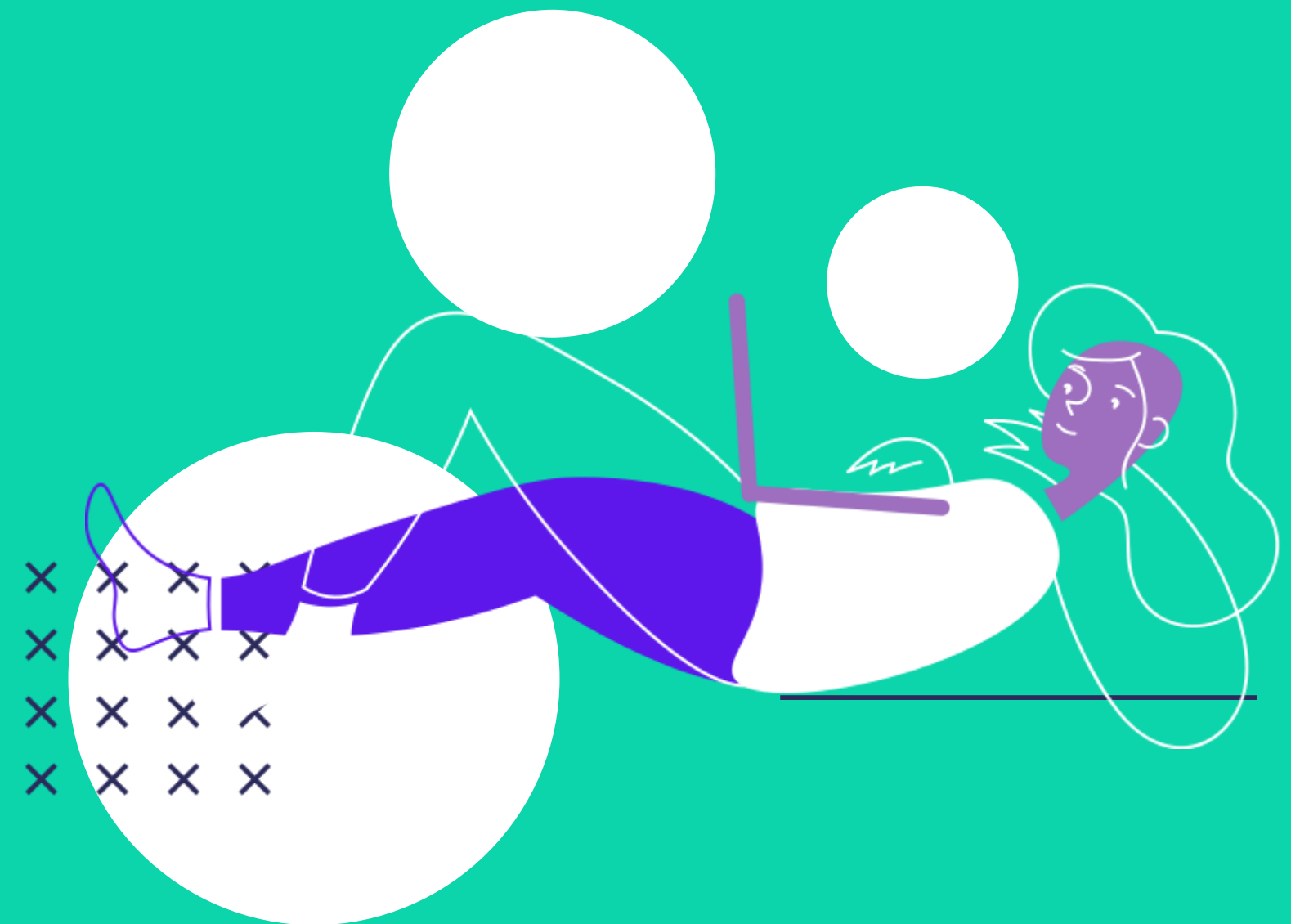


Work output  
Technology  
Infrastructure  
Student experience  
Service delivery

# Breakout room discussion

What questions do you have for Andrew?

Returning to the main room in 10 minutes







# Questions from your Breakout Rooms

We will rotate through each breakout room to get your question for Andrew.

If your question wasn't chosen, feel free to put it in the chat box for the open Q&A portion.





**Thank you!**

**LSE**  
**Power**