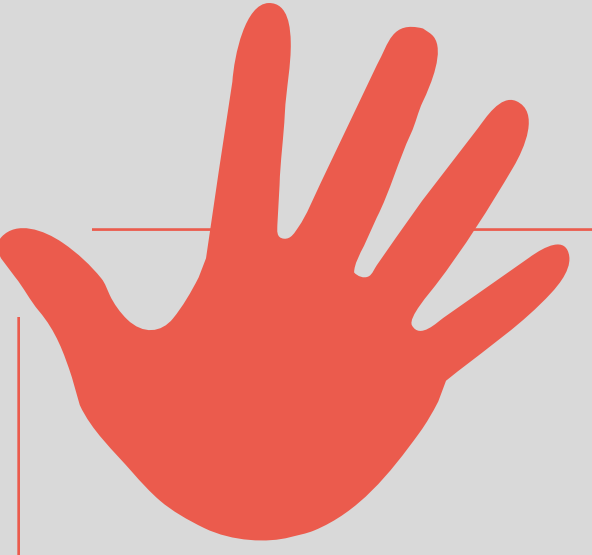


Safe Contacts Scheme

LSE Safe Contacts are trained members of LSE staff who can offer a confidential “signposting” service for staff and students experiencing some form of bullying, harassment or sexual violence.

We have **39** Safe Contacts, managed by EDI, from over **25** departments and divisions that can support you.

Get in touch with a Safe Contact directly via their contact details on lse.ac.uk/safecontacts.



1 in 6 new students in the UK suffered some form of sexual harassment during their first week in higher education

Source: nus.org.uk



3 in 4 people in England, Scotland and Wales have experienced sexual harassment at work, the majority of which are women

Source: equalityhumanrights.com



6% of students in the UK reported their experience of sexual violence to the university

Source: Revolt Report

YOU CAN CONTACT SAFE CONTACTS AND WE ALSO HAVE LINKS ON OUR WEB PAGES TO EXTERNAL SOURCES OF SUPPORT

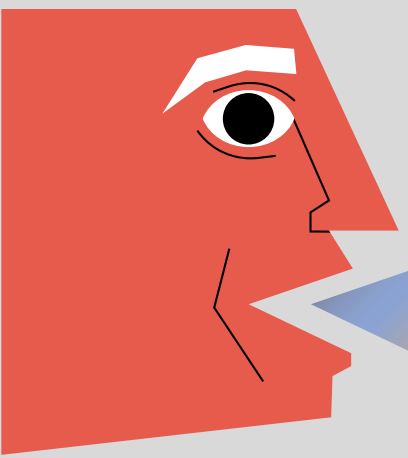


19% of disabled adults are victims of crime in England

Source: equalityhumanrights.com



Source: stonewall.org.uk



1 in 4 BME LGBT students at British universities have experienced negative comments or conduct from a member of staff

Source: stonewall.org.uk

APPROXIMATELY 20% OF SAFE CONTACTS IDENTIFY AS LGBTQ+

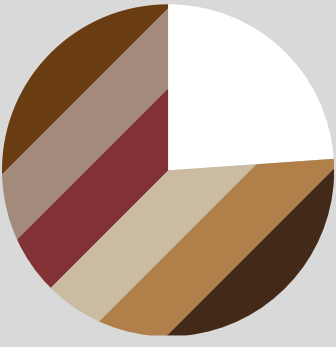
REPORT ANY BULLYING AND HARASSMENT TO SAFE CONTACTS AND ON LSE'S REPORT IT STOP IT WEB PAGE

1 in 3 Muslim students in further and higher education in the UK have experienced abuse or crime at university



LSE'S FAITH CENTRE IS FOR PEOPLE OF ALL FAITHS AND BELIEFS

Source: nusconnect.org.uk



24% of BME students have experienced racial harassment on campus in England, Scotland and Wales



2 in 3 students do not report racial harassment to their university

Source: equalityhumanrights.com

APPROXIMATELY 20% OF SAFE CONTACTS IDENTIFY AS BLACK, ASIAN AND MINORITY ETHNIC



1 in 4 UK university staff experience racist name-calling, insults and jokes

Half of staff in publicly funded universities in England, Scotland and Wales are ignored or excluded because of their race



Source: equalityhumanrights.com

Find out more about **LSE Safe Contacts** on lse.ac.uk/safecontacts