

Issue 10

May 2026



LONDON SCHOOL OF ECONOMICS AND POLITICAL SCIENCE

The FLGH Newsletter

Dear Colleagues,

This newsletter provides an update on the School's major campus redevelopment project; the Firoz Lalji Global Hub Redevelopment Project at 35 Lincoln's Inn Fields.

Inside this issue:

Current Progress	1
Look ahead and noisy works	2
Noise and dust control in SAL	3

Estates Division Firoz Lalji Global Hub Redevelopment Newsletter

Firoz Lalji Global Hub Redevelopment at 35 Lincoln Inn Fields

This newsletter sets out the current progress, works planned on site until the end of 2026 and the impact it may have on staff and students occupying the Sir Arthur Lewis Building (SAL).

Current Progress

McLaren Construction completed site set up and commenced the Main Works package in January 2026.

The following works progressed in the last period:

- Repairs to existing structure
- Structural and enabling works for new structural connections
- Basement waterproofing
- Timber frame erection commenced
- Façade and envelope works i.e. windows enlargement, new entrance was cut on Portugal Street
- Design packages for lifts, MEP, feature staircase, windows, roof plant.

Site working hours: Monday to Friday: 8am – 6pm and Saturday: 8am – 1pm

Deliveries continue to be managed via a fully marshalled pitlane on Lincoln's Inn Fields. Tower crane operations will continue as previously established.



Yours sincerely
Cheryl Smitham
Assistant Director of Capital Development

LSE Estates Division
Capital Development



Look Ahead

The following activities are due to take in Spring and Summer 2026:

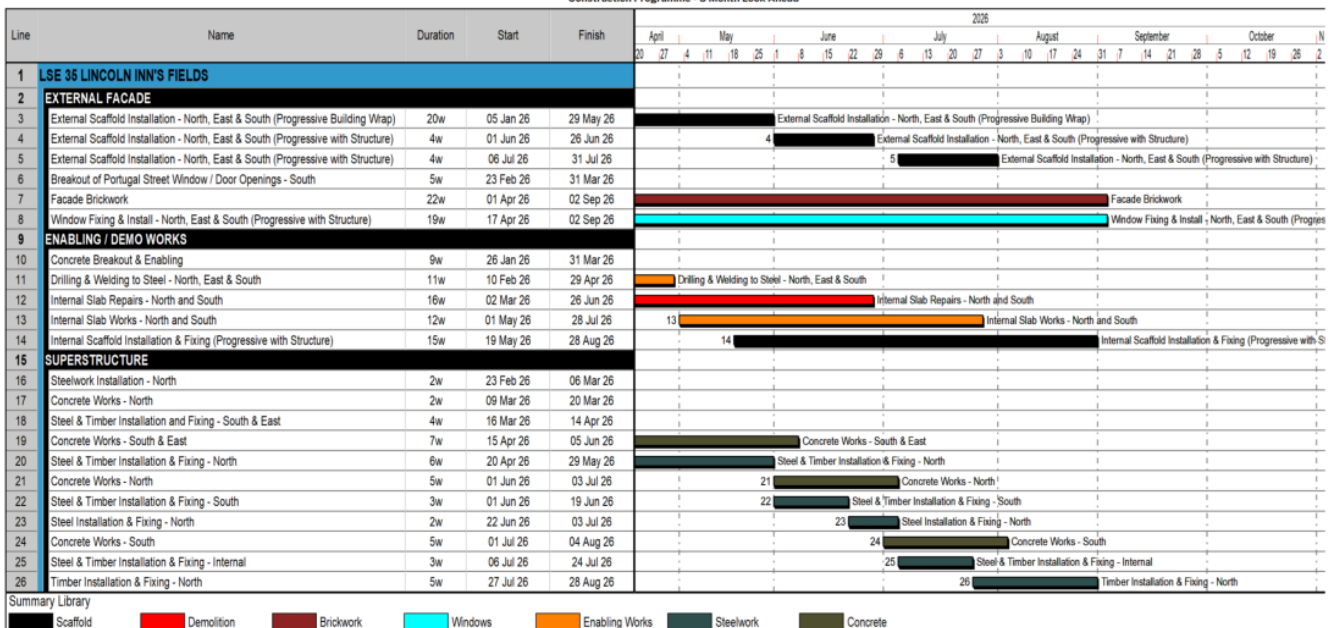
- Monarflex with MCL and LSE branding ongoing to contain dust, reduce noise and minimise light pollution to our neighbours.
- Steel and concrete encasements, timber columns, beams and slabs installation and wall panelling.
- Further works to Portugal Street façade openings
- Riser flooring installation
- Atrium slab extension
- Structural repairs to continue
- Brickwork package including façade restorations.

Noisy Works—3 months look ahead

The programme below outlines noisy works activities on site up until August 2026.

LSE 35 LINCOLN INN'S FIELD

The London School of Economics & Political Science
Construction Programme - 3 Month Look Ahead



What is noise and how is it measured?

Sound is what we hear—noise is unwanted sound. The difference between sound and noise depends upon the listener and circumstances. The loudest of sound is measured in units called decibels, abbreviated “dB”. The decibel is named after Alexander Graham Bell, the pioneer of the telephone.

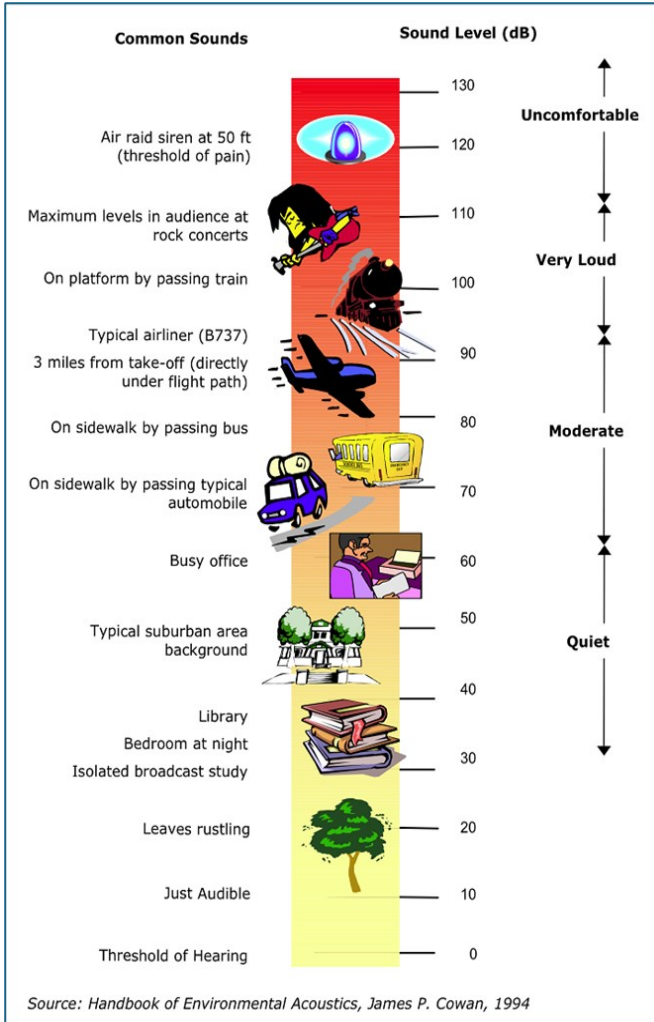


Image 2: Decibel Scale

A decibel unit expresses the relative intensity of sounds on a scale from zero, for the average least perceptible sound, to about 100 dB, which is near the level most people find uncomfortably loud.

Normal speech is around 50 to 60 dB. Distance plays an important role in the perceived sound level, decreasing by approximately 6 dB every time the distance from the source is doubled. Sound levels inside a building will be approximately 10 dB less than those outside, even when a window is open.

The adjacent chart demonstrates the sound scale in decibels for common noises.

What governs noise levels?

Westminster City Council (WCC) is the local authority covering the majority of the LSE campus. WCC operates a Code of Construction Practice (CoCP) to monitor, control, manage and enforce its statutory duties for major development sites and this will include the Firoz Lalji Global Hub Redevelopment project. The CoCP sets out standards and procedures for managing the environmental impacts during the construction of major projects. It covers the environmental, public health and safety aspects of the project that may effect the interests of local residents, businesses, the general public, and the surroundings of the proposed construction site.

The CoCP covers a number of aspects of construction including hours of operation, noise, dust, and traffic movements setting out the legislative framework covering all these issues under which WCC operate. WCC will impose a CoCP on the LSE as a condition of the planning process, or by prior agreement.

Noise and Dust Control in SAL Building

All Activities will follow strict control measures to comply with WCC requirements.

WCC code of construction practice sets out parameters to when noisy works can be carried out which are;

- between 8am and 6pm Monday to Friday;
- between 8am and 1pm on Saturday; and
- not at all on Sundays, bank holidays and public holidays.

These parameters state that the general level of site noise shall be no more than 70 dB(A) outside the nearest University building or private residence at the window of the occupied room closest to the site boundary, as recommended in the Wilson Report on Noise, 1963.

In addition to WCC noise control requirements, the contractor will operate quiet hours to further reduce disruption:

- between 10am and 12:00
- Between 2pm and 4pm