

Issue 9

November 2025



LONDON SCHOOL OF ECONOMICS AND POLITICAL SCIENCE

The FLGH Newsletter

Dear Colleagues,

This newsletter provides an update on the School's major campus redevelopment project; the Firoz Lalji Global Hub Redevelopment Project at 35 Lincoln's Inn Fields.

Inside this issue:

Current Progress	1
Temporary Works	2
Noise and dust control in SAL	3

Estates Division

Firoz Lalji Global Hub Redevelopment Newsletter

Firoz Lalji Global Hub Redevelopment at 35 Lincoln's Inn Fields

This newsletter sets out the current progress, works planned on site until the end of 2025 and the impact it may have on staff and students occupying the Sir Arthur Lewis Building (SAL).

Current Progress

Deconstruct UK completed demolition and early structural works on 19 September 2025. McLaren Construction, the main works contractor took possession of the site on 22 September 2025 and commenced site set up and early design packages while a small team from Deconstruct remains on site to carry out snags and outstanding works.

Site working hours: Monday to Friday: 8:00am – 6:00pm and Saturday: 8:00am – 1:00pm

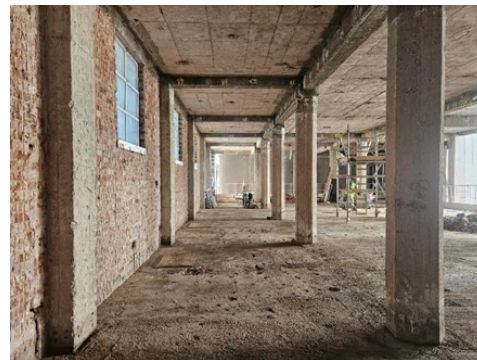
Deliveries will be managed via a fully marshalled pitlane on Lincoln's Inn Fields.

Tower crane operations will continue as previously established.

Look Ahead

The following activities are due to take place before the end of 2025:

- Site set up including installation of contractor accommodation cabins on Lincoln's Inn Field Side.
- Hoarding adaptations, pitlane establishment (see pavement closure details on p.2)
- Scaffolding installation
- Basement waterproofing
- Temporary plumbing and power installation



Yours sincerely
Cheryl Smitham
Assistant Director of Capital Development



Estates Division
Capital Development

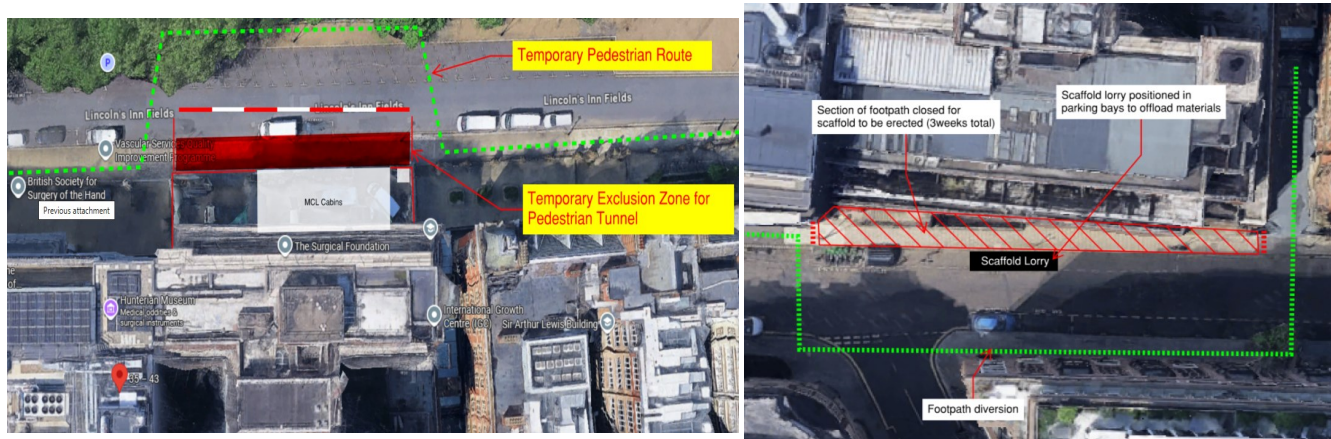
Temporary Pavement Closures

There will be temporary pavement closures directly in front of the Firoz Lalji Global Hub building to enable modification of the hoarding and erection of the scaffolding and construction of a pedestrian tunnel/walkway which will allow pedestrians to pass freely across the front of the project without being interrupted as we receive deliveries, reducing our impact on the public and our neighbours.

Lincoln's Inn Field side pavement closure will be in place between 17 November and 5 December 2025

Portugal Street side pavement closure will be in place from 1 December 2025 for up to three weeks.

To minimise disruption, the contractor will stagger the works to ensure at least one footpath is open at a time.

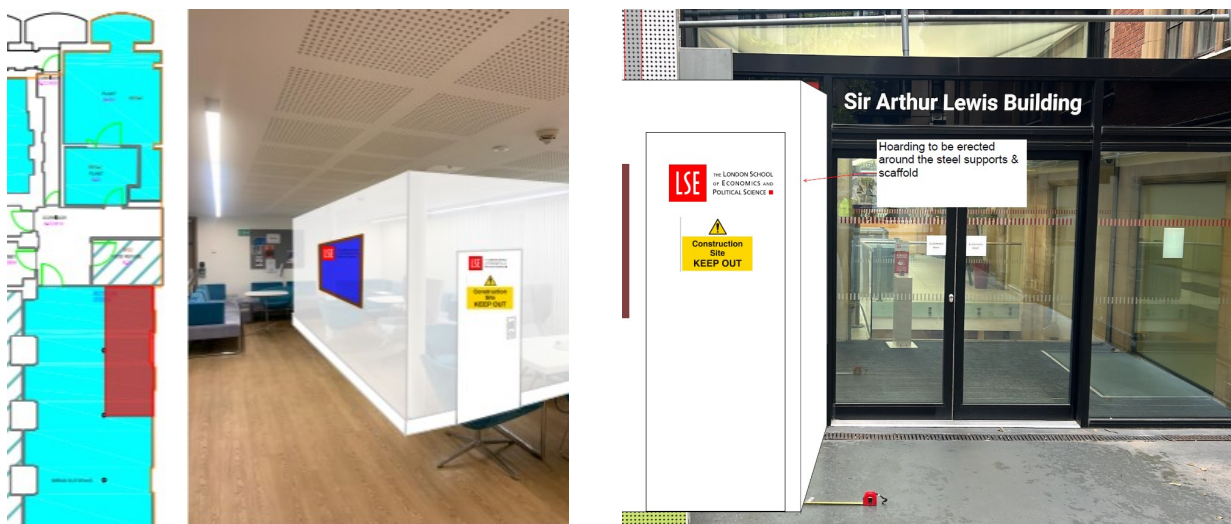


Scaffolding structural support works in SAL

In order to provide structural support for the scaffolding, McLaren need to undertake temporary structural support works within SAL.

Temporary props and hoarding will be installed in Kinta Alley and to the left hand side of the SAL Portugal Street entrance in the first week of December 2025 and will remain in place until summer 2027.

Kinta Alley will be closed between 1 and 2 December 2025, the works will not affect access to SAL via Portugal Street. The scaffold will be designed to allow unhindered access to the building for staff and students and allow the existing bin area to be accessed as normal. There maybe some disruption whilst the scaffold is erected, but the contractor will limit works to the early mornings to avoid busy times.



What is noise and how is it measured?

Sound is what we hear—noise is unwanted sound. The difference between sound and noise depends upon the listener and circumstances. The loudest of sound is measured in units called decibels, abbreviated “dB”. The decibel is named after Alexander Graham Bell, the pioneer of the telephone.

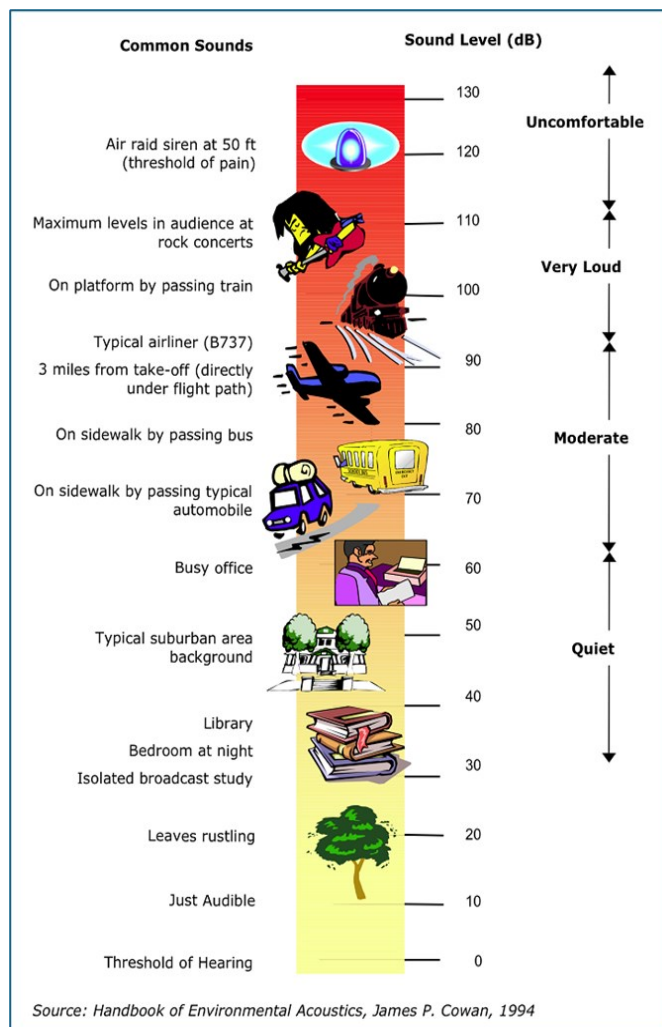


Image 2: Decibel Scale

A decibel unit expresses the relative intensity of sounds on a scale from zero, for the average least perceptible sound, to about 100 dB, which is near the level most people find uncomfortably loud.

Normal speech is around 50 to 60 dB. Distance plays an important role in the perceived sound level, decreasing by approximately 6 dB every time the distance from the source is doubled. Sound levels inside a building will be approximately 10 dB less than those outside, even when a window is open.

The adjacent chart demonstrates the sound scale in decibels for common noises.

What governs noise levels?

Westminster City Council (WCC) is the local authority covering the majority of the LSE campus. WCC operates a Code of Construction Practice (CoCP) to monitor, control, manage and enforce its statutory duties for major development sites and this will include the Firoz Lalji Global Hub Redevelopment project. The CoCP sets out standards and procedures for managing the environmental impacts during the construction of major projects. It covers the environmental, public health and safety aspects of the project that may effect the interests of local residents, businesses, the general public, and the surroundings of the proposed construction site.

The CoCP covers a number of aspects of construction including hours of operation, noise, dust, and traffic movements setting out the legislative framework covering all these issues under which WCC operate. WCC will impose a CoCP on the LSE as a condition of the planning process, or by prior agreement.

Noise and Dust Control in SAL Building

All Activities will follow strict control measures to comply with WCC requirements.

WCC code of construction practice sets out parameters to when noisy works can be carried out which are;

- between 08:00 and 18:00 Monday to Friday;
- between 08:00 and 13:00 on Saturday; and
- not at all on Sundays, bank holidays and public holidays.

These parameters state that the general level of site noise shall be no more than 70 dB(A) outside the nearest University building or private residence at the window of the occupied room closest to the site boundary, as recommended in the Wilson Report on Noise, 1963.

In addition to WCC noise control requirements, the contractor will operate quiet hours to further reduce disruption:

- between 10:00 and 12:00
- Between 14:00 and 16:00