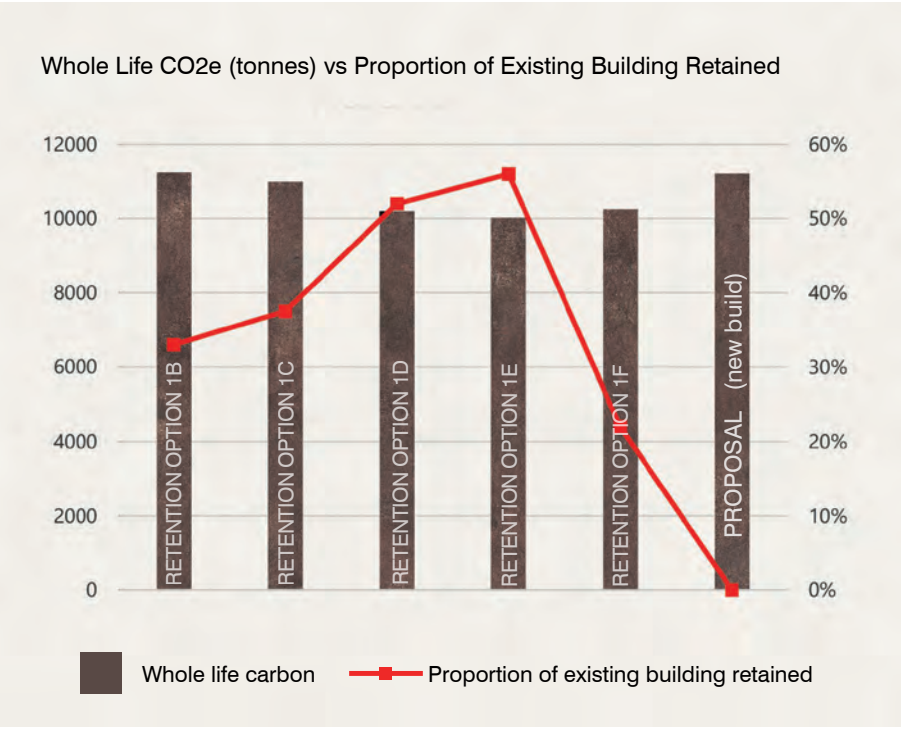


A Considered Approach

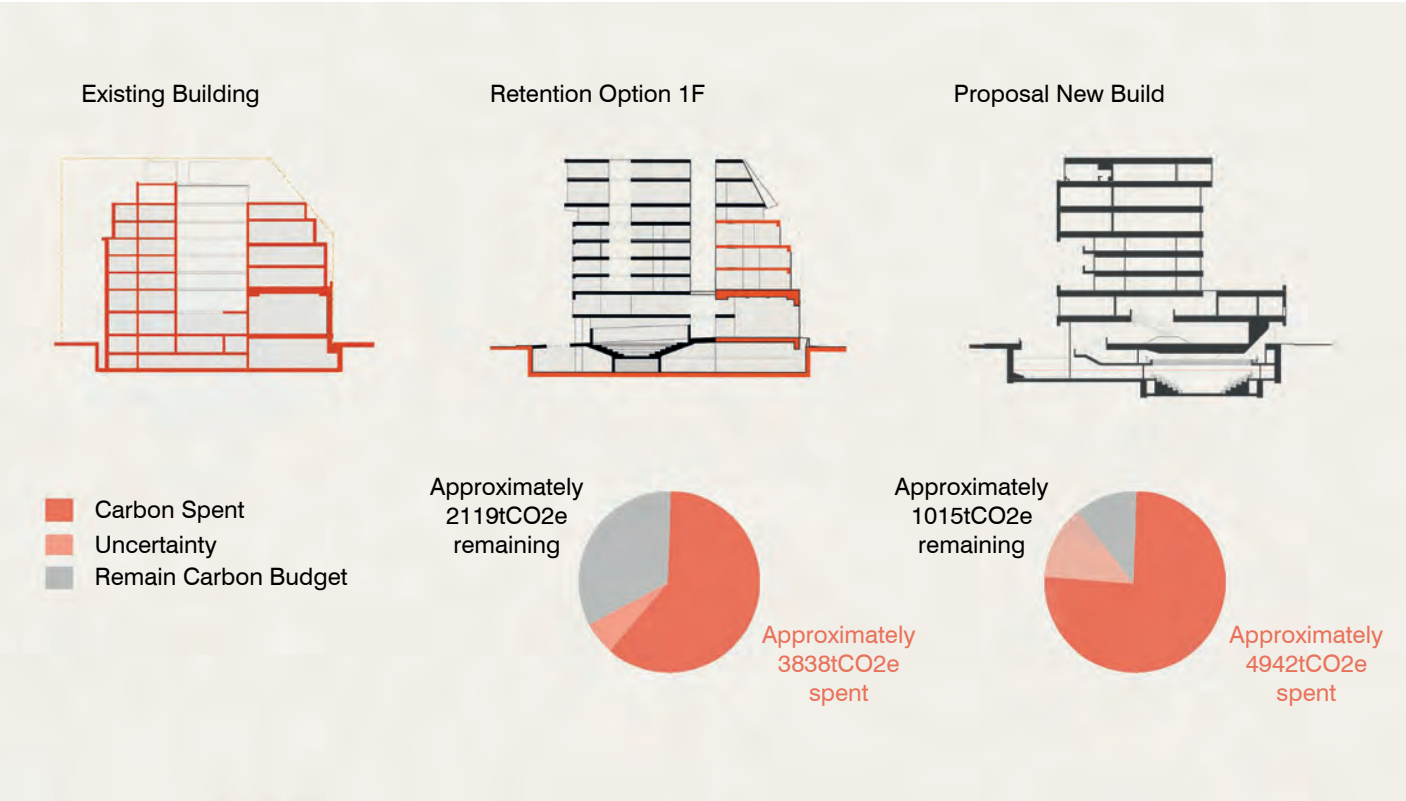
We deeply believe that the new build scheme is what is right for the Lajli Hub, right for the LSE, and right for Lincoln's Inn Fields. We did not come to this decision easily. We understand the heightened sensitivity to both planning issues and the saving of embodied carbon. We decided that we would undertake the study of a retention scheme with the same passion and conviction with which we pursued a new build scheme. Each scheme informed the other.

The adjacent sections are a synopsis of the retention scheme. They show the existing structure, the modifications to that structure and the new build along with an approximation of embodied carbon. It was determined that in order to meet the programme goals, only the section facing Portugal Street could be kept. The façade on LIF would need to be completely new. The rear façade was seen as more successful given the robust nature of its form, massing and materiality.



Ultimately, the study showed that the retention option will not have the qualities to satisfy the aspirations of the Vision Statement and success factors in the briefing document. If an unsatisfactory retention scheme necessitates either future renovation or eventually demolition then the issue of embodied carbon is moot. Most crucially, the difference in embodied carbon diminishes when one examines the Whole Life CO2.

Our final conclusion is that the new build enhances Lincoln's Inn Fields and extends the future for LSE and the Lajli Hub.



Carbon analysis of Retention vs New Build Schemes



Lincoln's Inn Fields Elevation Analysis



Site Plan, 1:1000



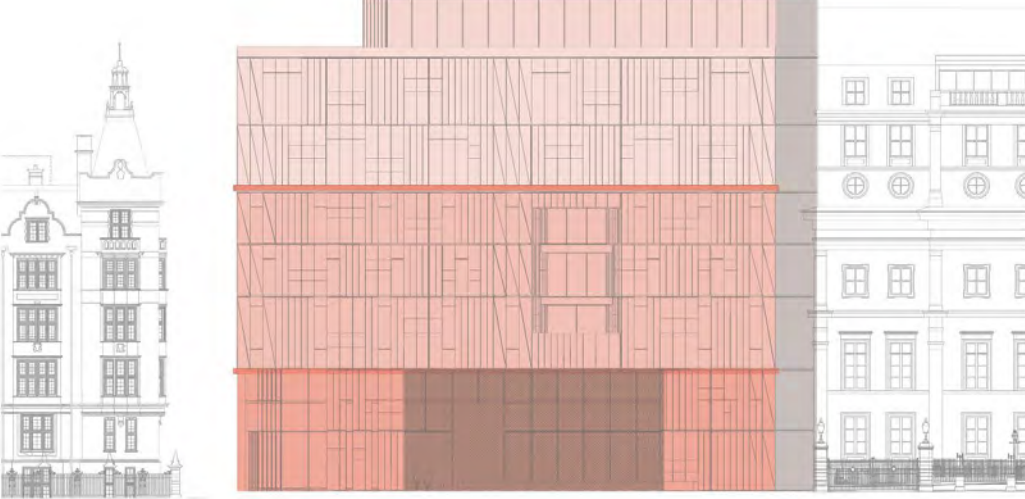
Site Aerial Looking South Towards the Thames

Palazzos on the Square

Centrally located on the southern edge of Lincoln's Inn Fields, the site is embedded among a series of palazzo scale buildings with strong dignified facades. The Hub's facade is at its most formal on this edge, relating in tonality and scale to its neighbours, yet with a syncopation of openings, colour and texture that set it apart. In response to the adjacent and existing buildings, the facade utilizes a tripartite system of base middle and top. The horizontal band of terracotta references neighbouring cornice lines. The entry is demarcated three dimensionally and by a shift in scale.



Facade Analysis of Existing Building



Facade Analysis of Proposed Building



Lincoln's Inn Fields Elevation - 1:500