

The Living Room

We imagine the interior of LSE's Firoz Lalji Global Hub as a series of living rooms.

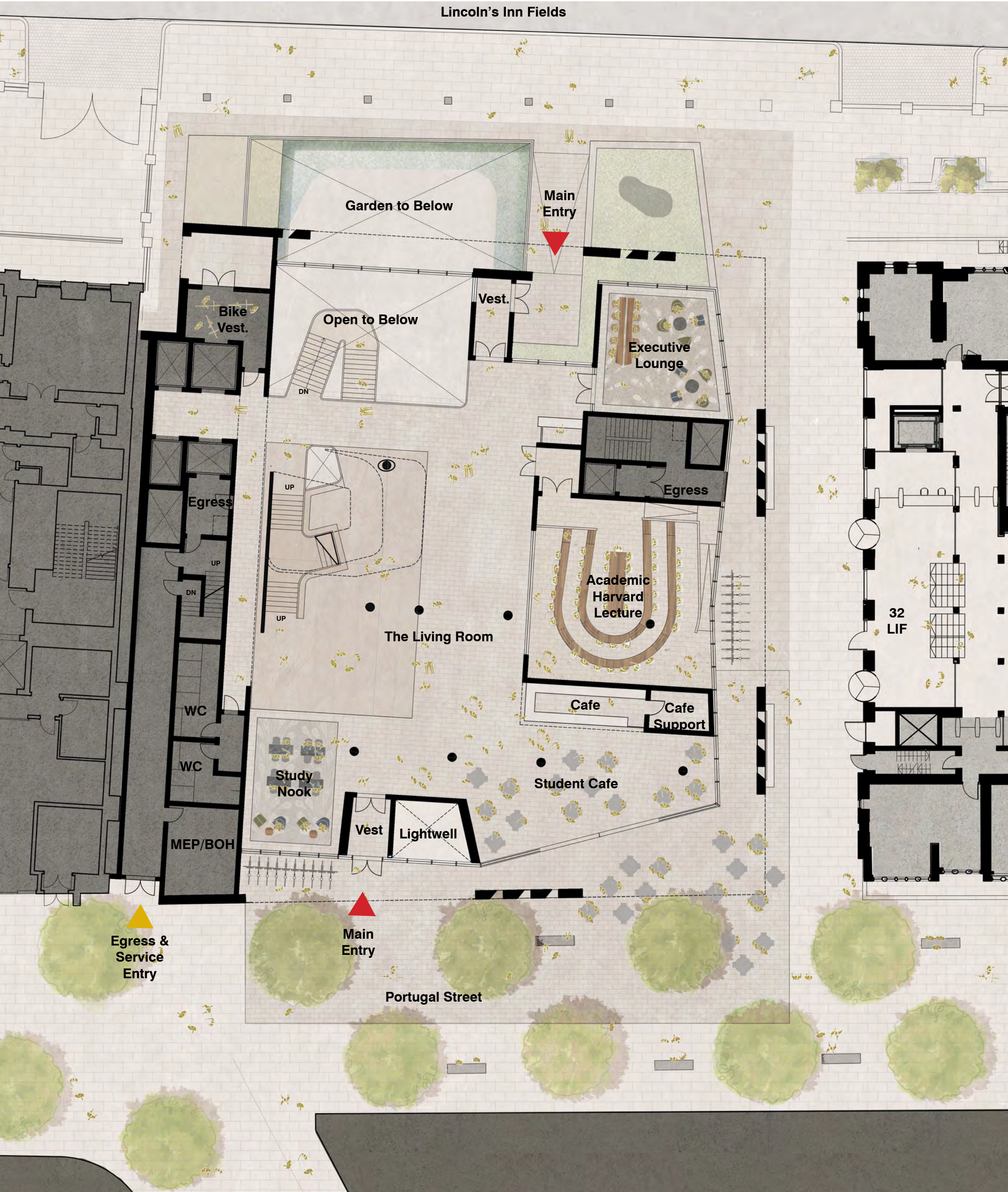
From Lincoln's Inn Fields, a formal entrance over a bridge between two gardens welcomes visitors. Through the doors is a grand reception area filled with warm materials, textures, and natural light. This is the most public of all floors, with clear pathways and views through the building. We propose a generous use of textiles on the walls, natural wood, commodious seating and art. It is the living room open to the world.

From this reception area, visitors are offered a range of spaces to enter. On the northeast corner, adjacent to the LIF entrance, an executive lounge welcomes

visitors. Along the east wall, across from 32 LIF, is a Harvard classroom for student use and visitor orientation. Acoustical glass walls define the space, which can be shielded by colourful fabric curtains for privacy.

Toward Portugal Street is a less formal lounge filled with natural light. A large sliding glass door on the corner allows the space to circulate fresh air during the day. Tables and chairs from the corner café continue onto the sidewalk, creating an inviting entry for students. This is the living room for the community.

Students and visitors will be able to seamlessly pass through the building with linked yet different approaches of welcome.

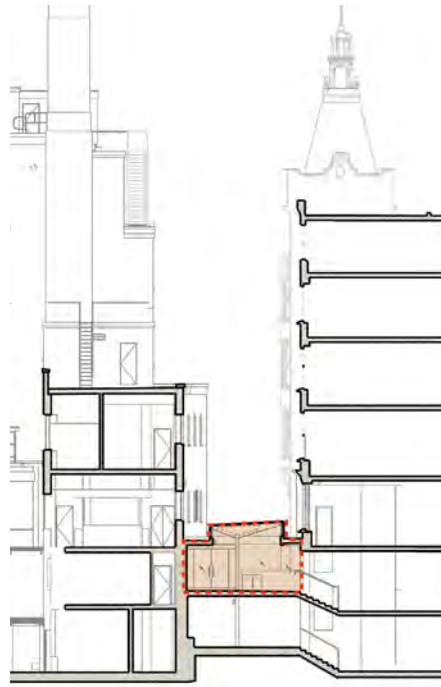


Ground floor plan, 1:200

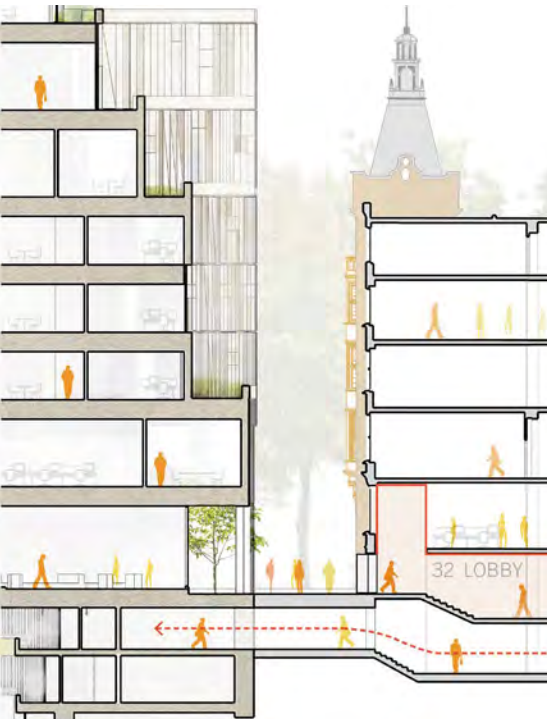
Linking the Public Realm

The building's massing sensitively addresses the conditions of its three exposed facades, and encourages pedestrian movement around and through the building. To the east, we propose opening the tight gap between 35 and 32LIF. By eliminating the existing glass enclosure and bringing the entry sequence into the body of 32LIF, a clear, unobstructed and visible connection is made from LIF to Portugal Street. This newly opened space not only creates an opportunity for more humane circulation to Portugal Street, but a more inviting entry to 32LIF. For each floor above the ground level, the tiers of the façade set back to open this sliver of space more to the sky.

The Portugal Street façade breaks down in scale, responding to the Right to Light and the residences of Lincoln Square opposite. The upper tiers create generous platforms of planting that not only allow the users of the building to step outdoors for fresh air, but provide a less formal face to the student life on Portugal Street. In this way, the lush plantings of Lincoln's Inn Fields are extended to the South Façade, enhancing Portugal Street's appeal. On the ground level, tables and chairs from the student café spill out from inside the building



Existing 32 entry condition



Proposed 32 LIF entry condition



First floor perspective looking north towards the Firoz Lalji Institute for Africa



Ground floor perspective looking north towards the main entry and communicating stair