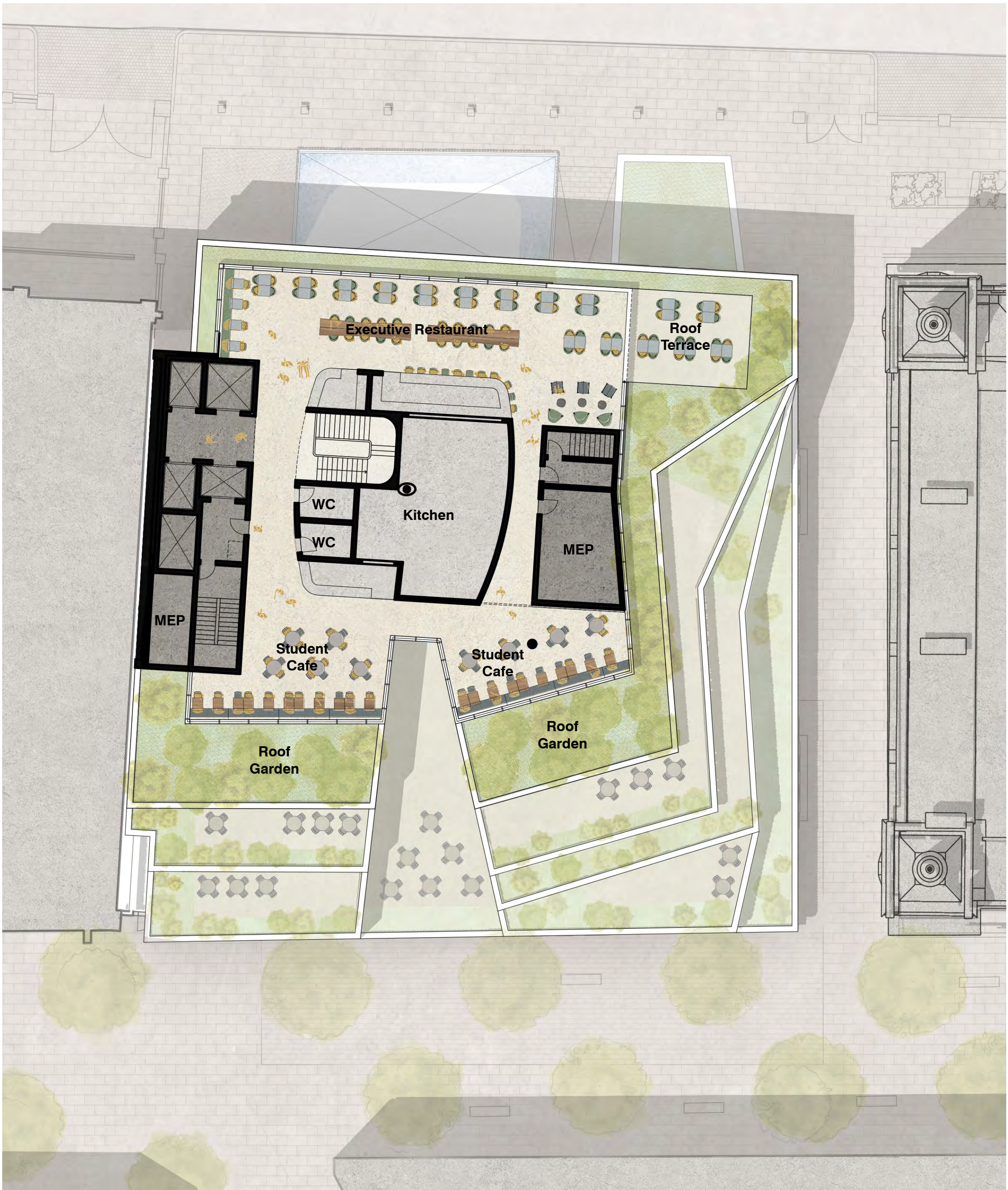
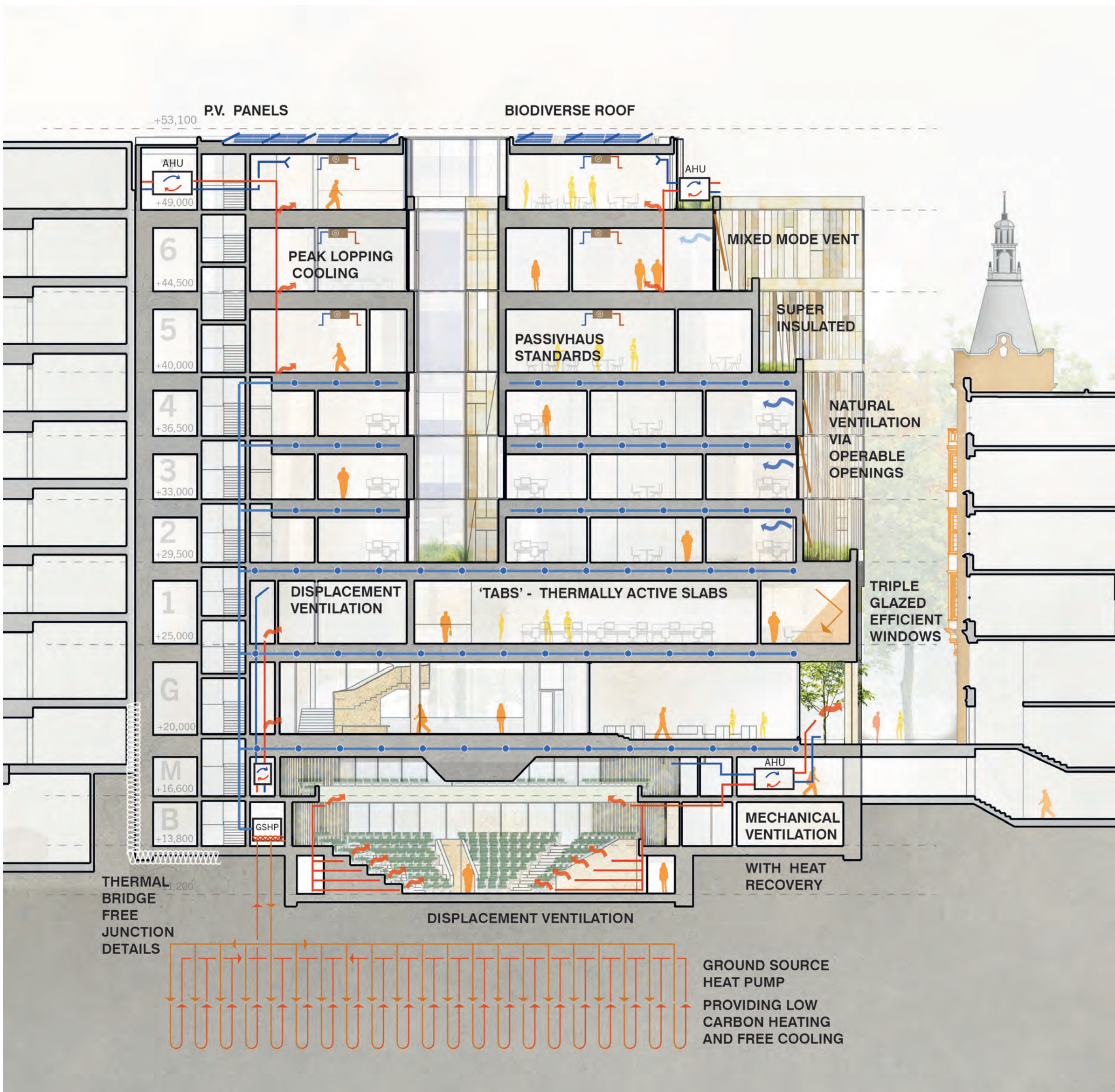




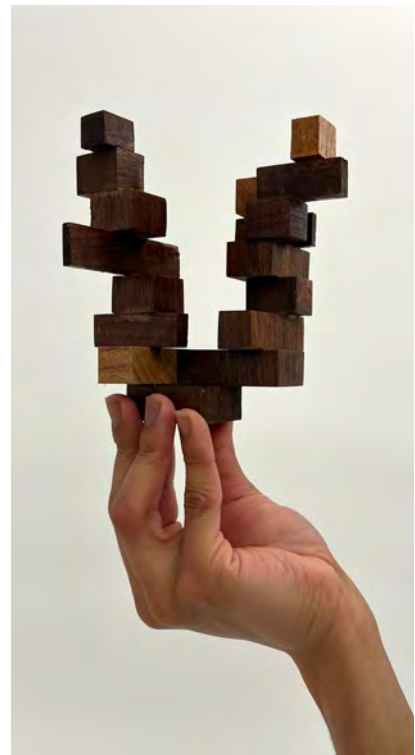
7th Floor Restaurant Perspective



7th Floor, Restaurant & Student Cafe, 1:200

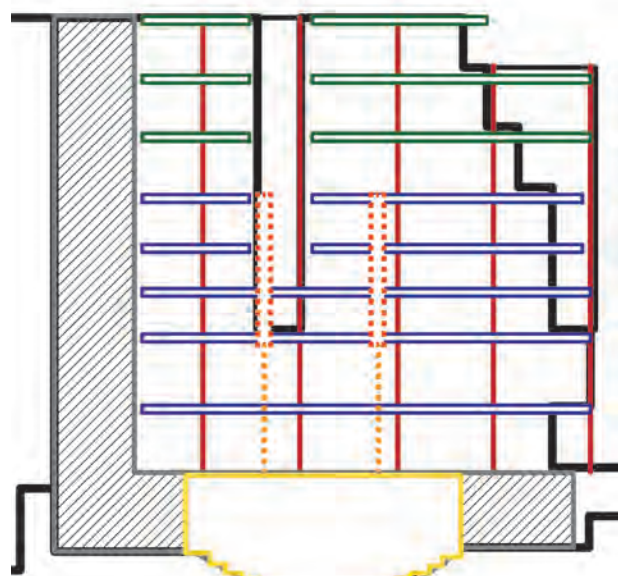


East-West Section Looking North, 1:200

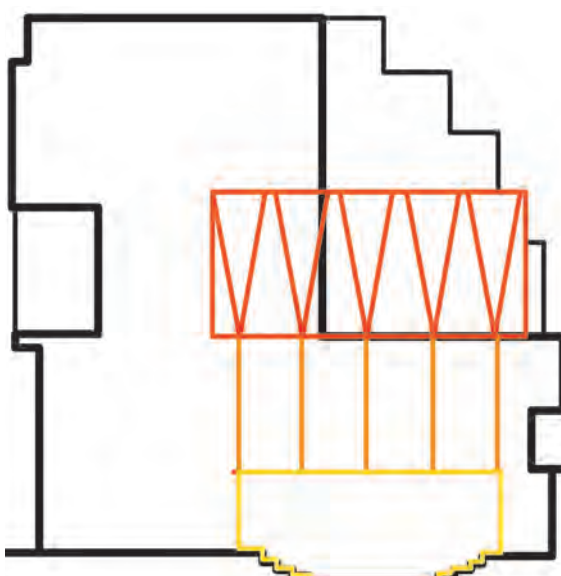


Ascending from Ground to Sky

Accessed directly from the Executive floors via a grand stair, the top floor features dining areas flanked by views of Lincoln's Inn Fields, the Shard, St. Paul's Cathedral and Greenwich. The larger dining area faces directly onto LIF and is intended to be used by the executive education visitors. The floor features a rich palette of timber windows, custom furniture and floor-to-ceiling sliding glass doors that open onto an outdoor dining area. A smaller cafe to the south is intended for LSE students and has expansive views of Portugal Street. Both spaces are united by a perimeter terrace, planted with low hawthorn trees and flowering bluebells.



Structural Concept
'Concrete to Steel to Timber'



Structural Concept
'Hanging the Agora'

- Timber Structure
- Concrete Plank Slabs
- Transfer Structure
- The Agora
- Steel Transfer Structure
- Steel Frame

The Agora

The main body of the Agora is a distinguished space of flexibility and efficiency. This state-of-the-art auditorium seats 400 and can be divided into two when needed. Illuminated by a courtyard to the north and a lightwell to the south, this dynamic space is supported by adjacent breakout areas.

Participants can be projected onto the surrounding balcony such that everyone will be able to see and speak to each other. This is a space that is both timeless and one that pushes the boundaries of theatre and communication of the future.



The Agora looking towards the Garden