

LSE

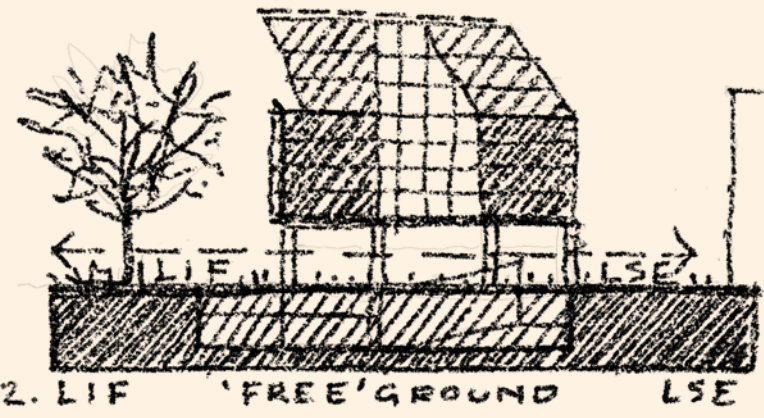
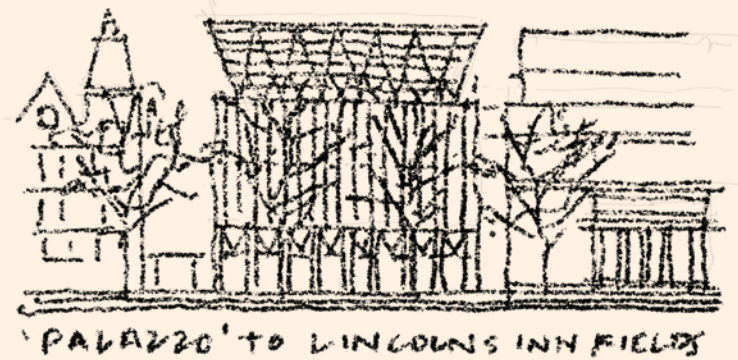
FIROZ LALJI

GLOBAL HUB

35 LINCOLN'S INN FIELDS

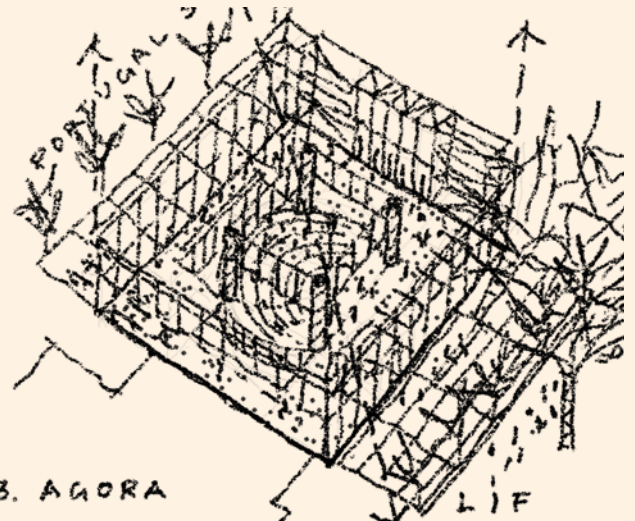
A Palazzo onto Lincoln's Inn Fields

Our over-arching idea for the building is to consider it as a characterful singular structure – a Palazzo inserted into its terrace, confidently asserting its presence on Lincoln's Inn Field. Whilst a foreground building, we have cast it in earthy terracotta tones to set the Royal College of Surgeons forward, whilst developing a closer alignment to the LSE's 32 Lincoln's Inn fields. It has proportions that mirror the horizontally ordered 'classical' architecture of basement, piano nobile, cornice and attic.



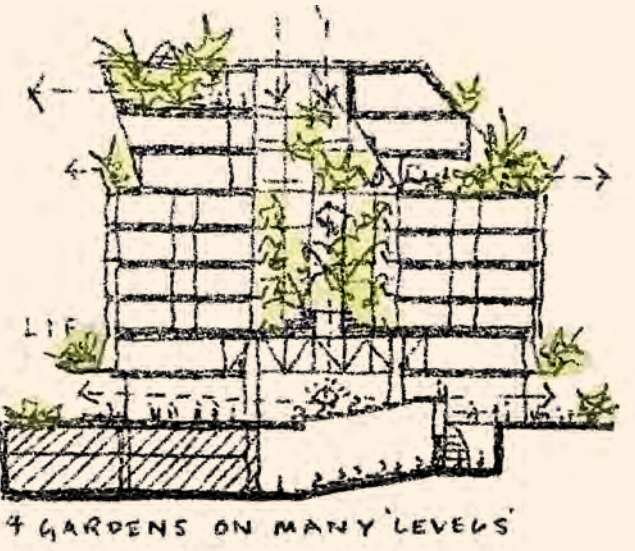
A 'Free' Ground floor as a hardscaped terrain

By locating the formal 'Internal Agora' into the basement, we create a free and democratic ground floor space characterised by civic space for informal meeting, congregation, socialising, exhibiting and eating. An 'External Agora' is sculpted from the roof of the Agora below, creating a place for relaxed debate at the heart of the building. With level thresholds onto LIF and Portugal street, the whole ground floor is gently sloped to accommodate the 680mm level change.



The Agora and its 4 Pillars of Meaning – Democratic space for debate

The 'Internal Agora' at basement level has been developed as a space in the round – a democratic space where debate can be conducted. Akin to a Greek theatre, it stretches in a semi-circular form with a centrally focussed 'stage' from which sessions can be adjudicated. Housed under a new transfer structure, 4 columns pick up a new structure above that at level 1 manifests itself as a heroic girder. The idea of the circle in the agora trickles through the articulation of the lower levels – whether it be the stepped rooflight, or the focus of the open agora. Capturing the feeling of meeting in a circle under a tree is a powerful global symbol.



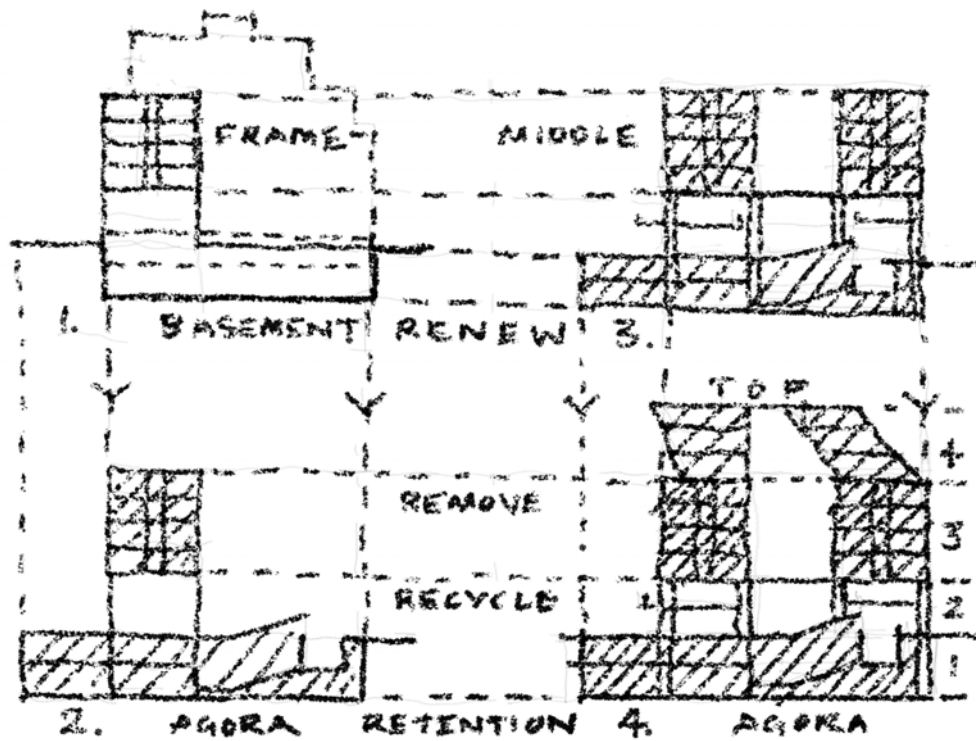
A Breathing, green building

At the heart of the building is a wonderful semi-enclosed courtyard – a 'winter garden', conceived as a richly planted court that surrounding rooms can enjoy a microclimate of fresh air, sunlight, and daylight. This Wintergarden Garden Court references the London Garden Squares and also the Botanic Temperate Houses of Royal Parks. It is characterised by planting that rises from its base to the top where it opens into a dramatic external roof garden. The importance of the human connection to fresh air and planting is celebrated across the different levels – the building infused with Biophilic benefits.



Aerial view from the NE corner of Lincoln's Inn Fields

Sectional Perspective looking towards the Royal College of Surgeons
The open ground floor and its sculpted agora, opening up to the courtyard above that holds, with its winding stair, the 4 clear layers of uses.



An Optimised and Celebrated Approach to Retention

Through the detailed carbon analysis of 8 retention variants – we have determined the optimum retention of 70% of the existing building frame, including the basement structure and the wing facing LIF. Demolishing the Portugal Street wing and linking floors, frees up the site to accommodate new floors on the same levels, the accommodation of the Agora, an optimum new structure over the agora, and a simplified set of structure free floors that can accommodate a variety of uses.

Demolished materials are reclaimed, recycled and re-purposed into the new building



1	2	4
	3	5