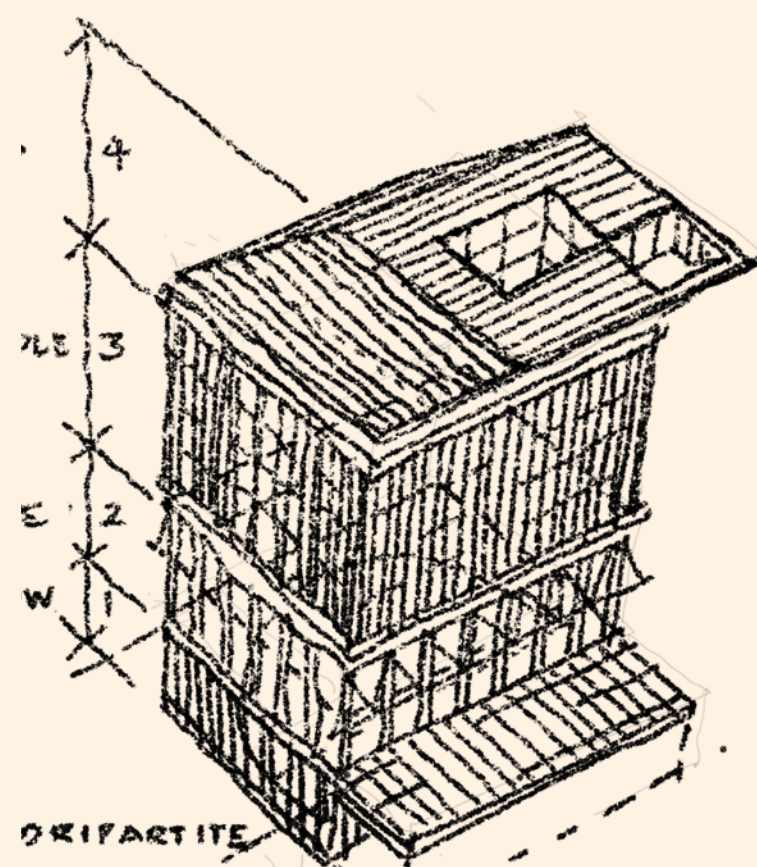


A Quadripartite stratification

Organisationally the building is set within 4 distinct tiers – each with their own character internally and externally:

- 1 – Basement** – these spaces are held by the 300 seat Agora and its associated break-out areas.
- 2 – Ground and First** – characterised by the open forum and social learning spaces of the ground floor, that in turn linked up to the Firoz Lalji Centre at Piano Nobile
- 3 – Four floors of academic clusters** set within the 'heavy body' of the building – planned over the lower floor-to-floor heights of the existing structure.
- 4 – The crowning Executive education layer**, topped by the restaurant and a wonderful west facing roof garden. This is conceived as a giant, back-cut cornice.



1	2	4
	3	5

LSE
FIROZ LALJI
GLOBAL HUB

D