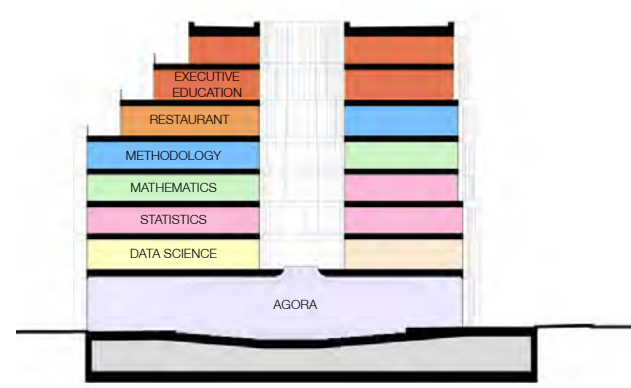




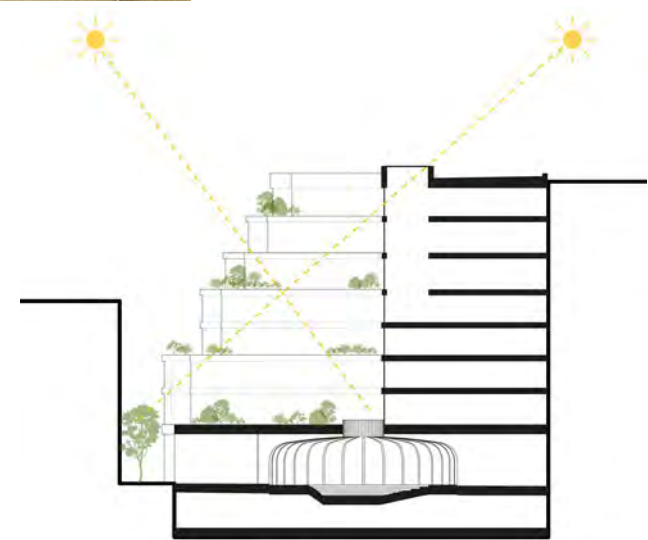
Portugal Street Elevation



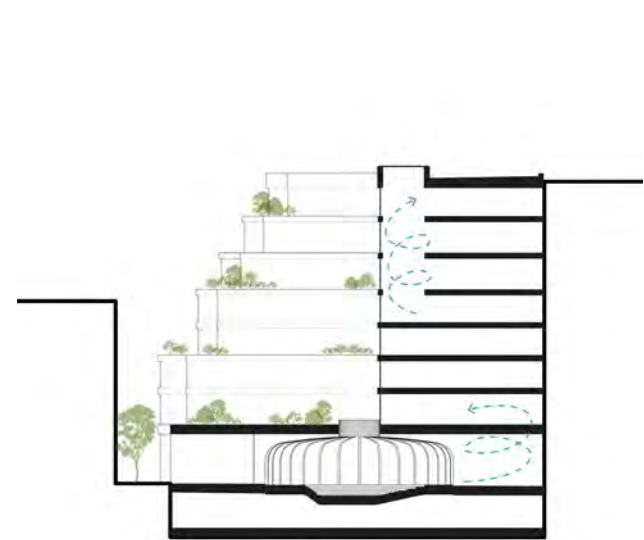
Social learning space as one emerges from lift



Program Organisation



Lightwell-being

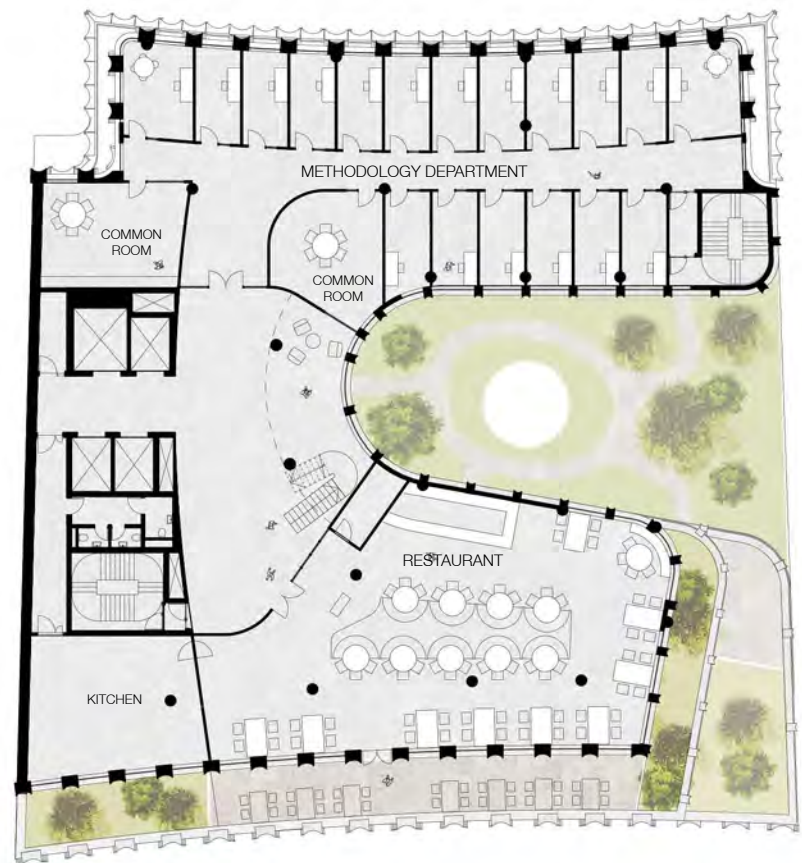


Circulation

Academic & Research Departments

The Academic and Research departments are organized primarily as one department per floor, on 1st to 5th floors. Each floor offers a generous communal Landing overlooking the courtyard for all building users as they emerge from the lift lobby. This provides a point of orientation, reception and access to the building's North and South Wings. Some floors, like the 1st and 2nd floors, hold two departments. These adjacencies will offer the Global Hub's communities fruitful opportunities for cross-disciplinary exchange and chance encounter. Departmental layouts maximize the South Wing's deep plan spaces with open plan offices, as well as natural light and views at the end of each corridor. Internal walls are a mix of translucent glazed and solid panels allowing exterior light to brighten interior spaces. These panels will convey movement and help to reinforce social connections within departments. To create a more generous and dynamic spatial flow, corridors are curved to echo the building's facade geometries.

1:400 FLOOR PLANS



FIFTH FLOOR: RESTAURANT & METHODOLOGY DEPARTMENT



FOURTH FLOOR: METHODOLOGY & MATHEMATICS DEPARTMENTS



THIRD FLOOR: MATHEMATICS & STATISTICS DEPARTMENTS



SECOND FLOOR: STATISTICS DEPARTMENT



Portugal Street Approach

