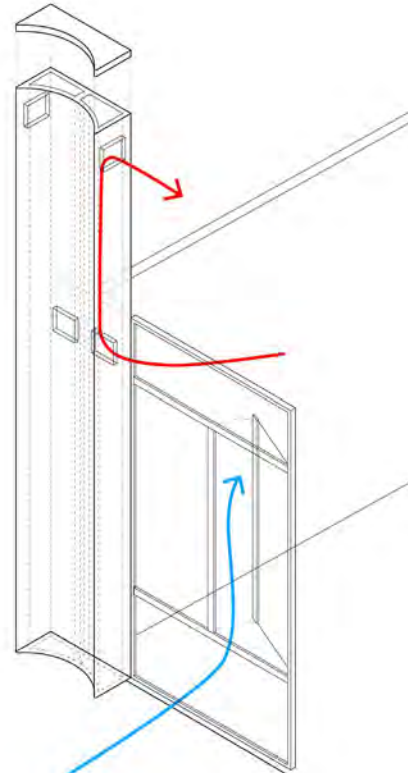




Executive Education Break Out Space

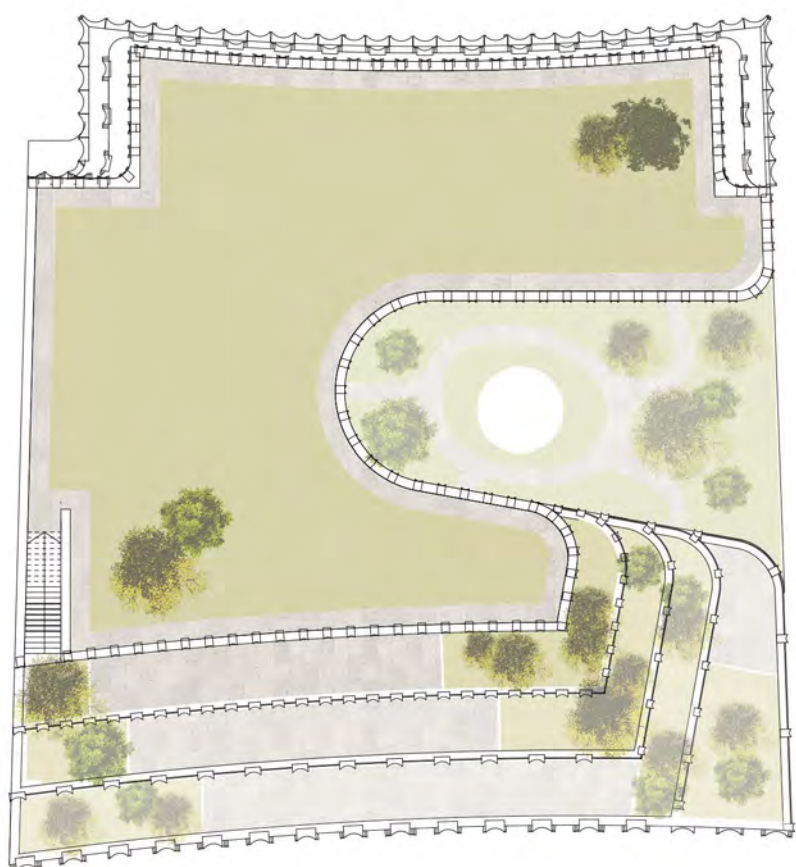
Executive Education

The Executive Education Facility crowns our Firoz Lalji Global Hub, occupying the top two floors above 5th floor Restaurant and Roof Terrace. A triple height space and interconnecting staircase supplement movement and connectivity between the Restaurant Foyer and Executive Education floors. Large Harvard and Seminar Rooms occupy the North Wing overlooking Lincoln's Inn Fields. This concentrates the large span teaching spaces within one structural zone. Generous south facing roof terraces will expand the Exec Ed facility and incorporate an extensive planting scheme. These terraced outdoor spaces will benefit from a sheltered position created by the 32 Lincoln's Inn Fields to the east and the party wall of the Royal College of Surgeons to the west.

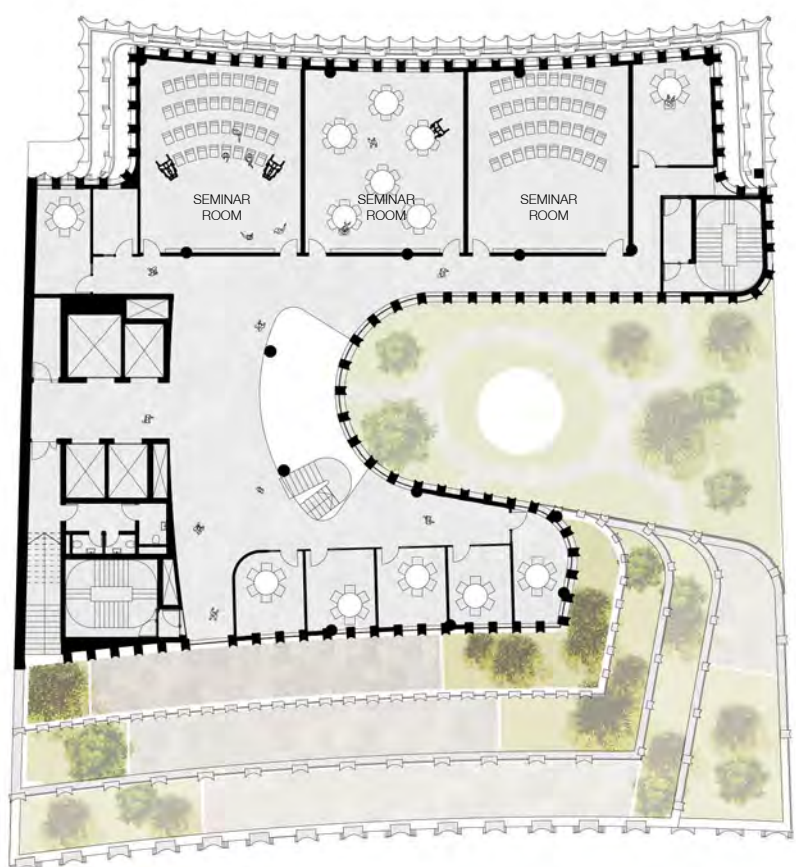


Solar Chimney Office Ventilation

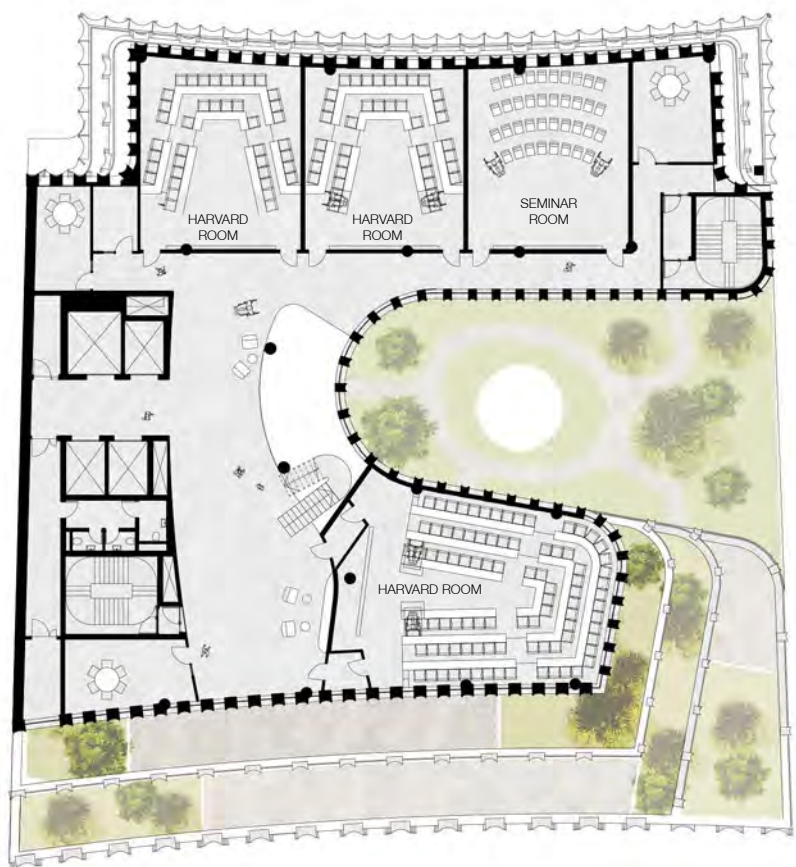
1:400 FLOOR PLANS



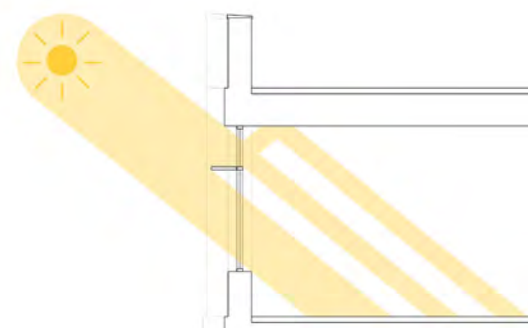
ROOF



SEVENTH FLOOR: EXECUTIVE EDUCATION



SIXTH FLOOR: EXECUTIVE EDUCATION



Light Shelves on Southern Facade

Embedded Sustainability

We are dedicated to fulfilling the LSE's 2030 strategies to significantly reduce embodied and operational carbon with this project. With the advice of our consultant team, we have determined that retention of the Nuffield Building at 35 Lincoln's Inn Fields is not feasible. This is due to the cost, time and carbon that would be required to repurpose the existing building to accommodate the bespoke spatial requirements of the Firoz Lalji Global Hub, and to serve the LSE's long term performance requirements.

Adaptability and robustness are key. We can bring our relevant experience using pre-fabrication to reduce materials, waste and the construction timetable. Prefabrication reduces energy consumption and carbon produced during the construction process. A high-performance envelope and robust concrete frame will be critical to the building's longevity, fire-proofing, acoustic performance and thermal mass, mediating the impacts of rising temperatures and enabling the effective use of natural ventilation.

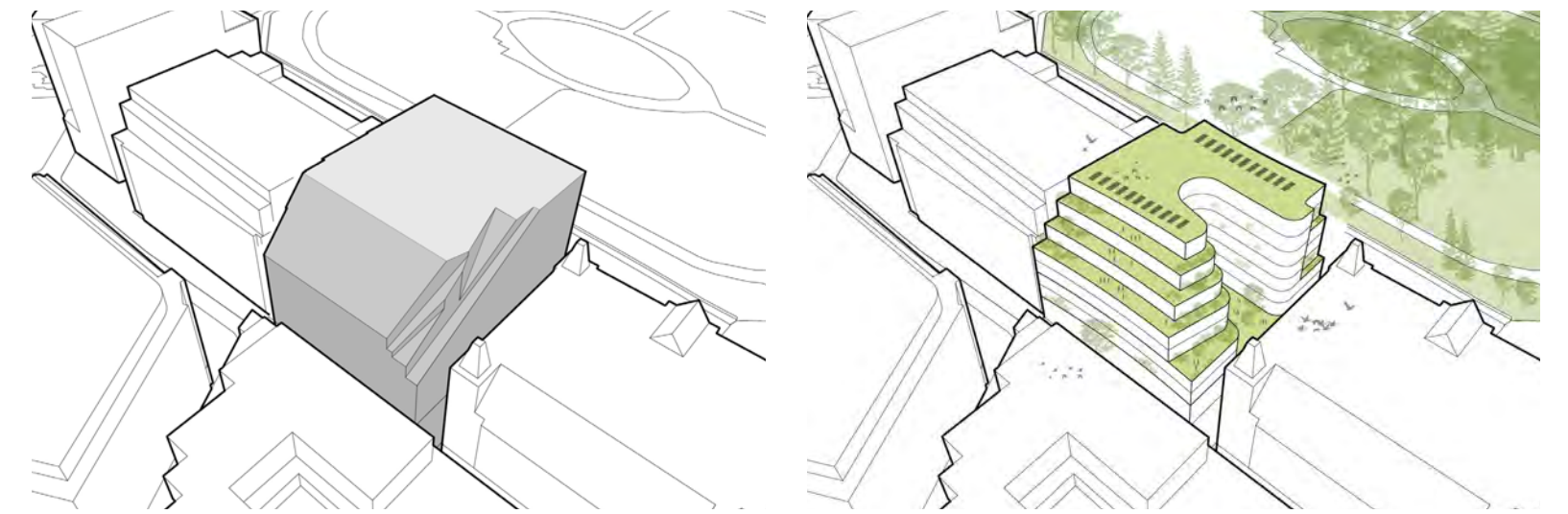
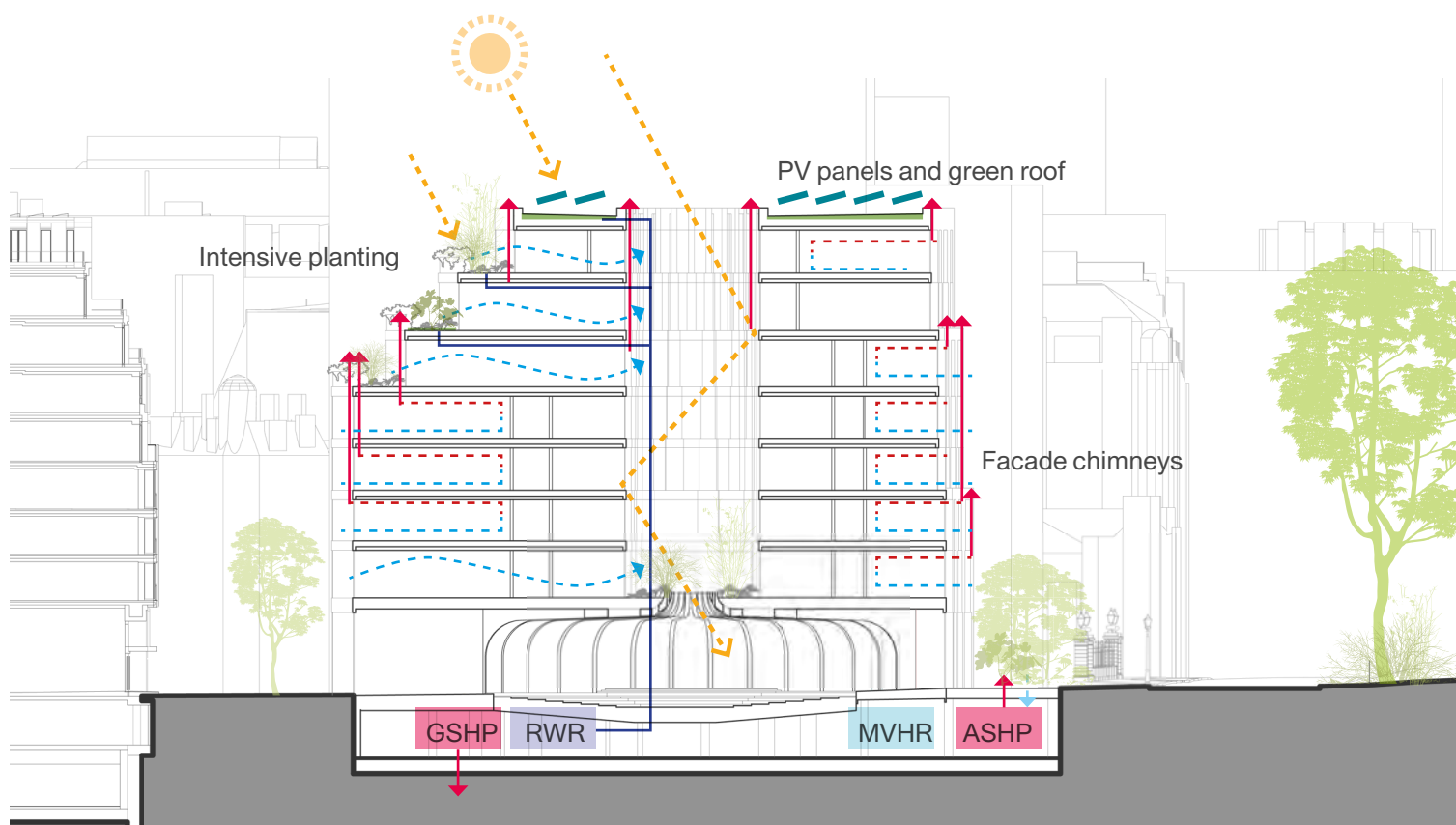
To reduce embodied carbon we will employ new materials and technologies such as high GGBS and earth-friendly concrete. We intend to feature recycled and natural materials throughout the building and its furnishings. Through these materials the Firoz Lalji Global Hub will highlight sustainable practices adopted from the Global South.

Building Organisation: C-Shaped Plan Form

The ground floor elliptical Agora and its Foyer act as the building's civic plinth. Above this the building takes the form of a c-shaped massing, a courtyard building that opens to the east. The space of the courtyard is softened with its circular form and angled sides that radiates outward. This c-shaped plan form maximizes facade area, allowing every space in the building to be naturally lit and ventilated, save three small private meeting spaces. The courtyard's smoothly curved facades frame the beautiful East elevation of No. 32 LIF.

The courtyard offers the Hub's researchers and academics a still and reflective space in contrast to the outward facing, urban elevations. Its facades are lined with glazed terra cotta flutes in the tradition of 19th Century urban courtyard buildings. Its planted ledges can offer moments of greenery to individual offices and communal research spaces.

At every level, the building users will have an immediate prospect to the exterior from 'Landings' adjacent to the vertical circulation core. Together they will act as a consistent, vertical learning commons. Rising through the building these landings expand into a generous foyer for the sixth floor Restaurant and breakout spaces for the 6th and 7th Floor Executive Education facility.



Massing: Light & Nature Amplified

To ensure every office and meeting space in the new Global Hub can be naturally lit and ventilated we have sculpted the massing envelope to create an east-facing C-shaped building form. This strategy maximizes facade area for office windows, captures the morning light and increases the afternoon sun currently enjoyed by the neighbouring 32 Lincoln's Inn Fields. The courtyard's curvature maximizes both direct and indirect sunlight and allows oblique views from offices and meeting spaces. A coherent, VSC-compliant stepped massing to the southeast creates terraces capable of supporting planting. This strategy encourages biodiversity and access to nature throughout the building. Adhering to an overall strategy of softening and greening, the Global Hub will significantly enhance views toward this site from surrounding buildings.

