

Reuse, reimagine, redefine

Responsibly expanding the LSE

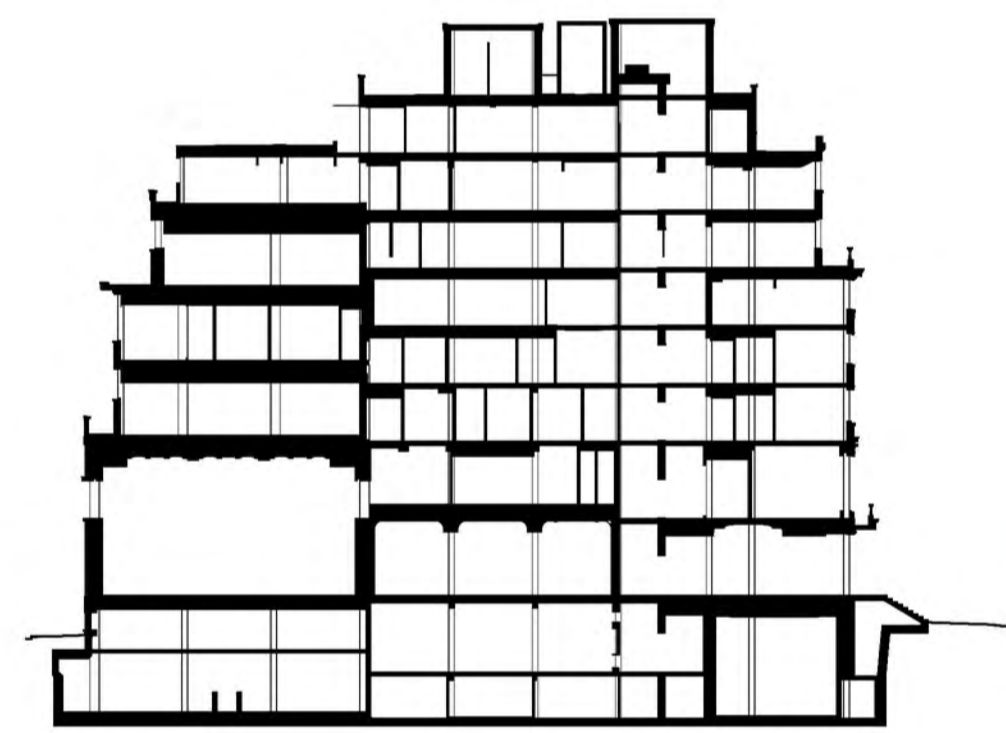
The building will take a radical approach to reusing the existing building and its materials. It is increasingly our moral imperative to find ways to intelligently reuse existing urban fabric in order to directly address the central issue facing society today: climate change and environmental destruction. As a result, the Firoz Lalji Global Hub will exemplify not just the careful management of resources through reuse, but also the aesthetic opportunities of reimagining the idea and identity of the building. In doing so, it will expand the ideas embodied by the LSE, becoming an exemplar of intelligent reuse, decarbonisation and environmental responsibility.

The building enjoys two distinct characters. Formal towards Lincoln's Inn Fields and informal facing the LSE campus with the reimagined building, extending and amplifying both aspects. The ideas of the project are found in the limits of what the existing building presents, and the programmatic and organisational demands of the new Global Hub. Our approach does not seek to limit the latter or preserve the former. Instead, our process exposes the opportunities of the brief and takes an open, liberated approach to adapting and elevating the existing architectural qualities into a new enduring synthesis.

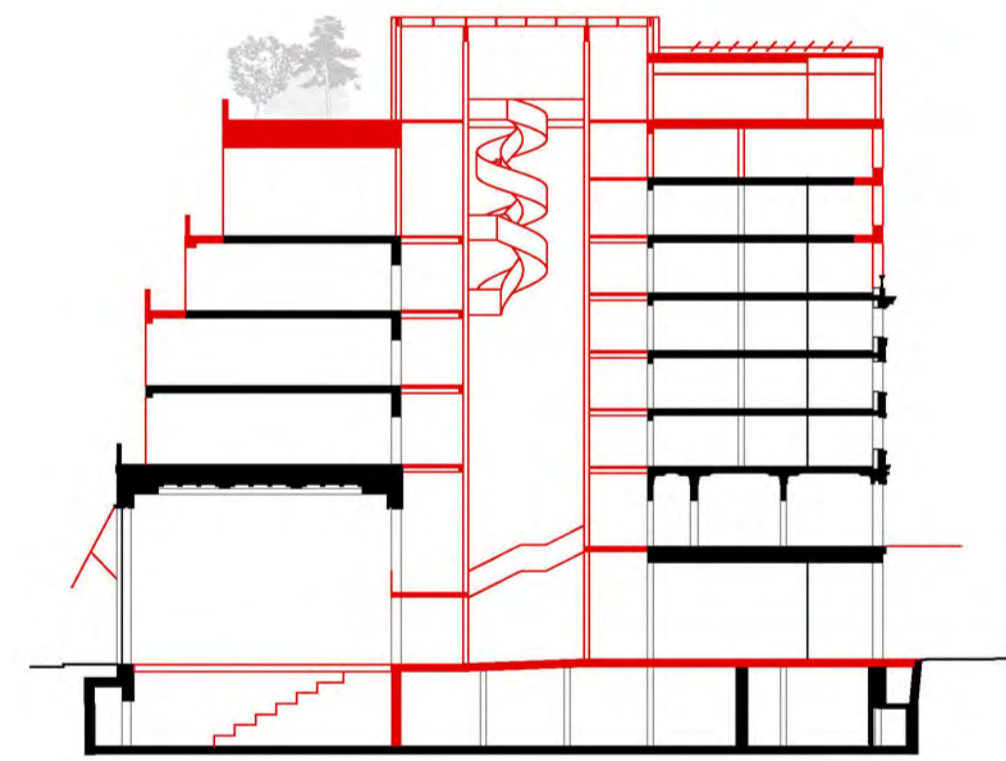
The new Lincoln's Inn Fields façade is confidently reimagined as a large civic palazzo, elevating and enhancing its formal setting on the square. Small scale pediments and corbels are removed while the important characteristics of cornice and balcony are

reconfigured to present a more fitting aesthetic for this address. All the brickwork is lightly washed to establish a singular quality in dialogue with the Royal College of Surgeons which it calmly frames with the Marshall Building, strengthening the civic presence of the LSE on the square. At the heart of our approach is a building that seeks to open up and create new links into its surroundings. A welcoming entrance sequence is envisaged at ground floor, with maximum permeability and a new sense of arrival, lowering the entrance level to grade, flush and level, from Lincoln's Inn Fields to Portugal Street. A new landscaped forecourt on Lincoln's Inn Fields, with extended openings on the front elevation acts as a welcoming threshold and an open colonnade for the café and amenities inside.

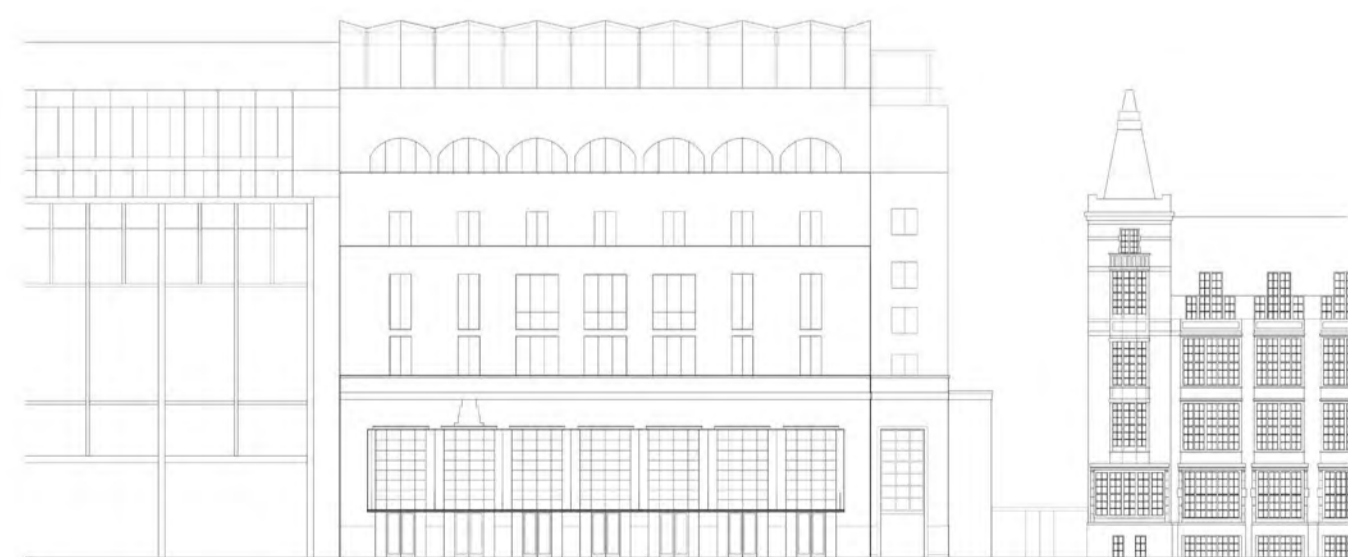
The informal character of the original stepped volumes to Portugal Street is retained and extended on the upper levels and east side of the new building, increasing its terraces and providing human-scaled spaces for gathering. The washed brickwork from the north façade is continued on the lower floors adjacent the link to 32 Lincoln's Inn Fields, highlighting an open main entrance portico towards the campus. The original high level Lumley Hall windows are extended to pavement with large doors offering openness, porosity and a theatrical street atmosphere. New internal program on the additional levels generates loggias and balconies that further define the building's new identity and its active relationship to the LSE campus.



Existing section



Proposed section showing retained (black) and new (red)



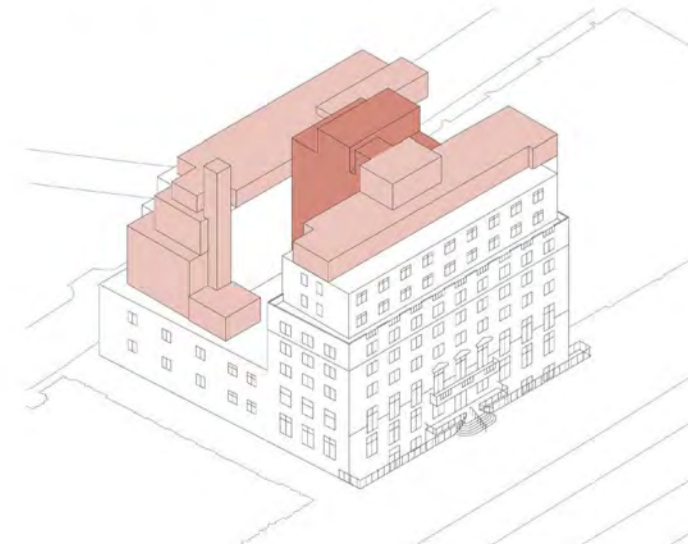
South elevation to Portugal Street



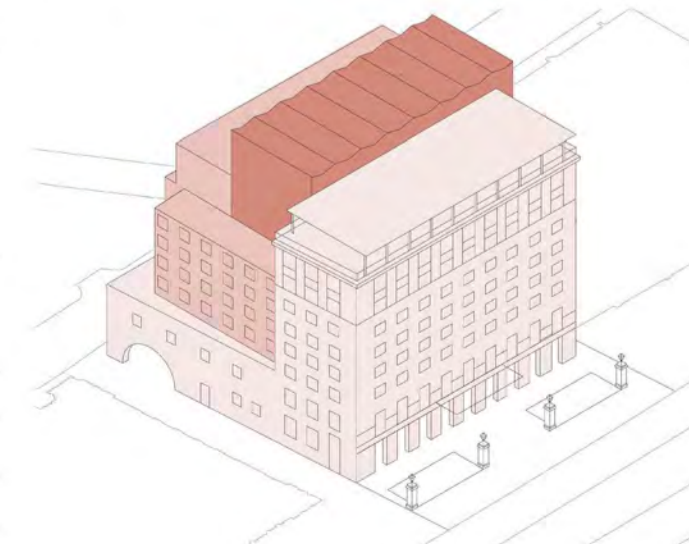
East elevation to 32 LIF



View looking west. The informal stepped south façade looks out onto Portugal Street. Permeable openings at ground level integrate the building with the life of the campus.



Careful removal of rooftop additions



35 LIF reimagined as a diverse collage of volumes, materials, programs enjoying its varied context