

Campus in a campus

Independence and connection in one vertical village

The diverse range of academic, teaching and public functions and users accommodated within the building is distributed vertically in two separate wings around a new timber top-lit atrium that rises through the full height of the building. This central shared space both unifies and divides these functions between the rich diversity of activities found in the permeable public ground floor and the hub's restaurant and rooftop garden above.

The distribution of program is informed by the spatial qualities of the retained structure and shaped by the surrounding context. The calmer academic accommodation benefits from green spaces and views over Lincoln's Inn Fields to the north, while the executive teaching and lounge spaces benefit from higher ceilings, terraces and visibility of the southern façade overlooking Portugal Street and the activity of the campus.

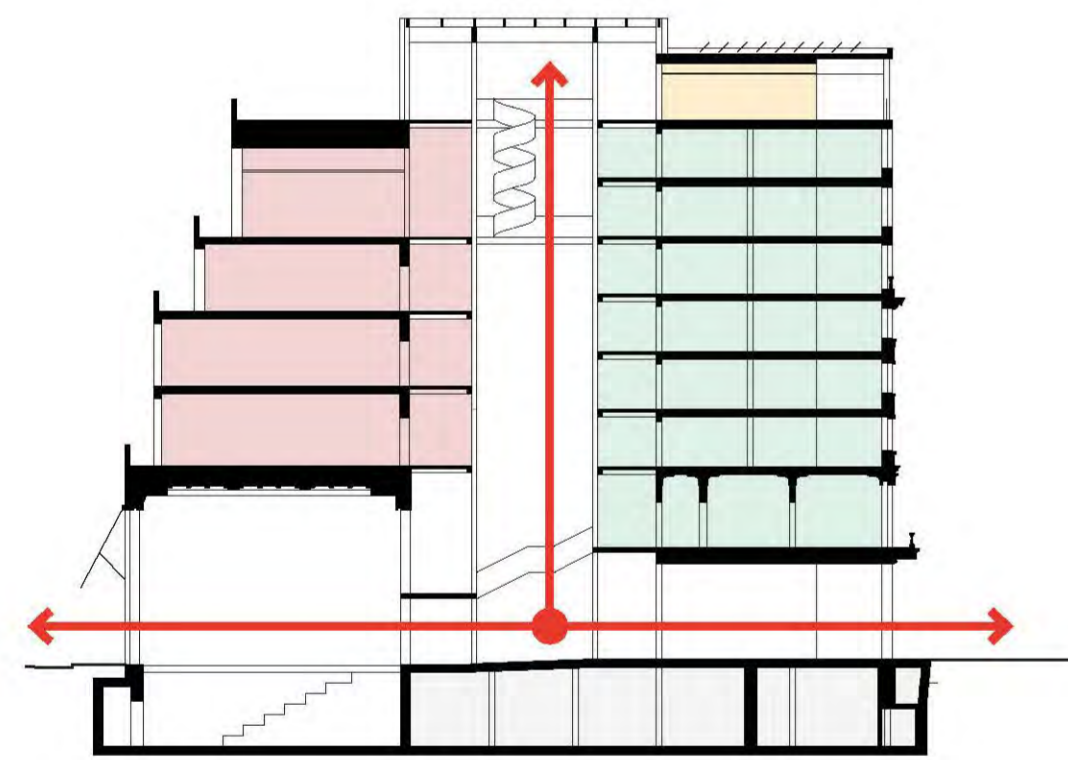
This organisation is reflected in a series of different internal and external identities within the building. The flexible academic spaces are characterised by their formal presence on Lincoln's Inn Fields. A reception space on each floor adjacent to the lifts to help to orient users, the cellular offices positioned around the perimeter provide daylight, natural ventilation and privacy, while communal spaces arranged centrally towards the atrium encourage collaborative working and visible interaction between students and staff.

The more refined timber-lined executive education spaces and break-out lounge exploit the set-back green terraces to provide a generous series of spaces optimised for teaching and debate that is directly linked to the rooftop restaurant and garden.

A new timber structure between these two wings adds to the retained structural frame to give the building its own internal identity that climbs to the rooftop garden and forms a dynamic experience of movement, exchange and informal encounter between ground and sky.

The Global Hub can be seen as a series of buildings within the building and its public ground floor is formed by a collection of diverse intimate spaces tailored to its different users and activities that are both shared and individual. The Firoz Lalji Institute for Africa is prominently located on the piano nobile above the formal Lincoln's Inn Fields entrance and includes balconies both towards the square and the central atrium to maximise its presence. Its gallery is dispersed throughout the building up the full height of its atrium to engage with the Global Hub's various users and visitors.

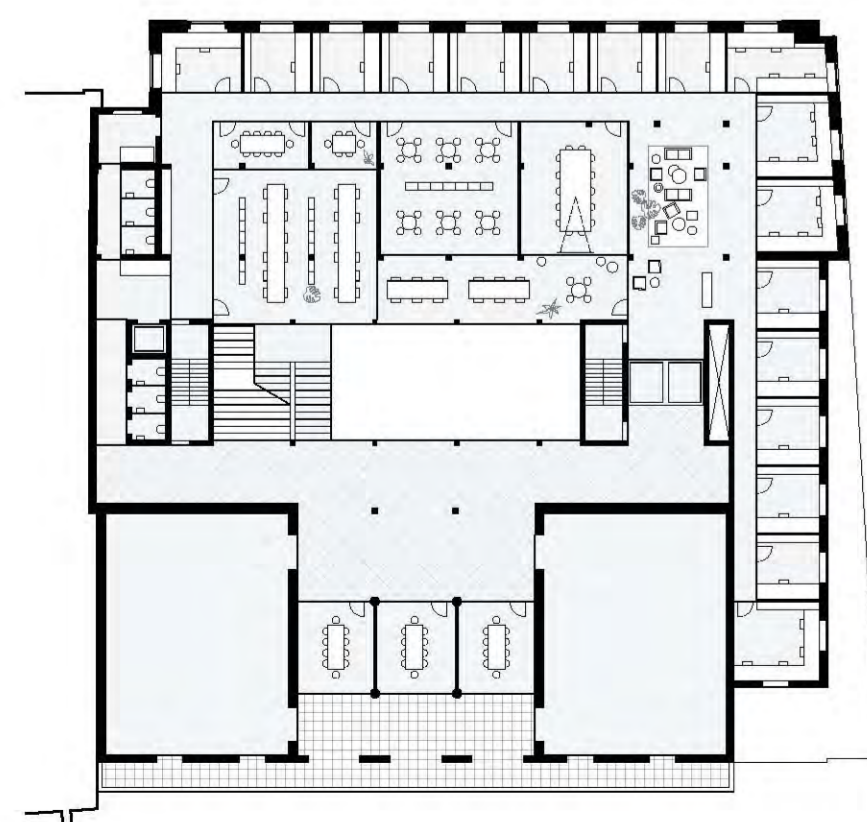
The reuse and extension of the existing structure provides the capacity for the building to continuously accommodate the evolving needs of its users, the estate, the institution and the planet throughout its lifetime. To ensure flexibility over time, the design proposes a building that is adaptable in the long-term, adjustable in the medium-term and agile in the short-term. Although able to accommodate the requirements of its initial end users the robust nature of the design and key base-build decisions will allow the university to adapt and reconfigure its spaces and uses when required providing long-term viability.



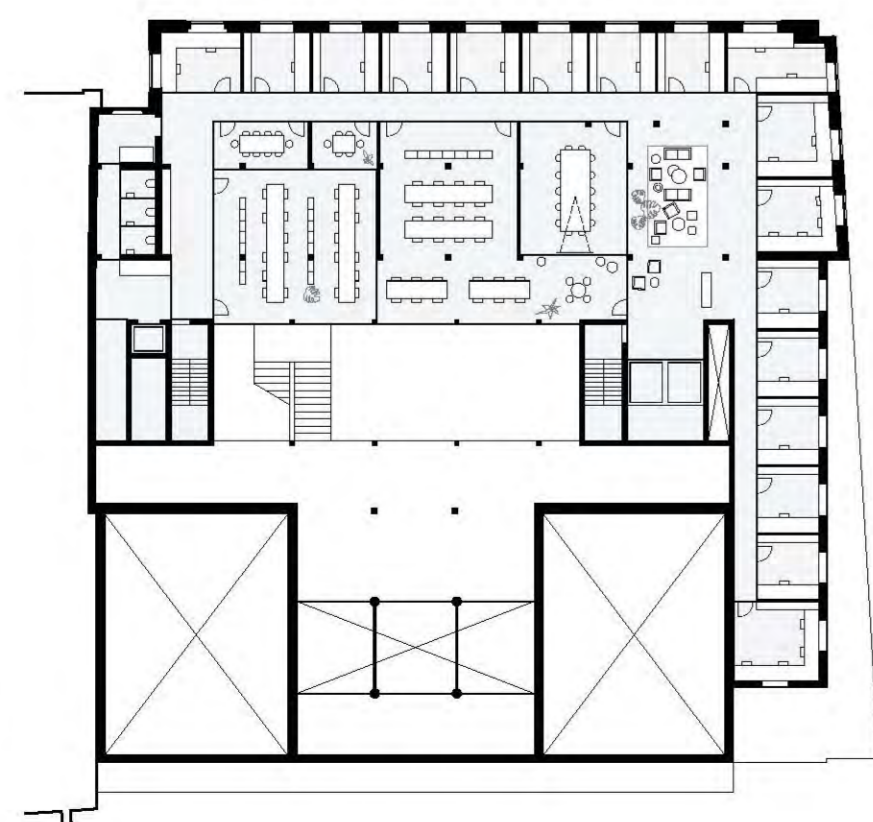
Section north-south showing distribution of functions within the building



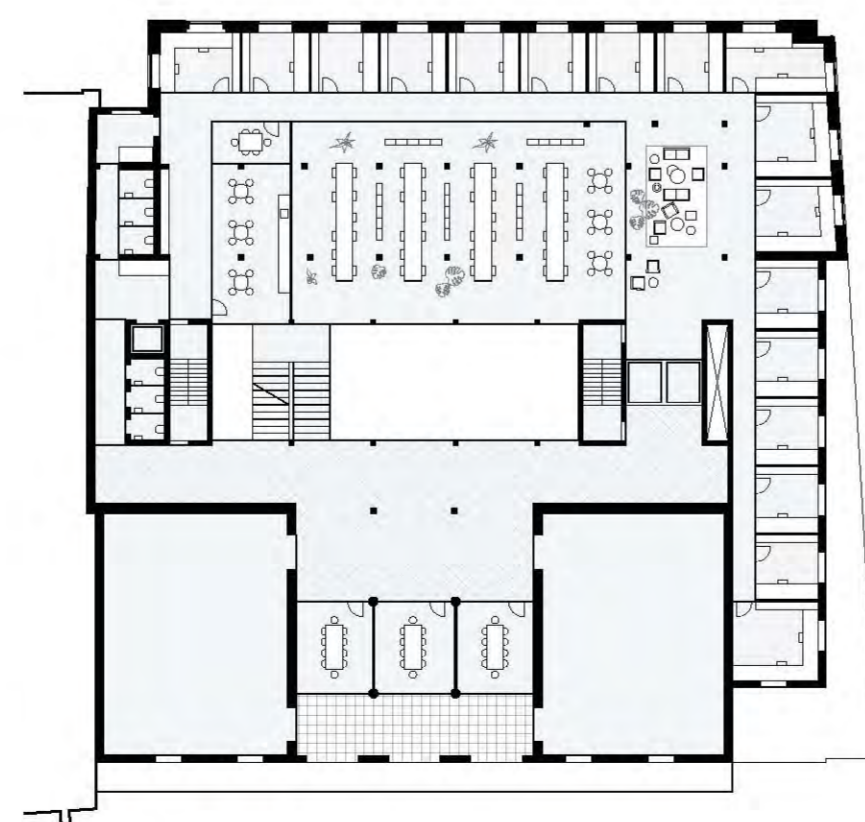
Cross section showing the diversity of spaces throughout the building which open to both LIF and Portugal Street. A central atrium, which also serves as exhibition space, provides a dynamic area and draws daylight through the building.



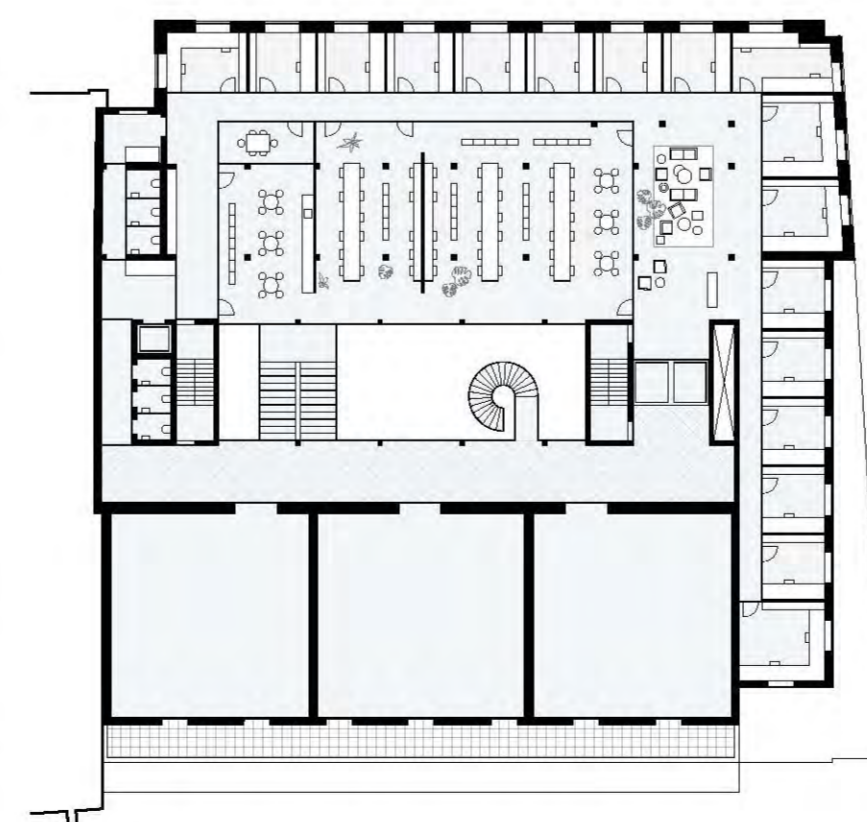
Second floor plan - Extended education, Methodology



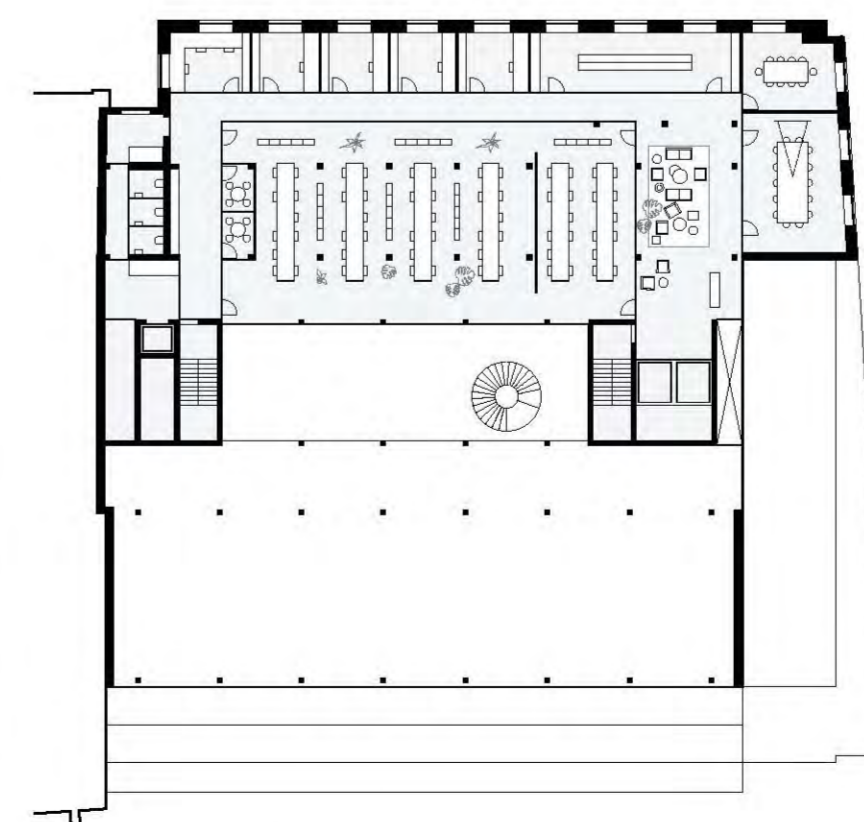
Third floor plan - statistics



Fourth floor plan - extended education, statistics



Fifth floor plan - executive education, mathematics



Seventh floor plan - data sciences hub