

# A dynamic ground floor agora

## Local connections and global reach

As a counterpoint to the sloped ground floor plaza of the Marshall Building, the Global Hub opens its entrances to a variety of activities including the dynamic new agora space.

The addition of this adaptable space will generate a new global identity and presence for LSE. It will become a place to bring the world together physically in London and virtually online in order to discuss the greatest global challenges of our time, where debate is inclusive and diverse.

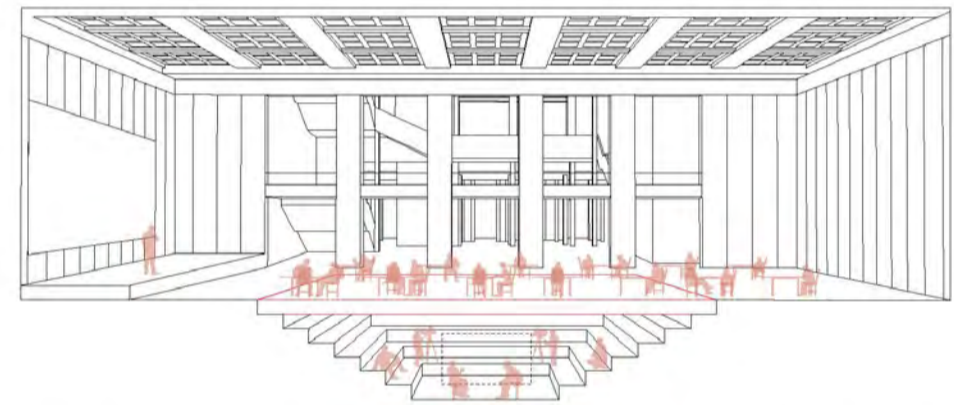
By adapting and extending the Lumley Hall into the existing basement, this new enlarged and flexible space will form a collective centrepiece for the Global Hub. The movement of its floor, the territory of the agora itself, will adapt the space to serve different types of activities, providing a reconfigurable series of spaces that can be tailored to the ambitions and needs of LSE.

This mobile floor will mask the primary auditorium when not in use, enabling it to function as a smaller broadcasting space and allowing the LSE to host dinners and other events above. The platform can also be used to form a stage for concerts and platform discussions when combined with the retractable bleachers. When raised to half height, the agora can form an informal study area above its moving platform and an intimate lecture space below and when fully raised the space will become an amphitheatre fit to host large-scale set-piece international gatherings.

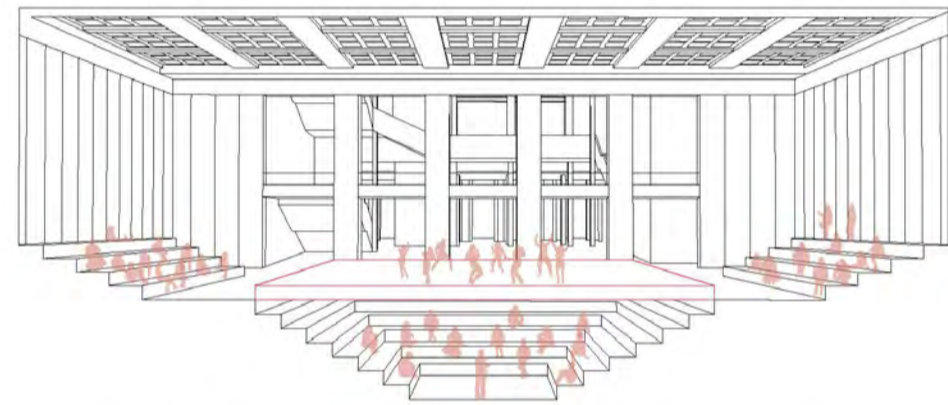
The movement of its platform will allow each of these temporary occupancies to be optimised without being compromised to accommodate a range of different physical and virtual users. Technology integrated into the underside of the platform and the surrounding space will expand the capacity of the venue giving it limitless reach. This virtual capability will enable users of the building to reach beyond its immediate physical context to participate in experiences in a variety of ways – as individuals, as intimate groups or as part of a larger global crowd.

The space responds to both sides of the building, its more formal forecourt to Lincoln's Inn Fields forms a ceremonial entrance for events and more permeable openings to Portugal Street will allow for both day-to-day access to the building as well as a direct interaction between the activities in the agora and the street outside, completely reimagining how the building connects to the public realm. While the Lumley Hall serves as the agora, the atrium serves as the agora break-out space.

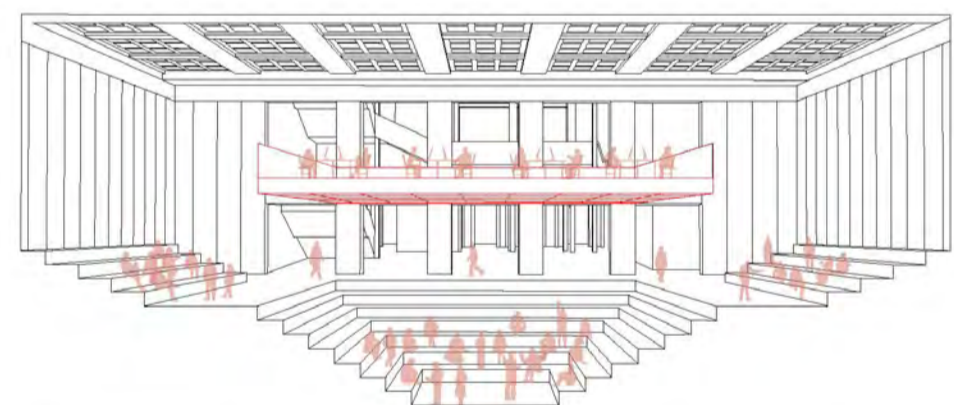
This expressive new agora offers the possibility of assembly at a variety of different registers with its multi-directional and dispersed nature mobilised to encourage a range of different voices. Its unique identity will generate pride and celebrate people coming together to explore, share, confront and challenge the issues of the day as a physical demonstration of LSE's values, enabling the institution to its mission as place of vision, encounter and connection both within and beyond its campus.



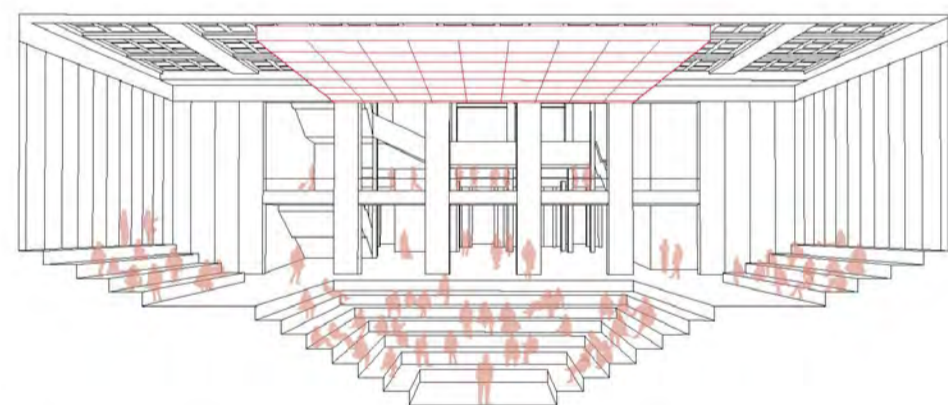
Flat floor: full flexibility for events with broadcasting space below



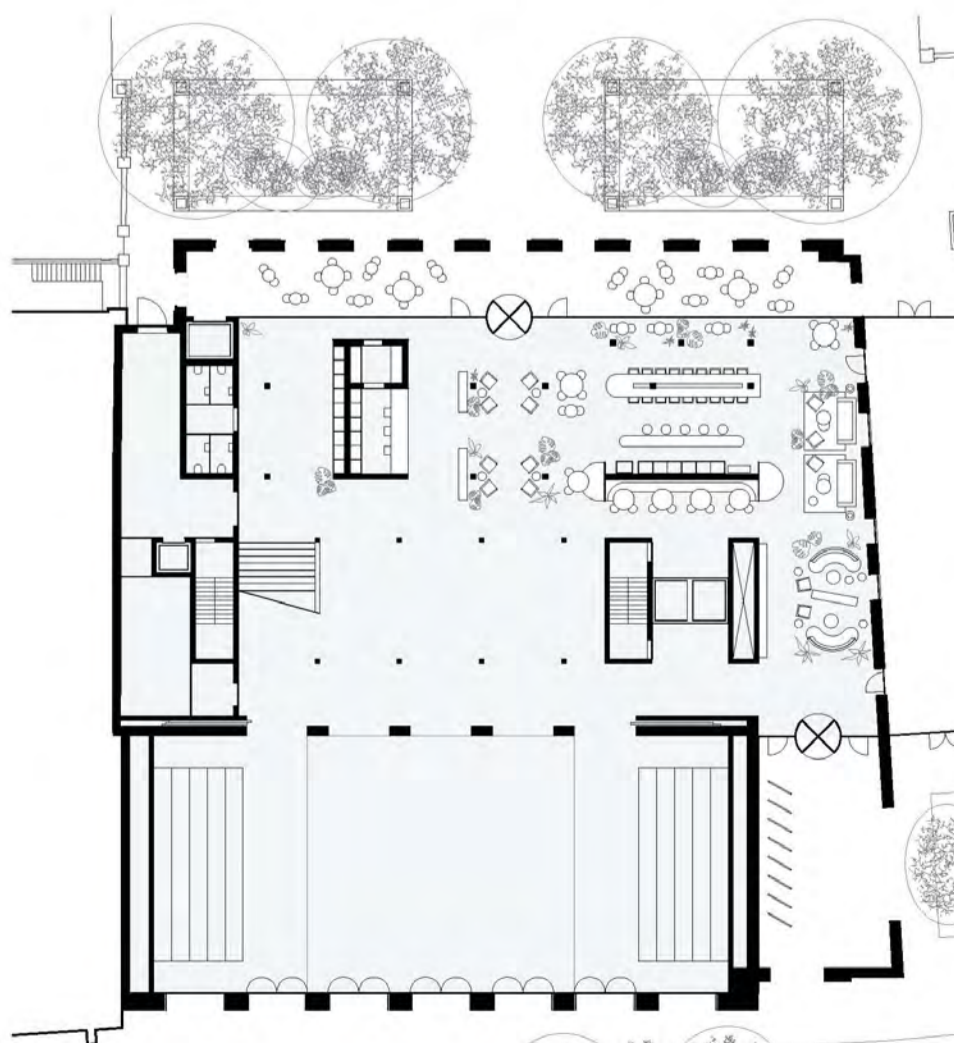
Stage platform: performance space with side bleachers



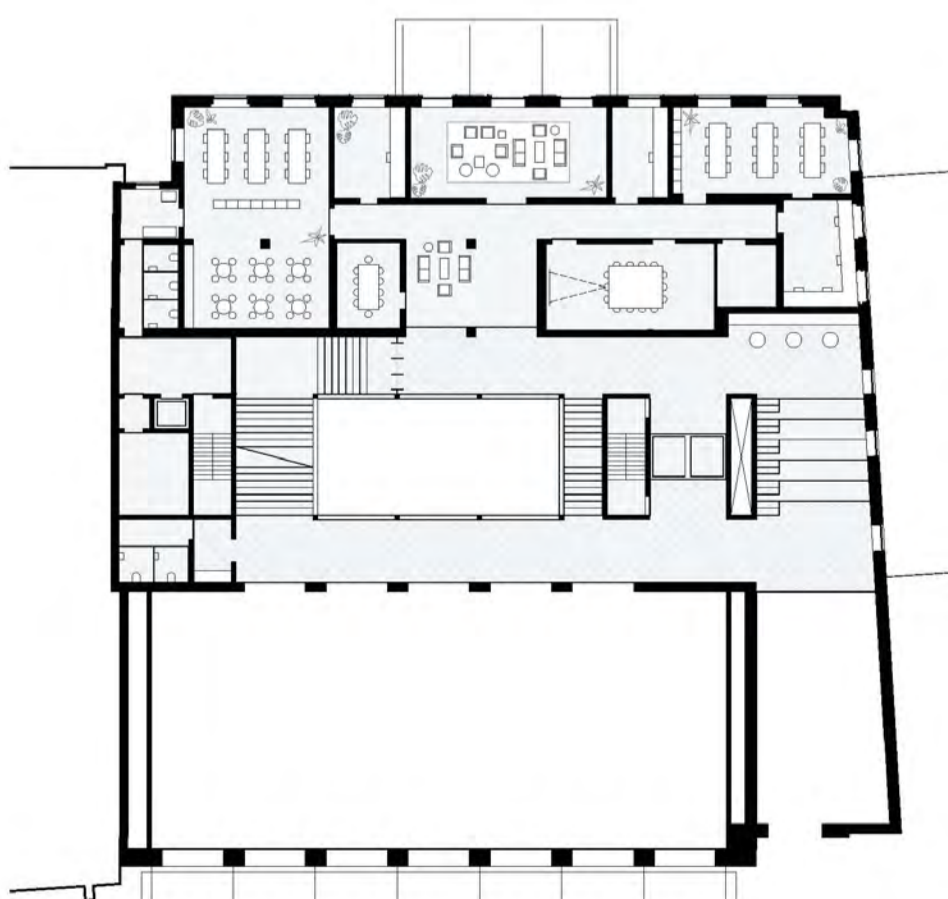
Half-height platform: intimate assembly space below with study areas above



Raised platform: large scale set-piece event



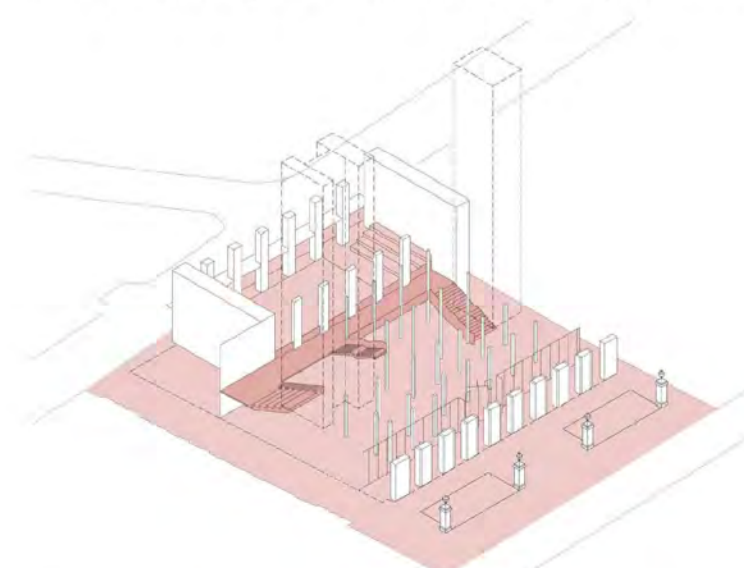
Ground floor plan - campus agora, cafe and entrance lobby



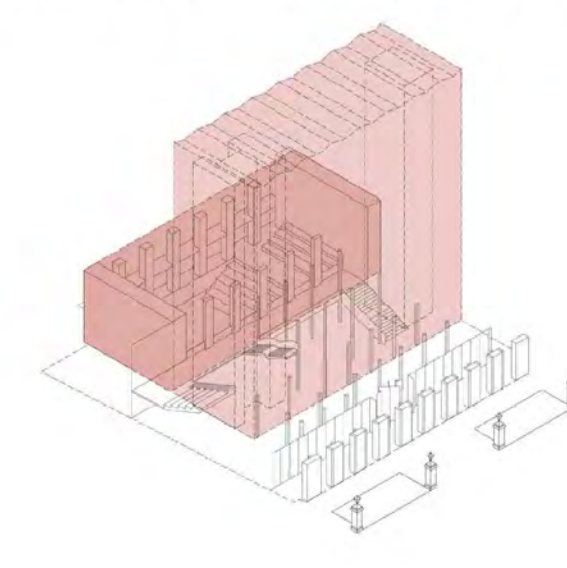
First floor plan - Firoz Lalji Institute for Africa, agora gallery



The dynamic agora set up for a global hybrid event. The moveable platform allows the space to be adapted to host a wide range of events and gatherings.



The lowered and permeable ground floor adds a new large-scale dimension to the LSE campus



A variety of spaces allow closed, open or combined arrangements for singular or multiple events and platforms