

Milestone progress

- January 2017**
Construction Starts onsite
- April 2017**
Piling works completed
- June 2017**
Site welfare accommodation installed
- July / Aug 2017**
Tower Cranes erected and basement excavation complete
- Jan / April 2018**
Concrete cores complete. External envelope in progress.
- Aug / Oct 2018**
Tower Cranes removed. Cladding complete
- December 2018**
Testing & Commissioning commences.
- April 2019**
Project build complete and soft landings commence

Upcoming site activities



Our substructure and superstructure contractor Getjar has now commenced on site with secant wall capping beam construction, which will be closely followed by the basement excavation.

A key challenge to these activities is traffic management at the site entrance which is strictly controlled by our traffic marshals and the use of our web based delivery booking system.

We have also engaged with Multiplex and Wates who are working on significant projects on the campus periphery and Mace will lead regular coordination meetings.

Site operating hours:

Monday to Friday 7:30am-18:00pm

Saturdays 7.30am-13.00pm

The sites main operating hours above will ensure that any earth removal, piling work and mechanical building operations are confined to these hours. Outside these times there may be personnel on site; however their activities will be restricted so as not to disrupt the local community.

Mace project office: Kings Chambers, Portugal St London WC2A 2HF

Mace head office: 155 Moorgate, London, EC2M 6XB

Who to contact

We are always keen to improve our relations with our neighbours and those affected by our works and would welcome any suggestions you may have. If you have any queries or would like to know more please contact us.

Community Liaison:
Harish Raghwani



Project Manager:
Darren Pope



In this issue:

Welcome to our First issue of the CBR community update.

This publication aims to keep you involved and informed of this project and the works we have planned over the next few weeks.

Headlines in brief:

- site and design update
- upcoming activities
- project timeline
- who to contact
- site opening hours

Community update

LSE - Centre Buildings Redevelopment



CGI Image of the New CBR Building

Site and design update

A very warm welcome to the first of a regular newsletter from the Mace team working with the LSE on the new Centre Buildings Redevelopment Project.

We propose to issue a bi-monthly newsletter in which we intend to keep you informed of activities on and off site and up and coming events that may be observed in and around the campus.

We fully understand that building activities can be disruptive and hope that working together and communicating effectively will help to minimise the impact of our works.

Since we commenced on site in January we have completed secant piling works with a CSP Rig which has now been removed from site. The LDA rig and

associated plant will remain on site to complete load bearing piles and we anticipate removal of the rig w/c 10th April 2017.

We have worked closely with Westminster City Council to arrange both delivery and removal of the rigs and plant overnight to avoid disruption to the university campus and our neighbours.

The Mace site team are committed to the Considerate Constructor Scheme (CCS) and aim to fully engage with the community and our neighbours. We are currently working with Crisis to help with issues of homelessness around the University campus.



www.ccscheme.org.uk



Site Team

The Mace PREACH site team assembled to deliver the LSE Centre Buildings Redevelopment.

This is an experienced team who have excellent understanding of working in a university environment and in confined city centre sites.



Mace Site Team



CSP and LDA Piling Rigs working on site

Piling Starts

Piling has progressed well since we commenced on site in January.

Both the CSP and LDA rigs are shown in operation on a very confined site.

Coordination and segregation between vehicles, plant and the work force is paramount and requires strict management and full focus from all on site.

Well planned and managed traffic movements at the site entrance is particularly important on the CBR project. Our traffic marshals are fully trained and equipped with body cameras. This assists us with engagement with delivery drivers, general road users and the public should any issues occur.



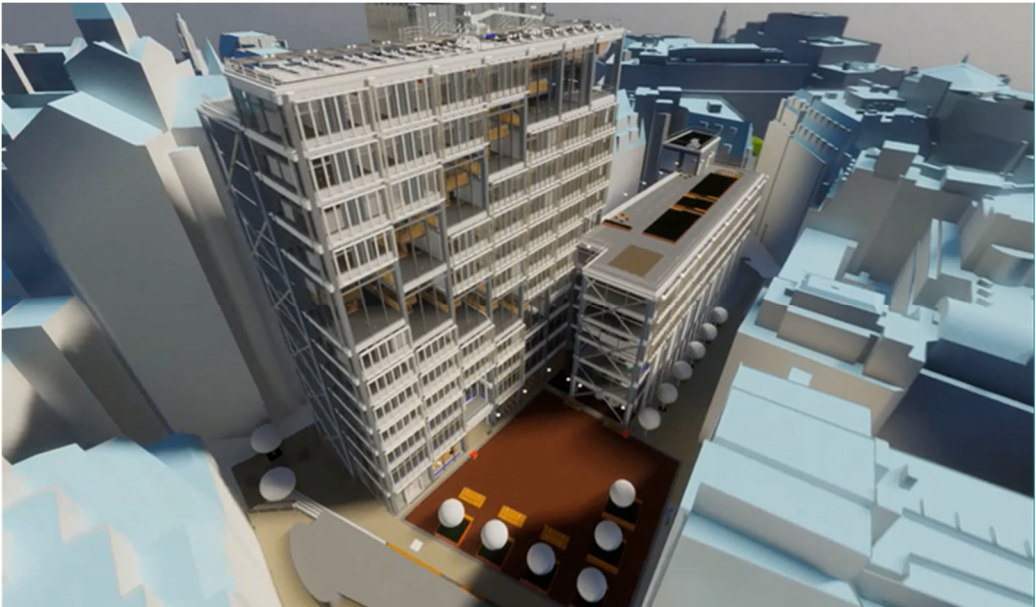
Traffic Marshal Body Camera



Traffic Management



LSE "Town Hall" Presentations



BIM Model view of Building

Our Design team have produce a BIM model to assist in visualising the building, enhancing architectural, structural and services coordination.

The model provides spacial awareness and will assist LSE with space planning and benefactor engagement. It has been central to our recent presentations.

Safety first. Second nature.