


Who to contact

We are always keen to improve our relations with our neighbours and those affected by our works and would welcome any suggestions you may have. If you have any queries or would like to know more please contact us.

Please contact us via our  24/7 helpline: 0845 602 5761— please quote: 34053



Ushna Mughal
Community Engagement Manager
ushna.mughal@macegroup.com



Harish Raghvani
Construction Manager
harish.raghvani@macegroup.com



Darren Pope
Project Manager
darren.pope@macegroup.com

Environmental update

Energy



13,348
kWh of electricity used

100% was generated from a renewable source.

0

Litres of diesel used

Total kgCO₂/£100k emitted **0**

Waste



98%

Diverted from landfill

1.02 tonnes/£100k produced



This is below our target of 1.4 tonnes/£100k

Materials



100% of concrete, steel and plasterboard BES6001 certified sources



100% of timber from FSC^(C) certified sources

Key milestones

- January 2017**
Construction starts onsite.
- April 2017**
Piling works completed.
- June 2017**
Site welfare accommodation installed.
- July / Aug 2017**
Tower Cranes erected and basement excavation complete
- November 2017**
Superstructure works commence
- Jan / April 2018**
Concrete cores complete. External envelope in progress.
- Aug / Oct 2018**
Tower Cranes removed. Cladding complete
- December 2018**
Testing & Commissioning commences.
- April 2019**
Project build complete and soft landings commence.

Site operating hours

Monday to Friday 7:30am - 18:00pm

Saturdays 7.30am -13.00pm

The sites main operating hours above will ensure that any earth removal, piling work and mechanical building operations are confined to these hours. Outside these times there may be personnel on site; however their activities will be restricted so as not to disrupt the local community.

Mace project office: St Clements Lane, London, WC2A 2AB
Mace head office: 155 Moorgate, London, EC2M 6XB



THE LONDON SCHOOL
OF ECONOMICS AND
POLITICAL SCIENCE

In this issue:

Welcome to the seventh issue of the Centre Buildings Redevelopment community update.

This publication aims to keep you involved and informed of this project and the works we have planned over the next few weeks.

Headlines in brief:

- Site update
- Upcoming activities
- Who to contact
- Key milestones
- Site opening hours
- Community update



www.ccscheme.org.uk

Community update

LSE - Centre Buildings Redevelopment

March 2018



Site update and upcoming activities

Since our last update in January, you may have noticed that the strikingly colourful steel frame of the new buildings has substantially increased despite the recent weather conditions. In addition, over the last two months we have:

- Started constructing the façade of the two buildings. This involves the installation of the cladding brackets upon which the unitised cladding will be fixed.
- Progressed with the super-structure works which includes the precast concrete panels installation.
- Continued with the basement floor works including the blockwork and floor screeding.
- Commenced perimeter waterproofing to make the building weather tight.
- Advanced the mechanical, electrical and plumbing works throughout the buildings.

Over the next month we will:

- Start preparation works for the lift shaft installation.
- Commence basement and Level 1 mechanical, electrical and plumbing works.
- Begin dry lining the interior walls.
- Initiate the first phase of the joinery works.
- Install raised access flooring to create flexible space underneath the flooring for building services.
- Continue with the steel super-structure and concrete panel installation.

Mace has continued to work collaboratively with Portugal Street contractors including Wates, Multiplex, McGee and LSE to organise construction logistics that will minimise the effects of construction on our site neighbours. Thank you for your ongoing patience as we continue with these works.



LSE Centre Buildings Redevelopment video article

Please click on the photo below to watch Mace Project Director Frank Connolly's behind the scene interview for the university student publication "The Beaver".



Community update

University of Westminster visited the site team as part of their Construction Management module where Mace staff members invested their time and experience by supporting their syllabus.



Over the next year we will be working with our community partners to invest in the local community. These partners include:



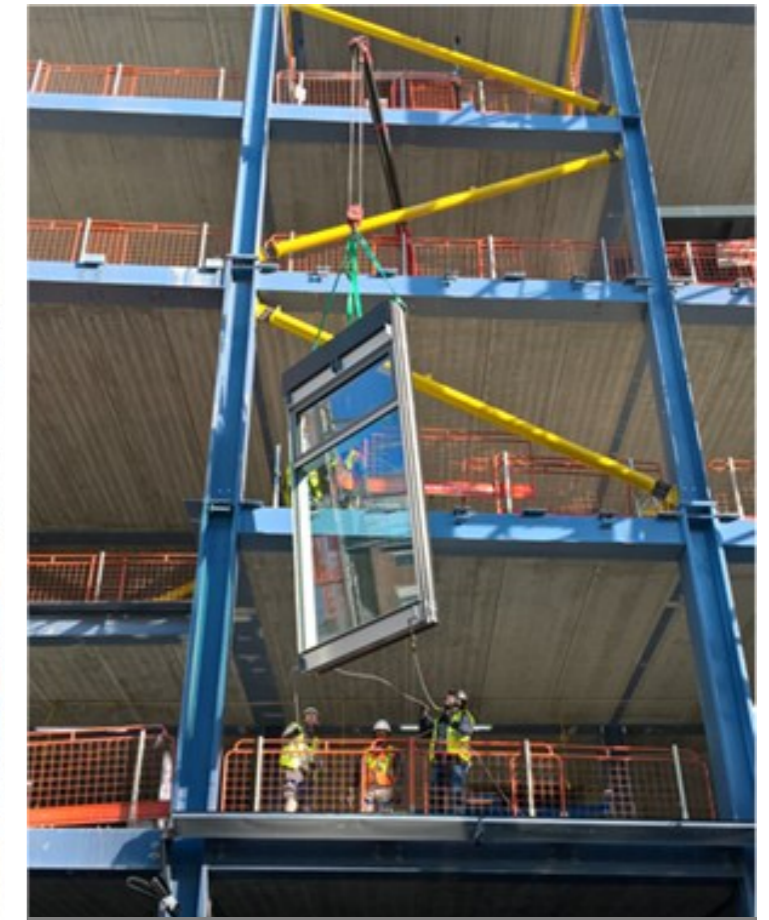
Social Enterprise UK

UNIVERSITY OF WESTMINSTER

Progress photos



1. Super-structure works progress



2. Cladding installation



3. Staircase installation



4. East core mechanical riser module installed