

Who to contact

We are always keen to improve our relations with our neighbours and those affected by our works and would welcome any suggestions you may have. If you have any queries or would like to know more please

Please contact us via our **24/7 helpline:** 0845 602 5761— please quote: 34053



Ushna Mughal
Community Engagement Manager
ushna.mughal@macegroup.com



Harish Raghvani
Construction Manager
harish.raghvani@macegroup.com



Darren Pope
Project Manager
darren.pope@macegroup.com

Environmental update

Certification **BREEAM**
Target Rating: **Outstanding**
Stage: **Design (Interim)**
Current Score: **81.30 %**
On track?

97% of waste has been diverted from landfill



100% of timber with FSC certification



100% of concrete, steel and plasterboard with BES6001



Key milestones

- January 2017**
Construction starts onsite.
- April 2017**
Piling works completed
- June 2017**
Site welfare accommodation installed.
- July / Aug 2017**
Tower Cranes erected and basement excavation complete
- November 2017**
Superstructure works commence
- Jan / April 2018**
Concrete cores complete. External envelope in progress
- Aug / Oct 2018**
Tower Cranes removed. Cladding complete
- December 2018**
Testing & Commissioning commences.
- April 2019**
Project build complete and soft landings commence

Site operating hours

Monday to Friday 7:30am - 18:00pm

Saturdays 7.30am -13.00pm

The sites main operating hours above will ensure that any earth removal, piling work and mechanical building operations are confined to these hours. Outside these times there may be personnel on site; however their activities will be restricted so as not to disrupt the local community.

Mace project office: St Clements Lane, London, WC2A 2AB
Mace head office: 155 Moorgate, London, EC2M 6XB



In this issue:

Welcome to the tenth issue of the Centre Buildings Redevelopment community update.

This publication aims to keep you involved and informed of this project and the works we have planned over the next few weeks.

Headlines in brief:

- Site update
- Upcoming activities
- Who to contact
- Key milestones
- Site opening hours
- Community update



www.ccscheme.org.uk

Community update

LSE - Centre Buildings Redevelopment

December 2018



Site update and upcoming activities

In our last bulletin of 2018 we can reflect on a very positive year here on the LSE Centre Buildings Redevelopment project. Over the past twelve months we have received exceptional Considerate Constructors Scheme scores, breaking the record across the industry by receiving the highest score of 48 out of 50 not once but twice. We have been nominated for Health, Safety & Wellbeing and Innovation Awards internally at Mace and more importantly, we have received some glowing feedback from our client the LSE for our works here at the CBR following end user tours.

Since our last newsletter we have made significant progress on site. We have removed the passenger and goods hoist as planned and energised two of our four lifts for vertical transportation of personnel and materials. The façade and roof works progress closer to their completion and internal fit out is making good headway including mechanical and electrical elements and Building Management System wiring. We have started works to cast the polished concrete floors and making final preparations for the commencement of our hard landscaping contractor.

In addition to these works we have progressed:

- Construction of office benchmark rooms in readiness for acoustic testing and sign off from LSE Estates
- Installation of the prefabricated rain screen and curtain wall systems and first fix works to terrace balustrades
- Roof waterproofing works including insulation and paving to specific areas
- Seminar Rooms and Lecture Theatres services and raised access flooring works
- Mechanical and electrical installation works throughout the building
- Atrium steel frame and glazing installation
- Plastering and first coat decorations

Over the next two months:

- Building mains power will be switched on
- Polished concrete works to Basement (including Under Floor Heating), Ground Floor and Alumni Centre will be completed
- Final fix services including lights, switches and sanitaryware will continue
- Commissioning of plant and systems will commence
- External works will start
- Internal pods, including reception unit will be installed
- Painting, carpets and ceiling acoustic baffles works will complete

We would like to take the opportunity to thank all of you for your continued support, and collaborative approach. We look forward to carrying this through seamlessly into 2019. Enjoy the holiday period and best wishes from the Mace LSE CBR team.



Community Engagement during 2018



On the 28th September we also got involved with Freshers' Week and met students and staff who joined in with some fun games, Snap Chat filters and selfie opportunities.

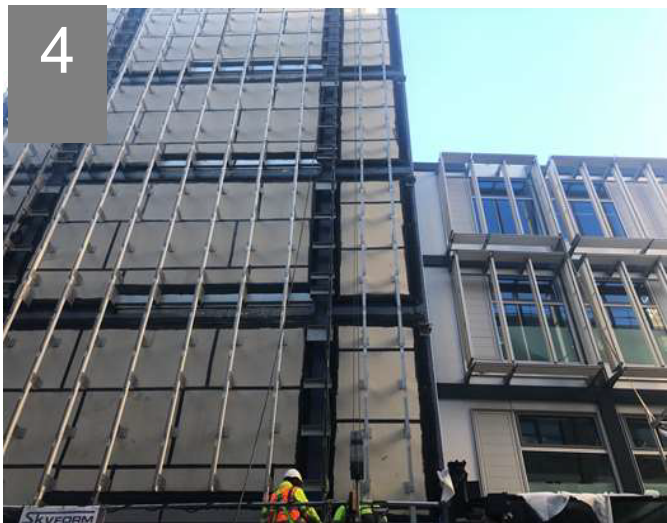
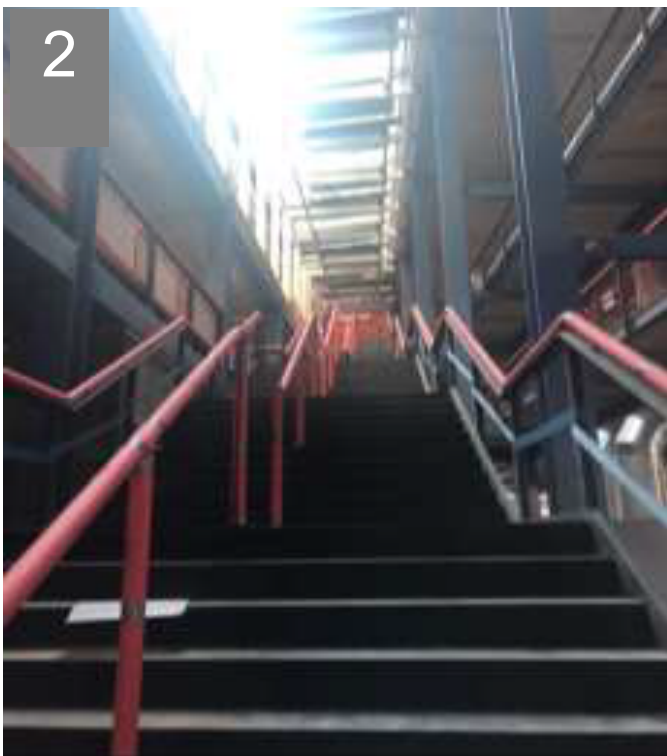
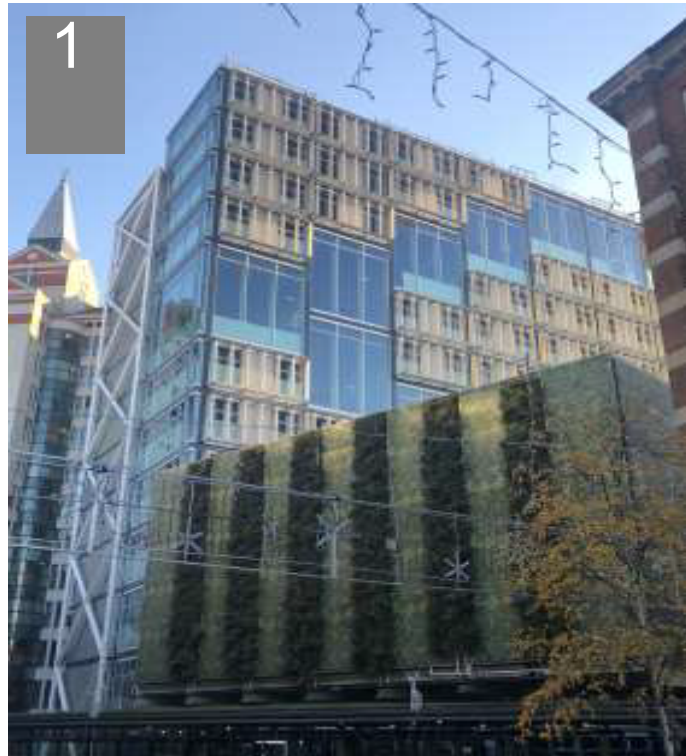


Charity events - Wear it Pink. The team got more than involved with the wear it Pink Campaign for Breast Cancer Awareness.



LSE Staff Tours – During the week commencing the 5th November we carried out LSE staff tours for over 120 people who will be occupying the building over floors 3-12. These went really well and feedback highly positive.

Progress photos



Photos:
1. West Elevation view from Library plaza
2. Atrium stair following scaffold removal
3. Coffee point level 3 (first fix)
4. South core rainscreen installation
5. Polished concrete works to Ground Floor main entrance area