

# Who to contact

We are always keen to improve our relations with our neighbours and those affected by our works and would welcome any suggestions you may have. If you have any queries or would like to know more please

Please contact us via our **24/7 helpline:** 0845 602 5761— please quote: 34053



Ushna Mughal  
Community Engagement Manager  
ushna.mughal@macegroup.com

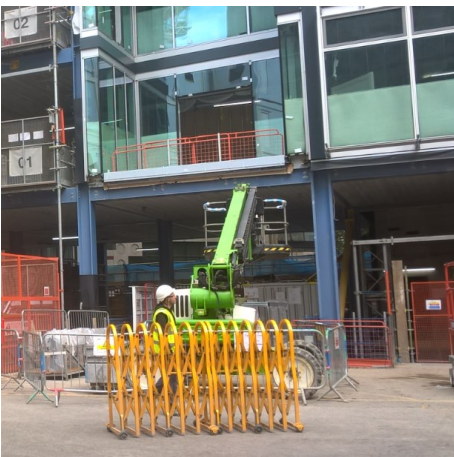


Harish Raghwani  
Construction Manager  
harish.raghwani@macegroup.com



Darren Pope  
Project Manager  
darren.pope@macegroup.com

# Environmental update



We are constantly reviewing the way we work in order to reduce the impact of construction works on our environment. Recently, a hybrid cherry picker was brought onto site to reduce the emissions in areas of pedestrian interface.

Whilst working on a project in Central London you are working in an area of higher pollution and lower air quality.

The benefits of using a Hybrid-cherry picker is to reduce the emissions from site machinery. Consequently, this reduces the CO<sub>2</sub> emission and allows more natural O<sub>2</sub> to arise within the surrounding area which is supported by the green wall installed on the LSE-CBR cabins.

# Site operating hours

Monday to Friday 7:30am - 18:00pm

Saturdays 7.30am -13.00pm

The sites main operating hours above will ensure that any earth removal, piling work and mechanical building operations are confined to these hours. Outside these times there may be personnel on site; however their activities will be restricted so as not to disrupt the local community.

# Key milestones

- January 2017**  
Construction starts onsite.
- April 2017**  
Piling works completed
- June 2017**  
Site welfare accommodation installed.
- July / Aug 2017**  
Tower Cranes erected and basement excavation complete
- November 2017**  
Superstructure works commence
- Jan / April 2018**  
Concrete cores complete. External envelope in progress
- Aug / Oct 2018**  
Tower Cranes removed. Cladding complete
- December 2018**  
Testing & Commissioning commences.
- April 2019**  
Project build complete and soft landings commence



# In this issue:

Welcome to the ninth issue of the Centre Buildings Redevelopment community update.

This publication aims to keep you involved and informed of this project and the works we have planned over the next few weeks.

## Headlines in brief:

- Site update
- Upcoming activities
- Who to contact
- Key milestones
- Site opening hours
- Community update



www.ccscheme.org.uk

# Community update

## LSE - Centre Buildings Redevelopment

October 2018



# Site update and upcoming activities

In readiness to welcome students back to the LSE and picking up from our last newsletter before the Summer break we bring you newsletter 9 to update all our stakeholders. Since the last bulletin we have removed, as planned both of our tower cranes and one of our hoists. This leaves only the Tower Hoist to distribute materials to all levels from Ground Floor upwards. We have also picked up where we left off with regards to the Considerate Constructor Scheme with a fantastic first visit (of 2018) score of 47/50 which provides a brilliant starting point for visit 2 later in the year. On the 6<sup>th</sup> July we also marked the completion of the main structure with a traditional Topping Out ceremony in glorious sunshine and in great company.

In addition to these works we have progressed:

- Installation of prefabricated unitised cladding systems and the curtain wall to form the façade to all elevations of the Tower and Houghton Building.
- Raised Access Flooring installation including interfacing works with low level Mechanical and Electrical installations
- Construction of office Seminar Rooms and Lecture Theatres
- Mechanical and electrical installation alongside the sprinkler and rainwater installation
- Installation of Lifts in the East core
- Completed perimeter drainage connections in Grange Court, New Inn Passage and Houghton Street
- Installation of the precast stairs to the south core
- Atrium Stair steelwork installation
- Installation of Tower Building BMUs (Building Maintenance Units)

Over the next two months we will:

- Remove the goods and passenger hoist from the Tower Building
- Commence commissioning of plant and systems
- Install high level mechanical and electrical works in the Atrium
- Install UKPN substation and network substation
- Power come on and lifts come online
- Spray plaster the walls throughout the buildings
- Progress with installation of ceilings
- Commence final fix services



Mace project office: St Clements Lane, London, WC2A 2AB  
Mace head office: 155 Moorgate, London, EC2M 6XB



# Community update



In July, the Centre Building Redevelopment Project (CBR) topped out with a sunny ceremony, marking the completion of the main structure.

The project team and clients celebrated this milestone by tightening the final bolts, complete with ceremonial wrenches.



Mace Foundation has awarded the LSE team a charity donation after achieving the highest Considerate Constructors Scheme score of 47/50. The LSE team awarded the sum to the Lighthouse Club - the only charity that provides financial and emotional support to the construction community and their families. Furthermore, the team organised a Hog Roast on site to compliment our Mental Health Awareness initiatives on site. We also took the opportunity to promote the CCS and Lighthouse Club with a Sponge the Manager (for a donation) event featuring Ivor and Honor Goodsite life size cut outs.



We were delighted to welcome back Gordon Bennett to the LSE site after 64 years. The Land Registry building, now 32LIF was Gordon's first job as a newly qualified engineer. Gordon's daughter, Catherine Bennett now works at LSE and organised a tour for him through the Mace team.

"Thanks once again for arranging the tour, Dad had a fantastic day, he really enjoyed both being on site, and the opportunity to talk technical stuff. It brought me such joy to see him back in his element, and back on site at LSE after 64 years."-Catherine Bennett

# Progress photos



1. Tower Building view August 18 – West elevation



2. LSE CBR Tower Building view Sept 18 – East elevation



3. LSE CBR Tower Building view from level 2 Roof Terrace Sept 18 – South elevation



4. Atrium staircase steel work installation



5. Tower Crane 1 removal – Main jib removal with a mobile crane.