


Who to contact

We are always keen to improve our relations with our neighbours and those affected by our works and would welcome any suggestions you may have. If you have any queries or would like to know more please contact us.

Please contact us via our  24/7 helpline: 0845 602 5761— please quote: 34053



Ushna Mughal
Community Engagement Manager
ushna.mughal@macegroup.com



Harish Raghvani
Construction Manager
harish.raghvani@macegroup.com



Darren Pope
Project Manager
darren.pope@macegroup.com

Upcoming activities

Over the next two months we will:

- Set up a logistics area on site by constructing a top down slab above the existing plate girders.
- Commence the substructure works. This will involve constructing the core of the building and we will start with the lift pits.
- Erect Tower Crane 1 and 2 to facilitate all construction activities on site.
- Install welfare units on site and start fitting out the cabins.
- Build a green wall on our new welfare facilities on St Clement's Lane to enhance the air quality within the area.
- Progress with excavation of Level 1 basement, after which we will install temporary works to enable the excavation of basement Level 2 area.
- Construct the visual mock up.

We will keep you informed as we progress with these works but please don't hesitate to get in touch if you have any comments or queries.

Site operating hours

Monday to Friday 7:30am - 18:00pm

Saturdays 7.30am -13.00pm

The sites main operating hours above will ensure that any earth removal, piling work and mechanical building operations are confined to these hours. Outside these times there may be personnel on site; however their activities will be restricted so as not to disrupt the local community.

Key milestones

- **January 2017**
Construction starts onsite.
- **April 2017**
Piling works completed.
- **June 2017**
Site welfare accommodation installed.
- **July / Aug 2017**
Tower Cranes erected and basement excavation complete
- **Jan / April 2018**
Concrete cores complete. External envelope in progress.
- **Aug / Oct 2018**
Tower Cranes removed. Cladding complete
- **December 2018**
Testing & Commissioning commences.
- **April 2019**
Project build complete and soft landings commence.

Mace project office: Kings Chambers, Portugal St London WC2A 2HF

Mace head office: 155 Moorgate, London, EC2M 6XB



In this issue:

Welcome to the second issue of the Centre Buildings Redevelopment community update.

This publication aims to keep you involved and informed of this project and the works we have planned over the next few weeks.

Headlines in brief:

- Site update
- Upcoming activities
- Key milestones
- Who to contact
- Site opening hours



www.ccscheme.org.uk

Community update

LSE - Centre Buildings Redevelopment

May 2017



Site Update

We are delighted to report that the construction works on the Centre Buildings Redevelopment project are progressing well. Since our last update, the project has reached the following milestones:

- Completion of the LDA piling works.
- 90% of the capping beam installation has been completed.
- Commencement of the bulk excavation to form the basement.
- Successful installation of plate girders
- Temporary works installed to Grange Court elevation.
- Commencement of works to set up a new site welfare facilities area for our operatives on St Clement's Lane. We are currently carrying out foundation works after which we will be installing a steel gantry.



Key facts



The wheel wash, designed and installed at the LSE Centre Building to recirculate the water, will

save 260m³

of water during the project.

This is equivalent to **261,400 litres !**

or

1 million bottles of water



250,000

more than consumed at the London marathon!



Progress photos



The LDA piling rig being dismantled

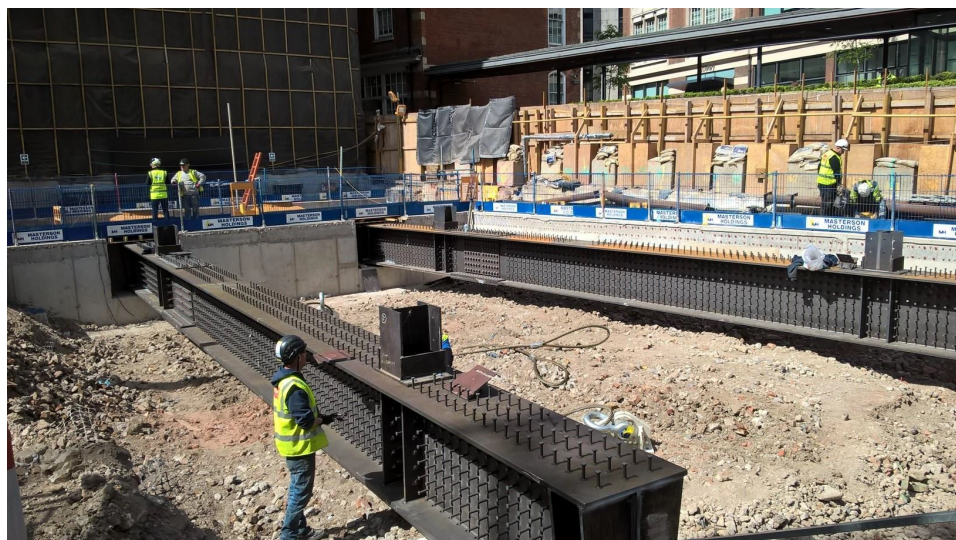


Plate Girders installed



Falsework to plate girder beam



Panoramic view of the site



Top down construction - zone 1



New Inn Passage capping beam