



LONDON SCHOOL OF ECONOMICS AND POLITICAL SCIENCE

The Old Building Refurbishment & Electrification Newsletter

Dear Colleagues,

This newsletter provides an update on the Old Building Refurbishment & Electrification project and associated service shut-downs and mitigation measures.

Inside this issue:

Old Building Link Bridge Removal Update

Estates Division

Old Building Link Bridge Removal

Works progress update and planned disruption in the period from 5 August to 12 August 2023:

Demolition works to the link bridge on Clare Market will begin on **5 August 2023** and complete **12 August 2023**. There will be no demolition works to the link bridge on **8 August 2023** to accommodate Summer School's planned examinations.

The demolition works will include the removal of the windows, roof, walls and concrete floor to the link bridge. These works will be intrusive and will create noise due to the breaking of the concrete base with the use of pneumatic tools, but will endeavour to keep impactful works to out of hours.

Weekday works will be done in accordance with LSE Noisy Works Policy. Saturday works will be done in accordance with Local Council Noise Restrictions.

Summary Timeline

- **Saturday, 5th August 2023**— Local Council Noise Restrictions apply.
- **Monday, 7th August 2023**— LSE Noisy Works Policy apply.
- **Tuesday, 8th August 2023**— No Works due to Summer School Examinations.
- **Wednesday, 9th August 2023**— LSE Noisy Works Policy apply.
- **Thursday, 10th August 2023**— LSE Noisy Works Policy apply.
- **Friday, 11th August 2023**— LSE Noisy Works Policy apply.
- **Saturday, 12th August 2023**— Local Council Noise Restrictions apply.

LSE Noisy Works Hours

- 8 AM to 10 AM
- 12 PM to 2 PM
- 4 PM to 6 PM

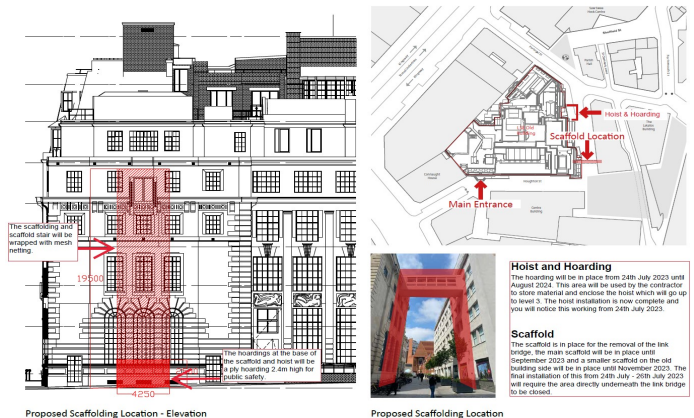


Fig. 1—Hoist and Scaffold Locations In Clare Market

Reporting Issues:

If staff or students have queries or concerns please report this via the Estates Helpdesk at Estates-Help-Desk@lse.ac.uk and the team will aim to prioritise these areas.

If you have any queries about the upcoming works please contact:

Francesco Biancelli— Principal Project Manager: f.biancelli@lse.ac.uk

Kenneth Kinsella—Director of Capital Development: k.kinsella@lse.ac.uk

Yours sincerely 
 Director of Capital Development