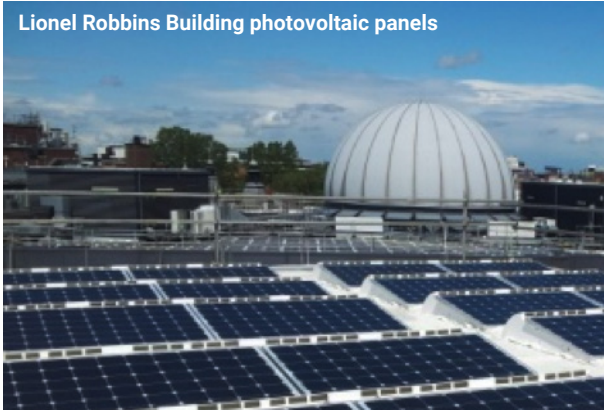


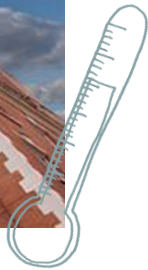
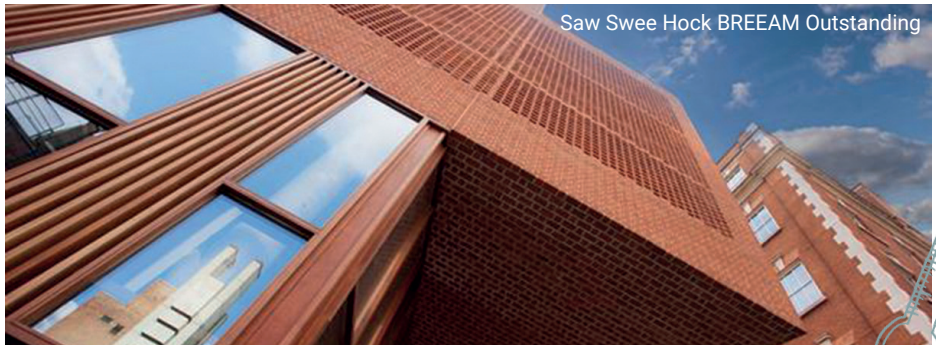
# CARBON MANAGEMENT REPORT 2018-19



Lionel Robbins Building photovoltaic panels



Saw Swee Hock BREEM Outstanding



**LSE is strongly committed to environmental sustainability, and it is a key principle of both our LSE 2030 Strategy and Ethics Code.**

The School has committed to be net zero on greenhouse gas emissions by 2050.

This includes all direct and indirect emissions occurring from energy use, water, waste, travel and procurement.



LSE is already working towards achieving net zero emissions by 2030 for our fuel and electricity usage.

100% of our electricity already comes from renewable sources.



### Baseline data:

LSE total footprint (scope 1 and 2) for the baseline 2005-06 was 13,170 tonnes of carbon dioxide equivalent (tCO<sub>2</sub>e).

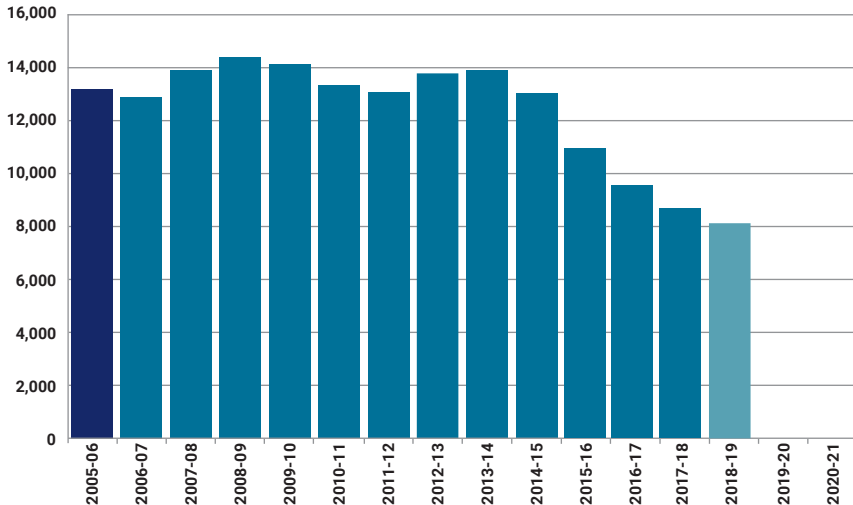


### Current footprint:

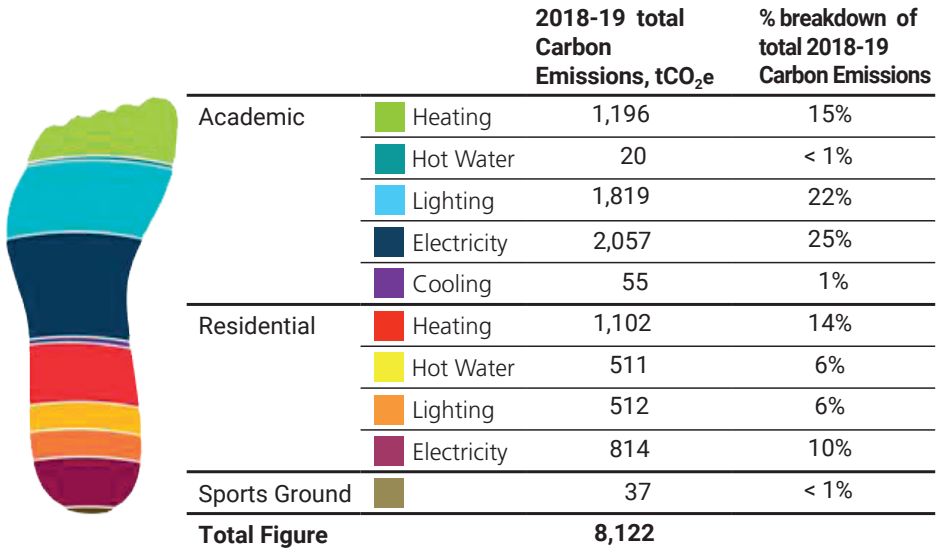
LSE carbon footprint for the most recent academic year 2018-19 was 8,122 tCO<sub>2</sub>e. This represents a 38% decrease from the 2005 baseline.

2018-19 carbon footprint decrease is mainly the result of the School ongoing RE:FIT programme, an energy saving programme supported by the Mayor of London. The decarbonisation of the grid also contributed to the decrease.

### Carbon Emissions (tCO<sub>2</sub>e):

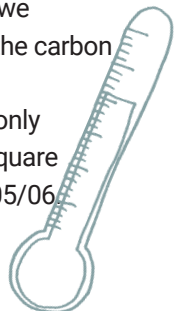


## Total footprint by energy use:



## In 2018-19, LSE made significant progress towards its carbon reduction target.

- We completed all 3 Tranches of RE:FIT. Working with Bouygues, we invested over £4.8 million in energy conservation measures such as energy efficient lighting, boilers, photovoltaic panels and improved building controls. The measures helped LSE to reduce its carbon footprint by nearly 20%. It also helped us achieve maintenance savings and increase our building efficiency.
- Photovoltaic panels and Combined Heat and Power units continue to produce energy for our estate, saving 276 megawatt-hours of electricity and 71 tCO<sub>2</sub>e in 2018-19. This is enough to power Lincoln Chambers for a year.
- Thanks to these projects, we have significantly reduced the carbon intensity of our estate: in 2018-19 we produced only 40 kilograms of CO<sub>2</sub>e per square meter, a 50% cut since 2005/06.

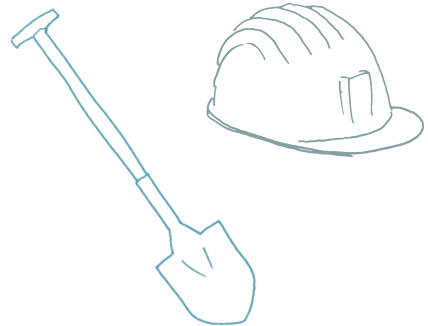




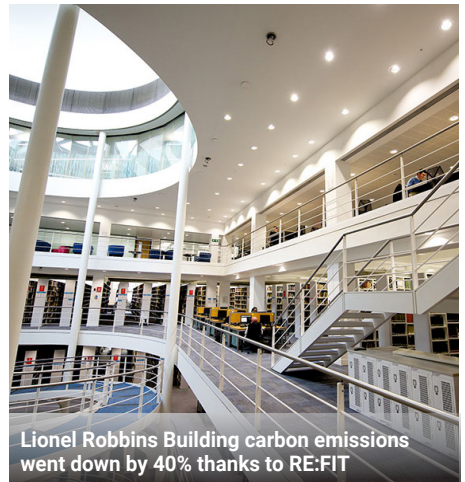
## CONTINUING PROGRESS

**Guided by the Carbon Management Plan, LSE plans to further reduce its carbon footprint:**

- We are consulting with our Community to shape our new Sustainable Strategic Plan for 2030. A wide range of issues are being discussed, from carbon offsetting to reducing our emissions from air travel and catering.
- We will continue improving our building environment by ensuring all new construction and refurbishment projects have the lowest possible environmental impacts. Notable examples are the Centre Building and Saw Swee Hock that both achieved BREEAM 'Outstanding'.
- Student and staff engagement will continue to be one of our priorities. We are expanding the University of London "Reduce the Juice" programme to cover all eight centrally managed halls of residence, targeting energy, waste and water reduction.



New Academic Building carbon emissions were reduced by 49% thanks to new controls and lighting



Lionel Robbins Building carbon emissions went down by 40% thanks to RE:FIT