



CONTEXT



Undercroft of Lincoln's Inn Chapel



Gateway to Lincoln's Inn Library and Hall



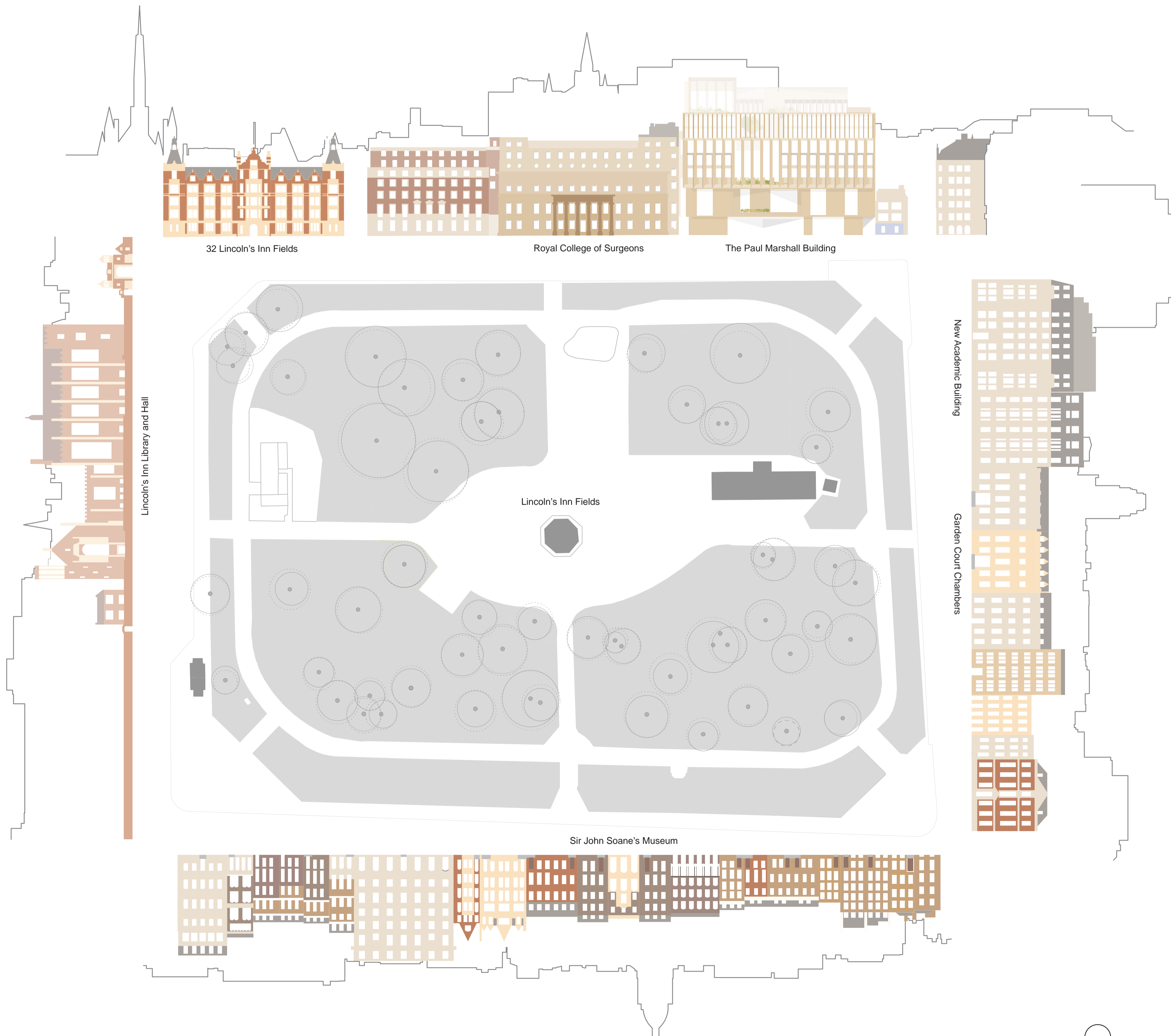
Lincoln's Inn Fields



Garden Court Chambers



Sir John Soane's Museum



Unfolded contextual elevation of Lincoln's Inn Fields

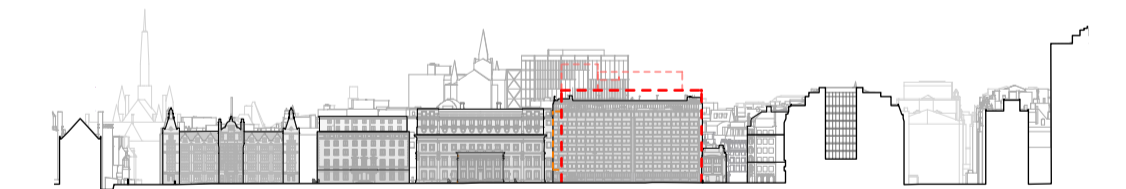
CONNECTING WITH THE CONTEXT

The square form of Lincoln's Inn Fields is what binds the diversity of buildings that encapsulate it as each of the four sides has quite different qualities and varied levels of enclosure. To the East is Lincoln's Inn with half building, half landscape. To the North is the scale of the urban terrace of houses. To the west, a variety of public and commercial uses. On the South edge are the town mansions, some detached, some semi-detached, with gated forecourt spaces..

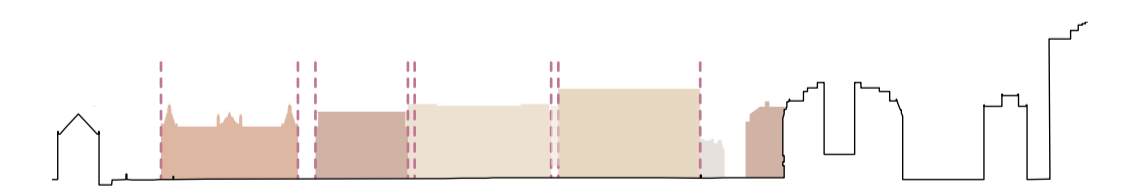
The existing buildings form an edge which has a rich tapestry of materials, scales and epochs, reflecting the architectural development and history of the square. The backdrop to the facades are the towers spires, chimneys stacks that create the rich landscape of the London skyline.

A detailed measured analysis of the buildings on four sides of Lincoln's Inn Fields in terms of heights, established that there is no continuity of height lines but the building heights rise from east to west towards Kingsway. This analysis was important to establish a comfortable height for the new building in its context. The scheme proposes eight and nine storeys above ground at its highest points with a further floor of mechanical plant on top of both the eighth and the nine storeys.

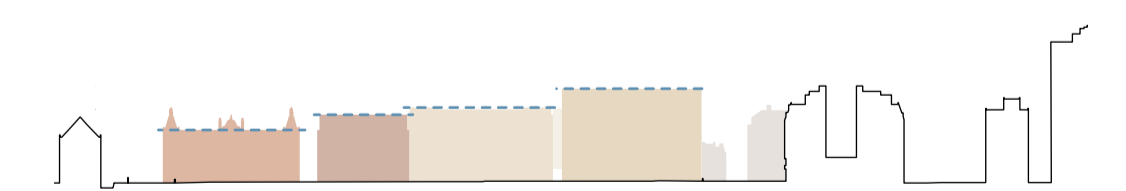
The existing buildings fronting Lincoln's Inn Fields on the southern side detach themselves from their neighbours like a series of palazzos, as does the new LSE building which follows this pattern and is detached at ground level.



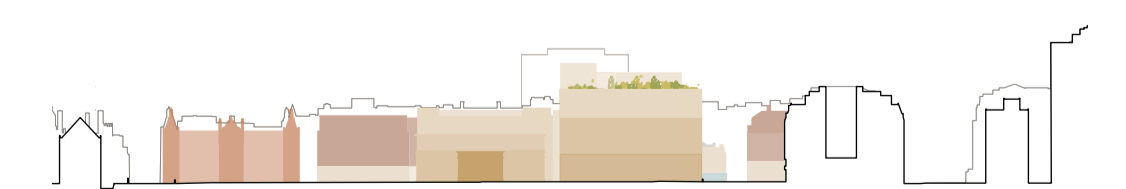
Existing elevations along Lincoln's Inn Fields South



Gaps and breaks between existing buildings



Heights increasing along Lincoln's Inn Fields South, from east to west



Variety of materials and expression of existing and proposed building

