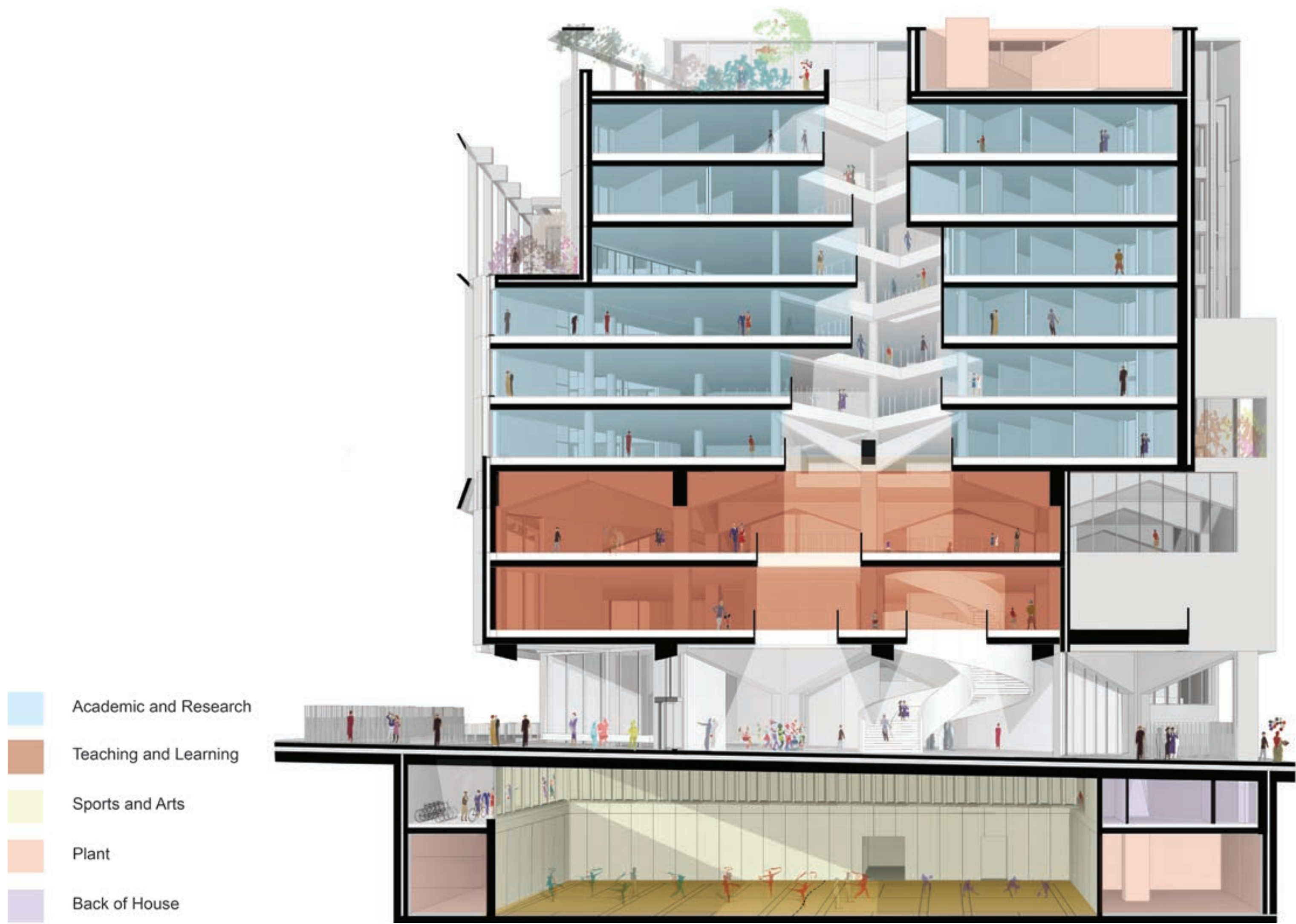
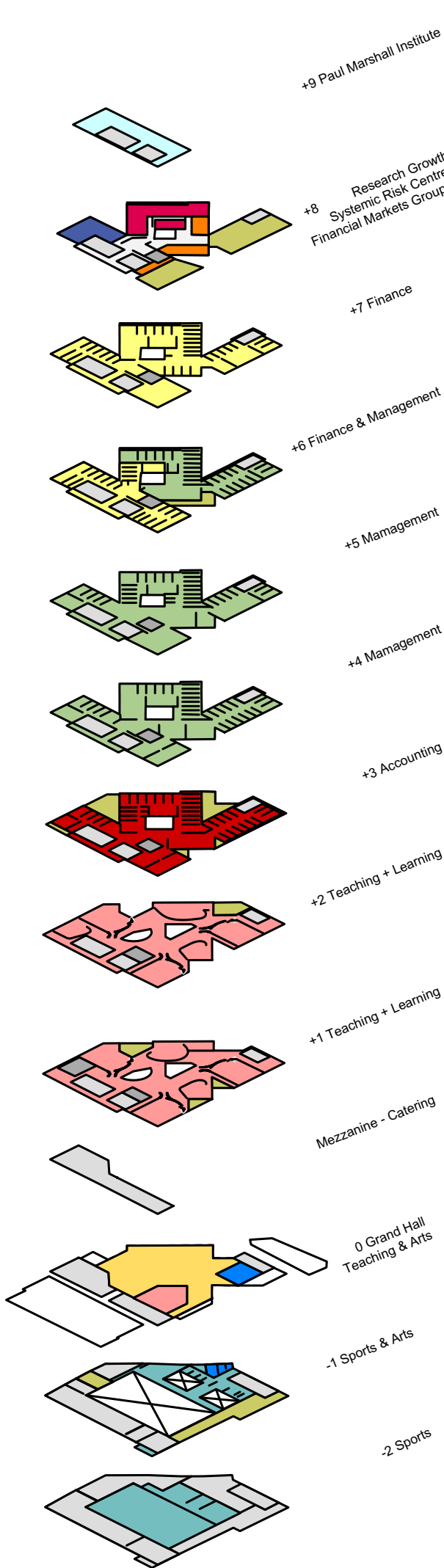




HOW THE BUILDING FUNCTIONS



Perspectival section showing the strata of the different functions



Proposed uses distribution

INSIDE THE BUILDING

The current scheme is laid out over twelve levels including ground level and two levels below ground.

The main entrance and public floor is situated on the Ground floor. Teaching levels are located on levels one and two.

Academic departments and research centres are accommodated on levels three to eight inclusive. The Paul Marshall Institute is situated on level nine.

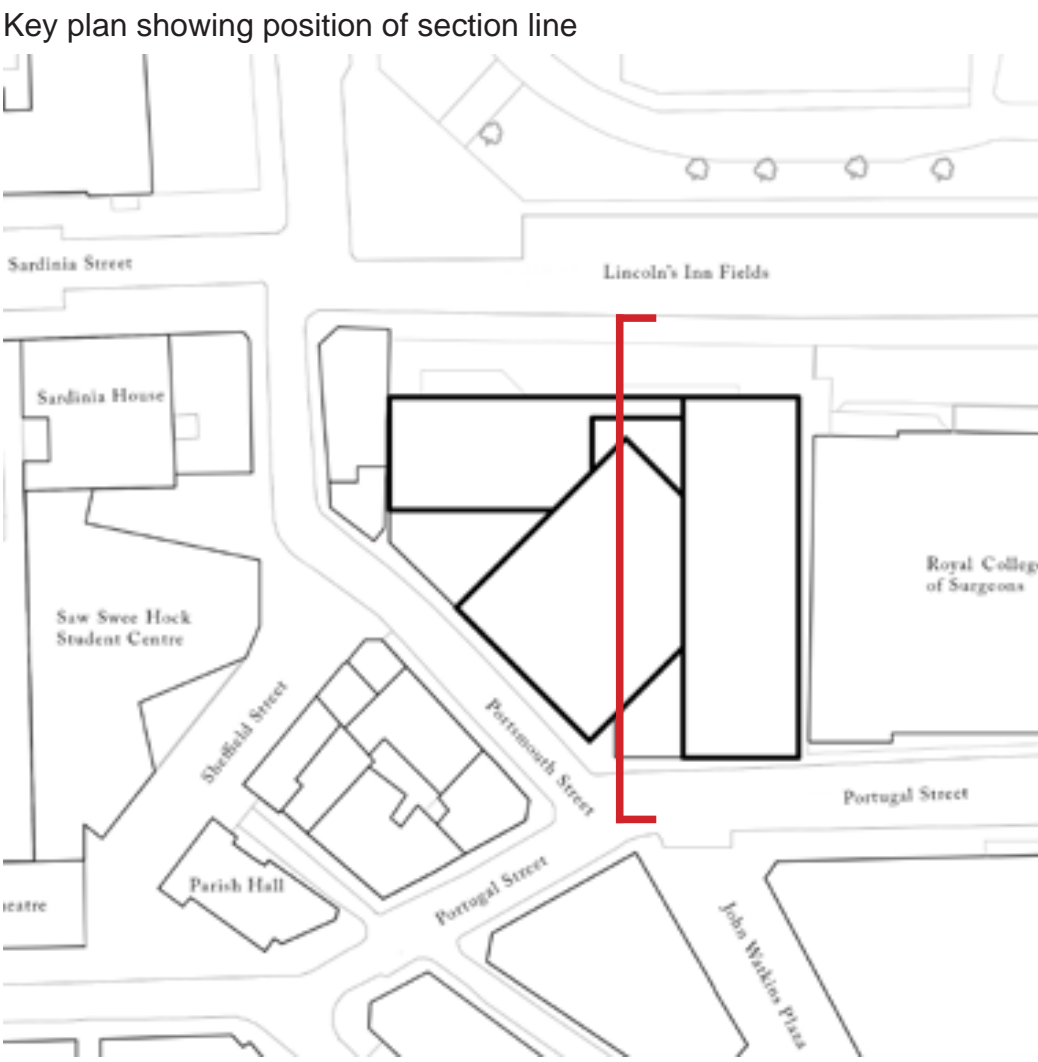
The basement over two levels contains the student facilities including, sports, arts rehearsal and changing spaces.

Back of house facilities are situated primarily in the basement levels and on the ground floor itself. These are orientated towards the service access lane running north/south adjacent to the boundary with the Royal College of Surgeons. The hospitality kitchen is located in the mezzanine over part of the ground floor.

The stacking diagram illustrated here is indicative as detailed design continues.



Contextual section - scale 1:500



graffon architects