



44 LINCOLN'S INN FIELDS
The Paul Marshall Building

A NEW LANDMARK BUILDING



Existing view approaching 44 LIF from Sheffield Street

View from Sheffield Street

A double height entrance addresses the important axis of Sheffield Street making a clear connection with the Saw Swee Hock Student Centre.



Existing view approaching 44 LIF from John Watkins Plaza

View from John Watkins Plaza

The entrance is on an axis with John Watkins Plaza and forms an important connection to the LSE Library and the Centre Buildings redevelopment project.

BUILDING IN THE ROUND

The rotating forms adjust and adapt to the geometry of the site and to the more fractured nature and pattern of the streets to the south of the site while maintaining a more unified formal expression onto Lincoln's Inn Fields.

The form of the building is modulated and adjusted so as to form elegant junctions with neighbouring buildings including the Old Curiosity Shop. It opens up to create connections to Sheffield Street and to John Watkins Plaza in particular.

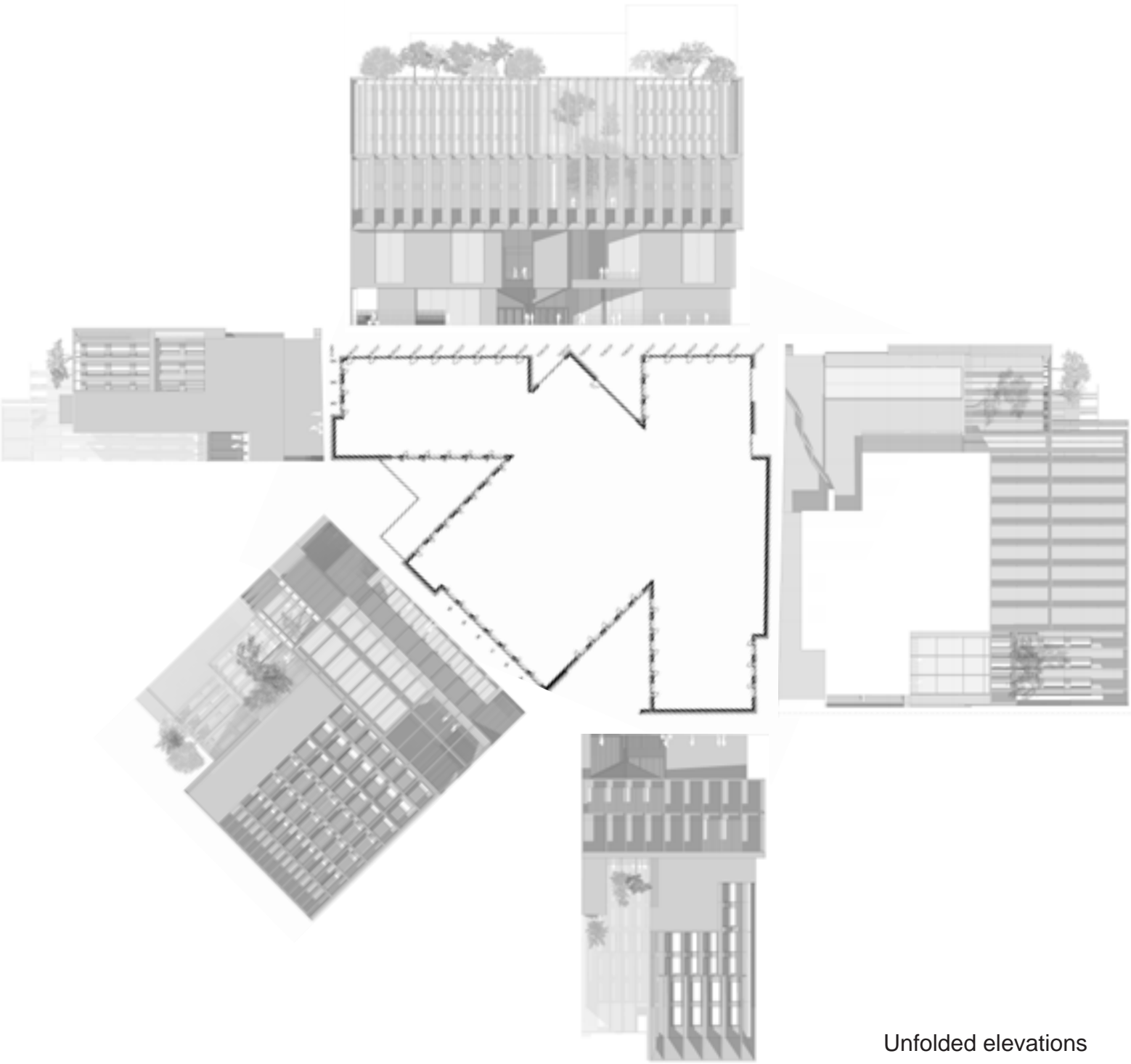
Entrance doorways, screened terraces and gardens, solid gables, rhythm of windows and screens all come together to form a unified dynamic form.



View from Sheffield Street

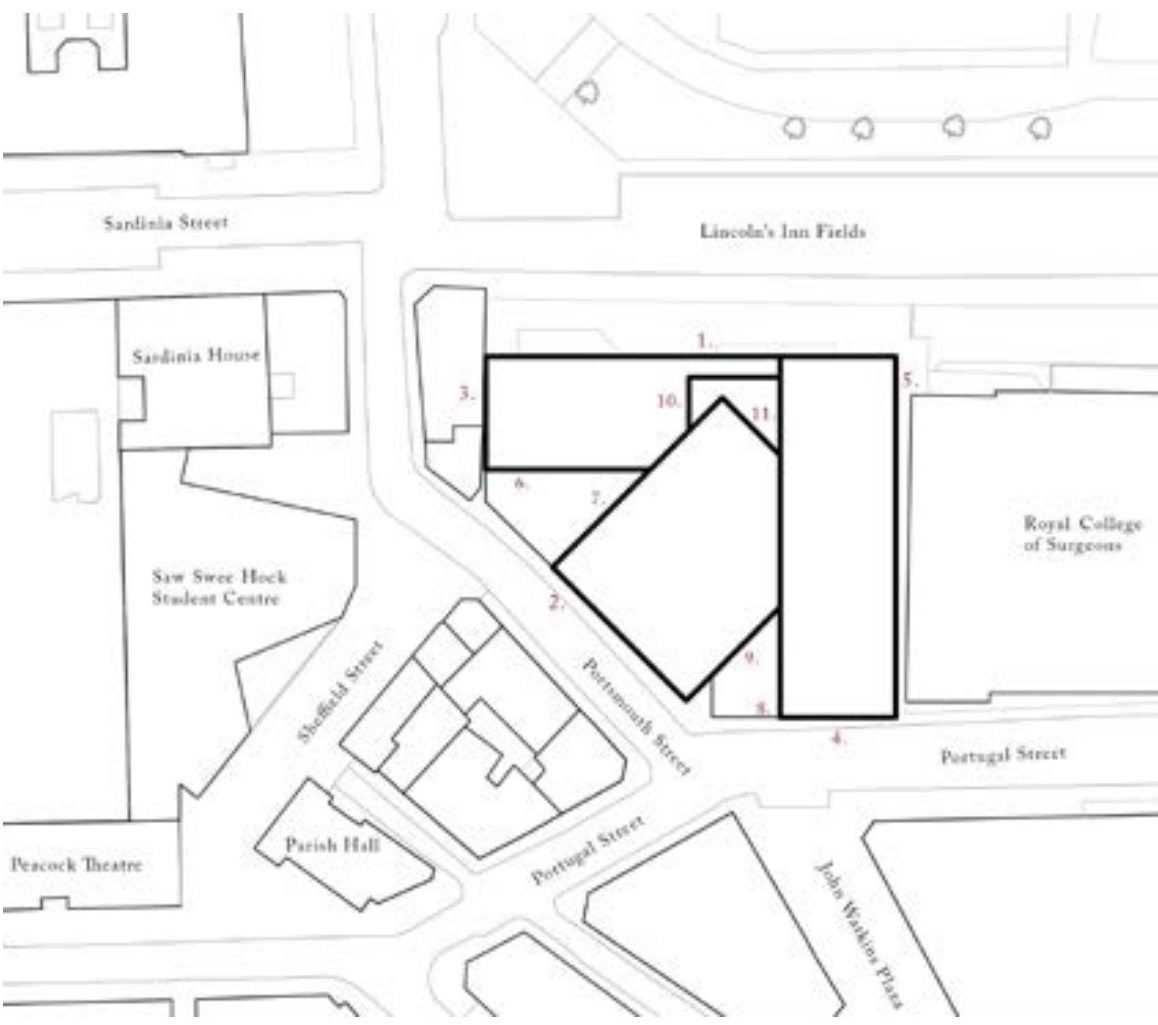


View from John Watkins Plaza



Unfolded elevations

- Facade Key
- 1. North West Facade
Lincoln's Inn Fields
 - 2. South West Facade
Portsmouth Street
 - 3. West Facade
Portsmouth Street
 - 4. South Facade
Portugal Street
 - 5. East Facade
Royal College of Surgeons
 - 6. Curiosity Courtyard | 01
 - 7. Curiosity Courtyard | 02
 - 8. Portugal Street Courtyard | 01
 - 9. Portugal Street Courtyard | 02
 - 10. Lincoln's Inn Fields Courtyard | 01
 - 11. Lincoln's Inn Fields Courtyard | 02



graffon architects