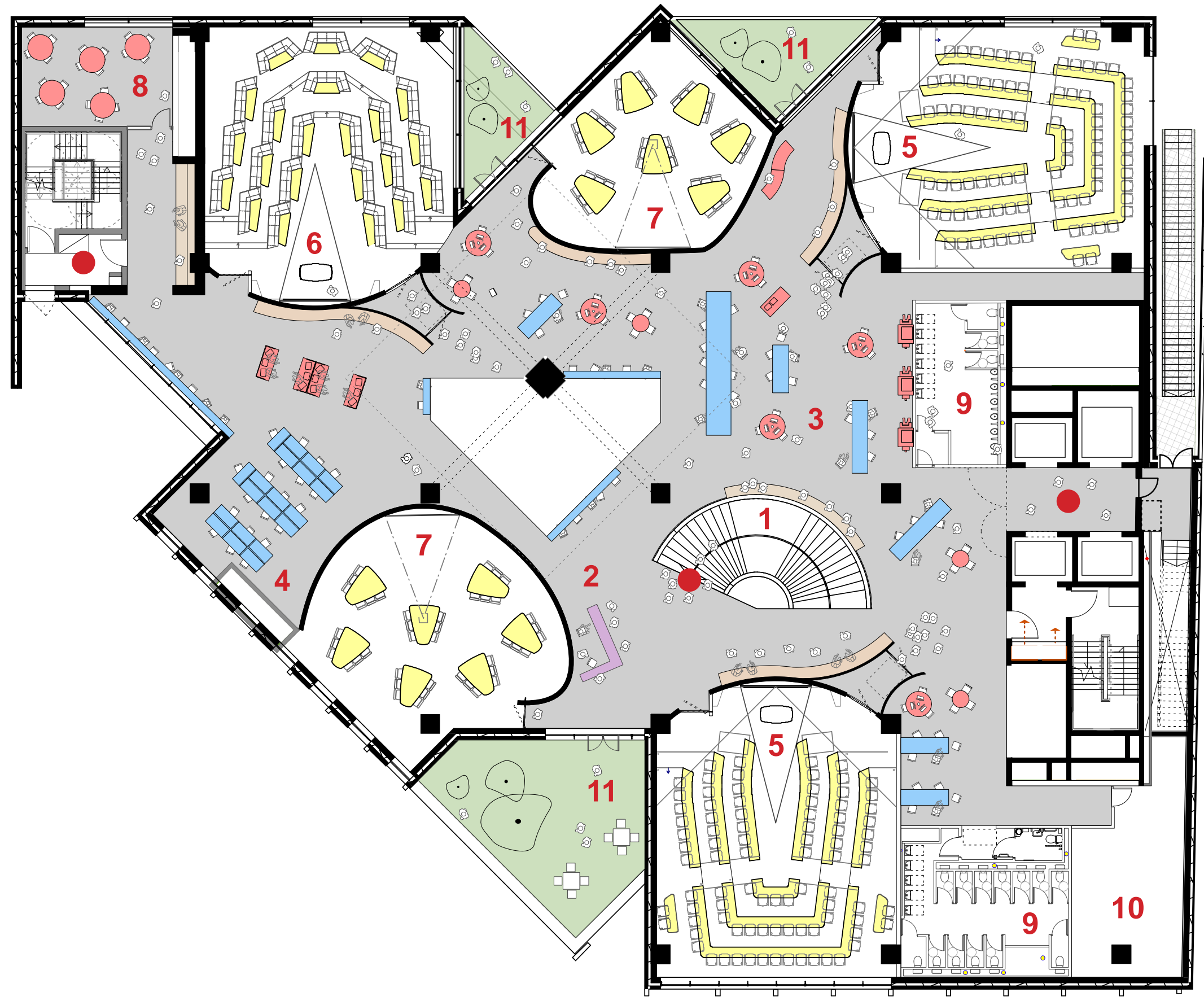




TEACHING AND LEARNING SPACES

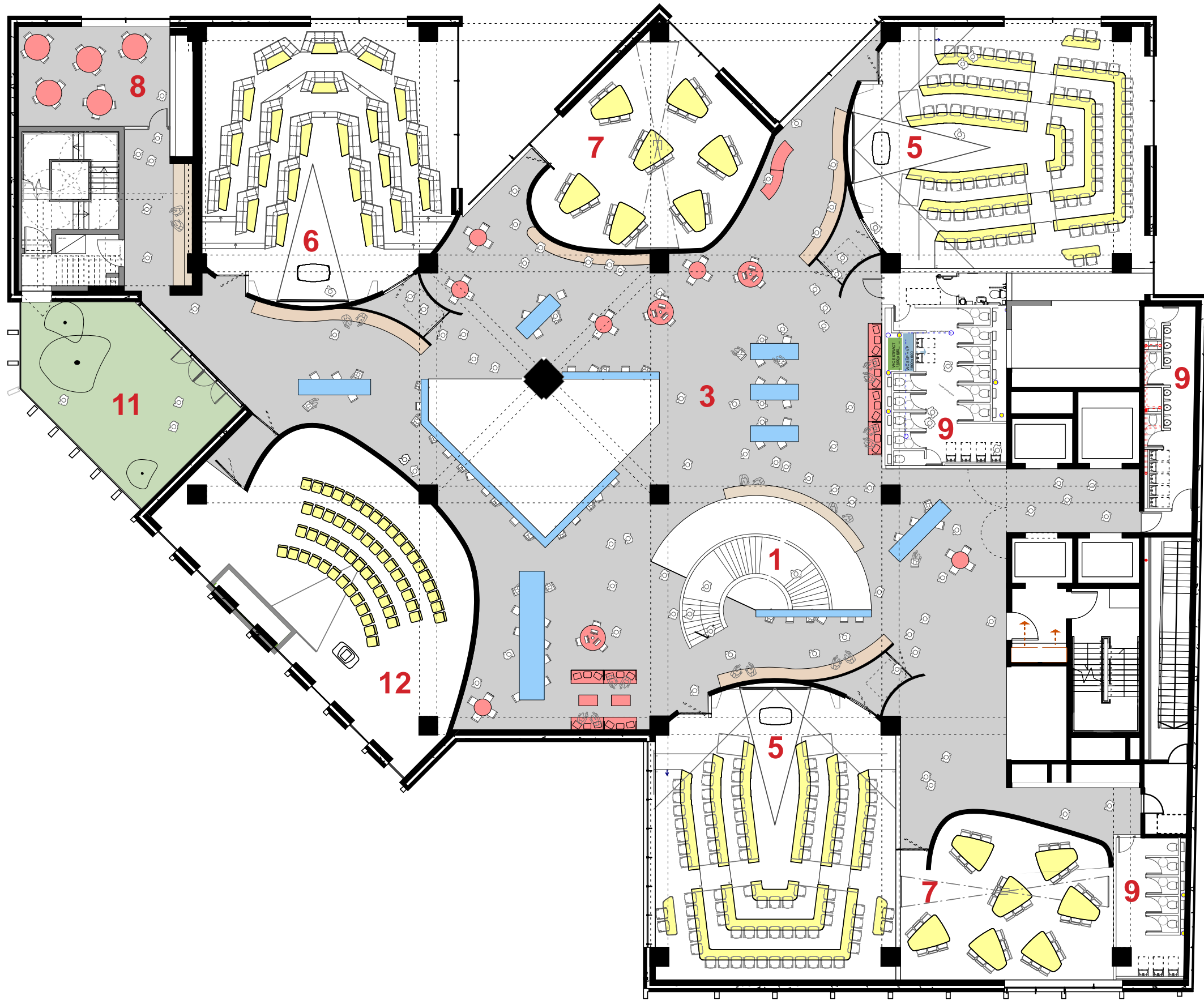
LINCOLN'S INN FIELDS



Plan of teaching level +1 - scale 1:200



LINCOLN'S INN FIELDS



Plan of teaching level +2 - scale 1:200



Legend

- 1 Grand staircases
- 2 Reception desk
- 3 Student commons
- 4 20 seater break out spaces
- 5 92 seater Harvard lecture theatre
- 6 88 seater Harvard connect lecture theatre
- 7 40 person classroom
- 8 Staff commons
- 9 Toilets
- 10 MER room
- 11 Terraces
- 12 Conference room
- Connections to the other floors

Teaching & learning spaces

Situated on the 1st and 2nd floors, the Teaching and Learning Hub embodies the vision and aspiration of the Paul Marshall Building 'to create beautiful and inspiring teaching spaces'. The spiral staircase gestures a grand welcome to students taking them seamlessly from the Grand Hall to the Teaching and Learning Hub on levels 1 and 2. On arrival they are greeted by views to the outside, to neighbouring buildings and beyond.

The provision of teaching rooms on the two floors reflects the ambitions of the School and is summarised below.

Type	No. of rooms
Classrooms 10 person	2
Classrooms 40 person	4
Raked Harvards 90 person	6

In addition there is a departmental seminar room holding 60 people on level 2 plus the large teaching on space on the ground floor. .

The detail of the design and layout of the teaching rooms will be developed further in consultation with LSE over the coming months. Illustrations here are proposals.

The atmosphere envisaged on teaching floors is one conducive to informal learning alone or in groups; a place where students want to be. This is achieved by the creation of small areas with a variety of different uses, cafe style seating, learning pods, high table seating and technology spaces where groups could gather.

grifton architects



View of the common spaces on the teaching level +2

Medical School,
University of Limerick, Grafton Architects



Auditorium, Solothurn, Switzerland, Studio Märkli

