



Marshall Building 44 Lincoln's Inn Fields

Meet the Contractor Event



LSE Estates Team

The LSE Team



Kenneth Kinsella

Director of Capital Development



Emma Lovegrove

Principal Project Manager



Tony Lobo

Senior Project Manager

Working with

Grafton Architects



chapmanbdsp

3PM | PORTFOLIO,
PROGRAMME AND
PROJECT MANAGERS

GT GARDINER
& THEOBALD



What are we developing?

The Marshall Building will be one of the most significant and important projects undertaken by the LSE in recent years.

The new building will provide approximately 18,100m² of new space, split over two basement levels and ten upper levels (including the ground floor). The building will provide a mixture of office, teaching and sports space, distributed across the building as follows:

- Levels B-2 and B-1 - Sports facility (including double height sports hall) music practice rooms, ancillary space and plant rooms.
- Level 0 (Ground) - Main entrance, Grand Hall and breakout area, performance space, ancillary circulation space and isolated teaching areas.
- Levels 1 and 2 - Teaching space (including ancillary support and breakout areas).
- Levels 3 to 9 - Academic offices (and ancillary support space), also Incorporating the Paul Marshall Institute.



What we have done so far

- Continued consultation with building occupants and users
- Completed building design
- Planning permission granted
- CRUK building demolished
- Raft slab constructed
- Main Contractor appointed'



Mace

Construction Partners

Safety first. Second nature.

About Mace



Mace is an **international consultancy** and **construction company**, offering integrated services across the full property and infrastructure lifecycle – giving clients the full benefits of the Mace approach, whatever the requirement.



VISION: To be the industry leader in helping to shape cities and build sustainable communities.

MISSION: To continuously pursue a better way



Safety first



Create opportunity



Integrity



Client focus

Mace Projects



The London Eye



The Shard of Glass



Olympic and Paralympic Park



Birmingham New Street



Emirates Air Line



THFC



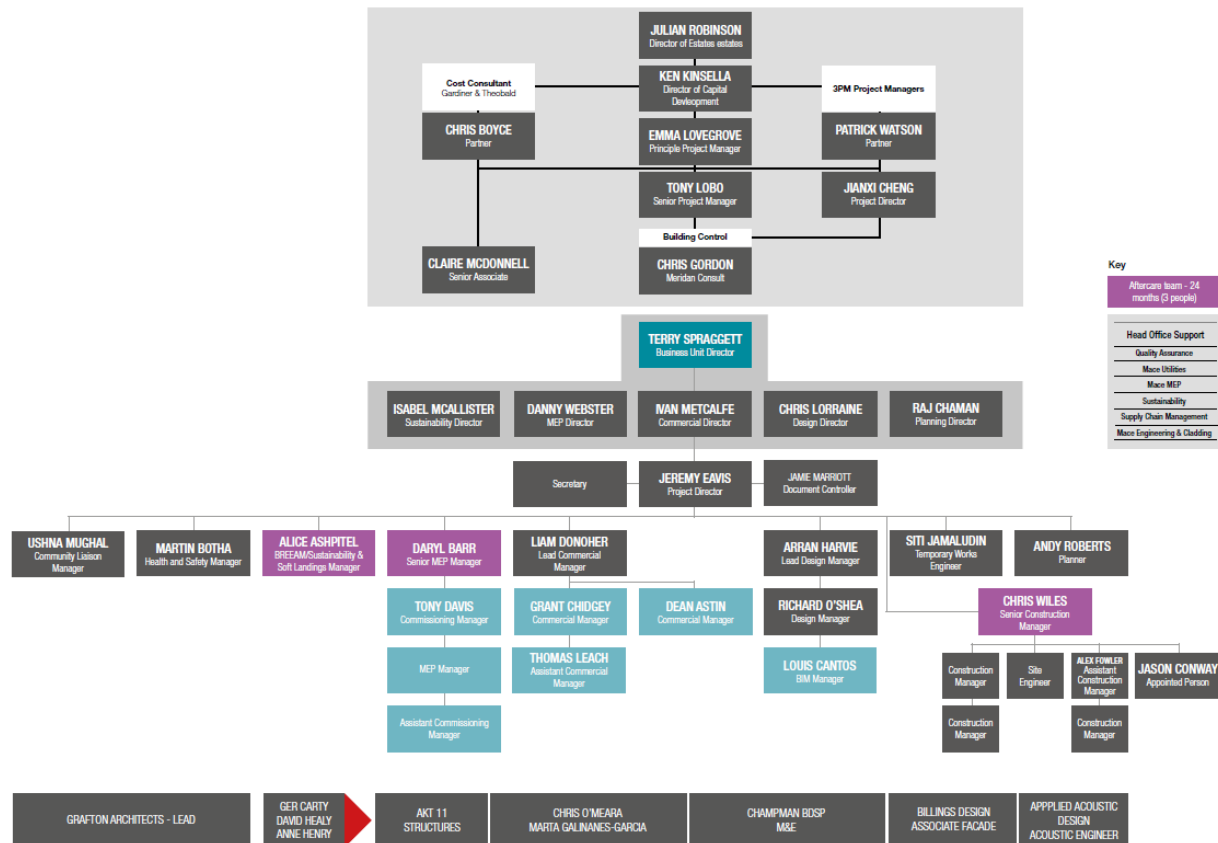
**Television
Centre**



LSE Centre Buildings

Project Overview

Safety first. **Second nature.**



Key Team Liaison Members



Jeremy Eavis
Project Director
Jeremy.Eavis@macegroup.com



Chris Wiles
Senior Construction Manager
Chris.Wiles@macegroup.com



Ushna Mughal
Community Engagement Manager
ushna.mughal@macegroup.com



Project role and responsibility



Jeremy Eavis

Mace Project Director

- Responsible for the delivery of the project
- Full time onsite
- Manages the site team and project team
- Manages the sub-contractors and designers
- Point of contact for our client
- Ensures safety, progress and quality are maintained.



Project role and responsibility



Chris Wiles

Mace Senior Construction Manager

- Full time on site
- Responsible for the presentation and management of the site
- Controls site works, vehicle movements etc with the sub-contractors
- Implements safe working procedures
- Monitors site progress
- Responsible for the welfare of the workforce
- Manages the progress, sequence, quality, and coordination of trades and construction on site



Project role and responsibility

Mace Community Engagement Manager

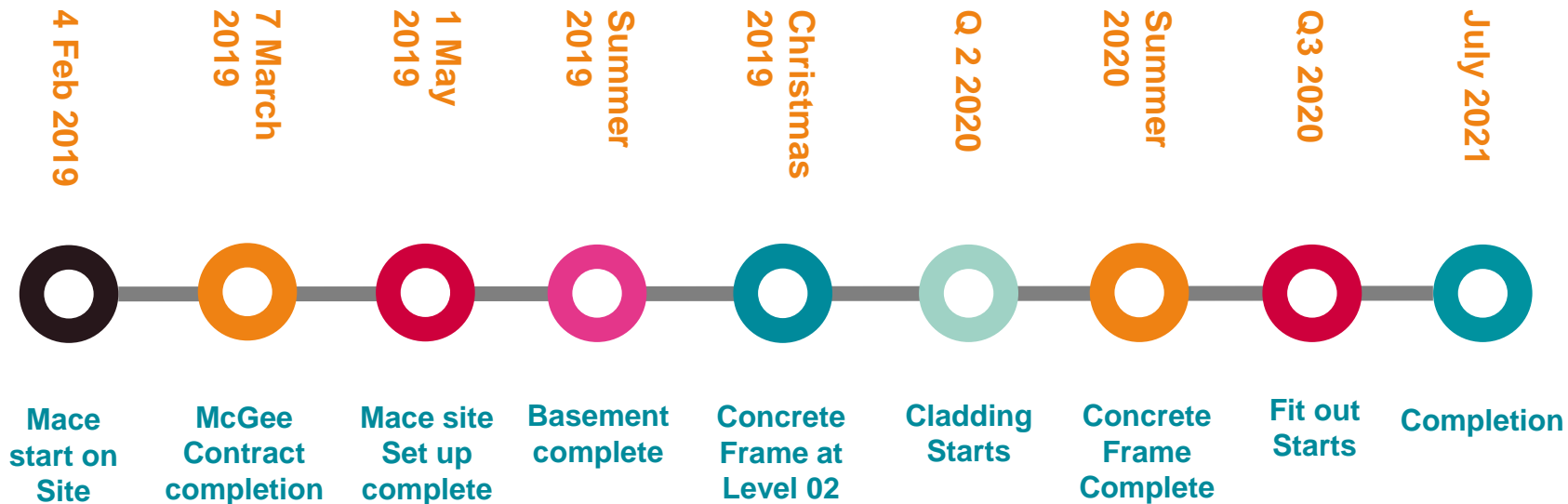


Ushna Mughal

- Responsible for communication between the site and the community
- Facilitating interaction between the site and interested parties
- Assisting the site team in the management of sensitive issues
- Leading on community events



Key Dates



Logistics

Safety first. **Second nature.**



Logistics

- **Portsmouth Street changes to one –way (south)**
- **Access controlled by Mace Logistics team**
- **Mace Vehicles will follow a one-way system**
- **Pit Lane off-loading On Lincoln Inn Fields, Portsmouth St and Portugal St.**
- **Muster point – corner of Lincoln Inn Fields**

Traffic Management



Traffic Management

- CLOCS
- Data Scope – web based delivery booking system
- Qualified Traffic Marshalls
- Certified Security Guards
- Exceptional deliveries outside normal hours with WCC approval



REJECT – VEHICLE CHECK

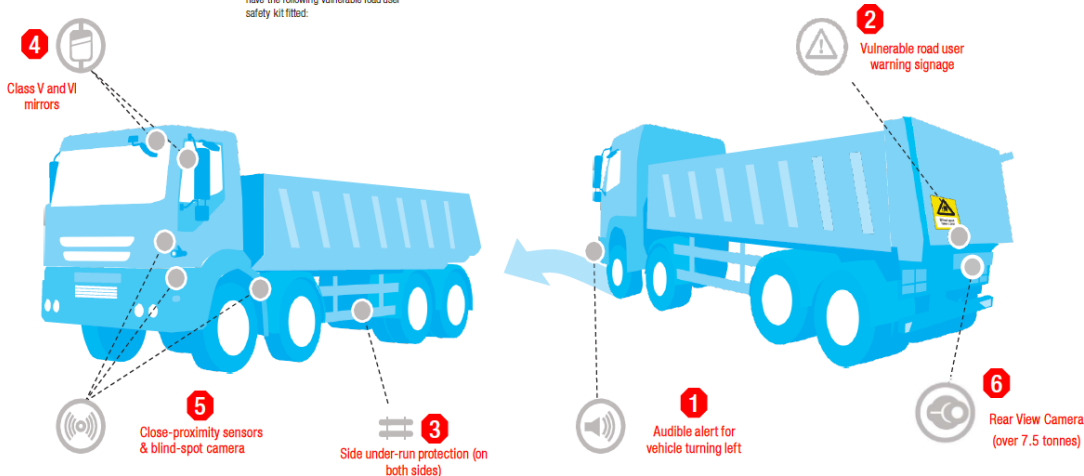
1. Audible alert for vehicle turning left
2. Vulnerable road user warning signage
3. Side under-run protection (on both sides)
4. Blind-spot minimisation Class V & VI Mirrors
5. Blind-spot minimisation camera system and/or Sensor System and/or Fresnel Lens
6. Rear View Camera (Vehicles over 7.5 tonnes)

If no to any of these requirements vehicle is Rejected and Yellow Jacket observation raised.

DRIVER CHECK

1. Do you have proof of qualification operation certification (FORS or equivalent)
2. Have you been provided with a traffic routing plan to this site by your employer.

Any vehicle over 3.5 tonnes gvw shall have the following vulnerable road user safety kit fitted:



Site Set Up

- Security provision
- First class welfare facilities
- Regular inspection and maintenance
- First impressions
- Keeping workforce on site

Lifting Management

- SMIE:- Electronic anti-clash and over-sailing device.
- Robust Lifting Plans
- Digital camera on hook block
- Scaffold fans
- Barriers and netting on leading edges

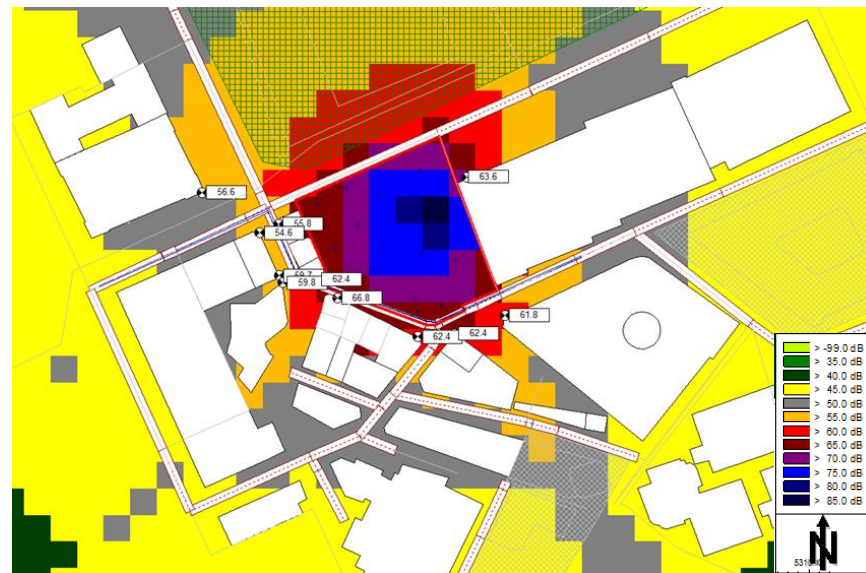


Noise, Dust, Vibration

- Receptors installed strategically
- Trigger and action levels set
- Automated Text alerts
- Reporting process established
- Efficient plant and equipment
- Pre-fabrication
- Further mitigation measures

Acoustic Mapping

- Mitigation measures
- Plant turned off when not in use
- Acoustic screening



Mace Identification Policy

- Hard Hat standards
- Names on hats
- Key identification



Supervisors of
work groups



Slinger /
signaller



All competent
workers and
managers
(SMSTS, CSCS, PTS
or relevant training)*



All visitors
or untrained
operatives and
managers
(SMSTS, PTS or
relevant training)

First aider



Fire marshal



Working at
height
(Petzl helmet)



Communication methods

Online Communication

Newsletters/e-alerts will keep stakeholders regularly informed. We will provide them with site operational hours, project timeline and who to contact if they have enquiries/complaints. We will also issue alerts to inform them of any unforeseeable circumstances that may affect them.

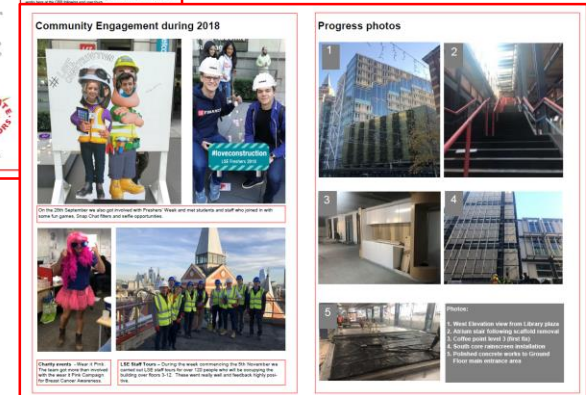
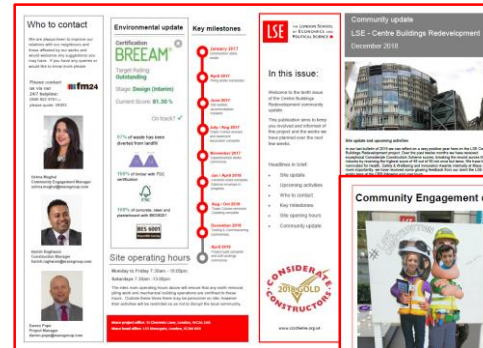
Alerts on TV screens around campus will allow us to give advance notice of upcoming works.

Website and Social Media:

- If you require further information please visit our web page: <https://info.lse.ac.uk/staff/divisions/estates-division/lse-estate/development-projects/the-marshall-building>
- Email questions or queries to estates.marshall@lse.ac.uk

Offline Communication

Site hoarding will be used to keep pedestrians informed with relevant site activities.



Working with the community



Cycle safety events



Site tours



Careers in Construction events

Considerate Constructor Scheme (CCS)

- The CCS is the national initiative, set up by the construction industry, to improve its image
- Mace are Partners of the scheme
- We are audited twice a year against a code of considerate practice
- Designed to encourage best practice beyond statutory requirements
- CCS is included in all staff inductions to ensure they consider the public when in and around the site.
- The CCS includes activities under:
 - environment
 - workforce
 - appearance
 - community
 - safety



Site Hours

- Site working hours are from:
 - ☐ Monday to Friday: 8:00 am to 6:00 pm
 - ☐ Saturday: 8am to 1:00 pm (noisy works will only commence at 9am)
- Some deliveries will be required outside of these hours in exceptional circumstances to prevent congestion both on and outside the site particularly during the morning rush hour – i.e. piling rigs
- Arrangements for these will be made with Westminster City Council



How to get in touch

- Newsletters
- Live webcams
- If you require further information please visit our web page:
<https://info.lse.ac.uk/staff/divisions/estates-division/lse-estate/development-projects/the-marshall-building>
- Email questions or queries to estates.marshall@lse.ac.uk
- Out of hours concerns please call Mace 24/7 Helpline (FM 24): 0845 602 5761 quoting 34915

fm24



Helpdesk Services

Questions

Safety first. **Second nature.**

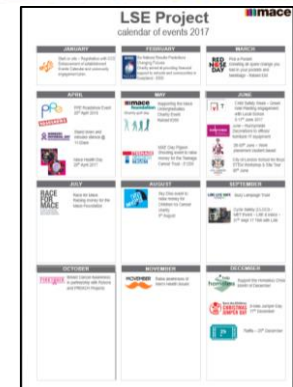
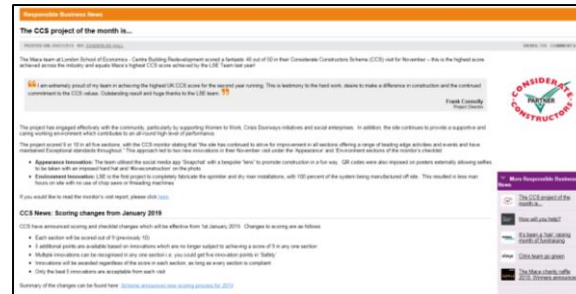
Social Impact – Innovations & best practices



Mace staff volunteered their time at Abbey Centre as part of the Women Off to Work programme that provides one-to-one CV and Interview Advice to women in long term unemployment from minority ethnic background.



University of Westminster visited the site team as part of their Construction Management module where Mace staff members invested their time and experience by supporting their syllabus.



Social – Community Initiatives



LSE Estates Division
Capital Development



Cycle safety awareness event

Date: 27th September 2017

Time: 10:00 - 13:30: 15 minute drop-in sessions

Location: LSE Campus, Portsmouth Street, (outside the Saw Swee Hock Centre)

Do you want a free
bicycle marking or free
safety advice?



UCL's London School of Economics team, in conjunction with the Metropolitan Police and partner organisations, will be holding a free cycle safety event on Wednesday 27th September 2017.

The event includes an awareness session with professional cyclists Adam Blythe from the UCL Professional Cycling Team.

By attending the event, you will also:

- receive a free bike marking and registration
- receive a new filter for your bike's chain
- get safety advice from the Metropolitan Police
- see the road from an HGV lorry driver's perspective.



For more information on the event, please contact Ushna Mughal at Ushna.Mughal@mace.com or [02077534000](tel:02077534000)



Safety first. Second nature.

Standards – Striving to drive improved performance beyond industry best practice.

Leadership – Taking Action to lead Safety First Second Nature across the business – Adopting a “Don’t Walk By” attitude to implementation. This includes recognising positive as well as negative issues.

Engagement – Engaging all of our Stakeholders in the Safety First Second Nature programme including Clients, Trade Contractors and Workers.

Behaviour – Changing Culture, using positive reinforcement, focussed training and the Behavioural Management of Safety.

Work Environment – Ensuring we have a level of consistency in the quality and presence on our sites through improved expectations on standards and branding.

