

Community update

The Marshall Building - LSE

February 2020

24-Hour Helpline: 0845 602 5761 – please quote 34915



In this issue:

Welcome to the first issue of our community update for The Marshall Building (LSE) in 2020.

Headlines in brief:

- Site update
- Project timeline
- Who to contact
- Site opening hours

Site update

Happy New Year to all our neighbours and community stakeholders!

Construction of the Marshall Building continues to make good progress. We are pleased to report that we have now completed the structure to level 3 with the East Core completed to level 5. We have started on the internal waterproofing/ screeding and the internal structures, including the helical stair which will form an architectural centre point at the ground level .

Since the last newsletter, we have had one dispensations to work out of hours to increase the height of Tower Crane 1.

UKPN will be working on Portugal St from 17th Feb until 6th March to install electrical connections into the site. Apologies for any inconvenience caused.

We are planning the following works over the next two months:

- Structure progressed up to Level 6 and the east core jump form to Level 9
- External waterproofing and slab construction continues
- External hoist to be install in April 2020
- Internal fit out and plant installation starting from the basement

Environment update



100 % of concrete, steel and plasterboard with BES6001

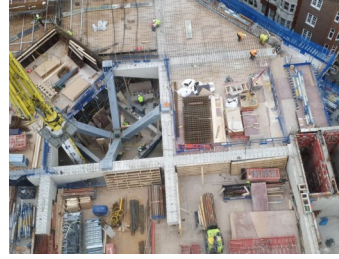
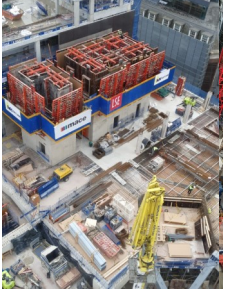


100 % of timber with FSC certification



100 % renewable energy used

Progress Views from the Tower Cranes

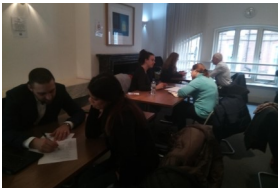


Community Update



UNIVERSITY OF WESTMINSTER

In January we hosted site visits from Westminster University and organised an LSE student's visit to another Mace project at Battersea Power Station.



We supported an employment skills workshop for the Abbey Centre's Women into Work programme, helping individuals with job applications and CV reviews.



On March 16th & 20th, we will be hosting Open Doors (part of Build UK) tours of the site. If you would like to see behind the gates of the project, please get in touch with caroline.cochrane@macegroup.com

Contacts:

We are always keen to improve our relations with our neighbours and would welcome any suggestions you may have.

Project Director



Jeremy Eavis
jeremy.eavis@macegroup.com

Community Manager



Caroline Cochrane
caroline.cochrane@macegroup.com

Milestone progress



Feb 2019 Mace start on site	March 2019 McGee contract completion	Summer 2019 Basement complete.	Autumn 2019 Structure starts including unique concrete trees	Spring 2020 Cladding starts	Summer 2020 Concrete frame	Autumn 2020 Fit out starts	July 2021 Project construction completion	Sept 2021 Building occupied by LSE
---------------------------------------	--	--	--	---------------------------------------	--------------------------------------	--------------------------------------	---	--

Site operating hours

Monday to Friday: 8am to 6pm
Saturday: 8am to 1pm

The site's main operating hours above will ensure that any demolition, earth removal, piling work and mechanical building operations are confined to these hours. Outside these times there may be personnel on site; however their activities will be restricted so as not to disrupt the local community.



www.ccscheme.org.uk

Mace head office, 155 Moorgate, London, EC2M 6XB