



### In this issue:

Welcome to the July issue of our community update for The Marshall Building at London School of Economics.

#### Headlines in brief:

- Covid-19 update
- Site progress
- Environment update
- Project timeline
- Who to contact
- Site opening hours



### Covid-19 update

We continue to follow advice from PHE, the NHS and the UK Government regarding precautions to prevent the spread of Covid-19. The site is up and running at a limited capacity. We will keep you updated with any changes to this and would like to thank you for your understanding during this time.

### Environmental Update

We are committed to delivering sustainable solutions throughout the construction and have recently trialled an innovative air quality monitor to track and identify air quality improvements. We will be building on the lessons learnt from this to continue to improve the local environment.

We are also working towards the elimination of single use plastic waste. We have recently worked with our waterproofing supplier to implement a closed loop recycling scheme to re-purpose offcuts into new waterproofing. So far this has led to the recycling of 115kg of HDPE.



### Site progress

Since the last issue, construction of the Marshall Building continues to make good progress. We are pleased to report that we have now completed the structure to level 8 with the East Core completed to level 10.

External Mastclimbers and façade works are now progressing between Level 1 – 5. Internal blockwork is progressing with fit out works to follow over the coming weeks.

#### We are planning the following works over the coming months:

- Planned road closure of Portsmouth Street from 11<sup>th</sup> May 2020 – 21<sup>st</sup> June 2021
- Concrete Structure from Level 8-10 and crane infill
- Installation of TC3 and removal on TC2 (Portugal street) over two weekends in July 2020
- Façade works to all floors Mid July onwards
- Pre cast cladding install North Elevation – August 2020
- Internal fit works – July 2020

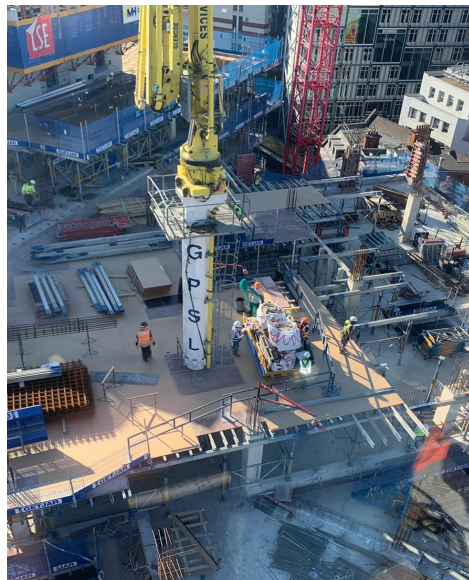
## Community Update

Since our last newsletter, we have continued to follow government guidelines on site. Unfortunately due to the ongoing situation of Covid 19, we have not been able to host any face-to-face community activities due to social distancing requirements.

However, whilst we've been in lockdown and the universities have broken up for summer, we have continued to look at new ways we can engage with the local community online. We are looking to arrange virtual career events with students in September, host virtual site visits and run employment activities the community.

Now is a great time to talk with members of the community and students to raise awareness about the construction and environment industry. If you have any questions or queries about this, please get in touch with Max.

## Progress Views



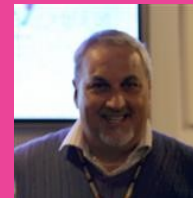
## Contacts:

We are always keen to improve our relations with our neighbours and would welcome any suggestions you may have. Please don't hesitate to get in touch.



**Project Director**

Jeremy Eavis  
jeremy.eavis@macegroup.com



**Community Manager**

Max Petrucci  
max.petrucci@macegroup.com

## Milestone progress



<b>Feb 2019</b> Mace start on site	<b>March 2019</b> McGee contract completion	<b>Summer 2019</b> Basement complete.	<b>Autumn 2019</b> Structure starts including unique concrete trees	<b>Spring 2020</b> Cladding starts	<b>Summer 2020</b> Concrete frame	<b>Autumn 2020</b> Fit out starts	<b>July 2021</b> Project construction completion	<b>Sept 2021</b> Building occupied by LSE
---------------------------------------	--	--	--	---------------------------------------	--------------------------------------	--------------------------------------	---	--

## Site operating hours (aside of Covid-19)

**Monday to Friday:** 8am to 6pm  
**Saturday:** 8am to 1pm

The site's main operating hours above will ensure that any demolition, earth removal, piling work and mechanical building operations are confined to these hours. Outside these times there may be personnel on site; however their activities will be restricted so as not to disrupt the local community.



[www.ccscheme.org.uk](http://www.ccscheme.org.uk)

**Mace head office, 155 Moorgate, London, EC2M 6XB**