

# The Marshall Building - LSE

November 2019

24-Hour Helpline: 0845 602 5761 – please quote 34915



## In this issue:

Welcome to the Nov 2019 issue of our community update for The Marshall Building (LSE).

### Headlines in brief:

- Site update
- Project timeline
- Who to contact
- Site opening hours

## Site update

The Marshall Building construction project continues to make good progress as we reach the end of 2019.

We are pleased to report that we are now laying the second floor deck with the 2nd floor concrete pours due to be completed before Christmas. The East Core is complete to level 3 and the West Core progressing to level 2.

We have now installed 8 of the unique concrete trees that will form the great hall space for the Marshall Building.

We have had two dispensations to work out of hours for larger concrete pours (these must be completed in a single session). There are 2 more large pours required to complete the 2nd floor. Higher floors have a smaller footprint and shouldn't need these larger pours.

We are planning the following works over the next two months:

- Level 3 trees to be installed by the end of Jan with the slab completed Feb 2020;
- East core jump form is progressing Levels 4 to 6;
- Waterproofing, screeding and blockwork contractors to start works in the basement; and
- Tower Crane 1 to be jumped (height increased) in early Jan

**Site will be closed for Christmas from 24th Dec, reopening on 2nd Jan 2020.**

## Environment update



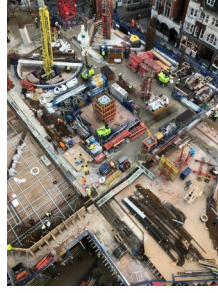
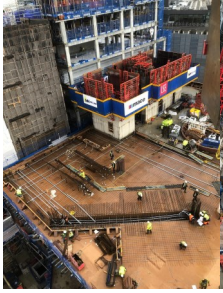
**ecotricity**

**100 %** of concrete, steel and plasterboard with BES6001

**100 %** of timber with FSC certification

**100 %** renewable energy used

# Progress Views from the Tower Cranes



## Community Update



We are a considerate constructor! Since the last newsletter, the Considerate Constructors Scheme (CCS) awarded us 43 out of 50 points in our CCS Audit. We scored maximum points for Safety, Community and Environment sections.



10 site staff ran 5k dressed as Santa in the freezing cold and raising over £3500 for Connections at St Martins.

In November we hosted site visits from LSE Geography Society and also Westminster University. More site visits are planned for Q1 2020.



## Contacts:

We are always keen to improve our relations with our neighbours and would welcome any suggestions you may have.

### Operations Director



Jeremy Eavis  
[jeremy.eavis@macegroup.com](mailto:jeremy.eavis@macegroup.com)

### Community Manager



Caroline Cochrane  
[caroline.cochrane@macegroup.com](mailto:caroline.cochrane@macegroup.com)

## Milestone progress



<b>Feb 2019</b> Mace start on site	<b>March 2019</b> McGee contract completion	<b>Summer 2019</b> Basement complete.	<b>Autumn 2019</b> Structure starts including unique concrete trees	<b>Spring 2020</b> Cladding starts	<b>Summer 2020</b> Concrete frame	<b>Autumn 2020</b> Fit out starts	<b>July 2021</b> Project construction completion	<b>Sept 2021</b> Building occupied by LSE
---------------------------------------	--	--	--	---------------------------------------	--------------------------------------	--------------------------------------	---	--

## Site operating hours

**Monday to Friday:** 8am to 6pm  
**Saturday:** 8am to 1pm

The site's main operating hours above will ensure that any demolition, earth removal, piling work and mechanical building operations are confined to these hours. Outside these times there may be personnel on site; however their activities will be restricted so as not to disrupt the local community.



[www.ccscheme.org.uk](http://www.ccscheme.org.uk)

Mace head office, 155 Moorgate, London, EC2M 6XB