

# RCS NEWS

MARCH 2018

OUR MONTHLY PROGRESS UPDATE FOR NEIGHBOURS OF THE ROYAL COLLEGE OF SURGEONS

ISSUE NUMBER 05

**Hello, and welcome to the March edition of our monthly newsletter.**

Following on from last months newsletter, works on site have significantly progressed with the formation of an additional site entrance and arrival of a long reach machine considerably aiding the demolition on site. The floor by floor demolition sequence is in full swing with the building reducing in size day by day.



*Oliver O'Shea*  
Wates Construction Manager

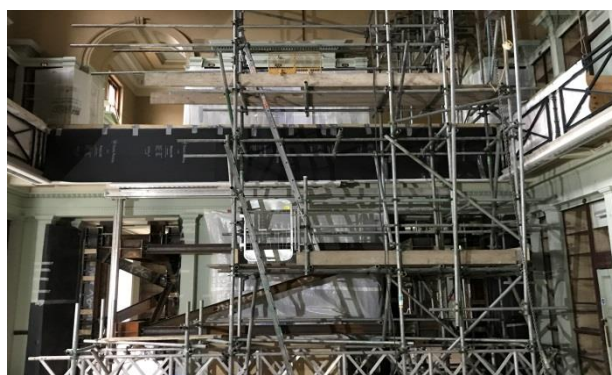
**So we are currently on track with meeting all our key programme milestones.**

Works that may be less noticeable, but are equally important to the redevelopment works, include the following:

- Continued structural demolition works (floor slabs, walls, etc.)
- Commencement of scaffolding works along the CRUK (Wates-McGee) party wall - working hours 1pm - 9pm (Saturdays), 10am - 5pm (Sunday).
- Completion of saw-cutting works down to the basement slab
- Continued bracing to the library area structure
- Continued environmental monitoring of the existing building
- Continued striking of demolition scaffold along Portugal St as demolition progresses
- Removal of bulk demolition material on the 10<sup>th</sup> March 2018 using a mobile crane on Portugal St



CRUK Scaffolding Works



Library Temporary Bracing



Using a mobile crane to remove demolition waste



Structural Demolition

## Why we are redeveloping the RCS



*The planned new Portugal Street façade*

The current building arrangements and layout at the Royal College of Surgeons are no longer capable of meeting its needs, so the plan is to consolidate its activities within a refurbished and partially re-developed Barry Building. This will enable the building to meet member aspirations for the 21st Century.

The work will involve partial demolition and redevelopment of the Barry building at 39-43 Lincoln's Inn Fields, where the new accommodation will be provided.

The original front range, including the library spaces and the Lincoln's Inn Fields façade, will be retained and refurbished with improved landscaping to the forecourt.

All services will be stripped out and renewed. The opportunity will also be taken to improve the thermal performance of the building. Modern plant and equipment will be installed and new passenger lifts will be fitted in a core to the side of a broadly central atrium.

The post-war rear portion of the building will be demolished and redeveloped, with two basement levels, including education and conservation areas. The Hunterian museum, a temporary exhibition space and associated education space will occupy the majority of the ground floor, including a public café. Examination suites will occupy the first floor level alongside the retained library rooms, with four floors of open plan RCS office space above, and a conference suite, with associated catering, will be located on the sixth floor level. All floors from the ground floor upwards will be orientated around the large central atrium.



# Upcoming works

With structural demolition in full flow, we will need to partially close Portugal Street on two days next month. On the 7<sup>th</sup> April and the 14<sup>th</sup> April we will be relocating demolition plant and removing demolition materials. Portugal Street will be reduced to a single lane carriageway, from 07:00 through to 18:00, so that a mobile crane can be positioned directly outside the RCS.

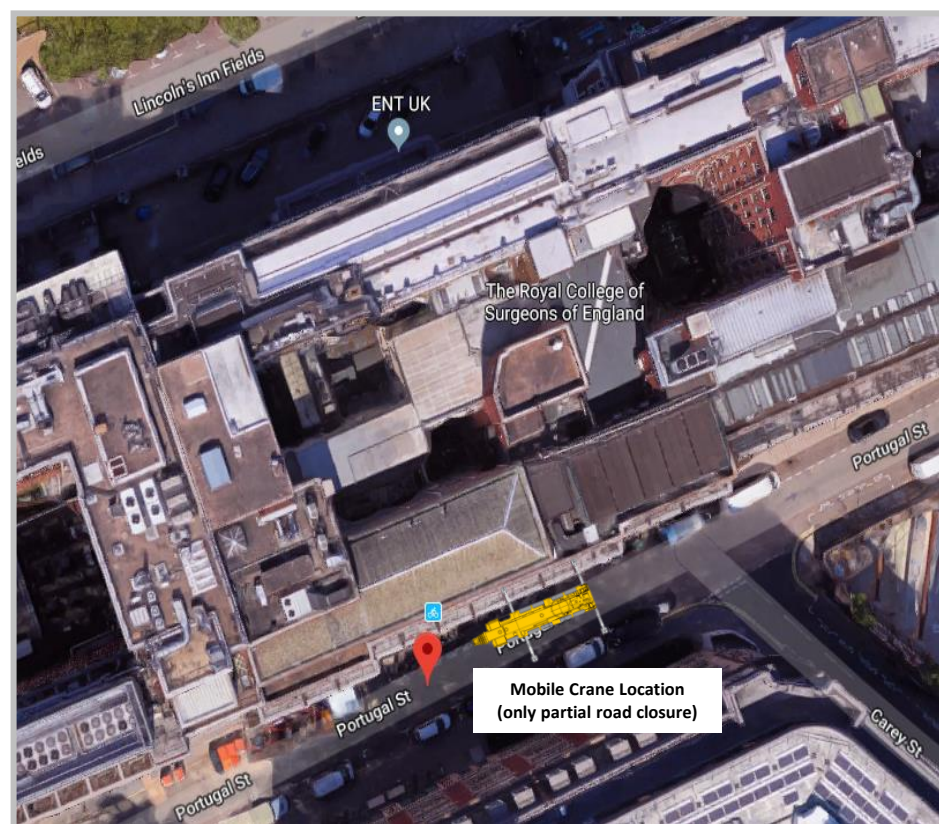
Due to the formation of the additional site entrance on Portugal St now complete, the level of demolition arising's leaving site daily is due to increase. This increase in productivity is likely to result in additional vehicle movement along Portugal St with skips and waste lorries entering/leaving site; all of which will be carefully managed throughout.

Other key activities will include:

- Continued structural demolition of the remaining levels of the building
- Completion of library bracing works
- External services removal along the retained Barry Building
- Continuation of scaffolding works along the CRUK party wall (as part of Weekend Working Agreement) - working hours 1pm - 9pm (Saturdays), 10am - 5pm (Sundays).



Planned demolition from Portugal Street



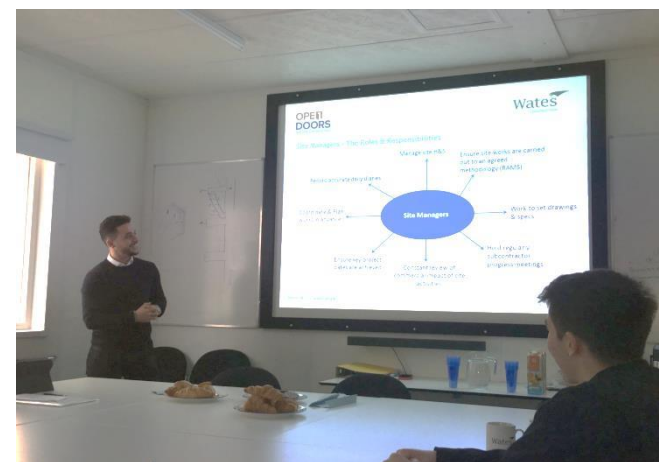
Position of the mobile crane on Portugal Street



# Our recent community initiatives

## Open Doors Event - 22<sup>nd</sup> March 2018

As part of our commitment to championing industry awareness and sharing all the fascinating work going on at the Royal College of Surgeons, the site was be opened up to interested parties to book in and see works taking place. The visit was a huge success and provided all visitors with a real insight into the every-day activities that take place on such a prestigious project. The event also provided a platform to meet site team members and ask any questions related to the project, their roles and any other areas of interest.



## Sports Relief Endurance Challenge - 20<sup>th</sup> & 21<sup>st</sup> March 2018

This month saw the site team do its bit to raise money for Sport Relief 2018 by taking part in the Cycle Endurance Challenge. This involved over 30 participants taking part over the course of 2-days to take it in turns keep an exercise bike moving at all times between 8am - 5pm.

Over the course of the challenge as a team we managed to cycle a massive **255.24 miles** whilst raising nearly **£500** in the process! A big thanks to all those who took part and contributed!



## Who's who in the Wates team...



**Russ Watkins, Project Manager**  
Tel: 07740 542 509  
Email: [russ.watkins1@wates.co.uk](mailto:russ.watkins1@wates.co.uk)

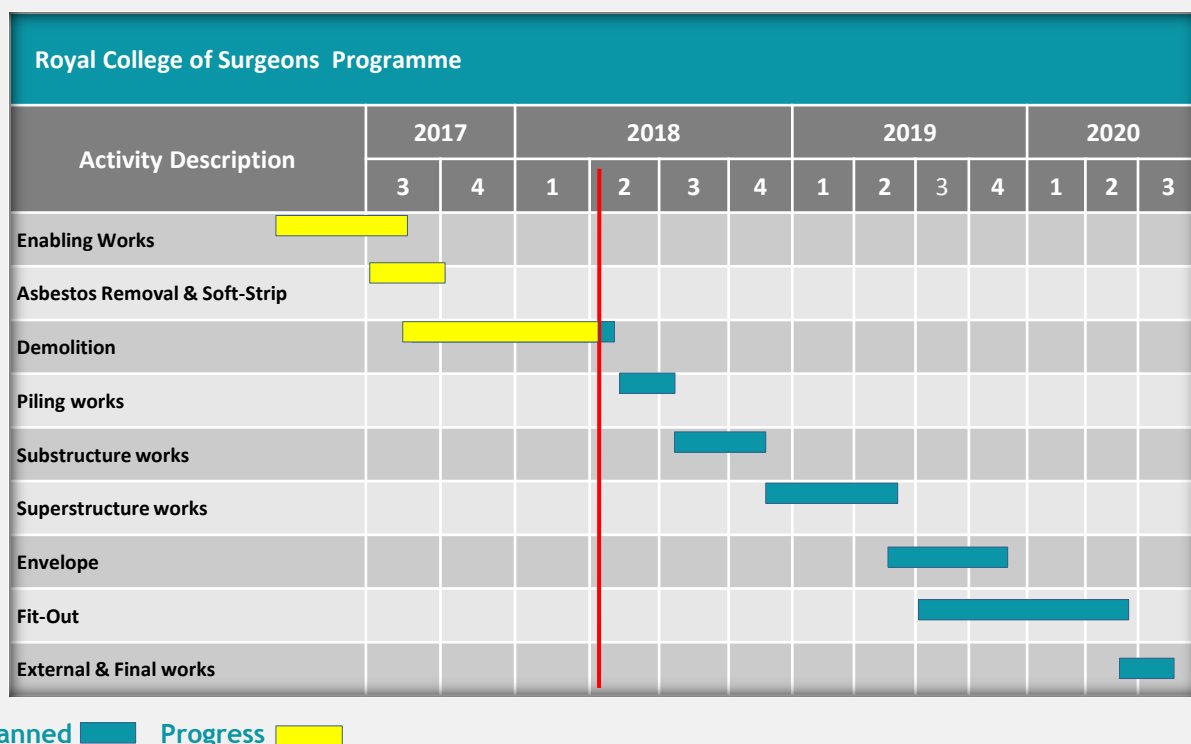


**Colin Green, Site Manager & Neighbourhood Liaison Officer**  
Tel: 07875809805  
Email: [colin.green@wates.co.uk](mailto:colin.green@wates.co.uk)

**Wates Project Office**  
Ground Floor,  
Royal College of Surgeons of England,  
39-43 Lincoln's Inn Fields,  
London, WC2A 3PE  
Email: [RCS@wates.co.uk](mailto:RCS@wates.co.uk)

## Programme of works

Wates



## Site working hours

Monday to Friday 8:00 - 18:00  
Saturday 8:00 - 21:00  
Sunday 10:00 - 17:00  
\*Works after 1pm (Sat) and all (Sun) for CRUK scaffold only

### CONSIDERATE CONSTRUCTORS SCHEME

Our site is registered with the Considerate Constructors Scheme. The Wates business is a proud member of the Considerate Constructors Scheme and we actively strive to promote industry best practice. We intend this project to be an exemplary site that achieves the highest standards. A key part of this is our engagement with the community and we will update you on our plans in the new future.

**We are considerate constructors**  
We are registered with the Considerate Constructors Scheme  
Call: 0800 783 1423 visit: [www.ccscheme.org.uk](http://www.ccscheme.org.uk)  
Considerate Constructors Scheme logo with 'PARTNER' text and social media icons.