

RCS NEWS

APRIL 2018

OUR MONTHLY PROGRESS UPDATE FOR NEIGHBOURS OF THE ROYAL COLLEGE OF SURGEONS

ISSUE NUMBER 06

Hello, and welcome to the March edition of our monthly newsletter.

Following on from last months newsletter, works on site have significantly progressed with the bulk of demolition reaching the basement slab and thus allowing the commencement of MOLA Archaeological work.

So we are currently on track with meeting all our key programme milestones.



Oliver O'Shea
Wates Construction Manager

Works that may be less noticeable, but are equally important to the redevelopment works, include the following:

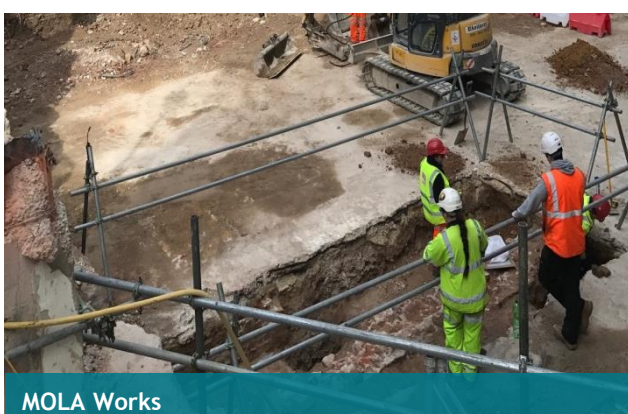
- Completion of structural demolition down to basement slab (excluding CRUK element)
- Completion of MOLA archaeological survey works
- Completion of bracing to the library area structure
- Completion of floor load testing to CRUK section
- Continuation of scaffolding works along the CRUK (Wates-McGee) party wall - working hours 1pm - 9pm (Saturdays), 10am - 5pm (Sunday).
- Continued environmental monitoring of the existing building
- Continued striking of demolition scaffold along Portugal St as demolition progresses



CRUK Scaffolding Works



Floor Load Testing (CRUK)



MOLA Works



Structural Demolition

Why we are redeveloping the RCS



The planned new Portugal Street façade

The current building arrangements and layout at the Royal College of Surgeons are no longer capable of meeting its needs, so the plan is to consolidate its activities within a refurbished and partially re-developed Barry Building. This will enable the building to meet member aspirations for the 21st Century.

The work will involve partial demolition and redevelopment of the Barry building at 39-43 Lincoln's Inn Fields, where the new accommodation will be provided.

The original front range, including the library spaces and the Lincoln's Inn Fields façade, will be retained and refurbished with improved landscaping to the forecourt.

All services will be stripped out and renewed. The opportunity will also be taken to improve the thermal performance of the building. Modern plant and equipment will be installed and new passenger lifts will be fitted in a core to the side of a broadly central atrium.

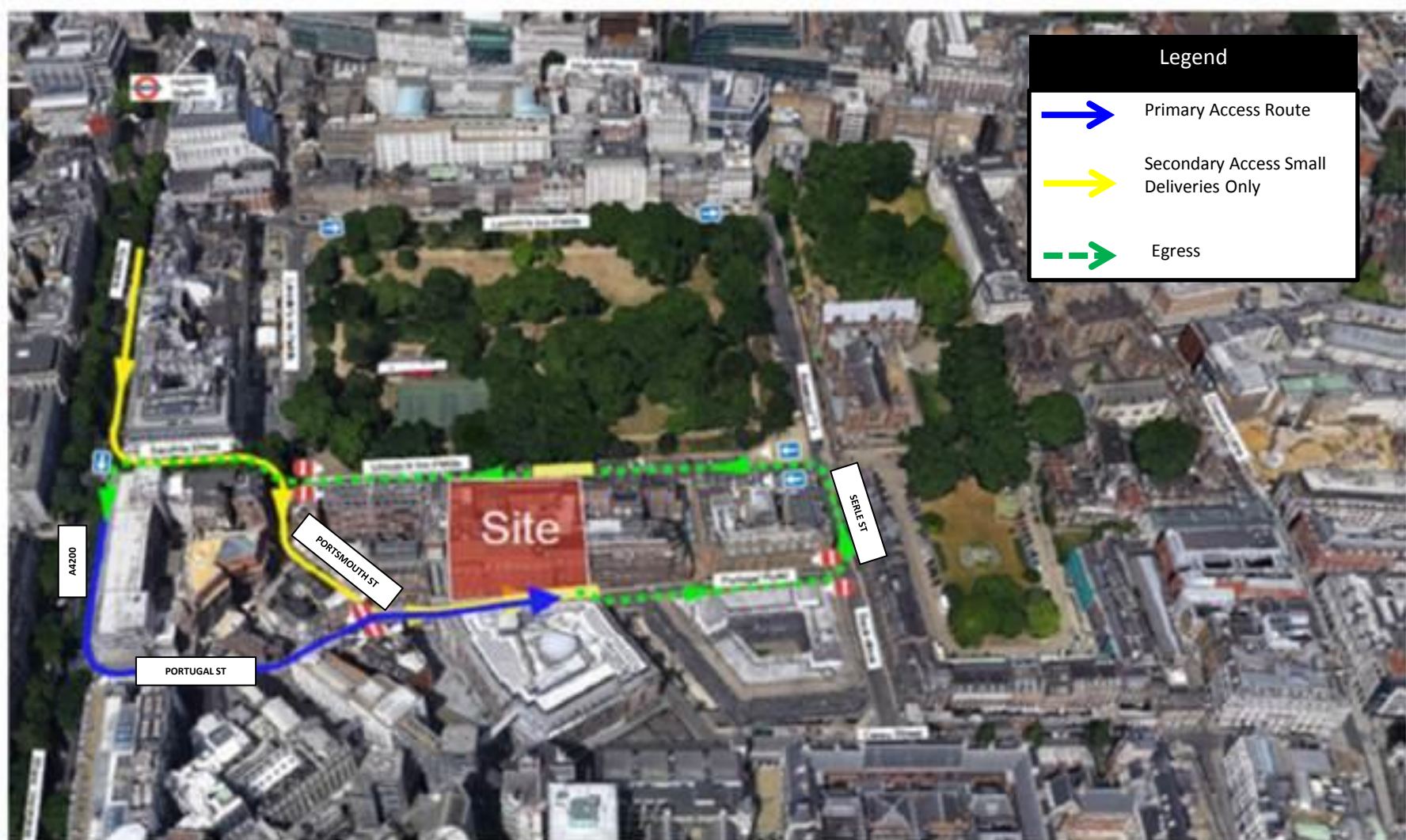
The post-war rear portion of the building will be demolished and redeveloped, with two basement levels, including education and conservation areas. The Hunterian museum, a temporary exhibition space and associated education space will occupy the majority of the ground floor, including a public café. Examination suites will occupy the first floor level alongside the retained library rooms, with four floors of open plan RCS office space above, and a conference suite, with associated catering, will be located on the sixth floor level. All floors from the ground floor upwards will be orientated around the large central atrium.

Upcoming works

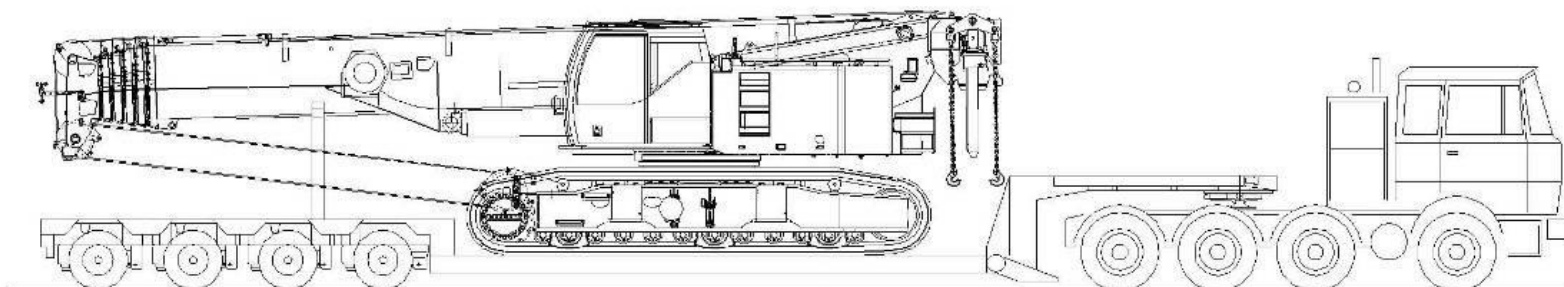
With structural demolition nearing completion and with only the last remaining CRUK section outstanding, arrangements have been made to deliver a Crawler Crane to site to aid this final push. This has been scheduled in for the **11th May 2018**. To reduce the potential for any disruption to the area this will take place between 5am - 7am.

Other key upcoming activities will include:

- Structural demolition to the CRUK element of works
- External services removal along the retained Barry Building
- Completion of felt and batten works to retained Barry Building external wall
- Formation of site ramp access from Portugal St (Gate 4)
- Completion of scaffolding works along the CRUK party wall (as part of Weekend Working Agreement)
- working hours 1pm - 9pm (Saturdays), 10am - 5pm (Sundays).



Proposed Access Route for Crawler Crane Delivery



Crane Delivery Arrangement Diagram

Our recent community initiatives

'Stop. Make a Change.' Campaign - 27th April 2018

April 2018 saw the site as whole take part in an industry wide stand down titled 'Stop. Make A Change.'. The initiative provided an opportunity to speak directly to employees and suppliers about health, safety & wellbeing issues, and to make commitments to actions targeting improved performance in these areas. The main emphasis of the presentation delivered focused on mental health and plant movement - both relevant and fundamental aspects within the construction industry.

To follow up this event a Hog Roast was laid out for all site team members, key stakeholders and other neighbouring projects to celebrate the substantial completion of demolition. During this period over 80,000 working hours were complete without a reportable accident.



Who's who in the Wates team...



Russ Watkins, Project Manager
Tel: 07740 542 509
Email: russ.watkins1@wates.co.uk



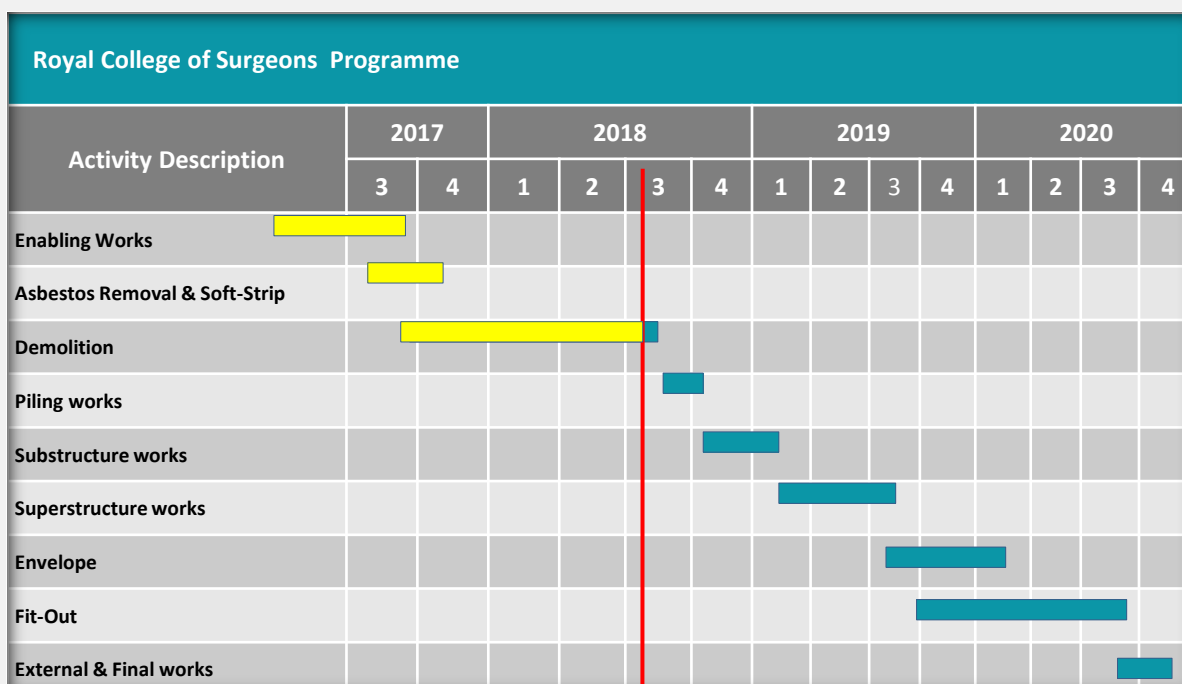
Colin Green, Site Manager & Neighbourhood Liaison Officer
Tel: 07875809805
Email: colin.green@wates.co.uk

Wates Project Office

Ground Floor,
Royal College of Surgeons of England,
39-43 Lincoln's Inn Fields,
London, WC2A 3PE

Email: RCS@wates.co.uk

Programme of works



Planned ■ Progress ■

Site working hours

Monday to Friday 8:00 - 18:00

Saturday 8:00 - 21:00

Sunday 10:00 - 17:00

*Works after 1pm (Sat) and all (Sun) for CRUK scaffold only

CONSIDERATE CONSTRUCTORS SCHEME

Our site is registered with the Considerate Constructors Scheme. The Wates business is a proud member of the Considerate Constructors Scheme and we actively strive to promote industry best practice. We intend this project to be an exemplary site that achieves the highest standards. A key part of this is our engagement with the community and we will update you on our plans in the new future.

We are considerate constructors



We are registered with the Considerate Constructors Scheme
Call: 0800 783 1423 visit: www.ccscheme.org.uk

