

RCS NEWS

JULY 2018

OUR MONTHLY PROGRESS UPDATE FOR NEIGHBOURS OF THE ROYAL COLLEGE OF SURGEONS

ISSUE NUMBER 09

Hello, and welcome to the July edition of our monthly newsletter.

Following on from last month's newsletter, works on site have significantly progressed with the demolition to the last remaining section of the existing Barry Building nearing completion. Additional demolition works focused around salvaging existing brickwork for use in the new build is also nearing completion.

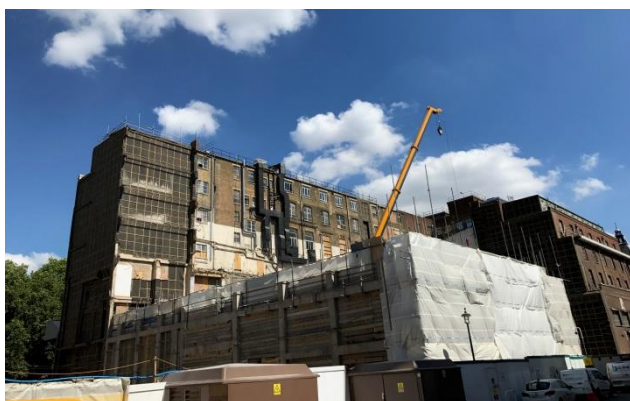
So we are currently on track with meeting all our key programme milestones.



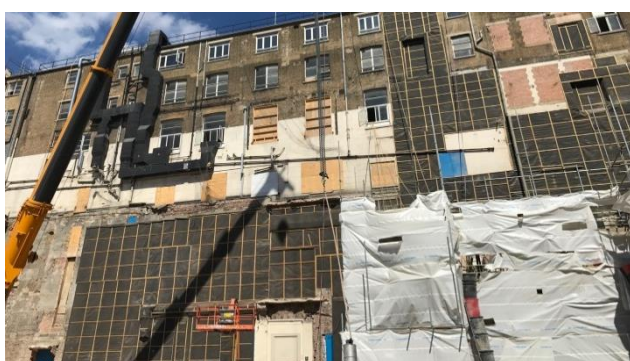
Oliver O'Shea
Wates Construction Manager

Works that may be less noticeable, but are equally important to the redevelopment works, include the following:

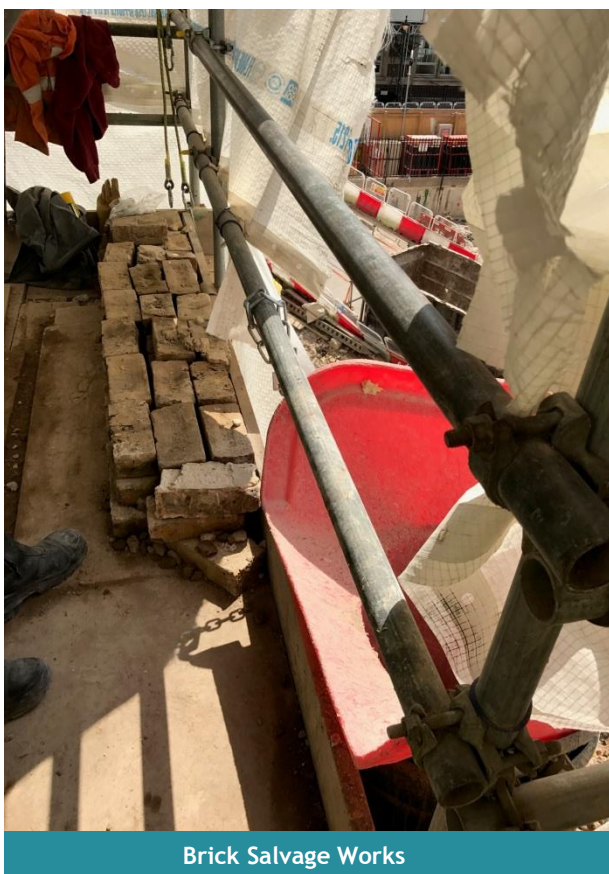
- Continued demolition of the last section of the RCS building located on the RCS/LSE "CRUK" boundary
- Removal of demolition scaffold and ladder beams along the RCS/LSE "CRUK" boundary
- Removal of temporary steelwork previously forming site entrance on Portugal St
- Continued environmental monitoring of the existing building
- Continued brick salvage works
- Completion of library timber floor removal



Continued Demolition to remaining RCS Structure



Continued Felt & Batten/Stairwell Demolition



Brick Salvage Works

Why we are redeveloping the RCS



The planned new Portugal Street façade

The current building arrangements and layout at the Royal College of Surgeons are no longer capable of meeting its needs, so the plan is to consolidate its activities within a refurbished and partially re-developed Barry Building. This will enable the building to meet member aspirations for the 21st Century.

The work will involve partial demolition and redevelopment of the Barry building at 39-43 Lincoln's Inn Fields, where the new accommodation will be provided.

The original front range, including the library spaces and the Lincoln's Inn Fields façade, will be retained and refurbished with improved landscaping to the forecourt.

All services will be stripped out and renewed. The opportunity will also be taken to improve the thermal performance of the building. Modern plant and equipment will be installed and new passenger lifts will be fitted in a core to the side of a broadly central atrium.

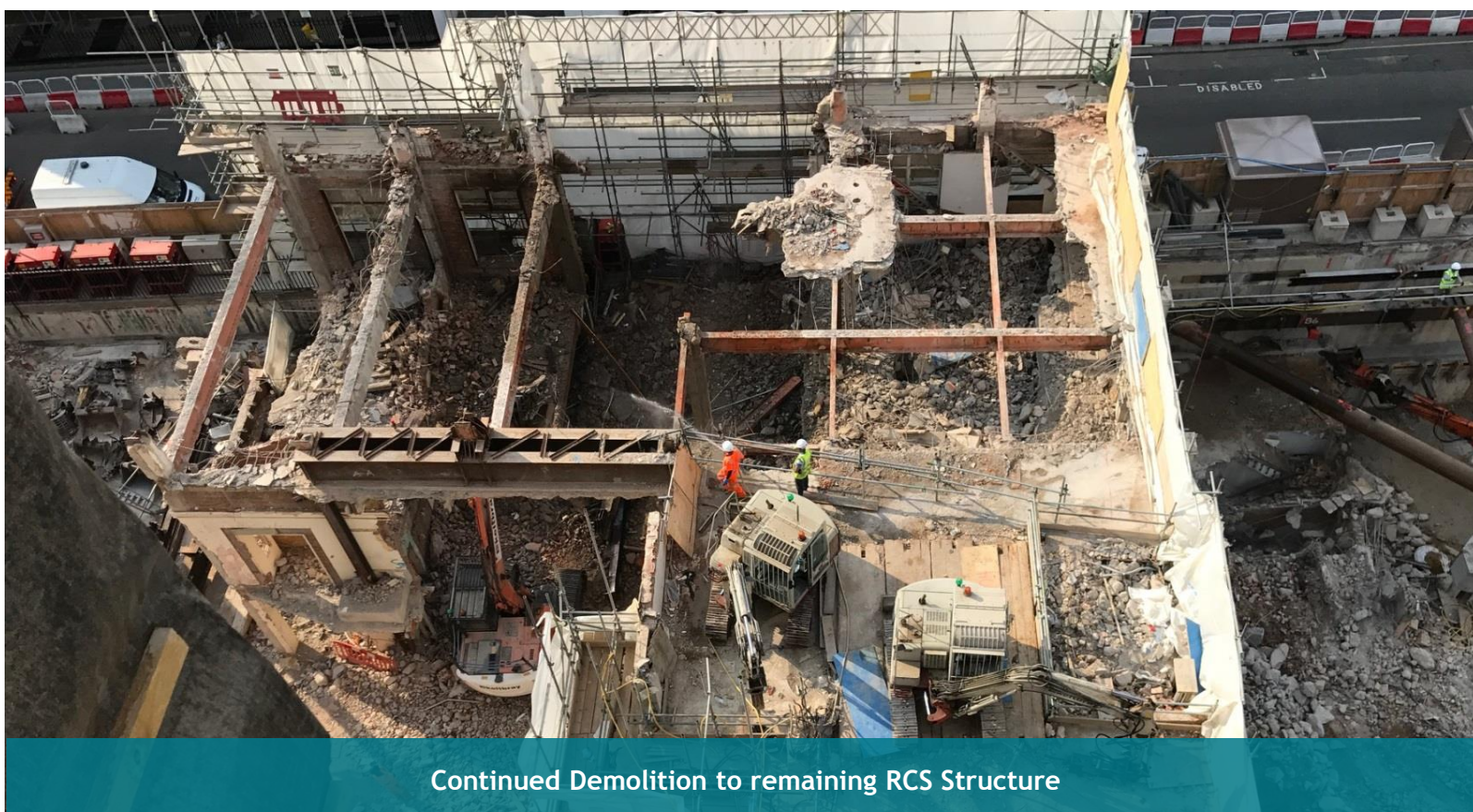
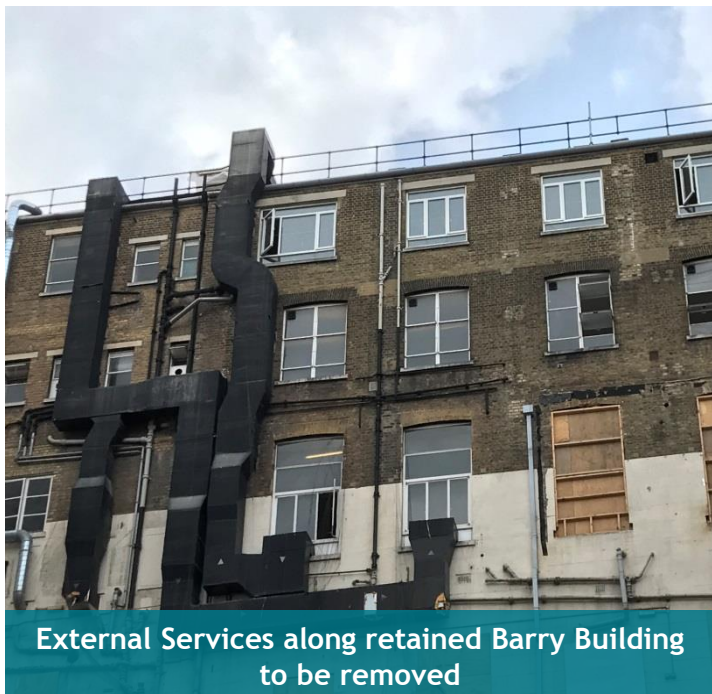
The post-war rear portion of the building will be demolished and redeveloped, with two basement levels, including education and conservation areas. The Hunterian museum, a temporary exhibition space and associated education space will occupy the majority of the ground floor, including a public café. Examination suites will occupy the first floor level alongside the retained library rooms, with four floors of open plan RCS office space above, and a conference suite, with associated catering, will be located on the sixth floor level. All floors from the ground floor upwards will be orientated around the large central atrium.

Upcoming works

With the commencement of demolition to the last remaining portion of the existing building (CRUK) nearing completion, the upcoming works will centre around progressing these works through to the basement slab. Due to the nature of the works constant coordination with the neighbouring site has proved fundamental to reach this point and will do throughout the works.

Other key upcoming activities will include:

- Continued structural demolition to the remaining RCS structure element of works
- External services removal along the retained Barry Building
- Continued demolition to the existing lift shaft structure
- Demolition to remaining internal walls within retained Barry Building (basement & ground floor)
- Removal & storage of salvaged bricks from lift shaft structure along retained Barry Building
- Removal of services below existing Library flooring



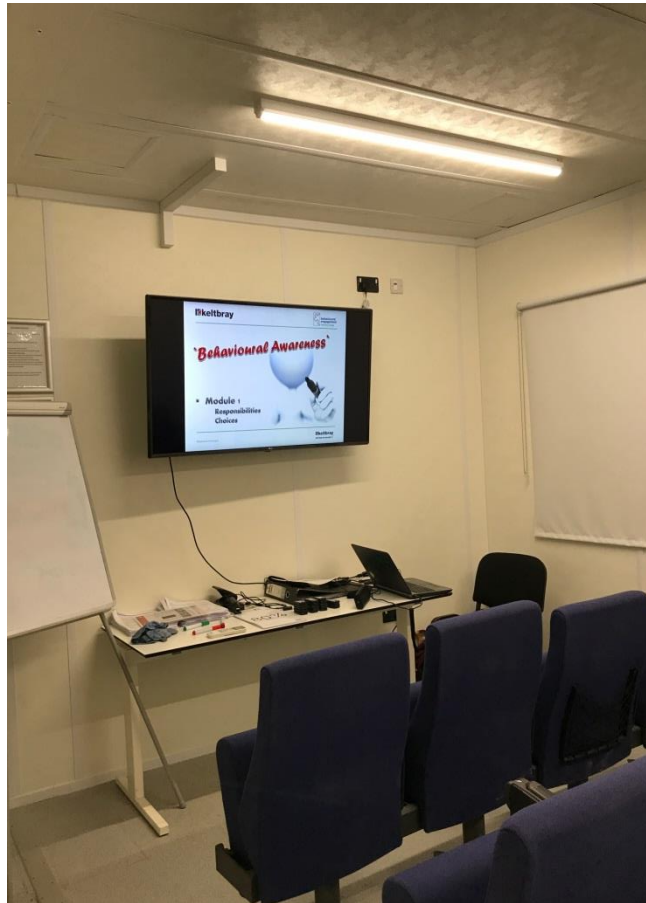
Our recent workforce initiatives

Behavioural Awareness

This months workforce safety initiative centred around general Behavioural Awareness on site.

A workshop was delivered to operatives on site and enabled them to develop skills around the following topics:

- Motivate and inspire people to look at their own behaviour
- Build awareness in the power of team dynamics
- Establish skills in how to influence teams in a positive manner
- Gain fresh impetus in persuading people to work safer
- Understand how to cater approaches for different personality types



Overall the initiative was deemed highly beneficial for all attendees. Next months initiative will be focused on Contamination & Remediation Works

Who's who in the Wates team...



Martin Kelly, Site Manager
Tel: 07709398884
Email: martin.kelly@wates.co.uk



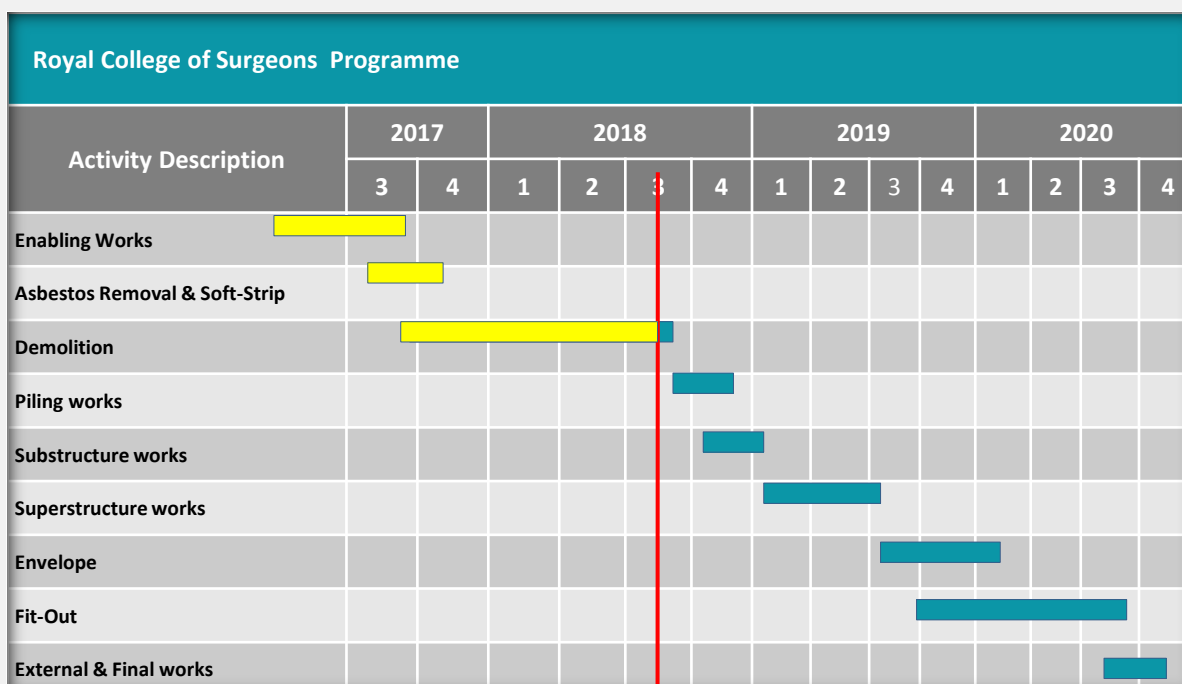
Basil Alani, Section Manager
Tel: 07932 80 40 54
Email: basil.alani@wates.co.uk

Wates Project Office

Ground Floor,
Royal College of Surgeons of England,
39-43 Lincoln's Inn Fields,
London, WC2A 3PE

Email: RCS@wates.co.uk

Programme of works



Planned ■ Progress ■

Site working hours

Monday to Friday 8:00 - 18:00

Saturday 8:00 - 13:00

CONSIDERATE CONSTRUCTORS SCHEME

Our site is registered with the Considerate Constructors Scheme. The Wates business is a proud member of the Considerate Constructors Scheme and we actively strive to promote industry best practice. We intend this project to be an exemplary site that achieves the highest standards. A key part of this is our engagement with the community and we will update you on our plans in the new future.

We are considerate constructors



We are registered with the Considerate Constructors Scheme
Call: 0800 783 1423 visit: www.ccscheme.org.uk

