



THE LONDON SCHOOL
OF ECONOMICS AND
POLITICAL SCIENCE

Annual Sustainability Report 2020/21

Foreword by LSE Director	2
Sustainability highlight	3
Approach and decision-making	4
Education	6
Research	8
Engagement and Leadership	10
Investment	11
Collaboration	13
Our School	15
Sustainability Awards	30



In this report you will find icons highlighting how our work connects with the UN Sustainable Development Goals.

The progress tracker for our next steps can be found on our [webpage](#).



Foreword by LSE Director

This has been a challenging year for all of us impacted one way or another by the pandemic. But it has also been a year where we learned how to do many things differently. Among the things we learned at LSE is that our commitment to sustainability is stronger than ever as illustrated by LSE joining the United Nations Race to Zero, a global campaign to rally support for the rapid transition to a “net zero” carbon world.



This year LSE launched its Sustainability Strategic Plan, created in close collaboration with the LSE community to maximise our impact in shaping a sustainable world. The plan sets a comprehensive package of measures to embed environmental sustainability across our operations with six key areas of focus: *Education, Research, Engagement and Leadership, Investment, Collaboration, and Our School* for campus operations.

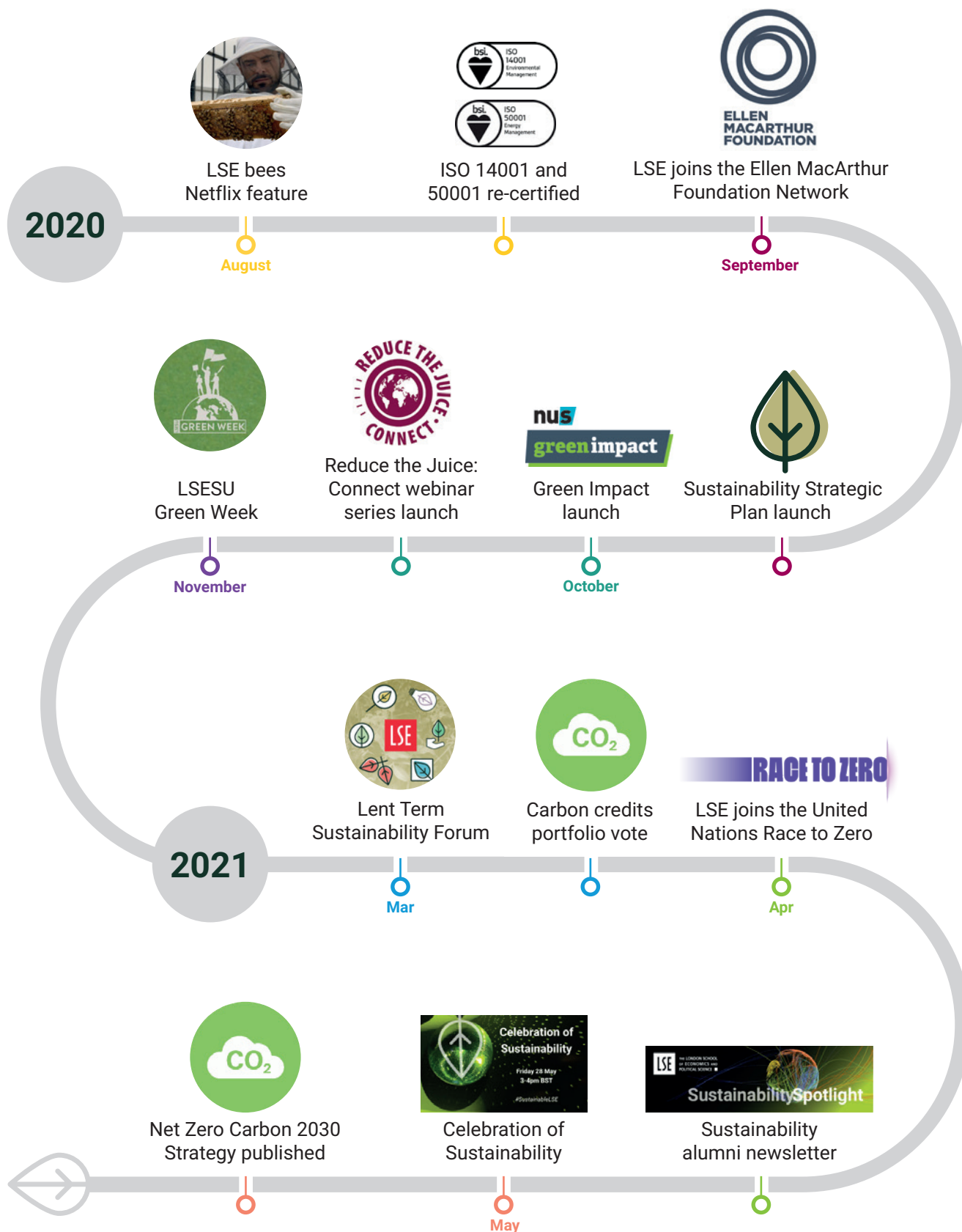
Our Sustainability Strategic Plan has been a catalyst for action and accelerated our already wide-ranging efforts. During the pandemic, sustainability emerged as a key theme which supported our strong sense of community at LSE, with our Sustainability Awards recognising a record 38 individuals and teams. This report provides an overview of sustainability initiatives across the School for the academic year 2020/21, and the progress made across the six themes of the plan.

Critical to our success is everyone across the LSE community playing their part, be it students, academics and professional staff, and alumni. If you have not done so already, join us on this important journey to create a sustainable LSE and ensure the School makes its contribution in shaping a more sustainable world.

Minouche Shafik

Director, LSE

#Sustainable LSE 2020/21 highlights





Approach and decision-making

LSE's environmental performance is coordinated by the Estates Division's Sustainability Team with delivery and decision-making supported by several committees and working groups including both student and staff representatives.



The Sustainability Policy is delivered via our Environmental Management System, which has been ISO 14001 certified since 2012.



The Energy Policy is delivered via our Energy Management System, which has been ISO 50001 certified since 2015.

In addition to our formal networks we use informal networks to engage with our stakeholders to seek feedback and discuss ideas.

These systems establish the Sustainability Action Plan which in turn sets an annual programme of work and SMART targets. This Annual Sustainability Report details our performance against these targets.

KEY STAKEHOLDERS		
INTERNAL	Students	Students LSESU and societies Students in halls of residence
	Staff	Professional Services Staff Academic Staff Senior Leadership
EXTERNAL	Partners and networks	Delivery partners Suppliers and contractors Collaboration networks e.g. EAUC, Ellen MacArthur Foundation Higher Education peers
	Other interested parties	LSE alumni LSE visitors Local community Regulatory and certification bodies Campaign groups, NGOs, trade unions General public

SUSTAINABILITY DECISION-MAKING



GOVERNANCE



COUNCIL

General oversight of sustainability progress

LEADERSHIP



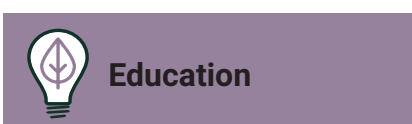
SCHOOL MANAGEMENT COMMITTEE

Provided oversight of sustainability progress

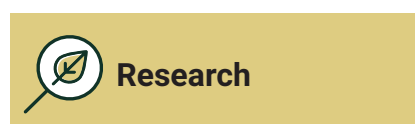
SUSTAINABILITY LEADERSHIP BOARD

Oversee and monitor the delivery of the Sustainability Strategic plan

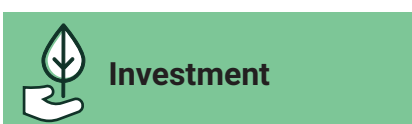
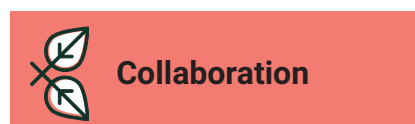
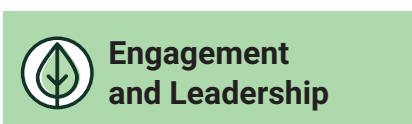
DELIVERY



EDUCATION COMMITTEE



RESEARCH COMMITTEE



INVESTMENT SUB COMMITTEE



SUSTAINABILITY OPERATIONS GROUP

Environmental working groups
(Estates, Students, Residences, Catering)

Local working groups
(E.g. Green Impact)

CONSULTATION AND ENGAGEMENT



STUDENTS AND STAFF

Input various means – working groups, Green Impact teams, events, engagement with the sustainability team.





Education

Embedding sustainability across our teaching and learning experiences



Education for Sustainability Initiative

Education for Sustainability is an opportunity for LSE to ensure social sciences makes its critical contribution to sustainability, and for LSE students to be prepared for the complex challenges they will face in a workplace where sustainability will be a shared responsibility regardless of one's role.

Highlights

- Launch of a **dedicated webpage** for educators to serve as an introduction to the area and its importance and potential to enrich disciplinary study, showcasing different lenses and pedagogical approaches that can be used.
- Formation of an educators' network to promote and amplify the initiative across the School with an academic lead appointed (Dr Erica Pani, Department of Geography and Environment) to work with fellow academics across the School.
- MS Teams area created for the network to be used for discussion and resource sharing, continuing the conversation in an informal capacity.
- A case study from the Department of Accounting (Dr Pik Liew) has been accepted for showcase by Advance HE – a sector-wide organisation that looks at learning and teaching.

CASE STUDY: Fashion Can Do Better, Global Circular Challenge 2021

The Department of Geography and Environment's 2021 Global Circular Challenge invited universities from around the world to participate in an online competition to design solutions that improve the sourcing, manufacturing, use and disposability of fashion products in a circular world. Equipping students with both the skills and the platform to create fashion products that last longer and are designed to minimise end-of-life impacts.



CASE STUDY: LSE100

The redesign of LSE100, our flagship interdisciplinary course for all undergraduate students, was completed during the 2020/21 academic year. Sustainability is now a key theme within the module and will develop students analytical skills whilst broadening their educational and intellectual experience at the School.

CASE STUDY: Embedding Sustainability, LSESU Sustainable Futures Society

An example of a bottom-up approach, the Sustainable Futures Society *Embedding Sustainability* project aims to embed environmental sustainability into all LSE Departments, achieving practical tangible change. In 2019/20, 38 students joined the project as departmental ambassadors.

These ambassadors sourced and created a list of best practice examples of education for sustainability beyond the School's Department of Geography and Environment as well as from other universities. They also conducted research into students' experiences, opinions, and desires for education for sustainability.

Next steps:

- Additional student recruitment and the formation of departmental teams prior to training with the Eden Centre on conducting further research.
- Analysing findings and creating a report as well as departmental posters, podcasts and a short documentary summarising and exploring the project.

Next steps:

- The Eden Centre will take the lead on the Education for Sustainability initiative with the appointment of a Programme Manager.
- Institutional level events and the creation and distribution of resources to support and enhance staff and students' practices.
- Increased collaboration amongst students and staff to embed sustainability within academia and research as well as our communal experiences.
- We will provide support for extra-curricular educational opportunities and local education initiatives with our collaborators.



Research

Shaping the global sustainability debate through our research



Highlights

- Sustainability is a key theme of the LSE Research Support Fund, launched in December 2020. The fund has provided funding for four new projects with 28 per cent of the applications related to sustainability.
- LSE's **Research for the World** continued to make a significant contribution to sustainability and the UN Sustainable Development Goals, on topics as diverse as palm oil and peat fires, climate emergency declarations, sustainable recovery and many more.
- LSE research informed UK and international policy-makers on the need to embed sustainability within COVID recovery policies.
- The **LSE Festival** and **Shaping the Post-COVID World** lecture and event series both featured sustainability as a key theme with their own dedicated sustainability sections showcasing some of our top research.
- Work was conducted to reduce the environmental impact of future research travel such as: hosting PhD vivas online as the default, the carbon offsetting of travel, and encouraging departments to conduct online or hybrid seminars.



Racial currents: can a project to boost trade on Colombia's Magdalena River address historical inequalities?

9 Nov 2021



The hidden costs of air pollution

7 Sep 2021



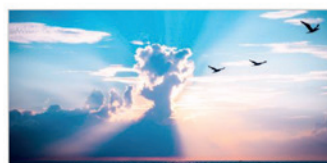
We've declared a climate emergency – now what?

4 May 2021



Can the world avert a climate emergency?

15 Jan 2021



Coronavirus must be a lesson on how we respond to climate change

15 Jan 2021



The hazy shade of palm oil

12 Jan 2021

Sustainability articles in *Research for the World*

CASE STUDY: “Reconceptualizing European Power in an Era of Turmoil: contestation, relevance and sustainability” (RENPET)

Coordinated by Leiden University, RENPET is an Erasmus+ Jean Monnet Network of 11 universities across Europe and a leading pan-European professional academic association on EU foreign policy. Fostering cutting edge research, the network translates research into innovative teaching and professional development and actively engages in policy debates.

Dr Federica Bicchi from LSE’s Department of International Relations is a member of the network, and the lead for the greening of its budget, working on CO2 emission reductions via transportation and academic best practices.

CASE STUDY: Building a Sustainability Culture: Using behavioural science to enhance and test LSE’s Sustainability e-module

LSE PhD student Anandita Sabherwal received funding from the Sustainable Projects Fund to modify the contents of the LSE sustainability e-module so that it not only educates, but also motivates students and staff to take sustainable action. As well as increasing the reach of the module to the wider LSE community; and quantitatively testing the effects of the module on LSE’s sustainability culture and action.

Next steps:

- We will explore the ways we can contribute to the research landscape by mapping our strengths and opportunities.
- We will host a workshop for researchers exploring how LSE’s research can contribute to shaping a sustainable world.
- We will support funding applications and improve awareness of funding opportunities.
- We will focus and strengthen our efforts and resources on impactful sustainability research.



Engagement and Leadership

Deepening public discussion on sustainability across the world



LSE is in a unique position to play a leading role in shaping the global discussion of ideas on sustainability and the challenges and opportunities it raises. In 2020/21 LSE continued to inform and engage with UK and international decision-makers to promote dialogue and decisive action on sustainability and climate change, with leadership from the Grantham Research Institute on Climate Change and the Environment at LSE. The Institute and its chair, Lord Nicholas Stern:

- Published numerous working papers, position pieces, and policy reports, supported by media engagement, on themes such as sustainable finance and climate litigation.
- Advised the UK Government on its preparations for COP26, the UN Climate Conference that took place in Glasgow in 2021.
- Advised the UK Presidency of the G7 on the need for a focus on sustainable economic recovery from the pandemic.
- Supported the International Monetary Fund and the World Bank in forming a sustainable recovery and growth high level advisory group.
- Hosted a number of high-profile public events including *Financing a Green and Just Recovery from COVID-19* and *Our Slim Window of Opportunity: What The Climate Change Agenda Must Achieve In 2021*.

CASE STUDY: The Global Alliance of Universities on Climate (GAUC), co-founded by LSE

The GAUC works to advance climate change solutions through research, education, and public outreach.

This year the GAUC organised a range of high-profile events including:

- *The Global Pathways to Net Zero Emissions and Carbon/Climate Neutrality* two-day conference in June 2021 with the latest research from member institutions.
- *The Campus Decarbonisation Workshop* in March 2021 showcased eight world leading universities and their efforts to reduce carbon emissions.
- *The GAUC Graduate Forum* in November 2020.



Investment

Making sustainability a key part
of our investment decisions



Our investments of donations and endowments, as well as funds held for capital projects and strategic investment, are in externally managed funds. As of July 2021, the School's endowment was valued in the region of £332 million.

The School is a signatory of the United Nations endorsed Principles for Responsible Investment and its investment decisions are guided by our Socially Responsible Investment Policy. Details of our approach to responsible investment can be found on our [webpage](#).

Progress

Since the introduction of our Socially Responsible Investment Policy in 2015/16, our investment exposure to tobacco manufacture, controversial weapons or companies which are significantly engaged in the extraction of thermal coal and tar sands, the most polluting of fossil fuels, has reduced by over 80 per cent, and this year we further reduced our negative filters revenue test from 10 per cent to three per cent.

We have no direct investment in these areas and are committed to driving performance through active engagement with our fund managers and our annual Environmental, Social and Governance performance evaluation process which was revised this year and includes criteria for:

- UNPRI Stewardship Code ranking
- Quality and impact of engagement with Environmental, Social and Governance issues and reporting
- Task Force on Climate-related Financial Disclosures or equivalent standards (fund managers seeking increased from 25 per cent to over 85 per cent of the total)
- Diversity and Inclusion (grown to almost 75 per cent of our fund managers)
- UN Sustainable Development Goals (grown to over 65 per cent)

This year a review of LSE's portfolio against Transition Pathway Initiative datasets was conducted and its findings published. The Investment Sub-Committee considered a paper on the applications of LSE's Transition Pathway Initiative to the School's Portfolios and Endowment.

Our negative screening filters were strengthened to limit our exposure to the most polluting fossil fuels, alongside the production of tobacco and indiscriminate weapons.

Our **Responsible Investment webpage** was updated to share our responsible investment practices including our fund managers evaluation methodology and portfolio composition.

Next steps

- In 2021/22 work will start to review and update LSE's Socially Responsible Investment policy, in consultation with relevant stakeholders and the LSE community.



Coordinated by the LSESU Environment and Ethics Officer the 2020/21 Green Week explored Intersectional Environmentalism with LSESU societies, the School and partners delivering a combination of academic, activist, and social events.

This ice sculpture was installed in front of the Library, drawing attention to the urgency of the ecological and climate crisis.



Collaboration

Working in partnerships
within LSE and externally



Highlights

Green Impact

The longest-running Green Impact programme in the world, the 2020/21 programme supported the dissemination of the School's Sustainability Strategic Plan following the previous years' #SustainableLSE Consultation theme.

18 teams of over 55 Green Impact leaders completed over 850 actions and reached over 400 staff members. 13 students and one alumnus also received IEMA recognised auditor training!

Reduce the Juice: Connect

Reduce the Juice: Connect ran a series of webinars covering energy, food, waste, fashion, water, COP26, and more online during 2020/21. The webinars and events saw over 300 LSE students attend and participate (15 per cent of the programmes total global audience) with the conversations on veganism and climate justice proving most popular with our audience.



Sustainable Projects Fund

Funded by a 10p tax on bottled water sales at LSE Catering outlets the Sustainable Projects Fund offers £20,000 annually for student and staff-led projects that enhance sustainability at LSE. This year the fund approved seven projects including:

- Fashion with a conscience: A Sustainable Fashion Show and documentary, raising awareness of the fashion industry as a key source of greenhouse gas emissions.
- The Great Plastic Divestment, a three-component project to reduce single-use plastics purchased at LSE, eliminate plastic litter on campus and improve waste data collection.
- Earthrise Journal is a student-led environmental community and platform, founded at LSE. It covers a variety of environmental and social justice issues using a range of student media and approaches.



Green Week

Coordinated by the LSESU Environment and Ethics Officer this year's Green Week explored Intersectional Environmentalism with LSESU societies, the School and partners delivering a combination of academic, activist, and social events. The events were attended by over 200 students with diverse and inclusive events creating wider engagement within the student body e.g. Queer Ecology with LSESU Pride Alliance.

Additional highlights include: the Earthrise seasonal journal launch party and beehive tour, opportunities to learn about environmentalism and racism as well as a direct-action workshop with Greenpeace, and an ice sculpture drawing attention to the urgency of the ecological crisis.

LSE Volunteer Centre

The School's Volunteer Centre helps students and staff find volunteering placements as well as one-off opportunities e.g. The Felix Project, Greenwich Ecology Park.

In 2021 environmental, conservation or animal related organisations were the 8th most popular type worked with. Students top three motivations for volunteering this year remained the same: improving things, giving back to society and personal values.

CASE STUDY

The Diana Award

This year five LSE students and alumni received a Princess Diana Award in recognition of their exceptional social action. One of these recipients is Palak Sharma, an MSc

International Social and Public Policy alum

(2020). Palak co-founded the "Green Governance Initiative", with an aim of influencing policy to make sure the 2030 Sustainable Development Goals (SDGs) are implemented at a grassroots level in India. Now based in New Delhi, she has trained thousands of young people to understand the SDGs and connected policymakers with young people to create real change.



THE
DIANA
AWARD

Next steps

- LSE Careers are developing a new programme to connect current students with alumni and professionals working in the field of sustainability.





Our School

Reaching net-zero carbon and reducing our direct environmental impacts



Carbon

Measure, reduce and mitigate our carbon emissions.



Energy

Operate a highly energy efficient estate and adopt renewable energy sources.



Waste and Resources

Reduce waste and adopt circular economy principles of resource management.



Buildings

Adopt the highest environmental standards in our construction and refurbishment projects.



Water

Reduce consumption on campus and residences.



Catering

Healthy and ethical food.



Responsible procurement

Embed sustainability in our supply chain.



Pollution and air-quality

Minimise pollution and improve air quality.



Travel

Reduce emissions associated with commuting and business travel.



Biodiversity and green spaces

Enhance biodiversity on the LSE estate by protecting and connecting habitats.

Visit our [webpage](#) for further details.



Carbon

Measure, reduce and mitigate
our carbon emissions



Highlights

- Our scope 1 and 2 carbon footprint has reduced by 44 per cent since 2005. LSE's 2020/21 carbon footprint for scope 1 and 2 emissions was 7,396 tonnes CO₂e. A measure of intensity, our carbon intensity was 32 kg CO₂e/m², a 60 per cent reduction since 2005/06.
- We worked with Mace to develop our **Carbon Reduction Strategy** that describes potential measures identified to deliver our net-zero carbon emissions by 2050 at the latest, and by 2030 for our energy use (scope 1 and 2) emissions, which the Estates Division and the School are now progressing with oversight and monitoring by the Sustainability Operations Group.
- We became the first UK-based carbon-neutral university for all emissions we currently measure (scope 1 and 2 for our energy use, and scope 3 for water, waste and business travel) for 2020/21 using carbon credits to mitigate the emissions we have not yet reduced or avoided.
- Our carbon credits form a biodiversity focused portfolio consisting of conservation and reforestation programmes in Kenya, Uganda, Peru, Indonesia and Timor-Leste. These credits were selected by the LSE community by popular vote from three tailored portfolios and were explored in detail at a workshop with our carbon offsetting partner, Compensate.

Next steps

- Obtain independent verification to the PAS 2060 international standard for carbon neutrality for the academic year 2020/21 for our measured emissions.
- We will develop a strategy to decarbonise the heat on our campus buildings in line with our Carbon Reduction Strategy.
- We will continue to use carbon credits to mitigate our current measured emissions.
- We will continue to work on our scope 3 emissions to better understand them.

Carbon Footprint 2020/21

Type of emissions

Emissions sources

Carbon emissions

Tonnes of carbon equivalent (tCO₂e)

Scope 1

Direct emissions from our activities



Gas and fuels
used to heat and operate our buildings

4,246 tCO₂e

Scope 2

Indirect emissions from our electricity use



Electricity
used for lighting, IT equipment, ventilation...

7 tCO₂e as our electricity is sourced from renewable sources

3,150 tCO₂e if using the UK electricity grid average carbon intensity factor

Scope 3

Indirect emissions associated with our activities and supply chain



Water consumed



Waste generated

- On campus
- Construction



Business travel

Air and rail booked through LSE central supplier

Water: 60 tCO₂e

Waste: 47 tCO₂e

Business travel: 45 tCO₂e

▲ Emissions measured

▼ Emissions not yet measured

Other business travel:
expenses, hotels, taxis



Staff/students travel

Commuting to campus



Goods and services

All things we purchase, including for construction projects



Photo: Rosie Coffey (LSE Volunteer Centre)



Energy

Operate a highly energy efficient estate
and adopt renewable energy sources



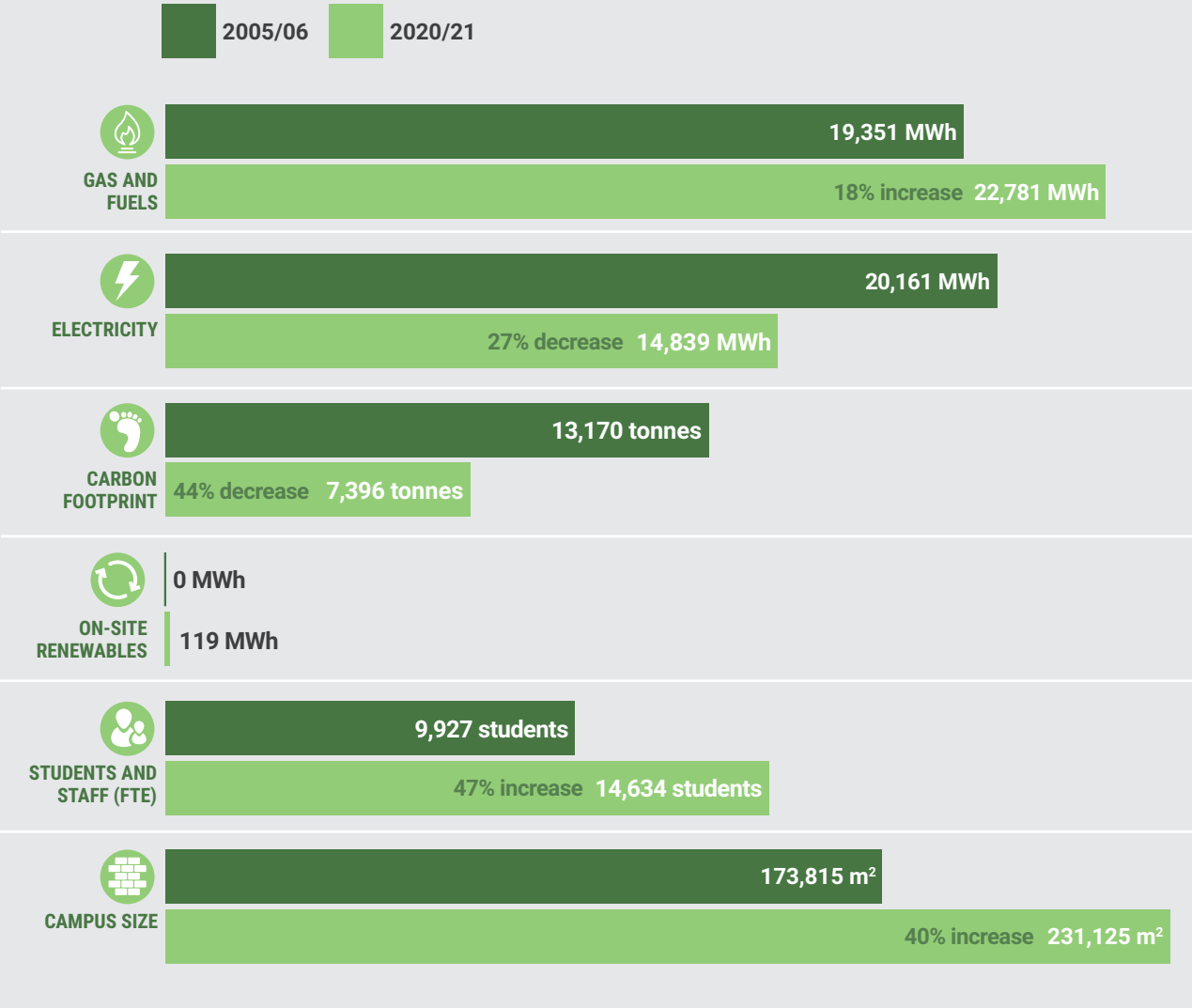
Highlights

- Our energy consumption for 2020/2021 was 37,620 MWh, which represents an 11 per cent increase from 2018/19 and a 5 percent reduction against our 2005/06 baseline. This increase against last year is due to the covid measures put in place to allow the reopening of our campus (including an increase in fresh air intake) as well as the cold winter in 2021.
- Our energy usage per m2 continued to improve, reaching 163 kWh/m2 in 2020/21, which is a 3 per cent reduction against 2019/20 and a 32 per cent reduction since 2005/06.
- In 2020/21, we produced over 119 MWh of electricity thanks to our photovoltaic panels. This is enough to power 20 Kingsway for a year. In addition, 100 per cent of the electricity we purchase is from renewable sources (e.g., solar and wind).
- Driving high energy efficiency standards continues to be a key aspect of how we conduct building refurbishments and design new buildings (**See Building section for details**).

Next steps

- Identify further opportunities for energy-efficiency measures.
- Develop a plan to decarbonise our heat.
- Improve estate efficiency to achieve 150kWh/m2 by 2025.

ENERGY USAGE (AND ASSOCIATED CARBON EMISSIONS) IN RELATION TO 2005/06 BASELINE YEAR





Waste and resources

Reduce waste and adopt circular economy principles of resource management



We apply the “Reduce, Reuse, Recycle, Recover” waste hierarchy in our waste and resource management. LSE’s total waste volume (excluding construction waste) in 2020/21 was 755 tonnes, of which 58.1 per cent was reused or recycled. Excluding a small fraction of construction waste (0.16 per cent), zero waste to landfill was achieved again this year. The campus closures and reduced numbers on campus have resulted in a reduction in waste production, 55 per cent less than 2018-2019.

LSE WASTE TONNAGE BY END DESTINATION (EXCL. CONSTRUCTION)



Case Study

Students research on Food and Plastic Waste

LSESU Sustainable Futures Society (SFS) published extensive reports on **food waste** and **single use plastic**. The teams are now working with LSE staff to implement some of the solutions that were found. For example, the halls are trialing technology to reduce the amount of food waste created and the LSE Shop has also introduced a range of reusable items to help staff and students use less plastic.



Highlights

- To help reduce the number of disposable coffee cups used on campus, we added a 25p charge.
- New signage was created for all the halls of residences to try to increase recycling rates.
- 4.4 tonnes of unwanted items were donated to the British Heart Foundation by LSE halls annual “ReLove” re-use programme for students moving out of halls, with a value to the charity of £8,071.

Next steps

- LSE’s Digital Smart campaign aims to embed some of the learnings of working from home to ensure our printing doesn’t return to pre-pandemic levels.
- Find solutions to improve the reuse of furniture and other items across LSE.



Buildings

Adopt the highest environmental standards
in our construction and refurbishment projects



Case Study: 35 Lincolns Inn Fields

Surveys and preparatory work are being undertaken to develop 35 Lincolns Inn Fields into an academic building for LSE. The sustainability team have provided:

- Initial early guidance in the form of a Sustainability Design Brief covering sustainability, energy and wellbeing that has been developed as part of a Proposed Design Competition.
- Input to analysis of Embodied and Operational Carbon Impacts received from consultants to highlight a preferred hierarchical series of scenarios and options to minimise carbon impacts of any future development. The existing inherited structure is complex, making reuse challenging depending on the final usage parameters. Both BREEAM and WELL standards are being considered having received consultants' reports.
- A one-page hierarchy of Sustainability Priorities with Passivhaus standards featuring prominently, as well as electrification and Net Zero carbon impact efforts. BREEAM, WELL and building design for End of Life (material passports and circular economy principles) were also incorporated.





Water

Reduce our water consumption on campus
and in Halls of Residence



Highlights

- In 2020/21 we consumed 143,511 m³ of water, a reduction of seven per cent compared to 2019/20, mainly due to campus closure.
- We continue to implement water efficiency measures. For example, we have been testing leak detection systems and we continue to replace taps with water-efficient ones.

Next steps

- Water consumption on campus reduced due to campus closure, however our lack of accurate water metering has proved a key barrier in analysing consumption and identifying savings. To address this, we are continuing with our efforts to install smart meters to support our water efficiency measures.





Catering

Healthy and ethical food



Catering Awards and Certifications

- LSE Catering are members of the Sustainable Restaurant Association, with the four catered halls, and three main restaurants having achieved a three-star rating.
- All four catered halls of residence have attained the Soil Association Silver Award whilst the LSE Garrick and Shaw Café have achieved a Bronze Award.

Highlights

- A new separate Catering Environmental Working Group was formed with members from the sustainability team, catering team, students, SU societies and academic researchers.
- Revised the Catering Action Plan to increase its impact.
- Investigating the implementation of Winnow AI food waste monitoring and measurement system to obtain robust data to tackle food waste at source.
- Catering continued to work with the LSESU, societies and academic researchers in behavioural science to increase and nudge the uptake of plant-based dishes.

Next steps

- Developing new plant-based options and reusable water bottle posters for the campus catering units and catered halls.
- Instigate Winnow AI system in Bankside Hall to reduce food waste.
- Introduction of a carbon labelling scheme.
- Implement an increase in the water bottle levy to 25p.
- Implement enhanced communications for sustainable catering.
- Retain and enhance where possible the Sustainable Restaurant Association and Food for Life certifications across the campus and halls of residence.





Responsible procurement

Make sustainability a key consideration of our purchasing decisions and supplier relationships



Highlights

- The Director of Procurement wrote to all suppliers in March 2021, urging them to ramp up their sustainability efforts as they plan for a post-COVID world. The letter also explicitly outlined how sustainability considerations will become an increasingly important aspect of the School's relationship with suppliers.
- Sustainability was embedded in the requirements and scoring criteria of the following contracts which were being tendered this year:
 - Halls laundry services
 - Grounds maintenance
 - Building maintenance
 - Courier services
 - Office and cleaning supplies
 - Furniture contract
- The School adopted the NETpositive Supplier Engagement Tool to help suppliers adopt action plans for sustainability as well as a broader range of responsible business practices such as diversity and inclusion or modern slavery.
- Sustainability was the focus of a session for the procurement team away day, and an opportunity to reflect how sustainability considerations could be further embedded in the School's procurement processes.

Next steps

- Sustainability is a key theme of a new *Supplier Code of Practice* being developed by the School to engage suppliers on important areas of focus and minimum expected requirements.



Pollution and air quality

Minimise pollution and improve air quality and supplier relationships



Highlights

- LSE is actively engaged with a new working group formed by Westminster City Council focusing on the Strand Aldwych sustainability aspects of the public realm improvements.
- LSE engaged with Kings College London academics to install additional air quality and noise sensors at three LSE sites as part of the European funded Horizon 2020 ReSET project.

Next steps

- We will continue to collaborate with academics and innovative solutions to monitor and mitigate air pollution where possible; and integrate this with academic research outputs.
- Review information provided on the LSE sustainability webpages for Air Quality in relation to best current individual and collective advice and action.





Travel

Reduce emissions associated with commuting and business travel



Highlights

Commute to campus

- Following collaboration between the Estates Division and the LSE Bicycle User Group, cycle parking spaces on campus were increased from 538 in 2018/19, to 677 in 2019/20, and 785 in 2020/21, a 46 per cent increase over the last two years.
- LSE staff continued to benefit from the Cycle-to-Work scheme, which saves buyers up to 30 per cent on the purchase of a bike.
- The LSE Sustainability Team collaborates with the Northbank Business Improvement District Corporate Social Responsibility Steering Group, which included work to increase cycle parking and facilities in our local area.



Business travel

In 2018-19 LSE staff conducted close to 7,000 air and rail journeys, making for 2.5 million kilometres and 4,195 tonnes of carbon. Over 98 per cent of these emissions were linked to air travel.

Travel restrictions brought by the pandemic triggered a dramatic 98 per cent drop in air and rail business travel and associated carbon emissions in 2020/21. Staff quickly adopted alternative ways of collaborating online, building new skills, and getting familiar with new ways of working.

Whilst we recognise travel is sometimes necessary for an institution with global outreach, we are keen to maintain some of the new ways of working adopted during the pandemic and encourage more online collaboration, including online and hybrid events.

Benefits of digital collaboration and events include broadening accessibility and participation (e.g. to peer institutions for which travel costs can be prohibitive), the ability to connect with a broader international audience, and to convene a more diverse set of perspectives and inputs (e.g. speakers at online conferences).

This year we developed our **Digital Smart LSE** campaign which will be a key area of focus in 2021/22, to continue making the most of digital solutions to reduce our reliance on business travel as part of delivering our net-zero carbon targets. The campaign provides tools and resources to encourage staff to attend and organise meetings and events online rather than travelling.

We put into place a process for all air and rail travel booked by departments to include the purchase of carbon credits to mitigate carbon emissions, as part of LSE becoming a carbon neutral university.

Next steps

- Our free Dr Bike maintenance events for students and staff in 2021/22.
- Our plans to develop a new travel plan for the campus were put on hold during the pandemic. It is planned for completion in 2021/22.



Biodiversity and green spaces

Enhance biodiversity on the LSE estate by protecting and connecting habitats



Highlights

- Centre Building roof terraces continue to mature and are providing wellbeing spaces and food sources for the LSE Bees and other local pollinators.
- The Centre Building student square is fully open and tree lined, with the relocated portacabin green wall as a backdrop.
- LSE Bees three active hives produced 60 jars of honey.
- The School's maintenance team are collecting reused wood to build new planters for fruit trees during 2022 to compliment the LSE Bees.
- LSE joined the Hedgehog Friendly Campus campaign and is working towards achieving the Bronze Level award.

Next steps

- Marshall Building completion will add new roof terraces to our biodiversity corridor.
- LSE Bees to develop and strengthen with two new hives and input from the LSESU Beekeeping Society.
- Achieve the Bronze Level award for the Hedgehog Friendly Campus campaign.





Sustainability Awards

This year's awards were presented at the School's 11th Celebration of Sustainability by LSE's Director.

Sustainability Award Winners



Education

Pik Liew (staff)
Ilia Ioannidi (student)



Research

Amanda Burgess (staff)
Alice Rigo Saitta and
Farzeen Shaffik (students)



Engagement and Leadership

Karen Agate-Hilton,
Lisa Kosky (staff)
Arthur Krön and Ilia Ioannidi
(students)



Investment

Jenny Febry (staff)
Ellie Cottrell (student)



Collaboration

Erica Pani (staff)
Dimitra Stratopoulou,
Oliver Kumar (students)



Our School

Dene Donkin (staff)
Kitty Rae Thompson (student)

nus

green impact

Green Impact

Bethan Wilson,
Julia Karolkiewicz,
Keri Rowsell,
Stefani Tasheva

Green Impact Results

Platinum:

Centre Building Catering Team, Estates,
LSE100, LSE Careers, Marshall Institute,
Student Marketing and Recruitment

Gold:

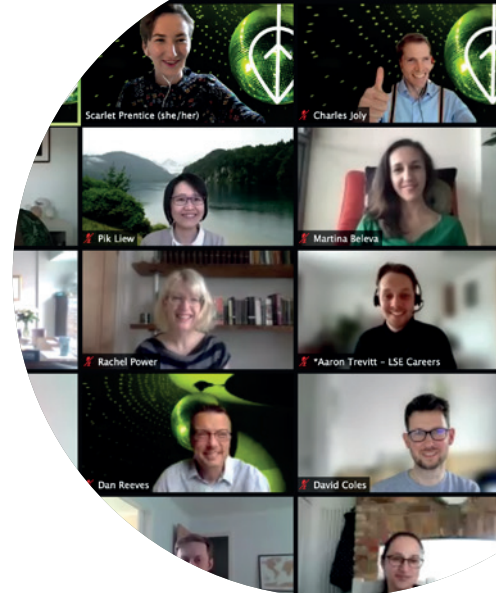
High Holborn Hall, Northumberland
House, Passfield Hall, Carr-Saunders,
Management, Finance Division,
Human Resources

Silver:

Health Policy, Rosebery Hall

Bronze:

Butler's Wharf Residence, Sociology,
Media and Communications



Continue the conversation...

lse.ac.uk/sustainableLSE

sustainability.team@lse.ac.uk



Help LSE maximise its impact in
shaping a sustainable world by donating
to the [Sustainability Impact Fund](#).

Sustainability Team, Estates Division
The London School of Economics
and Political Science
Houghton Street
London WC2A 2AE

Estates reception: 020 7955 6477

This information can be made available in alternative formats,
on request. Please contact, sustainability.team@lse.ac.uk

The London School of Economics and Political Science is a School of the University of London. It is a charity
and is incorporated in England as a company limited by guarantee under the Companies Acts (Reg no 70527).

The School seeks to ensure that people are treated equitably, regardless of age, disability, race, nationality,
ethnic or national origin, gender, religion, sexual orientation or personal circumstances.

Design: LSE Design Unit (lse.ac.uk/designunit)

Photography: Rosie Coffey, Ellie Cottrell, Maria Moore, Nigel Stead